



ALEXANDRIA®

*Building the Future of Life-Changing Innovation®*

# PURPOSE-BUILT LIFE SCIENCE SPACES

AVAILABLE FOR LEASE IN  
THE GREATER MONTREAL AREA





## A LEADER IN COLLABORATIVE LIFE SCIENCE CAMPUSES

Over the last 28 years, Alexandria has established itself as the leading owner, operator, and developer of collaborative campuses for life science, agtech, and technology companies in North America's top innovation clusters.

**Alexandria's cluster model unites cutting-edge science and technology with leading scientific and managerial talent and strategic investment capital in best-in-class locations immediately adjacent to top academic institutions.**

**Their mission is to create and grow life science ecosystems and clusters that ignite and accelerate the world's leading innovators in their noble pursuit to advance human health.**

Strategically located between the Nexus 40-13 Park in Saint-Laurent and Cite de la Biotech in Laval, Alexandria is offering six prestigious assets that provide 153,000 square feet of turnkey, purpose-built life science space for lease. These assets are readied to the specific requirements and high standards of modern life science users, so that tenants can begin creating their best work and continue to be pioneers in their respective fields.



# NEXUS 40-13 PARK

Located in Saint-Laurent, Nexus 40-13 is a premier business park which offers a spacious campus setting within 25 minutes of downtown Montreal and is adjacent to the Montréal-Pierre-Elliott-Trudeau International Airport. The campus extends along the intersection of highways 40 and 13 and is surrounded by a deep talent pool from of the West Island and Laval.

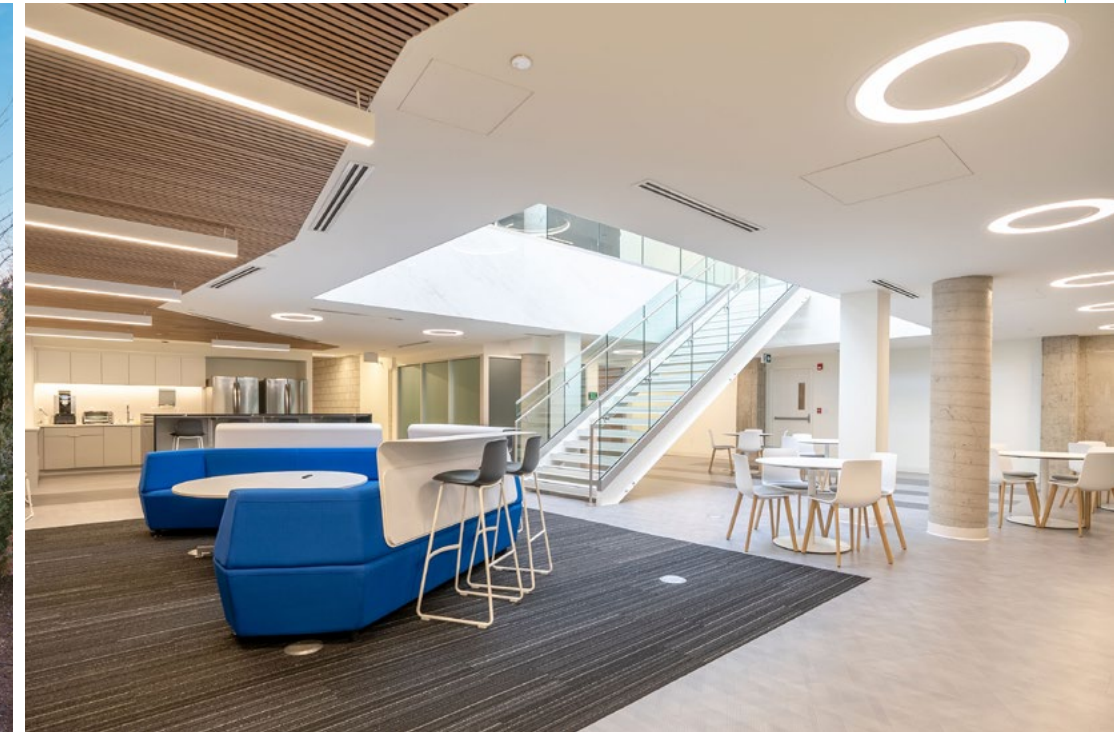


AT THE  
INTERSECTION  
OF HIGHWAYS  
40 & 13.  
25 MINS FROM  
DOWNTOWN  
MONTREAL.



# CITÉ DE LA BIOTECH

Located in Laval, Cite de la Biotech is the biotechnology and life sciences hub of greater Montreal. The Biotech city is home to world renowned pharmaceutical firms and research institutes (INRS) which employ more than 5,000 individuals in the fields of bio-pharmaceutical, medical device, CRO, and IT. The Biotech City is home to the INRS research institutes, the CQIB incubator and Alexandria currently owns and manages six individual assets that provides turnkey, purpose-built life science space for rent, and land for development. Located between Highway 15 and Road 117, in close proximity to the metro Montmorency and the bike path.



# MEET THE BUILDINGS

Market leading assets, purpose-built for life sciences



## 8851 Transcanadienne

Offering 53,000 sq. ft. over two floors

Availability Signature + 12 months

[FOR MORE INFORMATION](#)



## 201 Armand-Frappier

Offering 40,679 sq. ft. over 3 floors

Availability Q2 2024

[FOR MORE INFORMATION](#)



## 4777 Levy

Offering 2,957 - 28,426 sq. ft. over two floors

Availability Q3 2024

[FOR MORE INFORMATION](#)



## 235 Armand-Frappier

Offering 8,172 sq. ft.

Availability Q2 2024

[FOR MORE INFORMATION](#)



## 4800 Levy

Offering 5,522 sq. ft. first floor

Availability Q2 2024

[FOR MORE INFORMATION](#)



## 275 Armand-Frappier

Offering - 13,664 sq. ft. of shared space  
- 48,471 sq. ft.

Availability - Q4 2024  
- Q1 2025

[FOR MORE INFORMATION](#)



## 4868 Levy

Offering 5,099 - 30,806 sq. ft. over two floors

Availability Q2 2024

[FOR MORE INFORMATION](#)

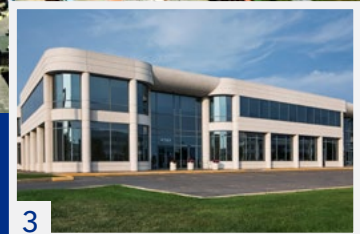
## THE HIGHEST STANDARDS IN LIFE SCIENCES SPACE

Purpose-built by Alexandria, the life-science spaces at Nexus 40-13 Park and Cite de la Biotech campuses are designed specifically for life science tenants. Their expertly designed lab spaces feature product-specific requirements including redundant emergency power systems, higher floor-to-floor heights, higher floor load capacity, sufficient vibration capacity, superior HVAC systems and planned vertical MEP expansion.





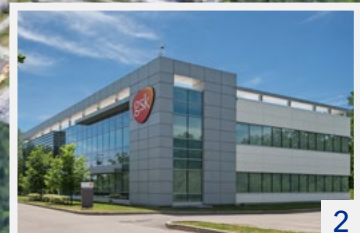
7300, rue Transcanada



# NEXUS 40-13 PARK

## SAINT-LAURENT

465,700 SQ. FT.



# CITÉ DE LA BIOTECH

## LAVAL

488,400 SQ. FT.

# How can we help?

## Contact our team to learn more about your future life science space

### Erica Deschênes

Vice President

+1 514 375 0238

[erica.deschenes@cbre.com](mailto:erica.deschenes@cbre.com)

Real Estate Broker

### Eugenia Olshevskaya

Transactions Manager

+1 514 375 2506

[eugenia.olshevskaya@cbre.com](mailto:eugenia.olshevskaya@cbre.com)

Commercial Real Estate Broker

#### CBRE Limited, Real Estate Agency

1250 René-Lévesque Boulevard West, Suite 2800, Montréal, Québec H3B 4W8

T +1 514 849 6000 | [www.cbre.ca](http://www.cbre.ca)



This disclaimer shall apply to CBRE Limited, Real Estate Agency, and to all other divisions of the Corporation; to include all employees and independent contractors ("CBRE"). The information set out herein, including, without limitation, any projections, images, opinions, assumptions and estimates obtained from third parties (the "Information") has not been verified by CBRE, and CBRE does not represent, warrant or guarantee the accuracy, correctness and completeness of the Information. CBRE does not accept or assume any responsibility or liability, direct or consequential, for the Information or the recipient's reliance upon the Information. The recipient of the Information should take such steps as the recipient may deem necessary to verify the Information prior to placing any reliance upon the Information. The Information may change and any property described in the Information may be withdrawn from the market at any time without notice or obligation to the recipient from CBRE. CBRE and the CBRE logo are the service marks of CBRE Limited and/or its affiliated or related companies in other countries. All other marks displayed on this document are the property of their respective owners. All Rights Reserved. Mapping Sources: Canadian Mapping Services [canadamapping@cbre.com](mailto:canadamapping@cbre.com); DMTI Spatial, Environics Analytics, Microsoft Bing, Google Earth.