

**AVISON
YOUNG**

8806/08/10 - 51 Ave

Edmonton, AB

Industrial Property for Lease



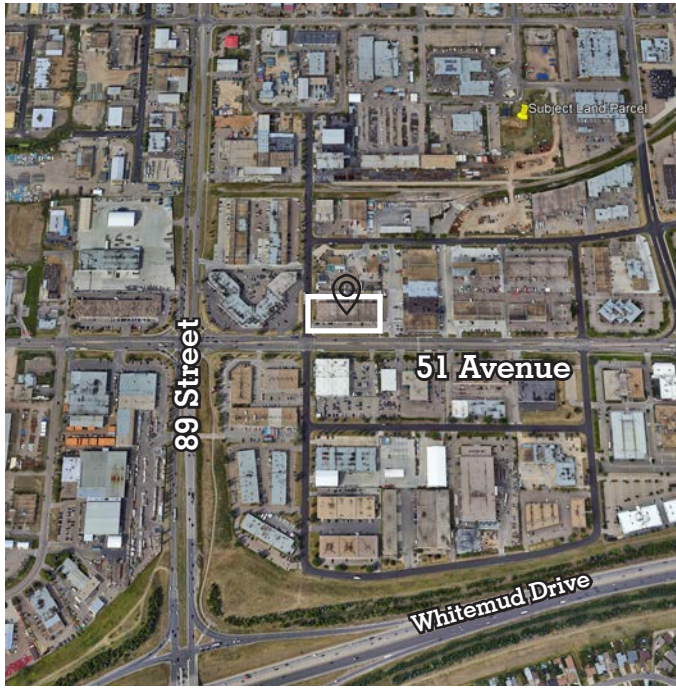
**Get more
information**

David St. Cyr
Principal
+1 780 964 4601
david.stcyr@avisonyoung.com

Bryce Williamson
Principal
+1 587 984 6199
bryce.williamson@avisonyoung.com

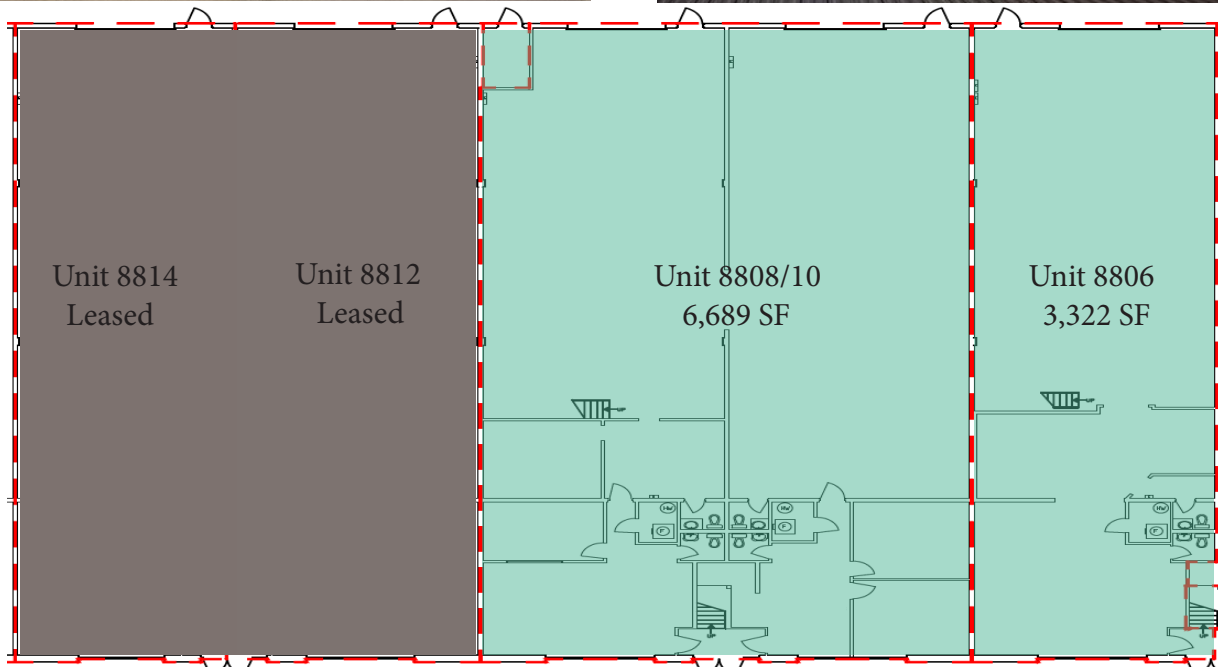
Katherine Koebel
Client Services
+1 587 315 0891
katherine.koebel@avisonyoung.com

avisonyoung.com



Offering Summary

Municipal Address:	8806/08/10 - 51 Ave
Available:	Immediately
Zoning:	BE - Business Employment Zone
Area Available:	3,322 - 10,011 SF
Loading:	Grade (3 - 12' x 14')
Ceiling Height	20' Clear
Power:	100 amp, 120/208 volt, 3 phase (per bay)
Operating Costs:	\$5.14/SF (2024)
Lease Rate:	\$11.00/SF



**Get more
information**

David St. Cyr
Principal
+1 780 964 4601
david.stcyr@avisonyoung.com

Bryce Williamson
Principal
+1 587 984 6199
bryce.williamson@avisonyoung.com

Katherine Koebel
Client Services Coordinator
+1 587 315 0891
katherine.koebel@avisonyoung.com

**AVISON
YOUNG**