



OFFICE SPACE FOR LEASE

6

ANTARES DR
OTTAWA, ONTARIO


INSIDE EDGE
PROPERTIES
BROKERAGE

FOR INQUIRIES, PLEASE CONTACT:
LEASING@IEPROPERTIES.COM
613.226.9902



INSIDE EDGE
PROPERTIES
BROKERAGE

6 ANTARES DR, PHASE II – SUITE 100



4,824 SQ.FT.

OFFICE SPACE FOR LEASE

BASIC RENT	\$14.00 PSF
ADDITIONAL RENT	\$18.02 PSF (2024 ESTIMATE)
ADDITIONAL COSTS	UTILITIES & IN-SUITE JANITORIAL
AVAILABILITY	IMMEDIATE
PARKING	3/1000



ON-SITE
FITNESS
STUDIO



TURN
KEY
OFFICE



BUILDING
SIGNAGE RIGHTS
AVAILABLE



MINUTES
TO
AIRPORT



ON-SITE
DELI



VEHICULAR
TRAFFIC
35,000/DAY

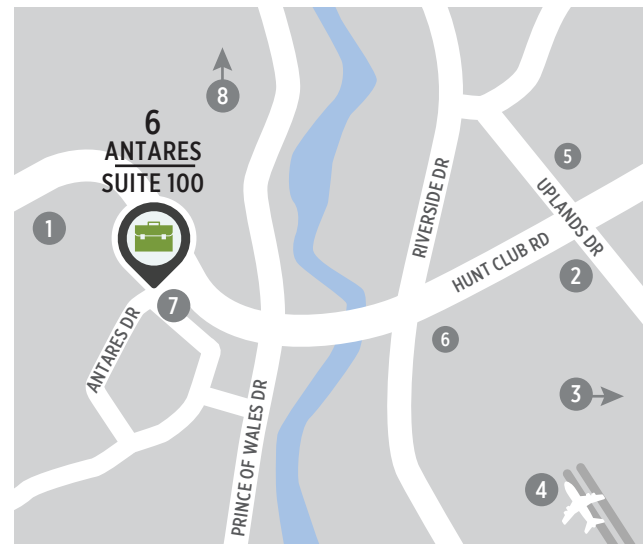


CLOSE TO
PUBLIC
TRANSIT

WELL-LOCATED, MODERN OFFICE SPACE

6 Antares Drive is situated in an amenity-rich location just steps from public transportation and minutes from a variety of shops, restaurants and the Ottawa International Airport. Conveniently located at the corner of Hunt Club Road and Antares Drive, this highly visible building also offers superior signage opportunities in the well-established Rideau Heights Business Park.

LOCATION



POINTS OF INTEREST

- 1 Restaurants, Retail, Hotel
- 2 Event Space - Infinity Convention Centre
- 3 Event Space - EY Centre
- 4 Ottawa International Airport
- 5 Ottawa Hunt and Golf Club
- 6 Restaurants and Retail
- 7 OC Transpo Bus Stop
- 8 Downtown Ottawa (20 min drive)



FOR INQUIRIES, PLEASE CONTACT:
LEASING@IEPROPERTIES.COM
613.226.9902

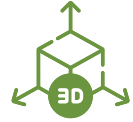


INSIDE EDGE
PROPERTIES
BROKERAGE



6 ANTARES DR, PHASE II - SUITE 100

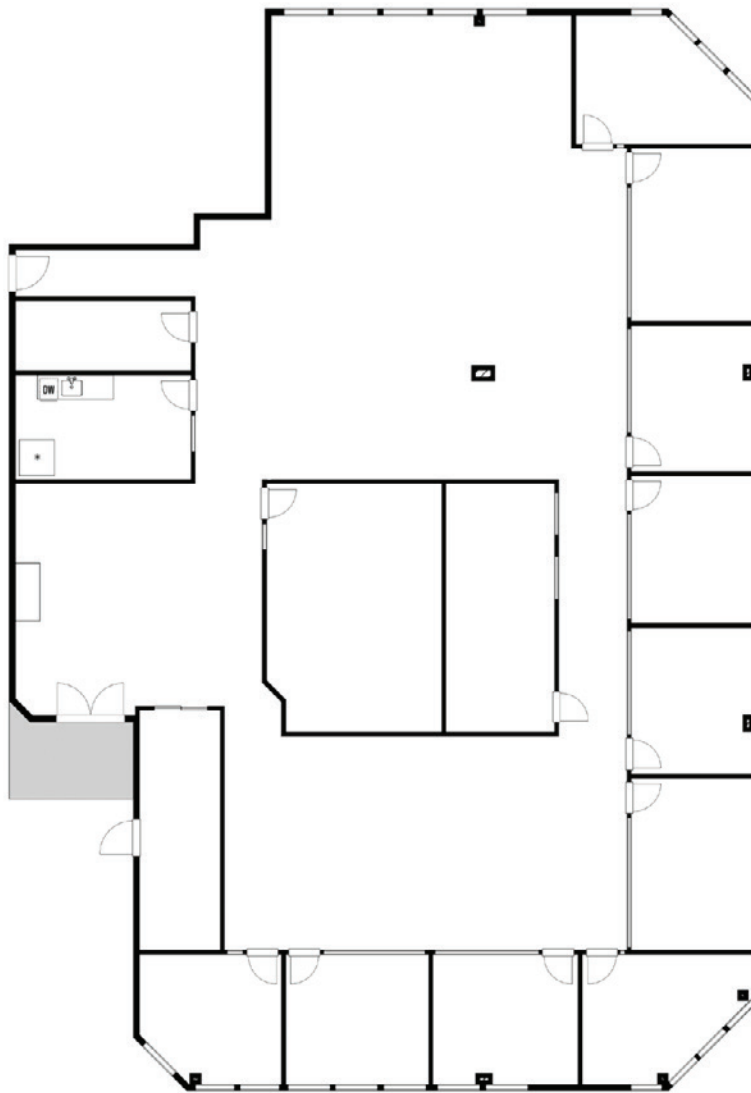
FLOORPLAN



[CLICK TO VIEW VR TOUR](#)

PHASE II - SUITE 100

4,824 SQ. FT.
AVAILABILITY IMMEDIATE

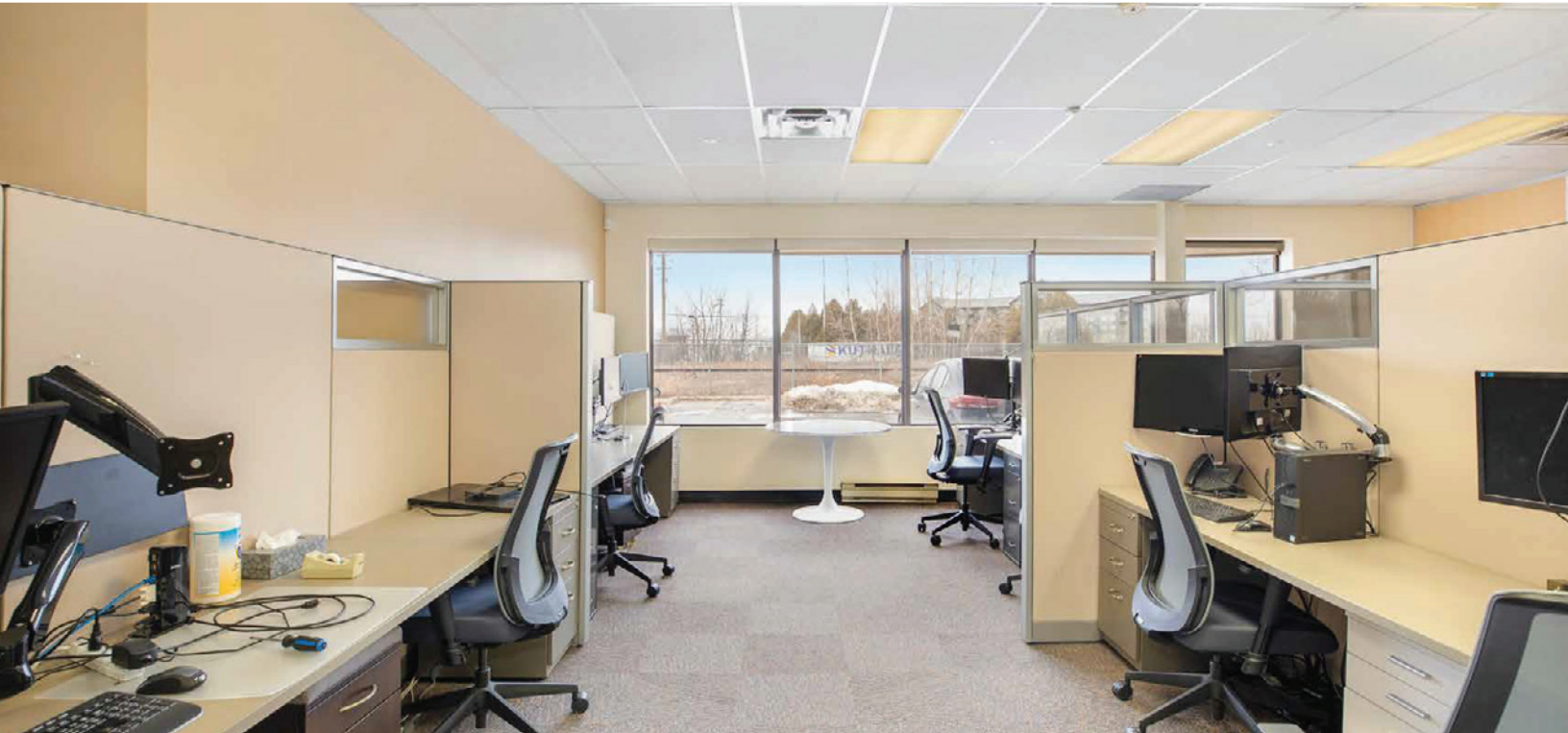


FOR INQUIRIES, PLEASE CONTACT:
LEASING@IEPROPERTIES.COM
613.226.9902



INSIDE EDGE
PROPERTIES
BROKERAGE

6 ANTARES DR, PHASE II - SUITE 100



FOR INQUIRIES, PLEASE CONTACT:
LEASING@IEPROPERTIES.COM
613.226.9902




INSIDE EDGE
PROPERTIES
BROKERAGE

6 ANTARES DR, PHASE II – SUITE 100



NEARBY AMENITIES



FOR INQUIRIES, PLEASE CONTACT:
LEASING@IEPROPERTIES.COM
613.226.9902