

Mayfield Business Centre

Turnkey Office Space

10525 - 170 Street
Edmonton, AB

Great Exposure and Access via 170th Street



Mayfield Business Centre

10525 - 170 Street | Edmonton, AB



The Opportunity

Professional managed building with great exposure & access

Professionally managed 4 storey business centre with convenient access to major roadways including Anthony Henday Drive and Yellowhead Trail, as well as public transit.

This is the perfect location for companies that are seeking easy access to any part of Edmonton.

The property has excellent visibility and exposure to 170th Street, free surface parking and is well positioned close to retail, hotels, restaurants, conference centers, printing facilities and other conveniences to make your business run even smoother; this is a premium location.



Professionally managed building



Excellent access to major roadways and public transit



Exposure to 170th Street



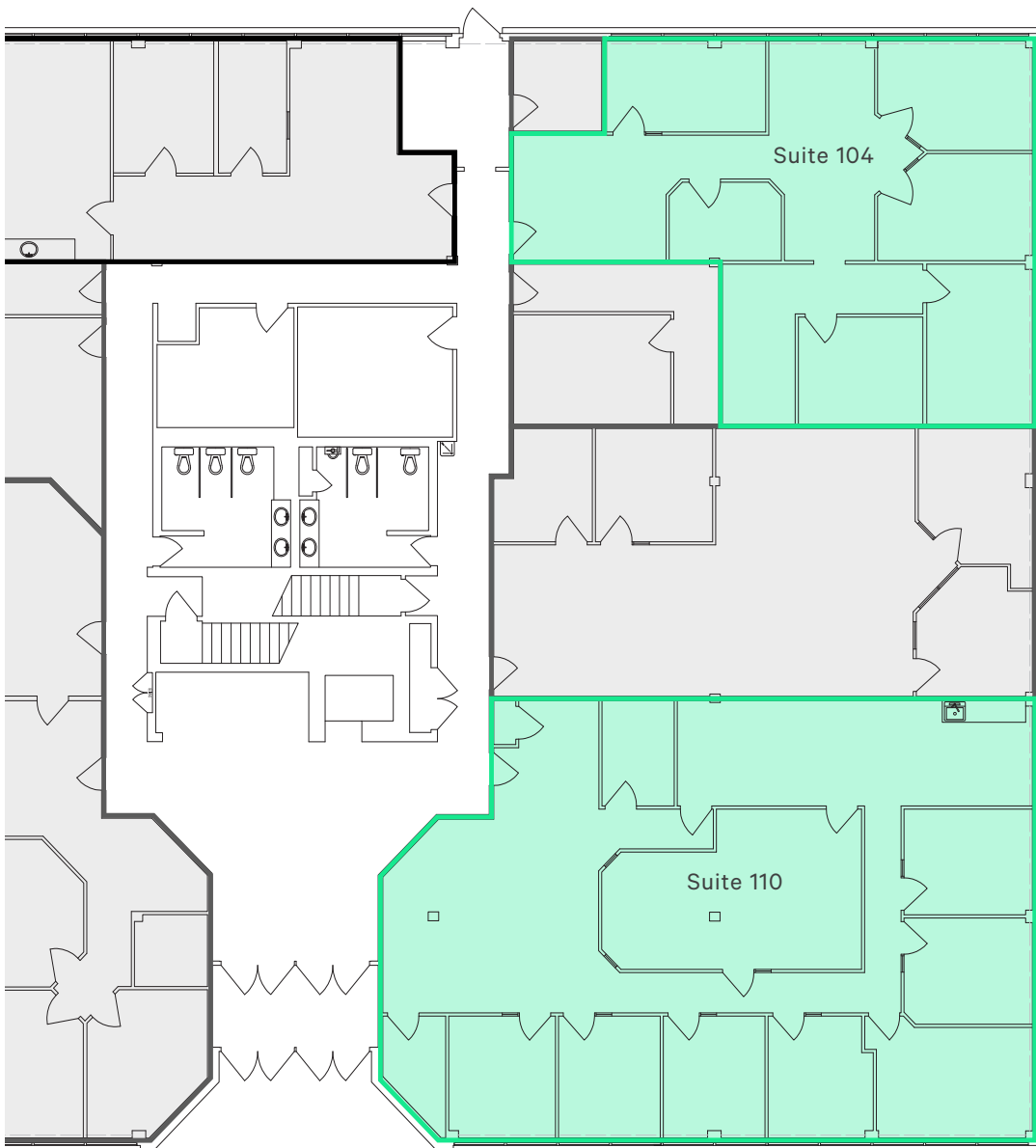
Free surface parking



Convenient proximity to shopping, hotels, restaurants & more

Lease & Building Details

Lease Rate	\$8.00 - \$10.00 / sq. ft.
Operating Costs (2023)	\$15.36 / sq. ft.
Parking	2.25 stalls / 1,000 sq. ft.
Parking Rates	No charge
Fibre Internet	Yes
Building Hours	6:00 am - 8:00 pm (Mon-Fri) 7:00 am - 5:00 pm (Sat)



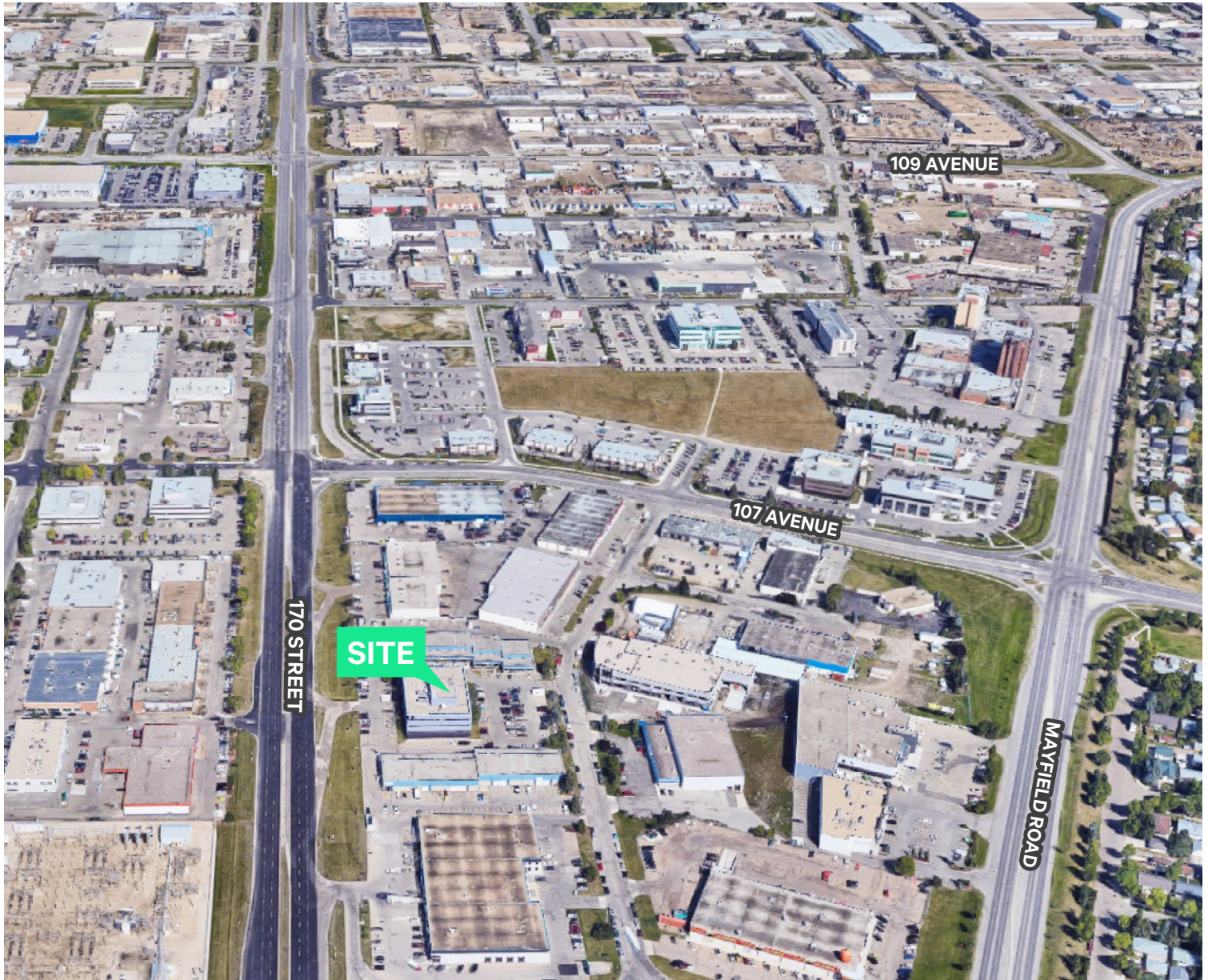
Main Floor

SUITE 104

1,590 sq. ft.

SUITE 110

2,711 sq. ft.



Contact Us

Mark Anderson

Vice President
+1 780 229 4652
mark.anderson2@cbre.com

Ryan O'Shaughnessy

Senior Associate
+1 780 229 4686
ryan.oshaughnessy@cbre.com

Matteo Marocco

Sales Associate
+1 780 229 4691
matteo.marocco@cbre.com

This disclaimer shall apply to CBRE Limited, and to all divisions of the Corporation ("CBRE"). The information set out herein (the "Information") has not been verified by CBRE, and CBRE does not represent, warrant or guarantee the accuracy, correctness and completeness of the Information. CBRE does not accept or assume any responsibility or liability, direct or consequential, for the Information or the recipient's reliance upon the Information. The recipient of the Information should take such steps as the recipient may deem necessary to verify the Information prior to placing any reliance upon the Information. The Information may change and any property described in the Information may be withdrawn from the market at any time without notice or obligation to the recipient from CBRE.