

# 1801



**PARTNERS GLOBAL**  
CORPORATE REAL ESTATE

**FOR LEASE**

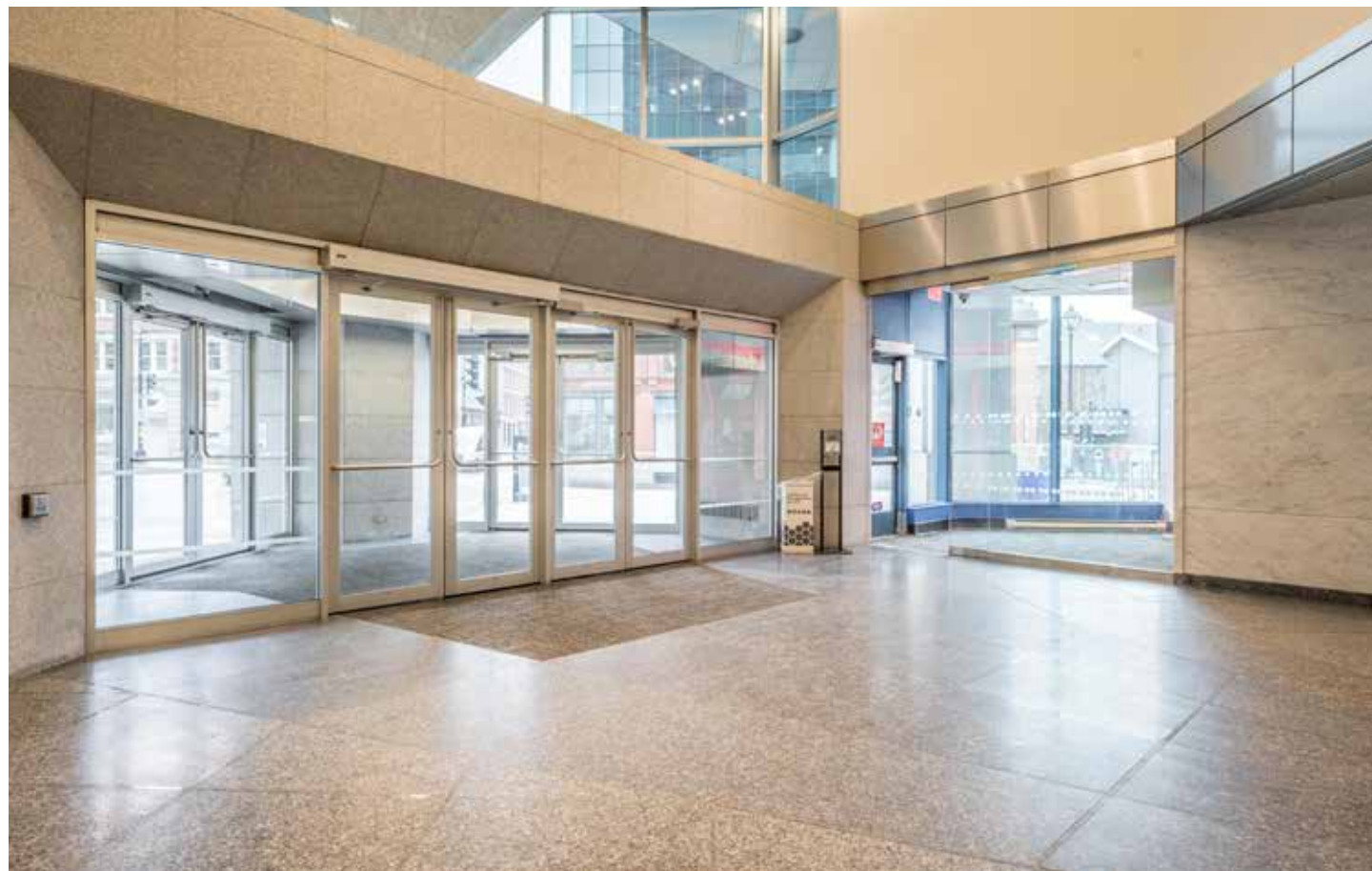


**Geof Ralph** | (902) 877-9324 | [geof@partnersglobal.com](mailto:geof@partnersglobal.com)



# TOP OF CLASS WORKPLACE

One of Halifax's most recognizable buildings, 1801 Hollis features contemporary, modern finishes throughout, with floor-to-ceiling glass, column-free floor plates, and five high-speed elevators. Large windows provide panoramic views of the Halifax skyline, cityscape, and harbour, while the building offers flexible suite sizes, including full-floor opportunities, with turnkey spaces or customizable raw layouts to suit any tenant's needs.



## Building Details

Address	1801 Hollis Street
Location	Downtown Halifax
Size	223,213 sq. ft.
Size Available	1,769 to 10,717 sq. ft.
Property Type	Office
Class	A
Year Built	1975
Floors	22
Net Rent	BY NEGOTIATION
Additional Rent	\$18.94 PSF

## Features

- Dedicated underground parking & EV chargers (currently sold out)
- Bike storage
- Five (5) high-speed elevators
- On-site restaurant and catering
- On-site property management
- Secure building with 24/7 access
- 9' floor-to-ceiling and 12' 6" slab-to-slab
- Shared kitchenette and boardroom



# HALIFAX'S BUSINESS STARTS AT 1801

Located in the heart of Halifax's business district, 1801 Hollis puts you steps from world-class dining, shopping, the waterfront boardwalk, and more. With immediate access to multiple cafés, bars, restaurants, hotels, and fitness options within a 100m radius, the building offers everything your team needs to work, meet, and entertain. The convenience is unmatched - a true walker's paradise with excellent connectivity.

Amenities within 250m radius:

91

WALK SCORE

75

TRANSIT SCORE

9+

HOTELS

4+

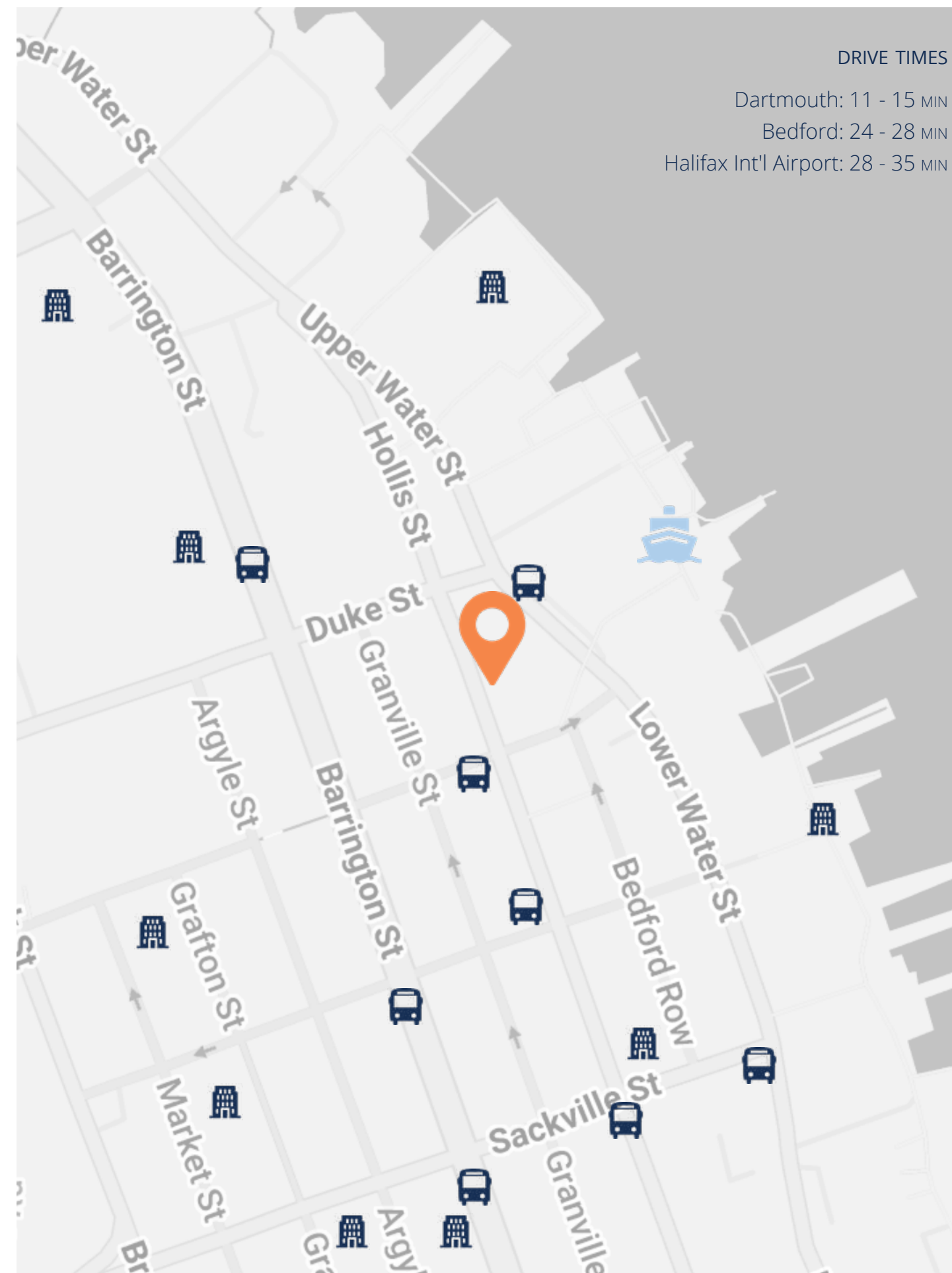
FITNESS CENTRES

30+

BARS & RESTAURANTS

40+

RETAIL & SERVICES



DRIVE TIMES

Dartmouth: 11 - 15 MIN

Bedford: 24 - 28 MIN

Halifax Int'l Airport: 28 - 35 MIN



# TENANT DIRECTORY

- Canadian Environmental Assessment Agency
- Cobequid Realty Inc.
- Atlantic Canada Opportunity Agency
- Justice Canada
- Nova Scotia College of Pharmacy
- Group MACH Inc.
- Northbridge Financial Corporation
- BOMGAR Canada Limited
- OMG Insurance Services Inc.
- Parsons Inc.
- Mercer Ltd.
- MD&C Law Limited Partnership
- MNP LTD.
- East Coast School of Language
- Arctic Economic
- Tupman & Bloom LLP
- Eastpoint Engineering
- Federal Court of Canada
- Brurchell Wickwire Bryson LLP
- Patterson Law
- Janes Next Door

## LEASING AVAILABILITY

Floor	Suite	Size	Available
Ground Floor	Suite 100	6,882 sq. ft.	60 days notice
2 <sup>nd</sup> Floor	Suite 225	2,017 sq. ft.	Immediately
8 <sup>th</sup> Floor	Suite 810	2,083 sq. ft.	Immediately
9 <sup>th</sup> Floor	Suite 910	2,658 sq. ft.	December 1, 2026
14 <sup>th</sup> Floor	Suite 1400	1,769 sq. ft.	Immediately
17 <sup>th</sup> Floor	Suite 1700	10,717 sq. ft.	Immediately

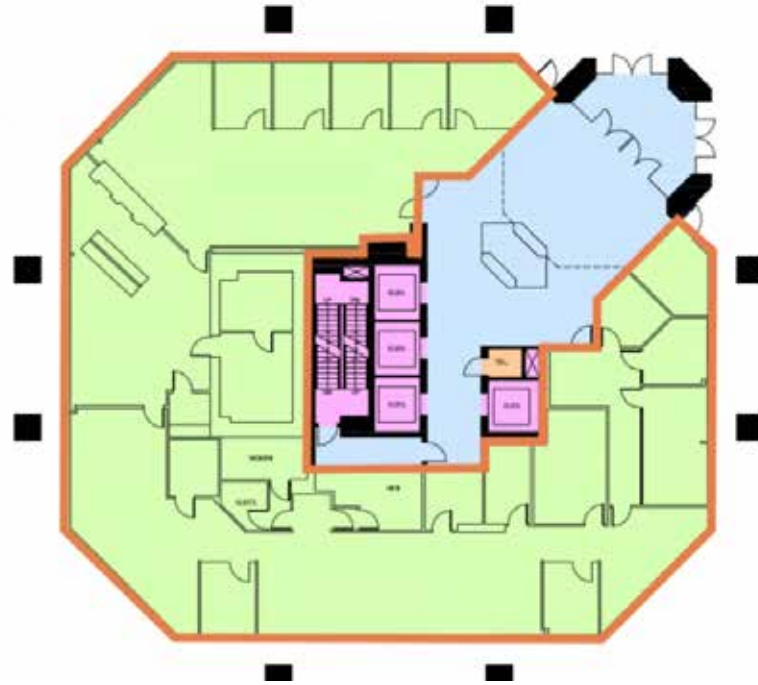


SHARED BOARDROOM

# SUITE 100

6,882 sq. ft.  
Available with 60 day notice

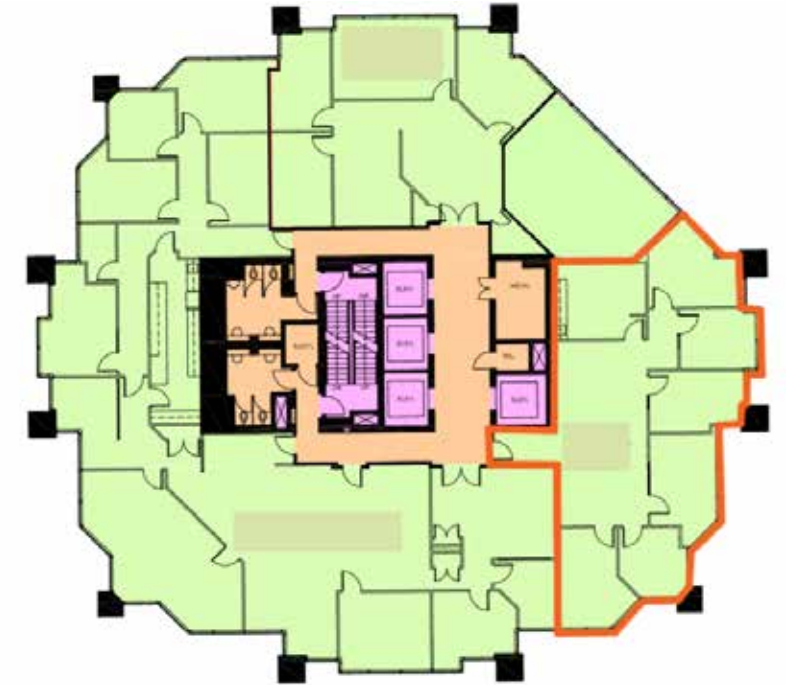
- Move-in ready space
- Former financial institution
- High ceilings and expansive windows
- Reception
- Private offices
- Collaboration work area
- Kitchenette
- Two interior washrooms
- Direct access off main lobby



# SUITE 225

2,017 sq. ft.  
Available now

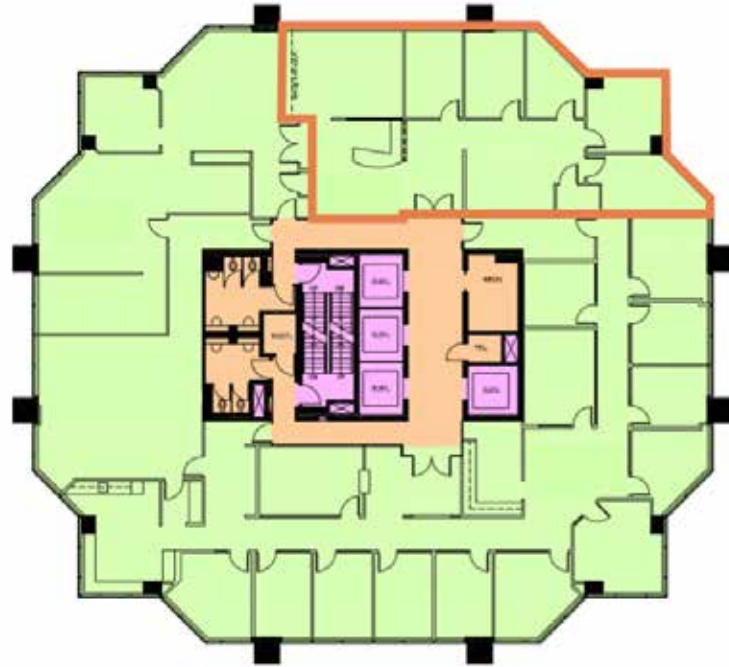
- Move-in ready space
- Six (6) private offices
- Open reception area
- Collaboration work area
- Large kitchen



# SUITE 810

2,083 sq. ft.  
Available now

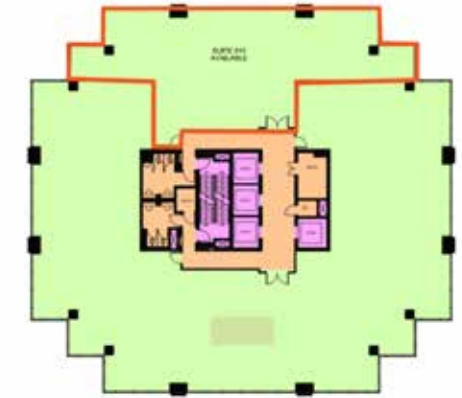
- Move-in ready space
- Modern blinds and finishes
- Eight (8) private offices
- Two collaborative work areas
- Large boardroom
- Kitchenette



# SUITE 910

6,658 sq. ft.  
Available December 1, 2026

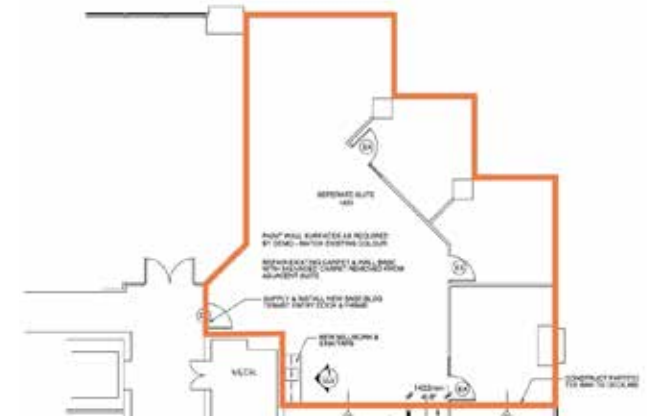
- Move-in ready space
- Open work area
- Views of Halifax Harbour & cityscape



# SUITE 1400

1,769 sq. ft.  
Available now

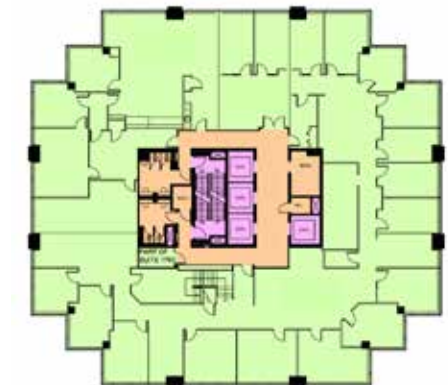
- Move-in ready space
- Quality leaseholds
- Perimeter offices
- Collaborative work areas
- Views of Halifax Harbour & cityscape



# SUITE 1700

10,717 sq. ft.  
Available now

- Full floor opportunity
- Sophisticated space
- Views of Halifax Harbour & cityscape





**Geof Ralph** | (902) 877-9324 | [geof@partnersglobal.com](mailto:geof@partnersglobal.com)

[partnersglobal.com](https://partnersglobal.com)

Partners Global Corporate Real Estate (Partners Global) and its agents and affiliates do not warrant, represent or guarantee the accuracy, completeness or validity of the information provided herein. Parties interested in the property are to conduct their own independent investigations to determine the suitability of the property for their intended use and are strongly urged to discuss the property with their professional advisors. Partners Global expressly disclaims any liability arising out of any errors and omissions in the information. Prospective clients should not confine themselves to the contents but should make their own enquiries to satisfy themselves in all respects. Partners Global will not accept any responsibility should any details prove to be incomplete or incorrect.