



850 Harbourside Drive North Vancouver, BC

Property summary

AVAILABLE AREAS

Unit	Size (sf)	Availability
312	984	June 1, 2024

ASKING RENTAL RATE

\$28.00 psf NNN

ADDITIONAL RENT (2024 ESTIMATE)

\$14.05 psf/annum*

*Plus management fee (5% of Basic Rent)

PARKING

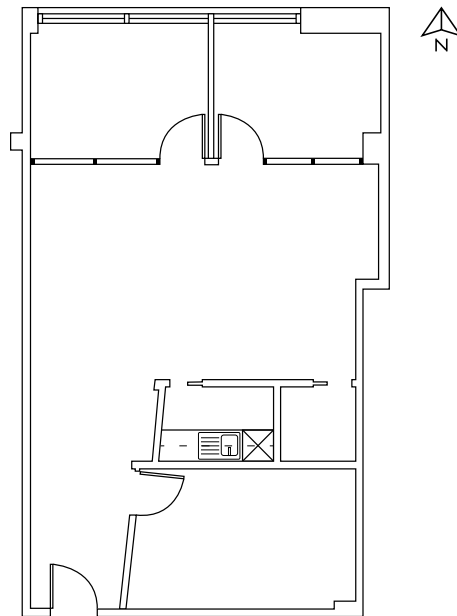
One stall per 500 sf leased at market rate

Location

Harbourside Corporate Centre is positioned centrally in Harbourside Business Park, North Vancouver's most desirable waterfront commercial business area. Located south of Marine Drive directly adjacent to the North Shore Auto Mall at 850 Harbourside Drive, this four-floor office building has rapid access to Marine Drive via Fell Avenue, the Lonsdale commercial corridor and the TransCanada Highway. Harbourside Corporate Centre offers striking views of Downtown Vancouver, Burrard Inlet, Stanley Park, the North Shore's local mountains and Washington State's Mount Baker on a clear day.

Features

- Premium class A office space
- High-quality new construction
- Located in the North Shore's premier waterfront business park
- Close access to many amenities and nearby businesses
- Outstanding views over Burrard Inlet to Downtown Vancouver, Stanley Park and beyond
- HVAC systems in all office areas
- Ample on-site and adjacent street parking
- Proximity to major transit routes including Marine Drive, Lonsdale Avenue and the Trans-Canada Highway
- Attractive landscape design and outside water feature
- EV charging stations



#2900-1055 West Georgia Street
P.O. Box 11109 Royal Centre
Vancouver, BC V6E 3P3, Canada

avisonyoung.com

**AVISON
YOUNG**

**BEST
MANAGED
COMPANIES**
Platinum member

© 2024 Avison Young. All rights reserved. E. & O.E.: The information contained herein was obtained from sources that we deem reliable and, while thought to be correct, is not guaranteed by Avison Young Commercial Real Estate Services, LP ("Avison Young")