

**BLAIR  
BLANCHARD  
STAPLETON**

HALTON LTD.  
REAL ESTATE BROKERAGE



# 720

## GUELPH LINE BURLINGTON, ON

**\$11.00-\$18.00 psf**  
Net Rent

**\$11.20 psf**  
T.M.I. (2023)

**966 – 3,718**  
Square Feet

- ▶ Located in Central Burlington near Burlington Mall
- ▶ Excellent access to public transportation
- ▶ Ideally close to Queen Elizabeth Way
- ▶ Elevator access
- ▶ Ample parking
- ▶ T.M.I. includes janitorial

Kevin J. McAleese  
Broker of Record, SIOR  
905-634-4567  
[mcaleese@bbsrealty.com](mailto:mcaleese@bbsrealty.com)

Rod Wright, B.A.Sc.  
Sales Representative  
905-634-4567  
[wright@bbsrealty.com](mailto:wright@bbsrealty.com)

The information contained herein is provided by the building owner or their agents or representatives and although such information has been obtained from sources considered to be reliable, Blair Blanchard Stapleton Halton Ltd. makes no representation or warranty as to the accuracy or completeness thereof. The information herein contained is subject to change without notice.

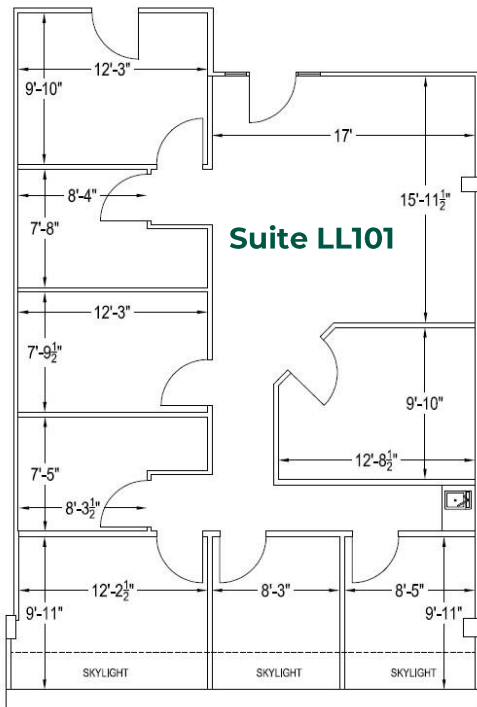
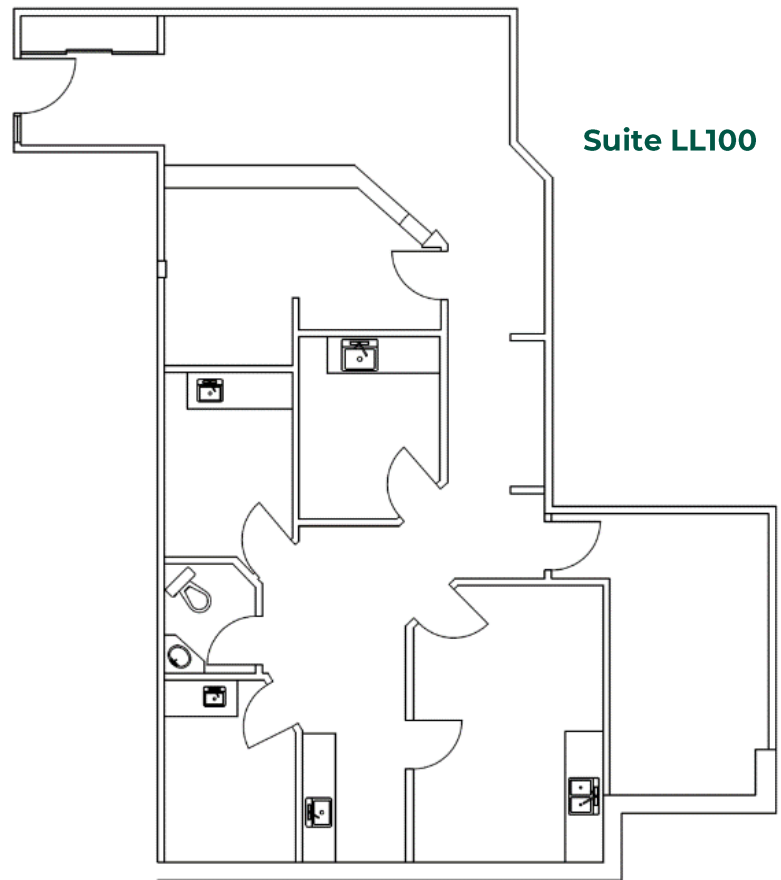
## GUELPH LINE BURLINGTON, ONTARIO LOWER LEVEL

### ADDITIONAL RENT

\$11.20 psf (2023 est)

### AVAILABLE SUITES

SUITE	SIZE	NET RENT
LL100	1,426 SF	\$11.00 PSF
LL101	1,347 SF	\$11.00 PSF



**Kevin J. McAleese**  
Broker of Record, SIOR  
905-634-4567  
mcaleese@bbsrealty.com

**Rod Wright, B.A.Sc.**  
Sales Representative  
905-634-4567  
wright@bbsrealty.com

**BURLINGTON OFFICE**  
5500 North Service Road, Suite 204,  
Burlington, ON L7L 6W6  
O: 905.634.4567 F: 905.637.8724

**BBSREALTY.COM**

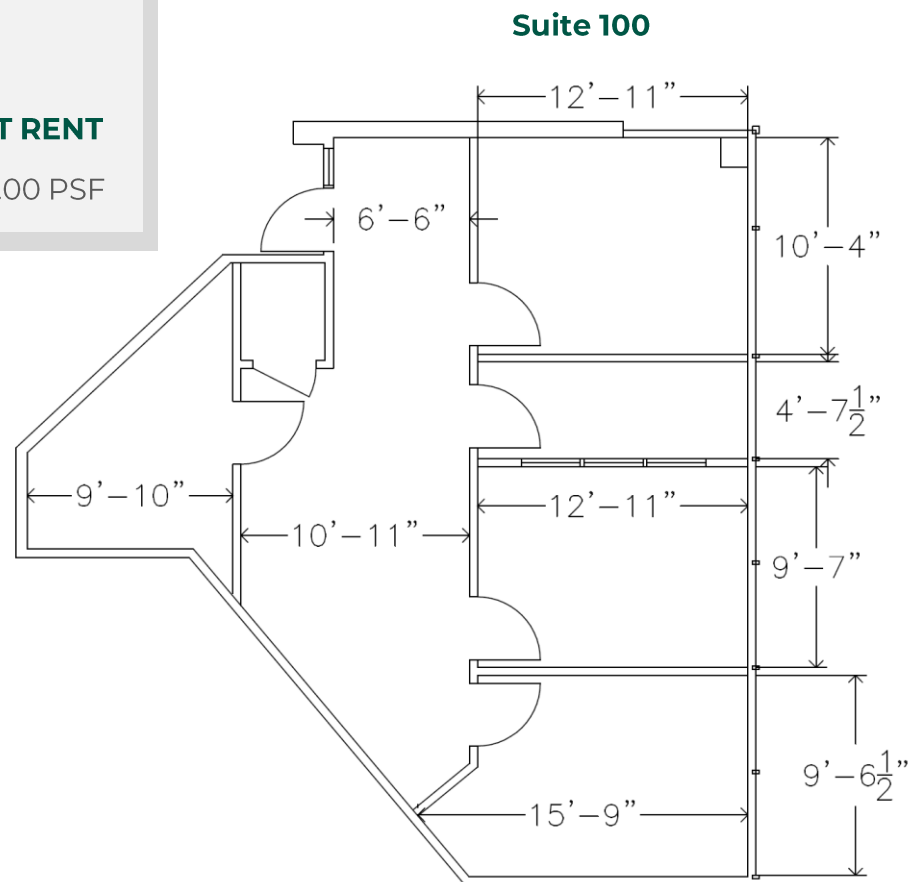
## GUELPH LINE BURLINGTON, ONTARIO FIRST FLOOR

### ADDITIONAL RENT

\$11.20 psf (2023 est)

### AVAILABLE SUITES

SUITE	SIZE	NET RENT
100	966 SF	\$18.00 PSF



AREAS:	USABLE	RENTABLE
	880 SQ. FT.	966 SQ. FT.

**Kevin J. McAleese**  
Broker of Record, SIOR  
905-634-4567  
mcaleese@bbsrealty.com

**Rod Wright, B.A.Sc.**  
Sales Representative  
905-634-4567  
wright@bbsrealty.com

**BURLINGTON OFFICE**  
5500 North Service Road, Suite 204,  
Burlington, ON L7L 6W6  
O: 905.634.4567 F: 905.637.8724

**BBSREALTY.COM**

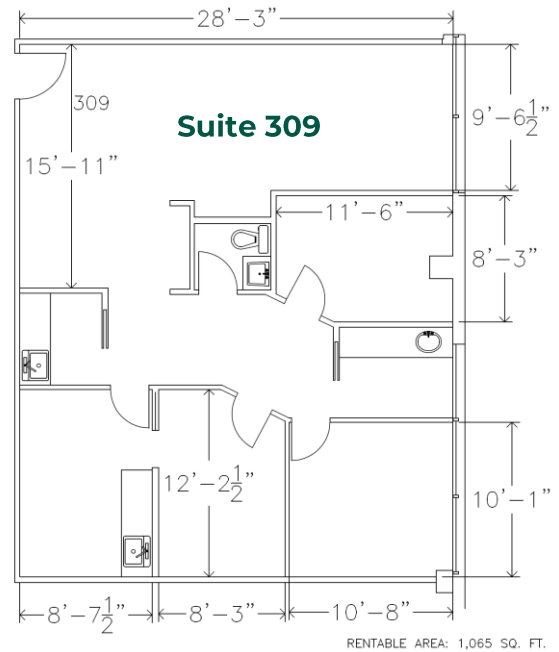
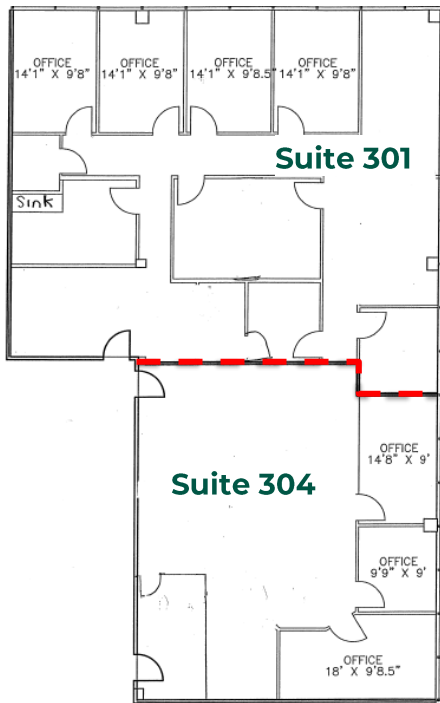
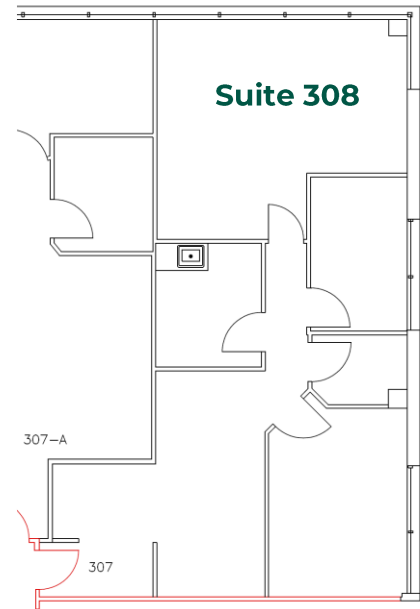
**GUELPH LINE  
BURLINGTON, ONTARIO  
THIRD FLOOR**

## ADDITIONAL RENT

\$11.20 psf (2023 est)

## AVAILABLE SUITES

SUITE	SIZE	NET RENT	
301	2,270 SF	\$16.00 PSF	Combined 3,718 SF
304	1,448 SF	\$16.00 PSF	
308	1,060 SF	\$16.00 PSF	
309	1,065 SF	\$16.00 PSF	



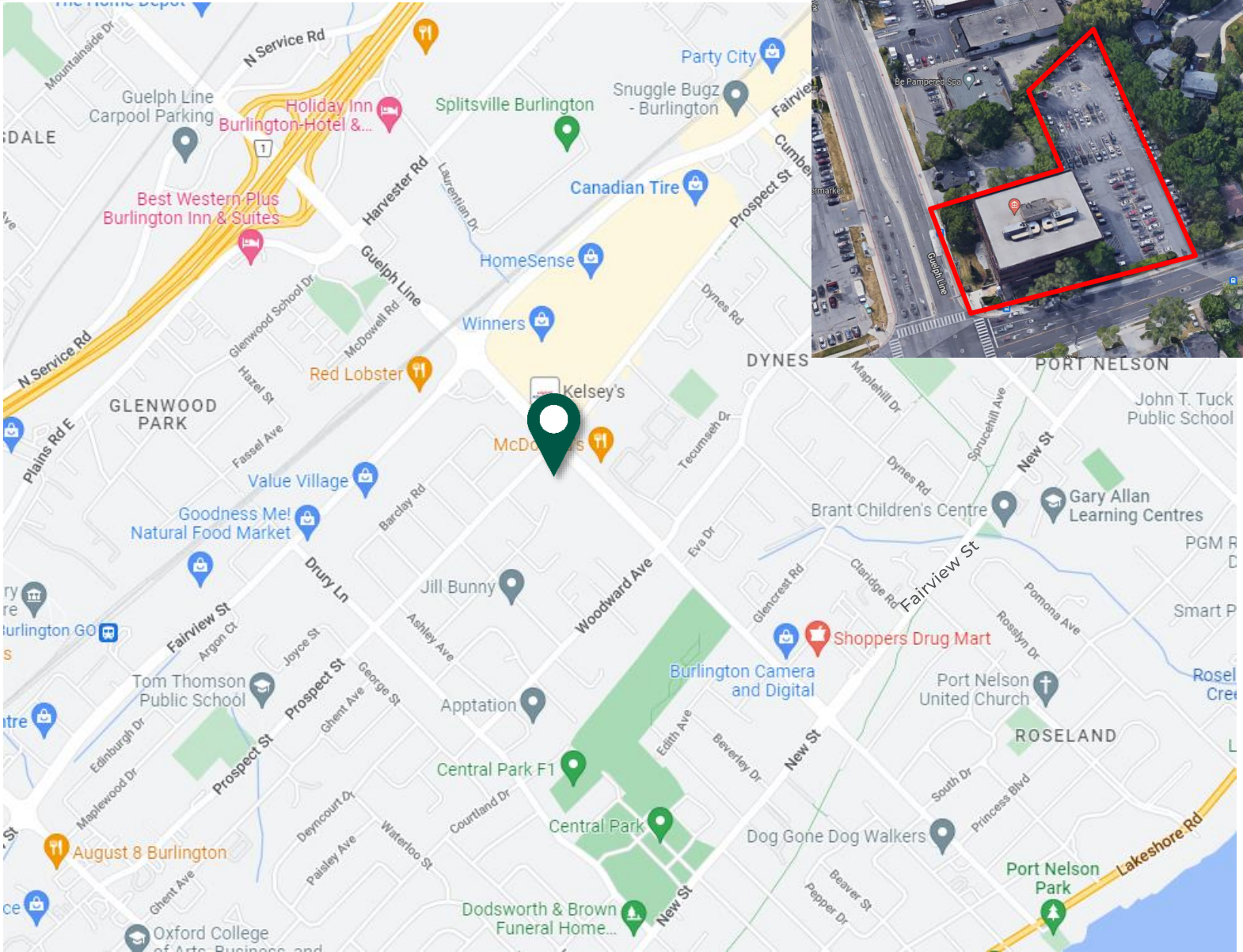
**Kevin J. McAleese**  
Broker of Record, SIOR  
905-634-4567  
mcaleese@bbsrealty.com

**Rod Wright, B.A.Sc.**  
Sales Representative  
905-634-4567  
wright@bbsrealty.com

**BURLINGTON OFFICE**  
5500 North Service Road, Suite 204,  
Burlington, ON L7L 6W6  
O: 905.634.4567 F: 905.637.8724

**BBSREALTY.COM**





The information contained herein is provided by the building owner or their agents or representatives and although such information has been obtained from sources considered to be reliable, Blair Blanchard Stapleton Halton Ltd. makes no representation or warranty as to the accuracy or completeness thereof. The information herein contained is subject to change without notice.

**Kevin J. McAleese**  
Broker of Record, SIOR  
905-634-4567  
mcaleese@bbsrealty.com

**Rod Wright, B.A.Sc.**  
Sales Representative  
905-634-4567  
wright@bbsrealty.com

**BURLINGTON OFFICE**  
5500 North Service Road, Suite 204,  
Burlington, ON L7L 6W6  
O: 905.634.4567 F: 905.637.8724

**BBSREALTY.COM**