



555 West Hastings Street | Vancouver, BC

Office Space at Harbour Centre For Lease

- ▶ 24 hour on-site security staff
- ▶ Underground parking
- ▶ 4-storey glass enclosed atrium
- ▶ Large spacious lobby
- ▶ Fitness centre for tenants
- ▶ Located next to Waterfront Station, Vancouver's primary transit hub
- ▶ Retail service mall including a modern food court

WHERE BUSINESS & TECHNOLOGY MEET: WWW.POLARISREALTY.COM

John Freyvogel

Personal Real Estate Corporation
Vice President, Leasing & Sales
604 691 6640 | jfreyvogel@naicommercial.ca

NAI Commercial

1075 W Georgia St, Suite 1300
Vancouver, BC V6E 3C9
+1 604 683 7535 | naicommercial.ca



POLARIS REALTY

Property Details

Operating Costs & Property Taxes (2026)

\$22.39/SF

Lease Rate

Contact listing agent

Parking

Two parkades with more than 700 stalls that have been granted the Vancouver Police Department's Safer Parking Award with plug-in electric vehicle parking spaces

Building Features/ Amenities

- ▶ 28 storeys of office space with 360 degree panoramic views
- ▶ Retail Mall shopping and recently renovated Food Court featuring a diverse mix of dining options
- ▶ BOMA BEST GOLD certified
- ▶ Fitness Centre with low annual memberships and secured Bike Storage
- ▶ Communicate through Angus Anywhere 24/7, an on-line Tenant service system that allows direct contact with Management and on-site Engineering Staff

Harbour Centre 555 West Hastings St Vancouver, BC

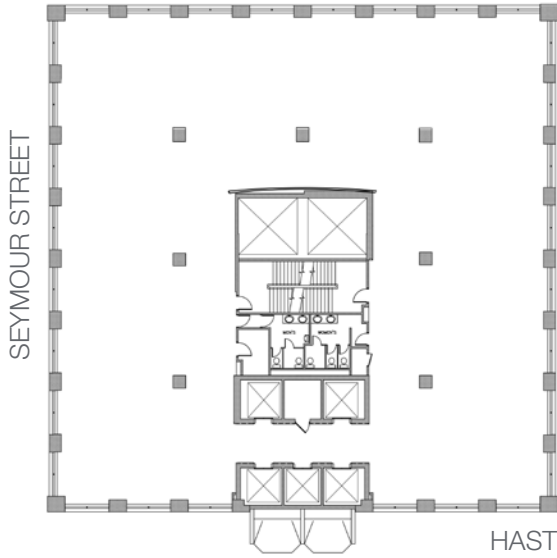
Location

One of Vancouver's iconic landmarks, Harbour Centre is a one-of-a-kind complex where business and technology meet. Located on the Waterfront, tenants enjoy spectacular unobstructed views of Burrard Inlet and the North Shore Mountains.

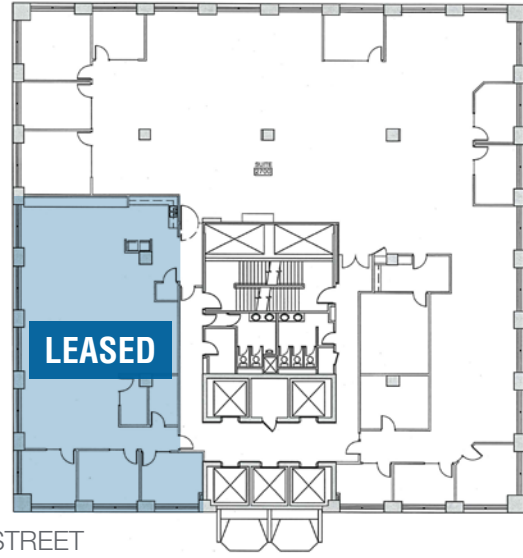
Across the road from the West Coast Express, SkyTrain, and Seabus, and just steps away from the Seawall, Harbour Centre's central location guarantees unlimited accessibility in and around the City of Vancouver and all of its amenities.



Unit 1000
Up to 11,974 SF



Unit 2700 (Sub Penthouse)
Up to 8,924 SF



BUILDING STANDARD ELEVATOR LOBBY



27TH / 28TH FLOOR VIEWS & ELEVATORS

10th Floor Plan | Up to 11,974 SF (Landlord will demise)

