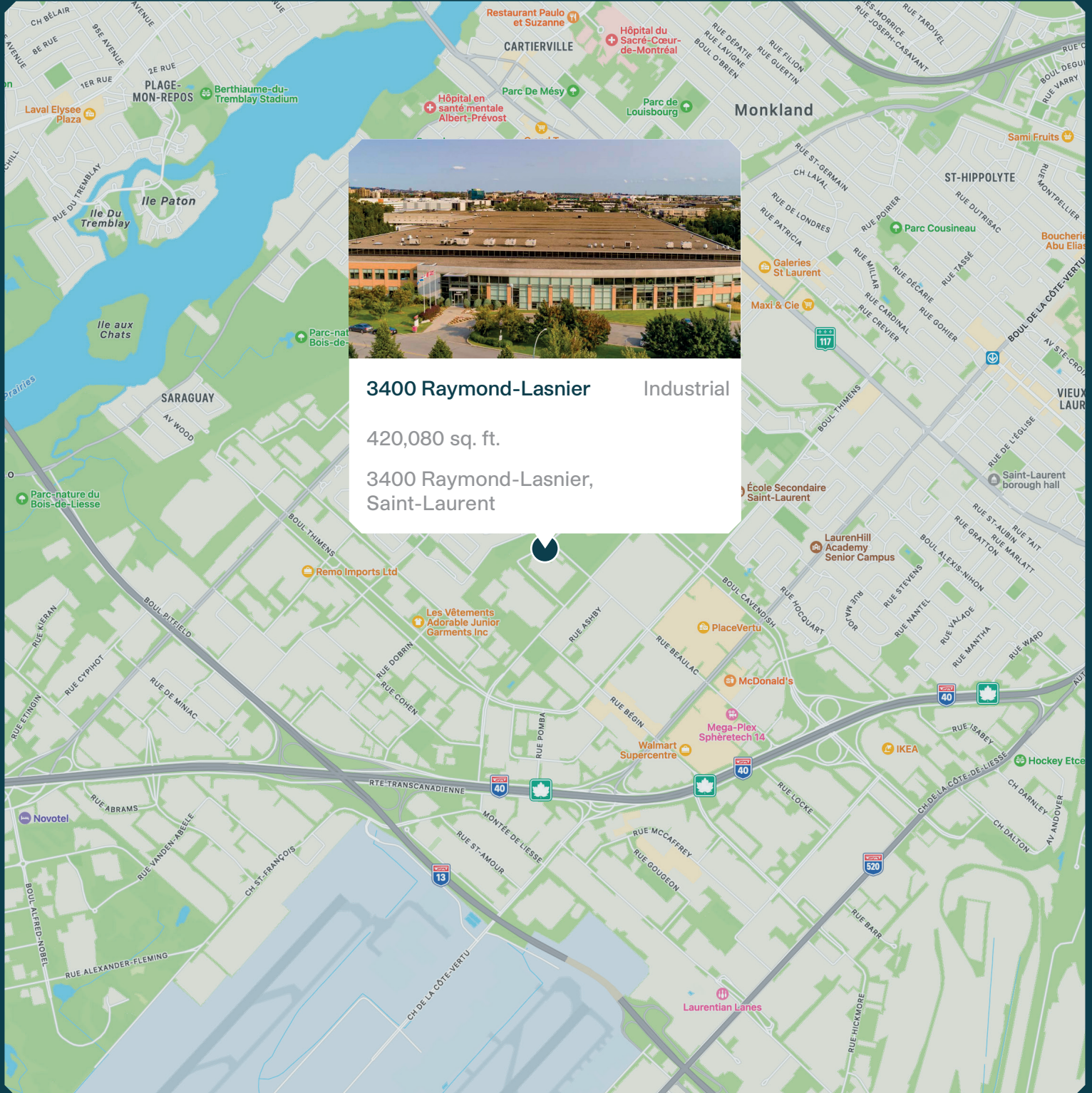


3400 Raymond-Lasnier



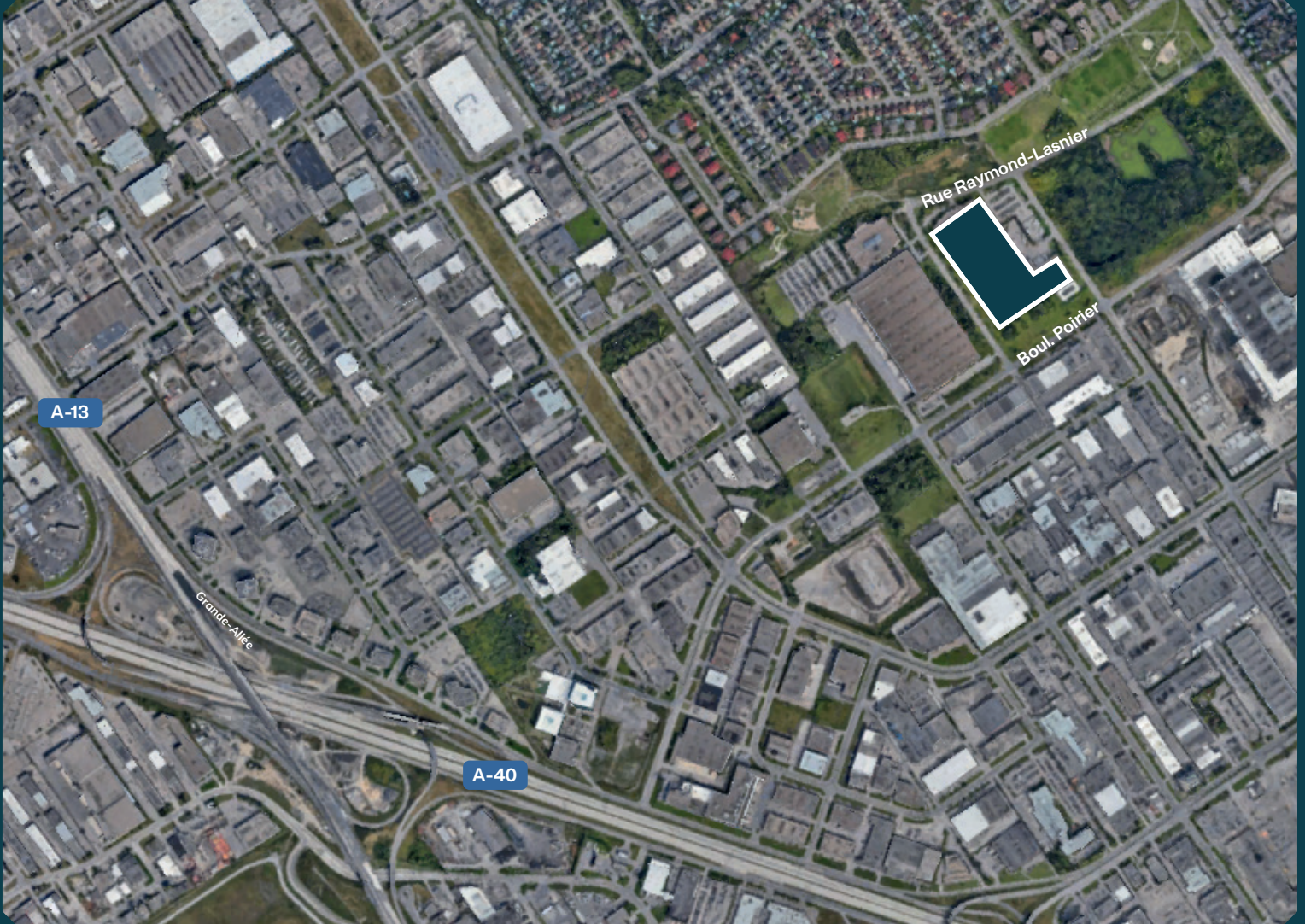
MONTONI

Building on our word
for tomorrow



3400 Raymond-Lasnier Industrial
420,080 sq. ft.
3400 Raymond-Lasnier,
Saint-Laurent

Neighborhood Map



LAND

Total area: 887,221 sq. ft

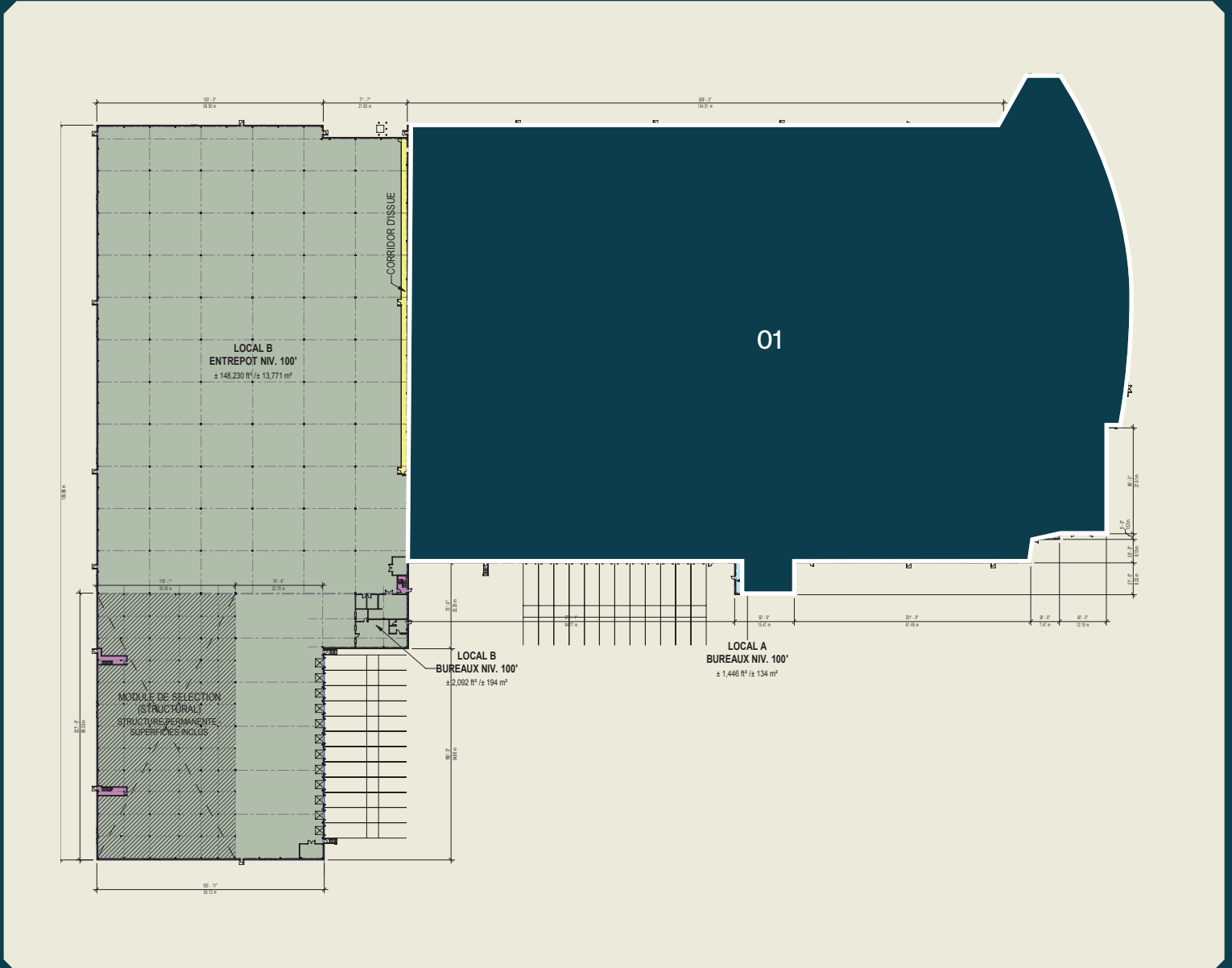
BUILDING

Available space: 420,080 sq. ft.

ACCESS

Parking spaces available
Easy access to highways 13, 40
Bus 70

Ground floor



01 - 420,080 sq. ft.

Photos



Photos



Summary



Relevant Information

- Available: Early 2024
- Year of construction: 2005
- Total available area: 420,080 sq. ft.
- Garage doors "Drive-in" : Total of one (1) door
- Loading dock doors : Total of twenty six (26) doors
- Clear Height - Warehouse: 30 ft.
- Electrical capacity of the building - 2,000 A
- Warehouse lighting - LED
- Trailer parking space - 30 spaces

MONTONI

For any questions related to this
presentation, please contact:
abouchard@groupemontoni.com