



MEDICAL SUITES  
**READY TO OCCUPY**

## 115 HUMBER COLLEGE BOULEVARD

ETOBICOKE WELLNESS CENTRE | ETOBICOKE, ON



**FOR MORE INFORMATION:**

\*Sales Representative

**Medical:**

**KATHRYN SCHUBERT\***

Vice President

416 798 6234

[kathryn.schubert@cbre.com](mailto:kathryn.schubert@cbre.com)



# CBRE



Medical Suites  
Immediately Available from 964 - 8,369 sq. ft.

| AVAILABILITIES: |                             |                |                               |
|-----------------|-----------------------------|----------------|-------------------------------|
| Suite 611:      | 1,452 sq. ft.               | Suite 629:     | 2,843 sq. ft.                 |
| Suite 613-614:  | 4,355 sq. ft.               | Suite 711:     | 1,306 sq. ft. [move-in ready] |
| Suite 615-617:  | 8,369 sq. ft.               | Suite 713:     | 1,007 sq. ft.                 |
| Suite 620:      | 964 sq. ft. [move-in ready] | Suite 720-721: | 2,433 sq. ft.                 |
| Suite 622:      | 1,025 sq. ft.               | Suite 724:     | 3,317 sq. ft.                 |
| Suite 625-626:  | 1,930 sq. ft.               |                |                               |

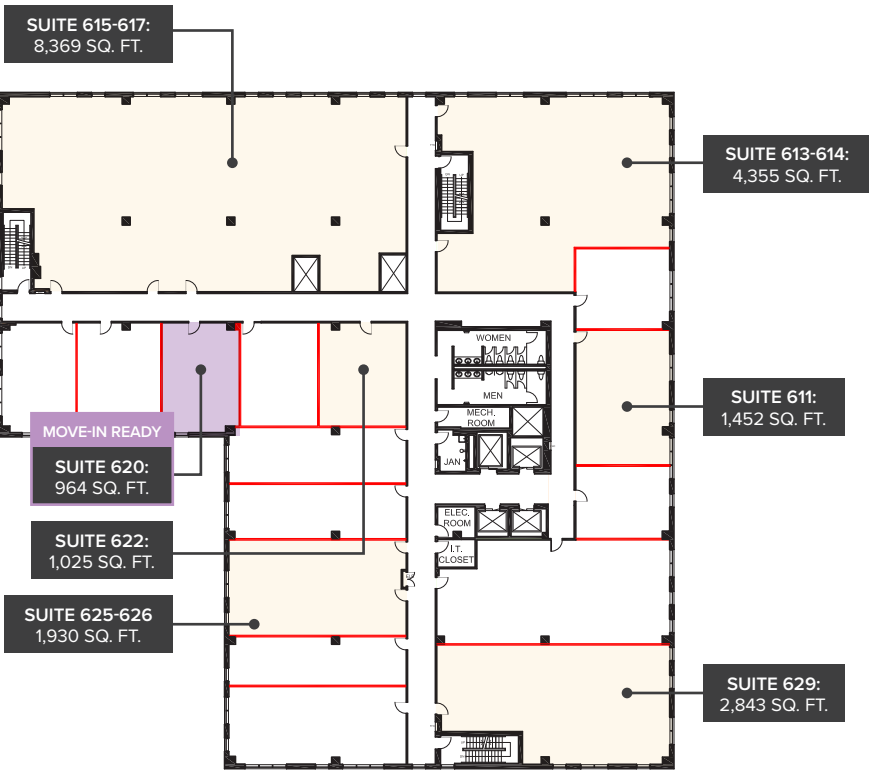
Asking Rent: \$25.00 per sq. ft.

Additional Rent (2023 Estimate): \$18.84 per sq. ft.  
Includes utilities & janitorial

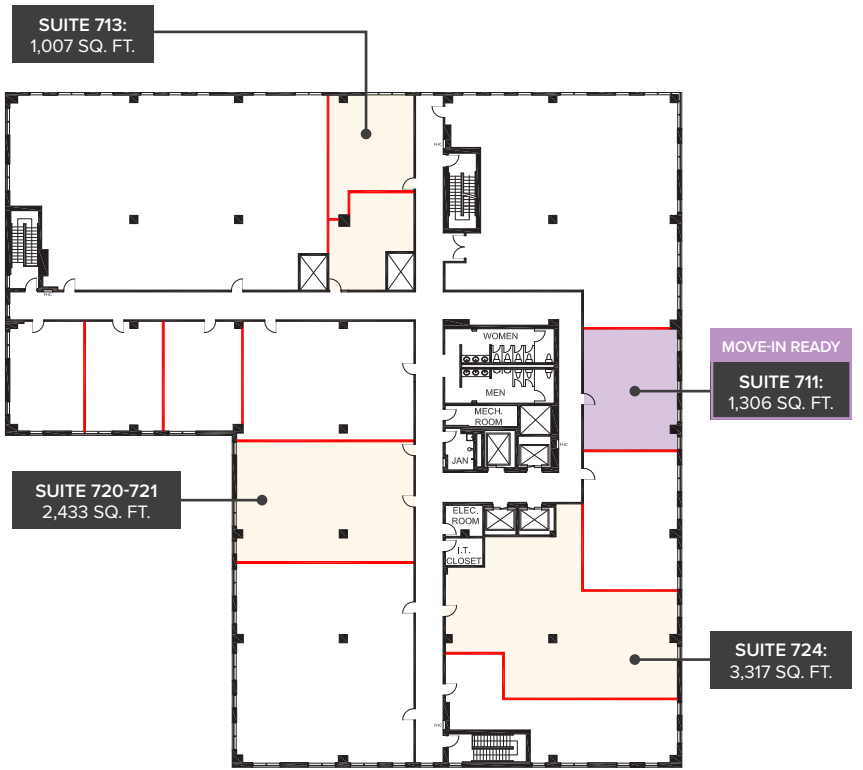
Possession: Immediate

- Accessible via Public Transit: **Brampton, TTC & Mississauga MiWay** and **Malton & Etobicoke North GO Stations** located nearby
- Access to **Highways 407, 409, 427 & 27**
- Ground floor retail food service area includes **The Grill, The Culinary, Salad Bar, Starbucks & Tim Hortons** located at the Etobicoke General Hospital
- Other on-site amenities include a **pre-anesthesia clinic, pharmacy & a laboratory**
- In-building food service** coming soon

FLOOR  
PLANS



6th Floor



7th Floor





# AMENITIES & TRANSPORTATION

**FINCHWOOD PLAZA**

- BarBURRITO
- Burger King
- Desi Spice - Grand Indian Buffet
- Drupatis27
- Honest Restaurant
- McDonald's

**QUEENS PLATE PLAZA**

- Pane Fresco at Fortinos
- Mandarin Restaurant
- Rotisserie Frenchie's
- Ralph's West Indian Delights Inc.

**REXDALE COMMERCIAL CENTRE**

- Al-Meezan Spicy Grill
- Bollywood Burgrill
- Da House of Jerk

**WOODBINE MALL**

- Bourbon St. Grill
- Burger King
- Charley's Philly Steaks
- Fusia Asian Kitchen
- Jimmy the Greek
- Kabob Express

- Osmow's Shawarma
- Pizza Hub
- Punjabi Sweets & Restaurant
- Starbucks
- Subway
- Tim Hortons

- Mr. Sub
- Popular Pizza
- Sweet Mahal

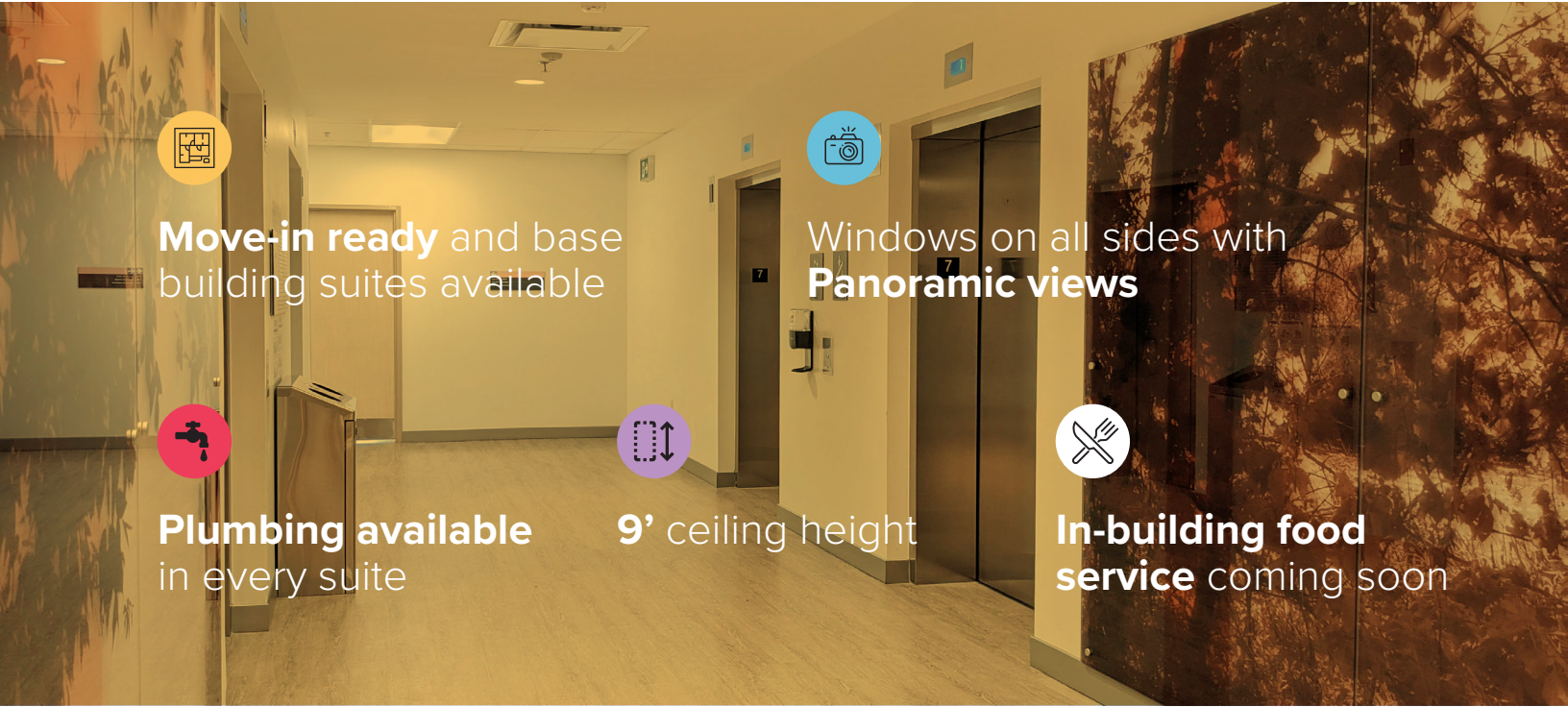
- Meltwich
- Osmow's Shawarma
- Real Fruit Bubble Tea
- Subway
- Sushi House
- Villa Medina

- Subway
- Souperlicious
- Shawarma and Kebob Place

- Shawarma and Kebob Place
- Souperlicious
- Subway

**Excellent access to public transit:**  
GO Bus, TTC, MiWay, Brampton & YRT

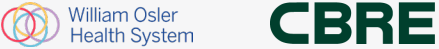
- GO Transit Bus: Route 38A Bolton/Malton
- MiWay: Routes 22 & 11
- Brampton Transit: Route 50
- TTC: Routes 96, 191, 336
- York Region Transit: Route 7



**FOR MORE INFORMATION:**  
\*Sales Representative

**Medical:**

**KATHRYN SCHUBERT\***  
Vice President  
416 798 6234  
kathryn.schubert@cbre.com



CBRE Limited, Real Estate Brokerage | 5935 Airport Road | Suite 700 | Mississauga, ON | L4V 1W5 | [www.cbre.ca](http://www.cbre.ca)

This disclaimer shall apply to CBRE Limited, Real Estate Brokerage, and to all other divisions of the Corporation ("CBRE"). The information set out herein, including, without limitation, any projections, images, opinions, assumptions and estimates obtained from third parties (the "Information") has not been verified by CBRE, and CBRE does not represent, warrant or guarantee the accuracy, correctness and completeness of the Information. CBRE does not accept or assume any responsibility or liability, direct or consequential, for the Information or the recipient's reliance upon the Information. The recipient of the Information should take such steps as the recipient may deem necessary to verify the Information prior to placing any reliance upon the Information. The Information may change and any property described in the Information may be withdrawn from the market at any time without notice or obligation to the recipient from CBRE. CBRE and the CBRE logo are the service marks of CBRE Limited and/or its affiliated or related companies in other countries. All other marks displayed on this document are the property of their respective owners. All Rights Reserved. Mapping Sources: Canadian Mapping Services [canadamapping@cbre.com](mailto:canadamapping@cbre.com); DMTI Spatial, Envirionics Analytics, Microsoft Bing, Google Earth