



3260 - 3571 Viking Way, Richmond, B.C.



For Lease

Exposure to
Viking Way

Close proximity to
Knight Street Bridge

Rare small bay unit
with dock loading

Sean Bagan

Personal Real Estate Corporation
Vice President
+1 604 661 0821
sean.bagan@colliers.com

Jack Hall

Associate
+1 604 661 0896
jack.hall@colliers.com



Unit 3 - 3260 Viking Way

Location

Ideally located along Viking Way in the Crestwood Industrial area of North Richmond near both Bridgeport Road and the Knight Street Bridge. The building's central location offers quick and easy access to the municipalities of Vancouver and Burnaby to the north via Knight Street, or Delta, the Fraser Valley, and the US/Canada border to the south and east via Highways 91 and 99.

Zoning

IB1 - Industrial Business Park

Building Features

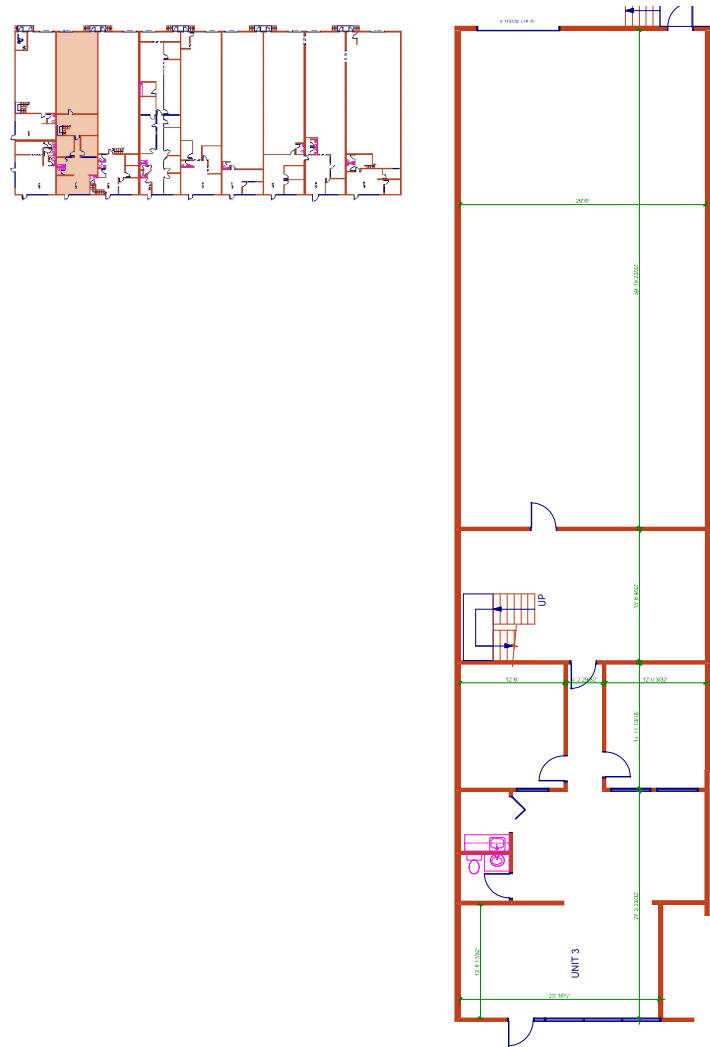
- Professionally owned and managed by Concert Properties
- Premier corporate image and identity
- Front showroom and two (2) private offices
- Small kitchenette
- One (1) dock loading door
- 20' clear warehouse ceiling heights
- Ample parking

Available Area (Est.)

Ground Floor Office/Showroom Area	+/- 1,229 SF
Ground Floor Warehouse Area	+/- 2,307 SF
Total Area	3,536 SF

Available

Immediate



Basic Lease Rate

Please contact listing agents.

Operating Costs & Taxes

\$5.62 per SF per annum (2024 estimate)

**excluding 3% management fee on gross rent*

Unit 12 - 3511 Viking Way

Location

Ideally located along Viking Way in the Crestwood Industrial area of North Richmond near both Bridgeport Road and the Knight Street Bridge. The building's central location offers quick and easy access to the municipalities of Vancouver and Burnaby to the north via Knight Street, or Delta, the Fraser Valley, and the US/Canada border to the south and east via Highways 91 and 99.

Zoning

IB1 - Industrial Business Park

Building Features

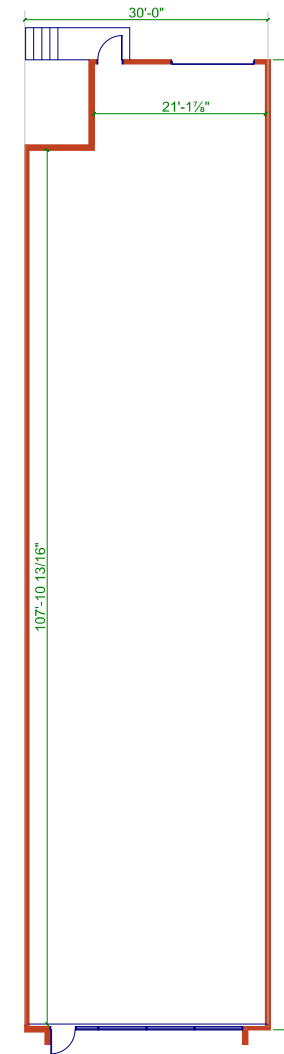
- Professionally owned and managed by Concert Properties
- Premier corporate image and identity
- One (1) dock loading door
- 18' clear warehouse ceiling heights
- Ample parking

Available Area (Est.)

Ground Floor Warehouse Area	3,480 SF
Total Area	3,480 SF

Available

March 1, 2024



Basic Lease Rate

Please contact listing agents.

Operating Costs & Taxes

\$5.62 per SF per annum (2024 estimate)

*Excluding 3% management fee on gross rent

Unit 3 - 3571 Viking Way

Location

Ideally located along Viking Way in the Crestwood Industrial area of North Richmond near both Bridgeport Road and the Knight Street Bridge. The building's central location offers quick and easy access to the municipalities of Vancouver and Burnaby to the north via Knight Street, or Delta, the Fraser Valley, and the US/Canada border to the south and east via Highways 91 and 99.

Zoning

IB1 - Industrial Business Park

Building Features

- Professionally owned and managed by Concert Properties
- Premier corporate image and identity
- Front showroom and two (2) private offices
- One (1) dock loading door
- 18' clear warehouse ceiling heights
- Ample parking

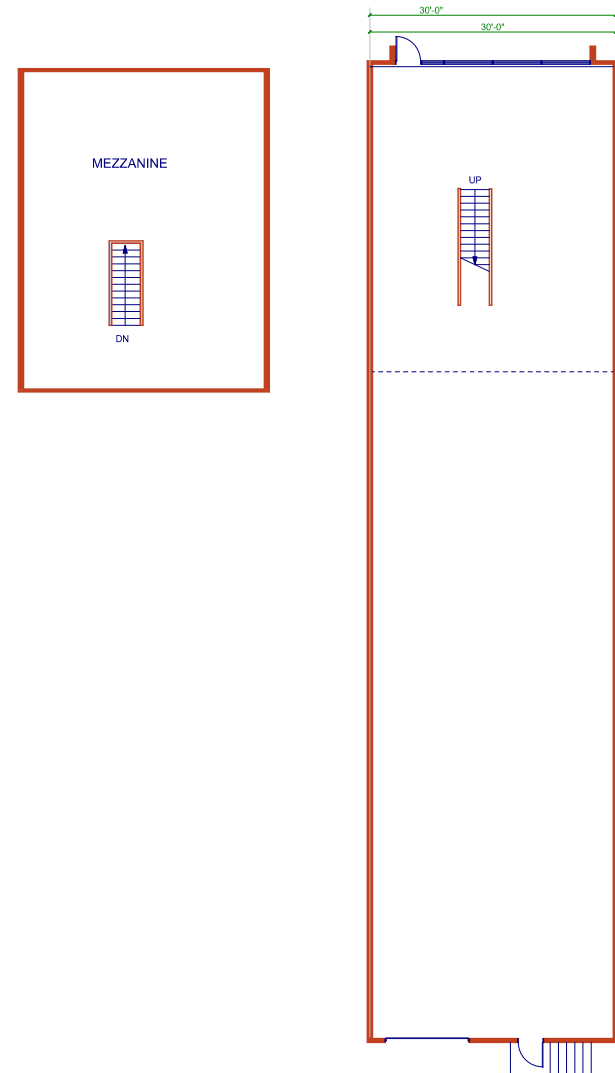
Available Area (Est.)

Ground Floor Office/Showroom Area	1,000 SF
Ground Floor Warehouse Area	2,600 SF
Total Area	3,600 SF

Available

February 1, 2024

This document has been prepared by Colliers for advertising and general information only. Colliers makes no guarantees, representations or warranties of any kind, expressed or implied, regarding the information including, but not limited to, warranties of content, accuracy and reliability. Any interested party should undertake their own inquiries as to the accuracy of the information. Colliers excludes unequivocally all inferred or implied terms, conditions and warranties arising out of this document and excludes all liability for loss and damages arising there from. This publication is the copyrighted property of Colliers and /or its licensor(s). © 2024. All rights reserved. This communication is not intended to cause or induce breach of an existing listing agreement. 2/2024MV



Basic Lease Rate

Please contact listing agents.

Operating Costs & Taxes

\$5.62 per SF per annum (2024 estimate)

**Excluding 3% management fee on gross rent.*