

7,311 SQ.FT. OF AIR-CONDITIONED OFFICE SPACE



FOR LEASE

7351 VANTAGE WAY
Delta, BC

 **CUSHMAN &
WAKEFIELD**

John Weiss
Senior Associate
604 640 5865
john.weiss@cushwake.com

Ron J Emerson
Personal Real Estate Corporation
Vice President
604 608 5921
ron.emerson@cushwake.com

Suite 700 - 700 West Georgia Street
PO Box 10023, Pacific Centre
Vancouver, BC V7Y 1A1
604 683 3111 / cushmanwakefield.ca

FOR LEASE

7351 VANTAGE WAY

Delta, BC



LOCATION

7351 Vantage Way, a flex office/warehouse project strategically located in Tilbury Industrial Park, which has established itself as one of the premier industrial parks in Metro Vancouver. This high-quality office/warehouse project offers easy access via River Road and the South Fraser Perimeter Road to Highways 99, 91 and 17, which provide excellent links to all areas of the Lower Mainland, Tsawwassen Ferry Terminal, Deltaport Container Terminal, Fraser Valley, and the US Border.

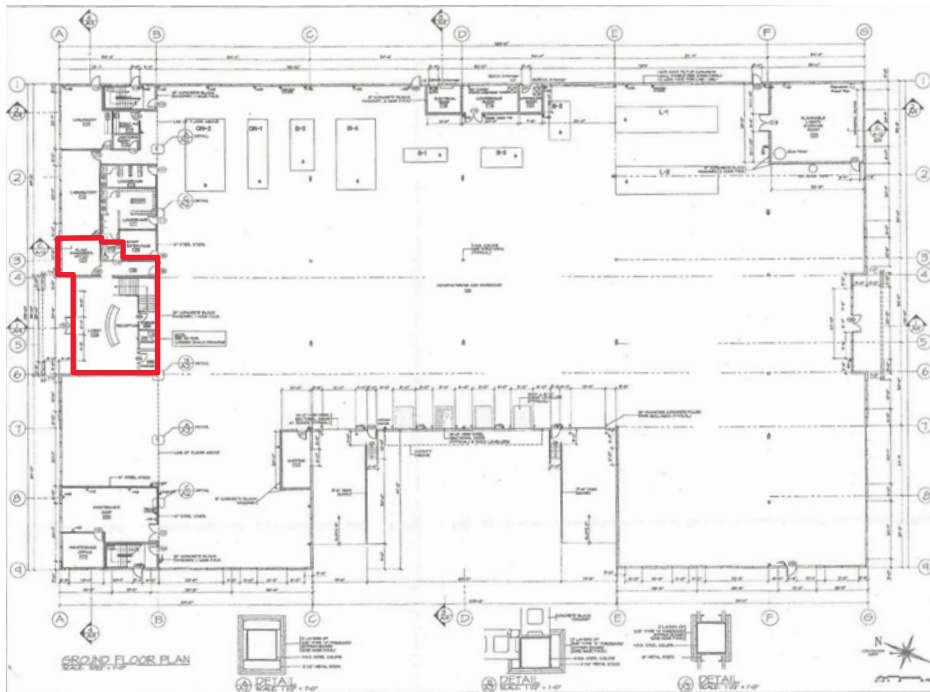
AVAILABLE AREA

Ground floor reception/offices	1,179 sf
Second floor offices/boardroom	6,132 sf
Total Area	7,311 sf

ZONING

I2 Medium Impact Industrial Zoning. The intent of this zoning district is to provide for industrial uses, independent office uses and specified limited retail uses.

GROUND FLOOR ENTRANCE



FEATURES

- High quality offices with extensive glazing
- Fully air-conditioned and sprinklered
- Numerous private offices with open areas suitable for work stations
- Washrooms up and down with a handicap washroom on ground floor
- Large boardroom and lunchroom
- 245 sf balcony off 2nd floor boardroom
- Fluorescent lighting throughout
- Zone metered BC Hydro & natural gas
- 10' - 14' clear ceiling heights
- Ample parking outside front door
- Public transit minutes away

LEASE RATE

Basic Rent: Contact the listing agents

Estimated Taxes & Op Costs (\$4.65 psf): \$2,833.00 per mo.*

*(Does not include utilities & janitorial)

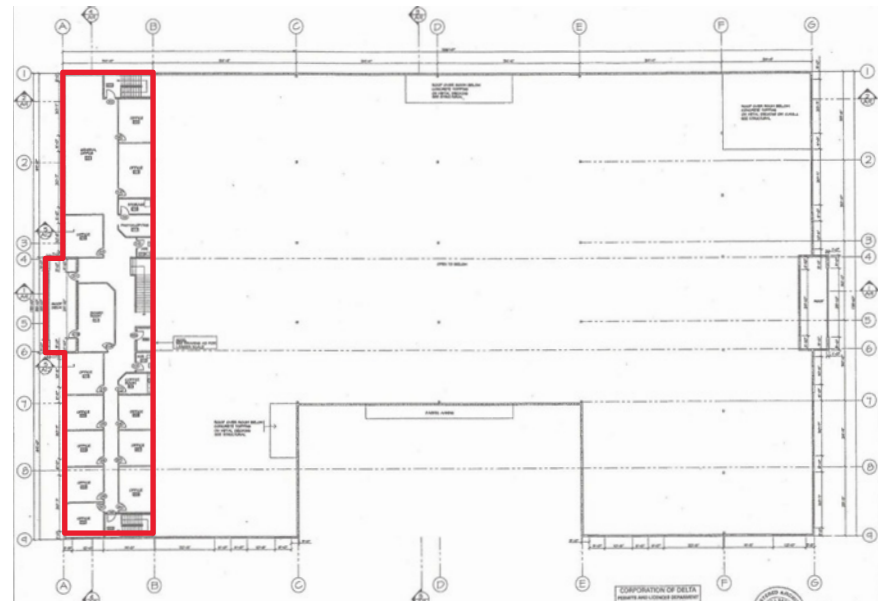
COMMENTS

This space boasts extensive demising with fully finished office layouts. For a floor plan showing the layout and photographs of the interior, contact the listing agents. To arrange a tour requires a minimum of 24 hours' notice and it may not be possible to arrange it for the following day. Please phone the Listing Agents well in advance. Thank you.

AVAILABLE

December 1, 2022

SECOND FLOOR PLAN



John Weiss

Senior Associate
604 640 5865
john.weiss@cushwake.com

Ron J Emerson

Personal Real Estate Corporation
Vice President
604 608 5921
ron.emerson@cushwake.com

E.&O.E.: This communication is not intended to cause or induce breach of an existing agency agreement. The information contained herein was obtained from sources which we deem reliable and, while thought to be correct, is not guaranteed by Cushman & Wakefield ULC PRJ0761633 (08/22/mf)