



For Lease: Office

595

Adelaide Street E

Full Building Opportunity of 19,500 SF or  
divisible by full floor(s)

**Lennard:**

Here is where your business will *grow*.

[lennard.com](http://lennard.com)



# 595 Adelaide Street E

Creative brick and beam space available for lease at the corner of Parliament St. and Adelaide St E in Downtown Toronto.



Available Space

1<sup>st</sup> Floor: 4,715 SF

2<sup>nd</sup> Floor: 4,715 SF

3<sup>rd</sup> Floor: 5,035 SF

4<sup>th</sup> Floor: 5,035 SF

Total: 19,500 SF

(1st and 2nd floors connected by internal staircase)



Gross Rent

\$42.50 PSF

Plus Hydro & Janitorial



Term

Until November 30, 2028

(or Flexible)



Availability

Immediate



Listing Agent

Joseph Wise\*

Senior Vice President

416.649.5909

jwise@lennard.com

\*Sales Representative

View the Virtual Tour!

[1<sup>st</sup> & 2<sup>nd</sup> Floor - Click here](#)

[3<sup>rd</sup> Floor - Click here](#)

[4<sup>th</sup> Floor - Click here](#)

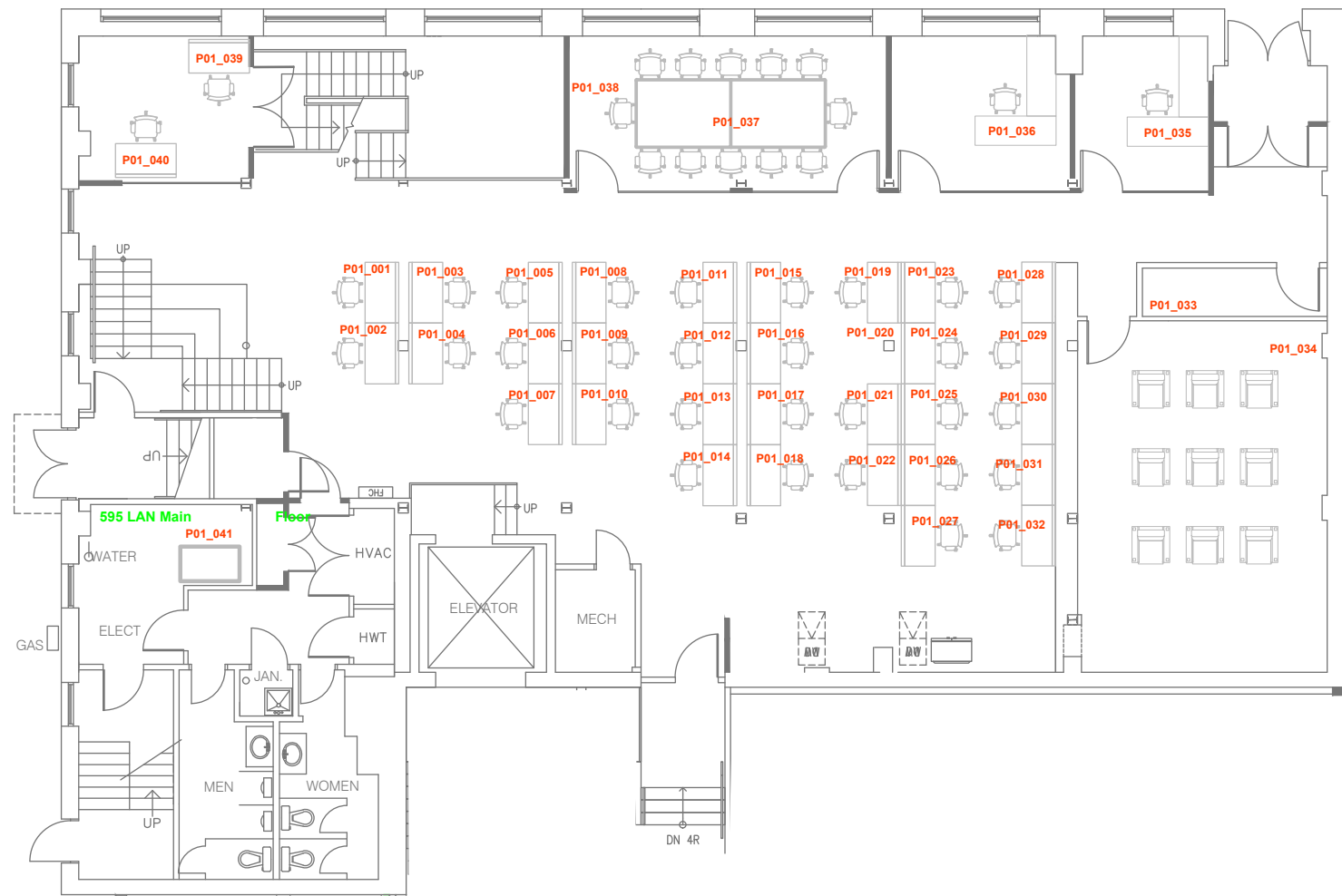
## Property Highlights

- Full building with potential branding opportunity, or divisible by floor
- 1<sup>st</sup> and 2<sup>nd</sup> floors connected by staircase; 2<sup>nd</sup> floor has private gym
- Creative spaces with excellent natural light; primarily open concept with meeting spaces
- Additional spaces available in neighbouring building – please inquire for flyer

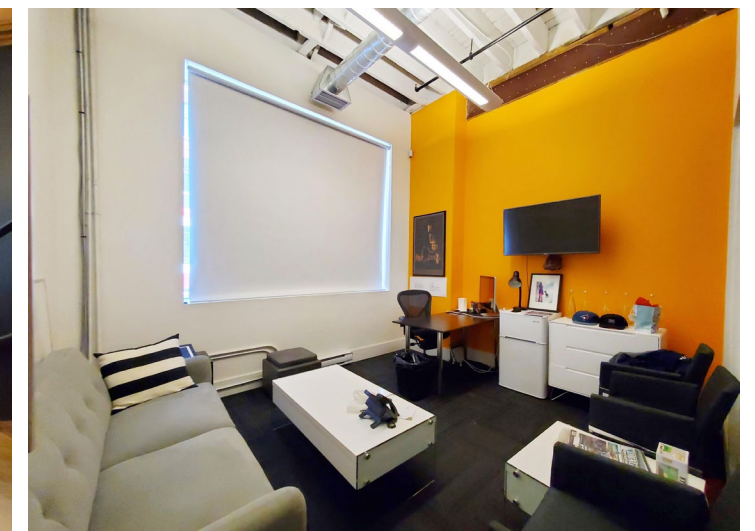
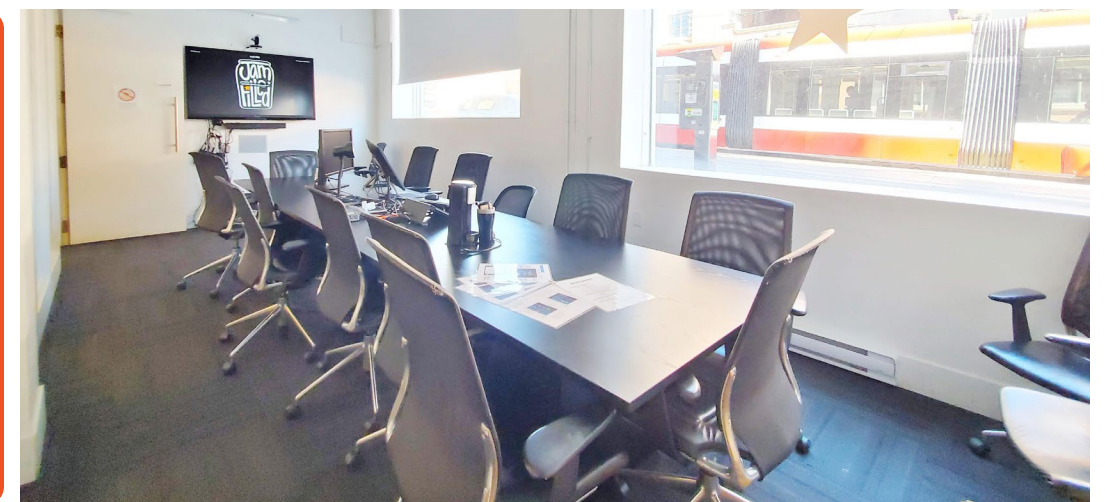


# 595 Adelaide Street E: 1st Floor

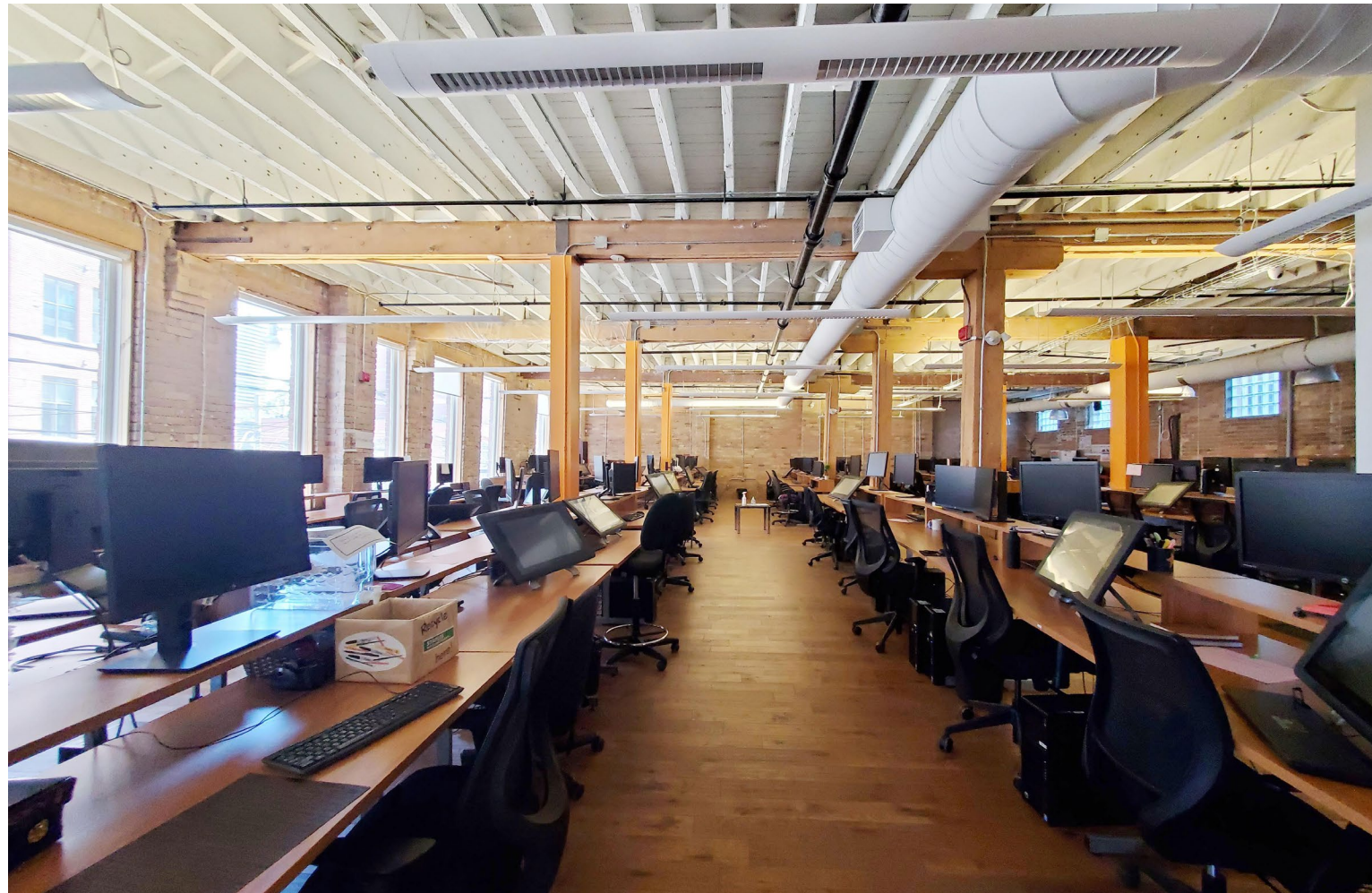
## Floor Plan



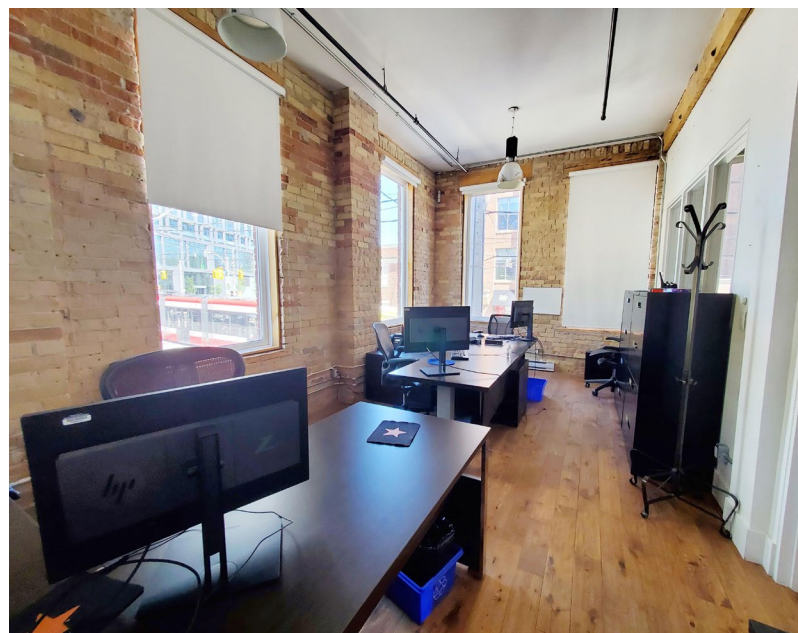
[Click here for Virtual Tour: 1st & 2nd Floor](#)



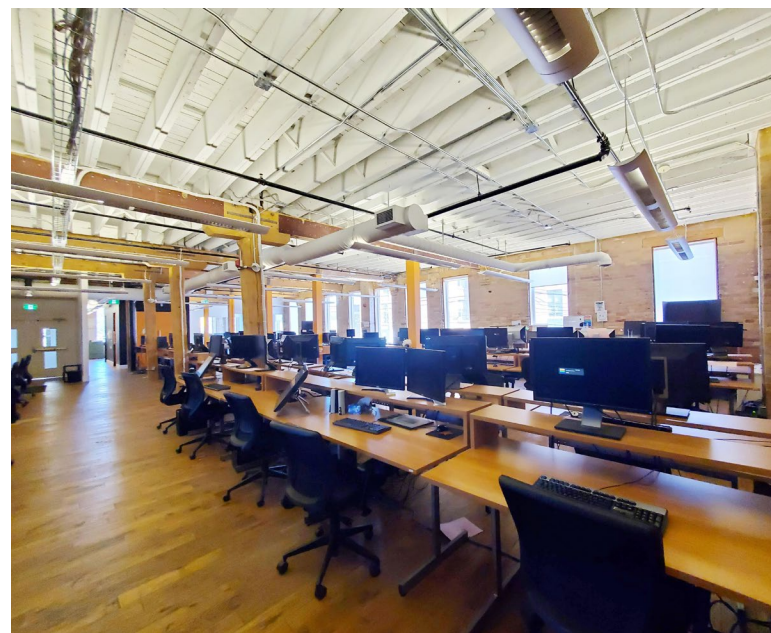
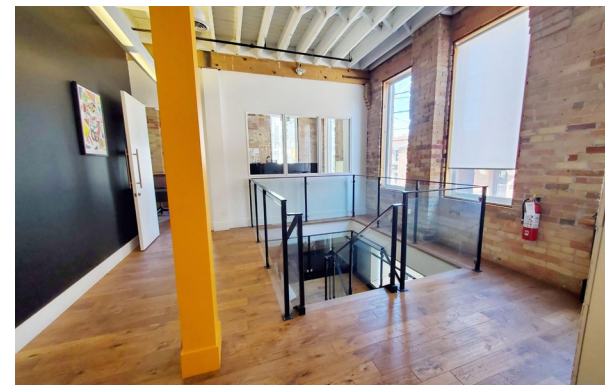
# 595 Adelaide Street E: 2nd Floor



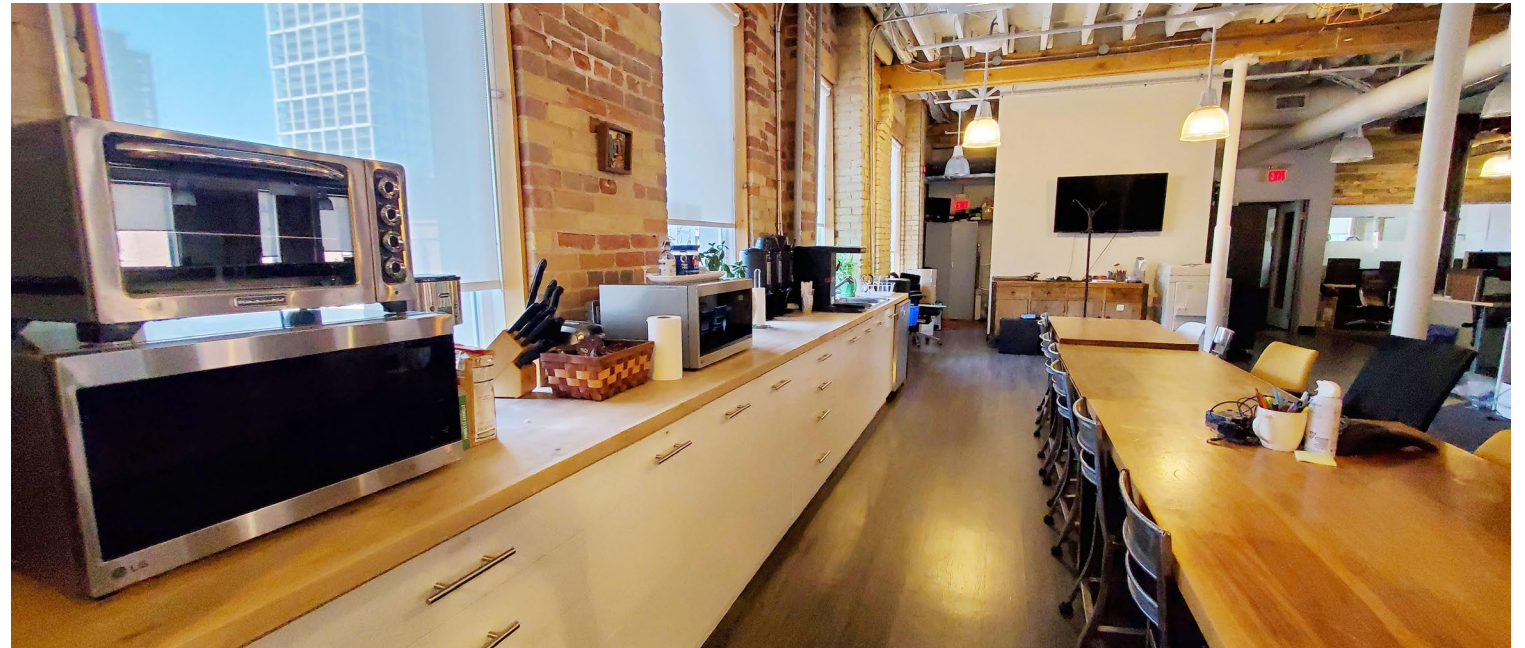
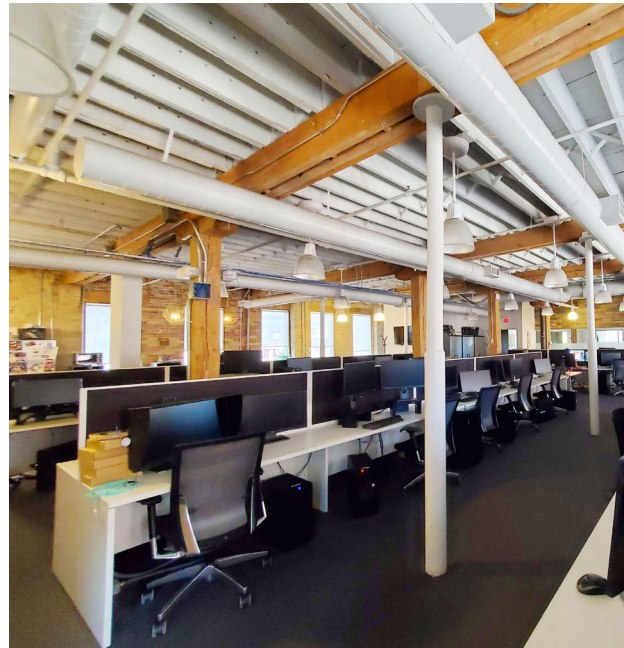
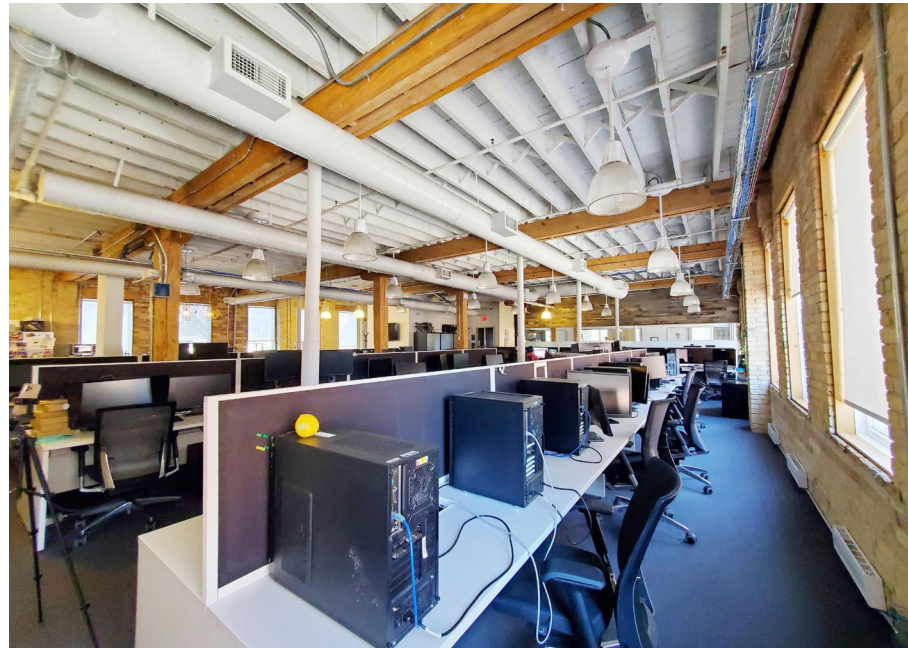
Floor Plan



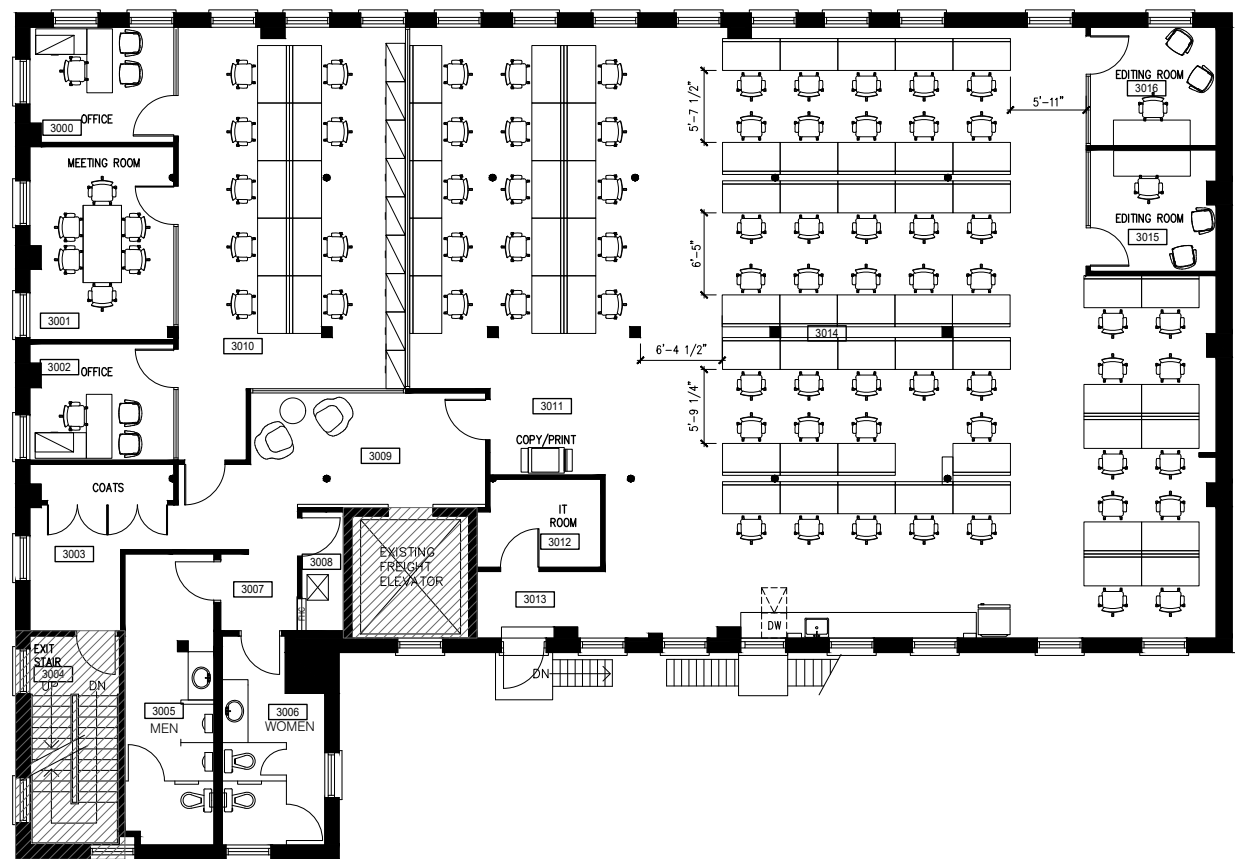
[Click here for Virtual Tour:  
1st & 2nd Floor](#)



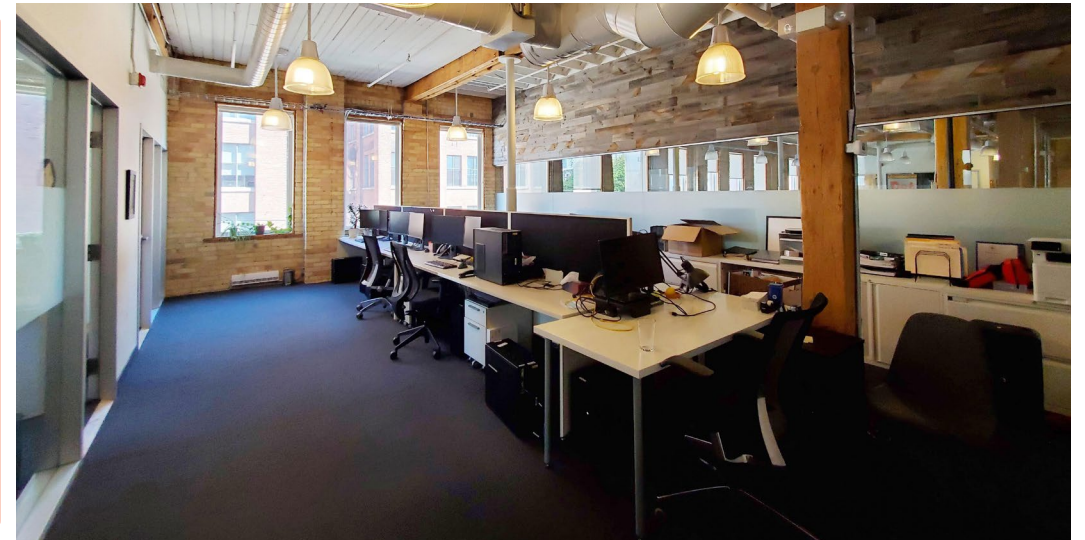
# 595 Adelaide Street E: 3rd Floor



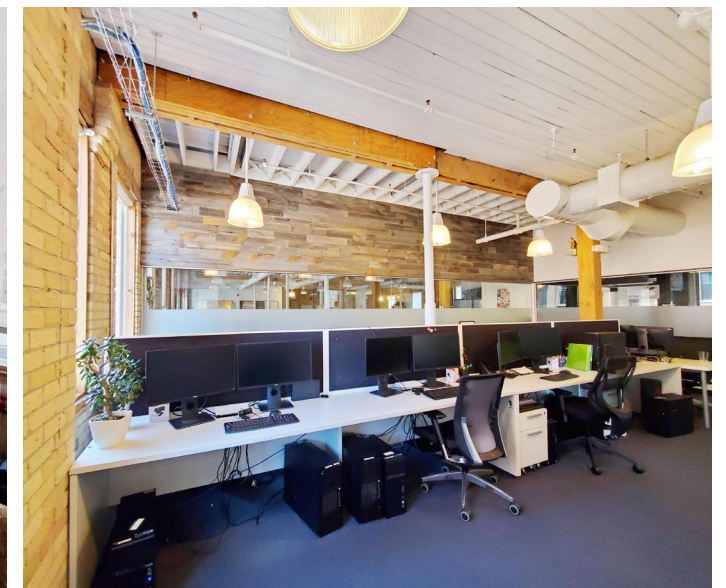
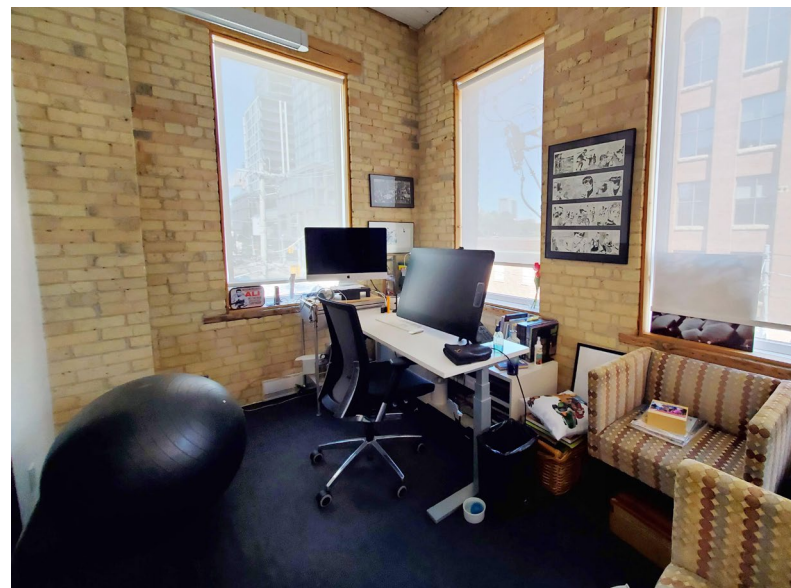
Floor Plan



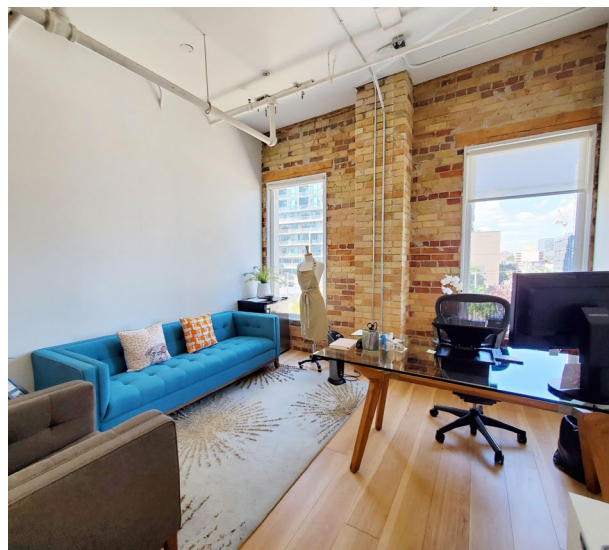
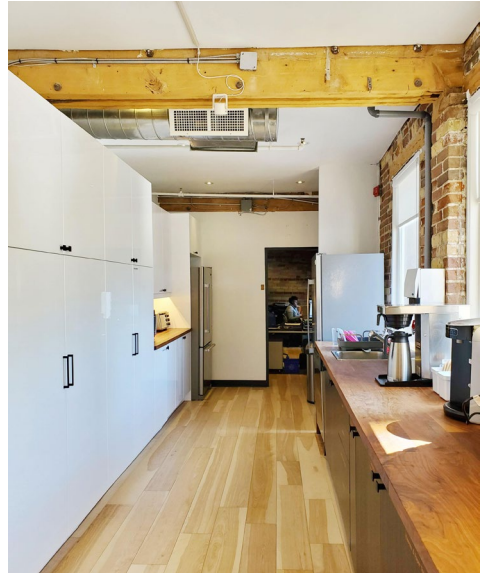
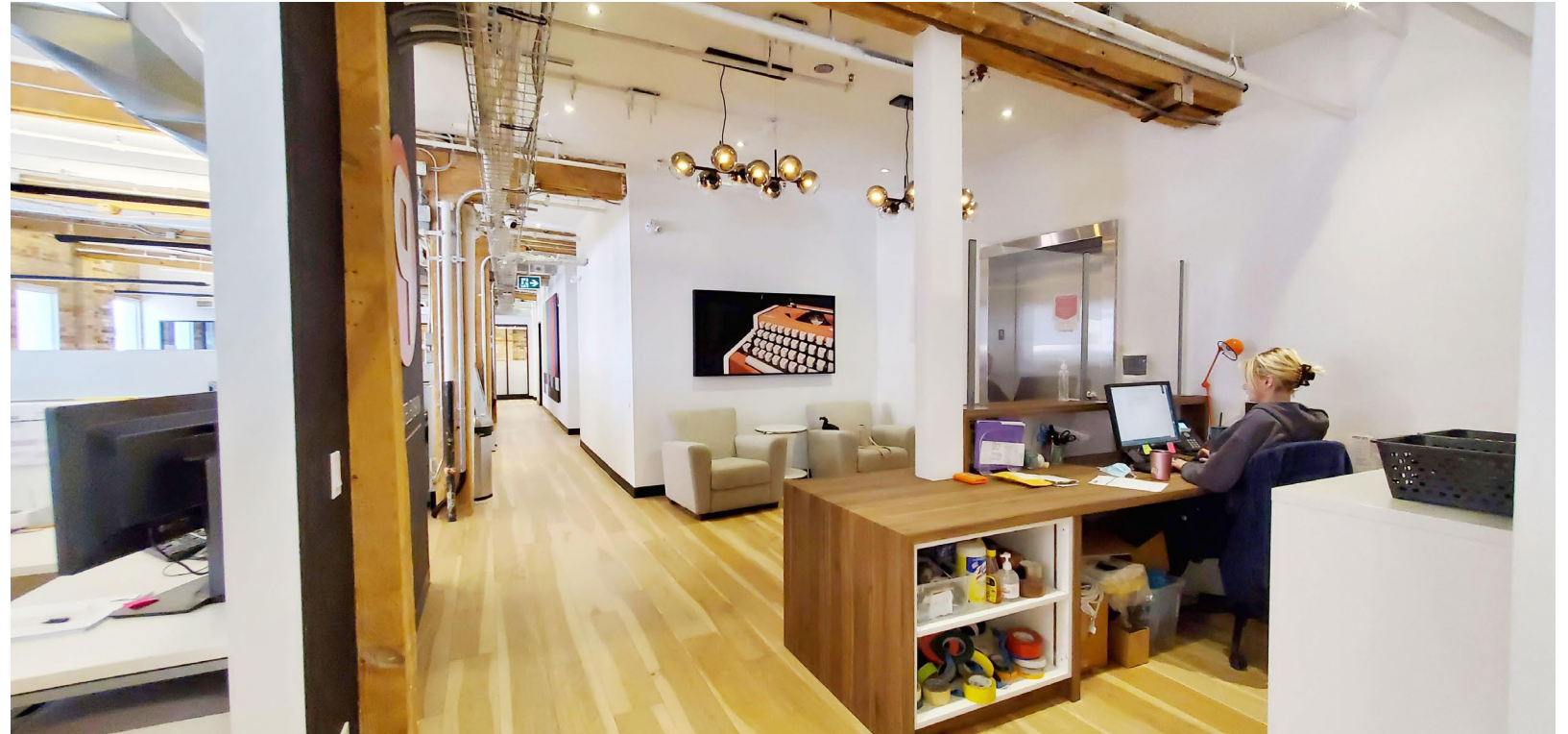
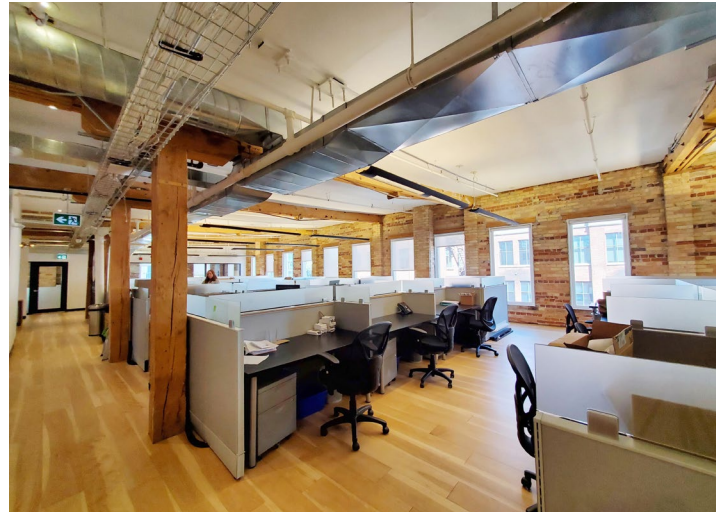
[Click here for Virtual Tour: 3rd Floor](#)



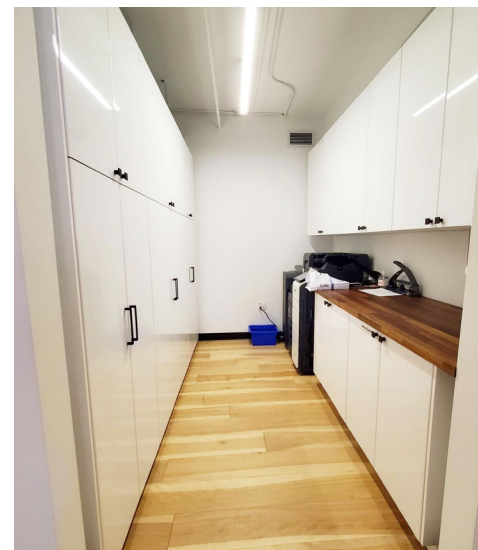
**Lennard:**



# 595 Adelaide Street E: 4th Floor



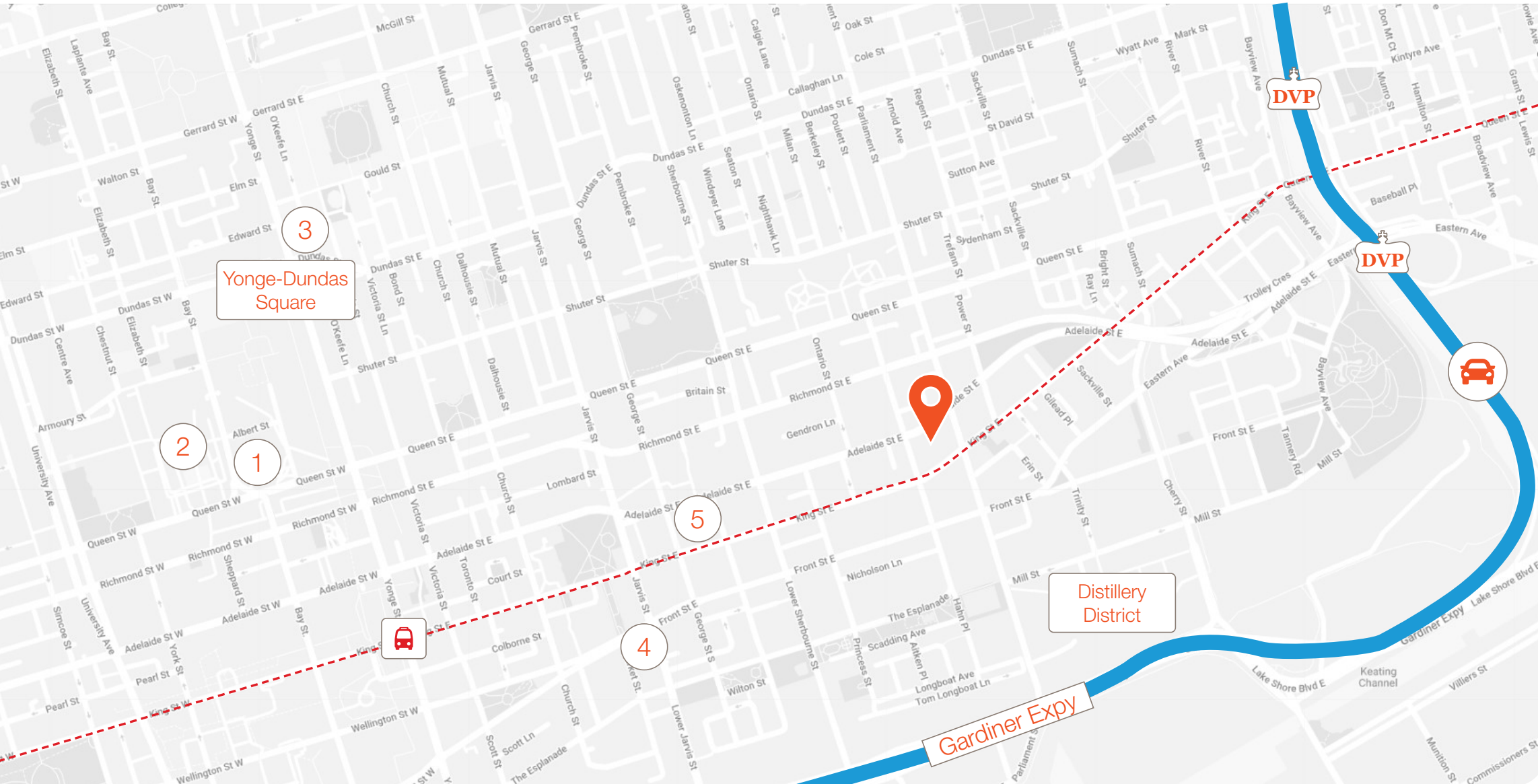
[Click here for Virtual Tour: 4th Floor](#)



Floor Plan



# 595 Adelaide Street E



 To Don Valley Parkway **2 Mins** • **1.5 km**

Distillery District **3 Mins** • **750 m**

Yonge-Dundas Square **8 Mins** • **1.8 km**

 King Subway Station (TTC Line 1) **7 Mins** • **1.3 km**

----- King Street Car Line (service every 5 minutes)

**1** Toronto Old City Hall

**2** Nathan Phillips Square

**3** Toronto Metropolitan University

**4** St. Lawrence Market

**5** George Brown College

 595 Adelaide Street E



**Lennard:**



## Lennard:

Joseph Wise\*, Senior Vice President  
416.649.5909  
[jwise@lennard.com](mailto:jwise@lennard.com)

200-55 University Avenue, Toronto  
416.649.5920  
[lennard.com](http://lennard.com)

\*Sales Representative \*\*Broker

Statements and information contained are based on the information furnished by principals and sources which we deem reliable but for which we can assume no responsibility. Lennard Commercial Realty, Brokerage.