

Opportunity

**CBRE**

Richmond, BC

# For Lease

# 12171 Horseshoe Way

Suite 110



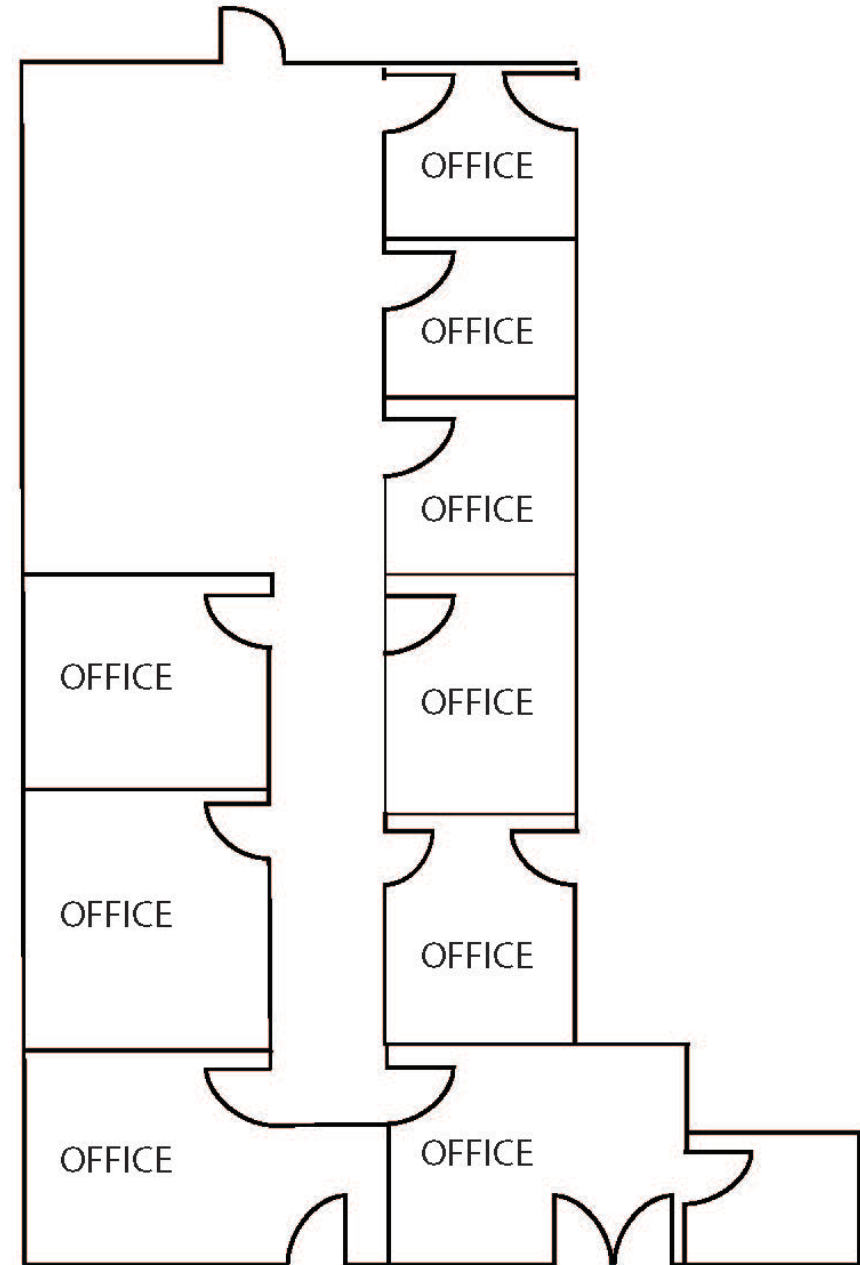
# Opportunity

## Property Details

Suite	110
Rentable Area	2,271 SF
Gross Rent	\$26.00 PSF
Available	30 Days Notice
Term	3 Year Minimum
Parking	6 Stalls @ No Cost
Signage	Negotiable
Zoning	<a href="#">IB1</a>



# Floor Plan



**2,271 SF**

Direct street front access into the premises -  
Bright corner unit improved with 7 private offices, meeting room, storage and open area. Premises also offers insuite washrooms.

This disclaimer shall apply to CBRE Limited, Real Estate Brokerage, and to all other divisions of the Corporation; to include all employees and independent contractors ("CBRE"). The information set out herein, including, without limitation, any projections, images, opinions, assumptions and estimates obtained from third parties (the "Information") has not been verified by CBRE, and CBRE does not represent, warrant or guarantee the accuracy, correctness and completeness of the Information. CBRE does not accept or assume any responsibility or liability, direct or consequential, for the Information or the recipient's reliance upon the Information. The recipient of the Information should take such steps as the recipient may deem necessary to verify the Information prior to placing any reliance upon the Information. The Information may change and any property described in the Information may be withdrawn from the market at any time without notice or obligation to the recipient from CBRE. CBRE and the CBRE logo are the service marks of CBRE Limited and/or its affiliated or related companies in other countries. All other marks displayed on this document are the property of their respective owners. All Rights Reserved. Mapping Sources: Canadian Mapping Services [canadamapping@cbre.com](mailto:canadamapping@cbre.com); DMTI Spatial, Environics Analytics, Microsoft Bing, Google Earth



# Location

Located within walking distance to Ironwood Plaza. 12171 Horseshoe Way offers convenient access to Hwy 99. The 405 bus stop is located immediately in front of the building.



Michael White

Vice President, Office Properties

[michael.rm.white@cbre.com](mailto:michael.rm.white@cbre.com)

604-662-5120

**CBRE**