



**AVISON
YOUNG**



FOR LEASE

3728 NORTH FRASER WAY

BURNABY, BC

Partnership. Performance.

Up to 11,762 SF Office and Flex Space Available in Marine Way Business Park Located in the Big Bend Area of Burnaby

Russ Bougie*, Principal
604.757.5115
russ.bougie@avisonyoung.com

*Russell Bougie Personal Real Estate Corporation

Kevin Kassautzki, Principal
604.646.8393
kevin.kassautzki@avisonyoung.com

Cally Zering, Client Services Coordinator
604.757.5116
cally.zering@avisonyoung.com

PROPERTY DETAILS

Available Space

Unit 107	2,882 sf
Unit 108-110	8,880 sf
Total	11,762 sf

Zoning

CD (Comprehensive Development) based upon M2/M5 (General & Light Industrial)

Asking Lease Rate

\$13.50 psf, per annum (net)

Additional Rent

\$4.64 (2019 estimate)

Availability

Immediate

Management

Professionally managed by Bastion Development Corp.



BUILDING FEATURES

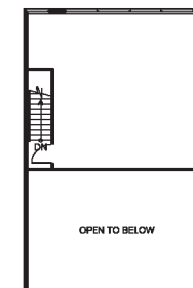
- Modern concept tilt-up building
- Grade level loading door per unit (12' x 12')
- 20' clear ceiling height in warehouse
- 3-phase power
- Efficient column spacing (21'3" length x 29'9" width)
- Significant floor load capacity
- Suspended forced air heaters
- Ceiling fans
- Ample parking

LOCATION

Marine Way Business Park is located on the south side of North Fraser Way and on the north side of the Fraser River, immediately south of the intersection at Marine Way and Boundary Road in the Big Bend industrial area of Burnaby. This area is geographically central to Metro Vancouver and provides convenient access to many major highways in the region including Highway 1, Highway 91, the South Fraser Perimeter Road (Highway 17) and Highway 1A.

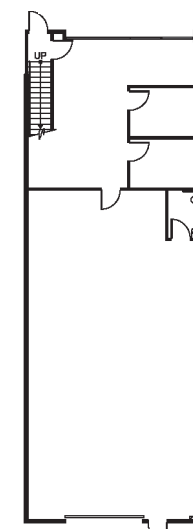
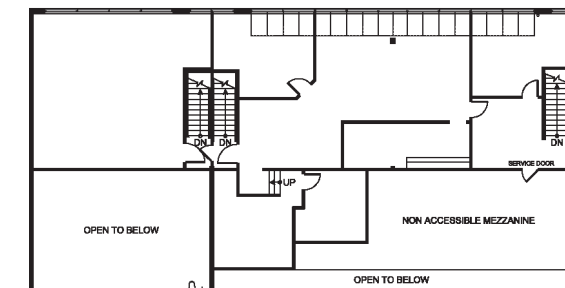
FLOOR PLAN

UNIT 107

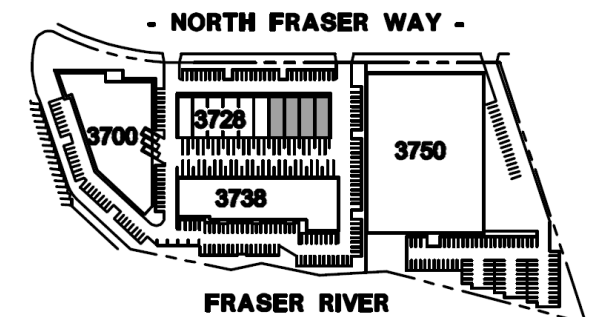
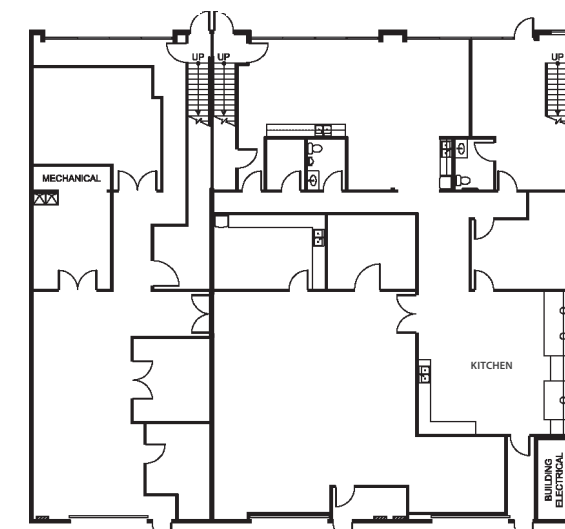


Mezzanine

UNIT 108-110



Main Floor



RENTABLE AREA

BUILDING B 3728 NORTH FRASER WAY

UNIT	SIZE
107	2,882 sf
108-110	8,880 sf



DRIVE TIMES

1
MIN

WESGROUP'S
RIVER DISTRICT

5
MIN

MARKET
CROSSING

8
MIN

METROTOWN

25
MIN

DOWNTOWN
VANCOUVER

RIVER DISTRICT
VANCOUVER

Contact us for
more information

• FOUNDRY •

WHERE WELLNESS TAKES SHAPE

A portion of the team's fees are donated to Foundry on an annual basis. Foundry is a provincial network of youth centres. For more information, visit foundrybc.ca

Avison Young
#2900 – 1055 W. Georgia Street
Box 11109 Royal Centre
Vancouver, BC V6E 3P3, Canada

avisonyoung.com



Platinum member

© 2019 Avison Young. All rights reserved. E. & O.E.: The information contained herein was obtained from sources that we deem reliable and, while thought to be correct, is not guaranteed by Avison Young Commercial Real Estate (B.C.) Inc.; DBA, Avison Young.

Russ Bougie*, Principal
604.757.5115
russ.bougie@avisonyoung.com

*Russell Bougie Personal Real Estate Corporation

Kevin Kassautzki, Principal
604.646.8393
kevin.kassautzki@avisonyoung.com

Cally Zering, Client Services Coordinator
604.757.5116
cally.zering@avisonyoung.com