

FOR LEASE

PROFESSIONAL OFFICE SPACE AT UMC CENTRE

14020 128 Avenue, Edmonton AB



HIGHLIGHTS

- Two main floor professional office spaces, 830 sq ft & 1,610 sq ft (+/-)
- High visibility location fronting St. Albert Trail just 0.5 km from Yellowhead Trail
- Professionally managed office building with free surface parking and available underground parking
- 1.5 km from Christy's Corner (Moxie's, Famoso, Mucho Burrito, etc.)
- Starting at \$1,657/mo +/- gross (estimate based on basic rent and additional rent)

CONTACT

THOMAS BRAUN MBA
Partner, Associate
T 780.423.7575 C 780.690.8353
thomas@royalparkrealty.com



**ROYAL PARK
REALTY™**

T 780.448.0800 F 780.426.3007
#201, 9038 51 Avenue NW Edmonton, AB T6E 5X4

royalparkrealty.com

PHOTOS



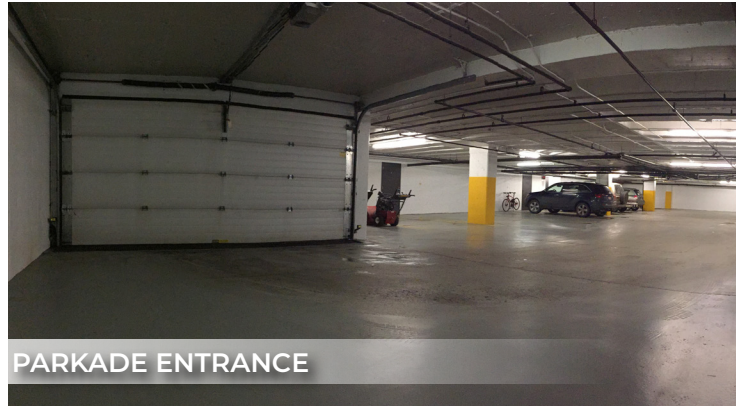
WEST SIDE BUILDING



FRONT ENTRANCE



WALL OF WINDOWS




PARKADE ENTRANCE



FRONT ENTRANCE



PEDESTAL SIGN NEGOTIABLE

 **ROYAL PARK REALTY™**

T 780.448.0800 F 780.426.3007
#201, 9038 51 Avenue NW Edmonton, AB T6E 5X4
royalparkrealty.com

PROPERTY DETAILS

ADDRESS	14020 128 Avenue, Edmonton AB
LEGAL DESCRIPTION	Plan: 7620006 Block: 2 Lot: 11
ZONING	IB - Business Industrial
BUILT	1970's +/-
CONSTRUCTION TYPE	Concrete and steel beam
BUILDING SIZE	19,864 sq ft +/-
SPACE AVAILABLE	830 or 1,610 sq ft +/- main floor office
SITE IMPROVEMENTS	Professional landscaping, asphalt parking (surface), concrete underground parking
PARKING	Surface: 2.7 stalls/1,000 sq ft Underground: 2 stalls/1,000 sq ft at \$75/stall/month
POSSESSION	Immediate
SECURITY	FOB activated door and onsite security cameras
INTERNET	Fibre in the building



OFFICE DETAILS

CEILING HEIGHT	9' clear (TBC)
HEATING & COOLING	Boiler and air conditioning
LIGHTING	Fluorescent
LAYOUT	Main floor has reception, 2 offices, bullpen, kitchenette and a wall of windows



- On site security camera
- Fob activated door
- Professional landscaping
- Asphalt Surface
- Concrete underground parking

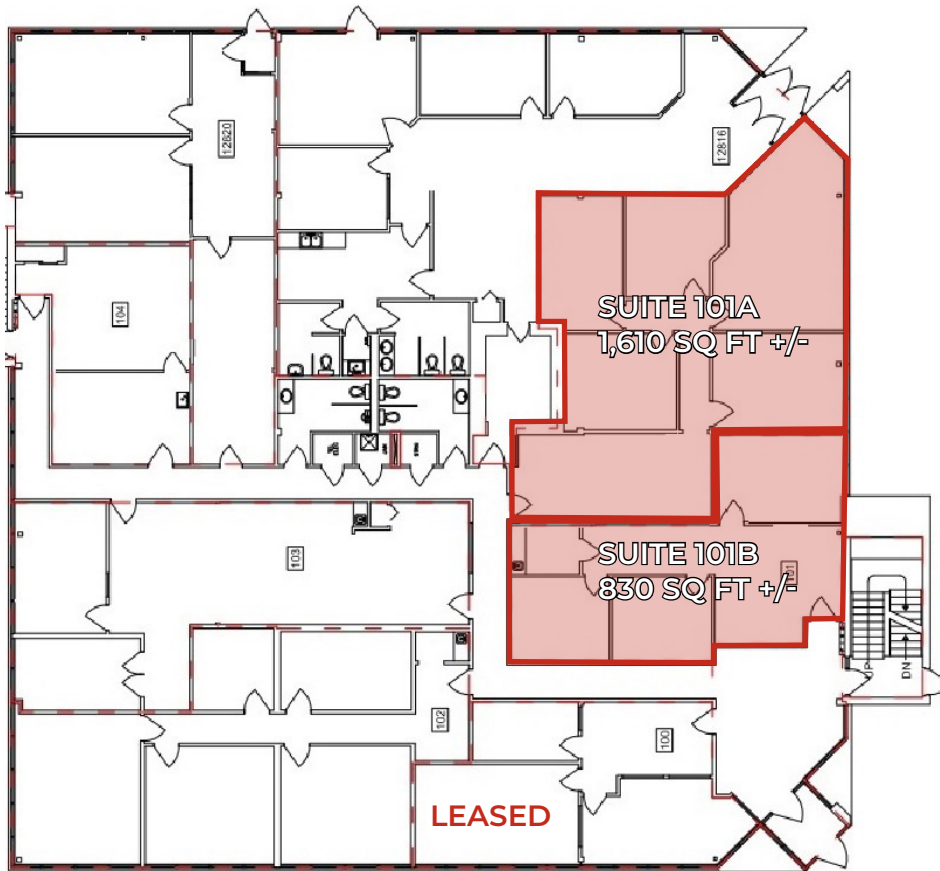


ROYAL PARK
REALTY™

T 780.448.0800 F 780.426.3007
#201, 9038 51 Avenue NW Edmonton, AB T6E 5X4

royalparkrealty.com

SUITE 101




FINANCIALS

SUITE 100	7 LEASED	
SUITE 101A	1,610 sq ft +/-	\$3,213.29/mo +/-
SUITE 101B	830 sq ft +/-	\$1,656.54/mo +/-

** Values are monthly gross rents based off annual basic and additional rent and subject to change without notice.**



Floor plans provided for reference only, actual may vary.

 **ROYAL PARK REALTY™**

T 780.448.0800 F 780.426.3007
#201, 9038 51 Avenue NW Edmonton, AB T6E 5X4
royalparkrealty.com

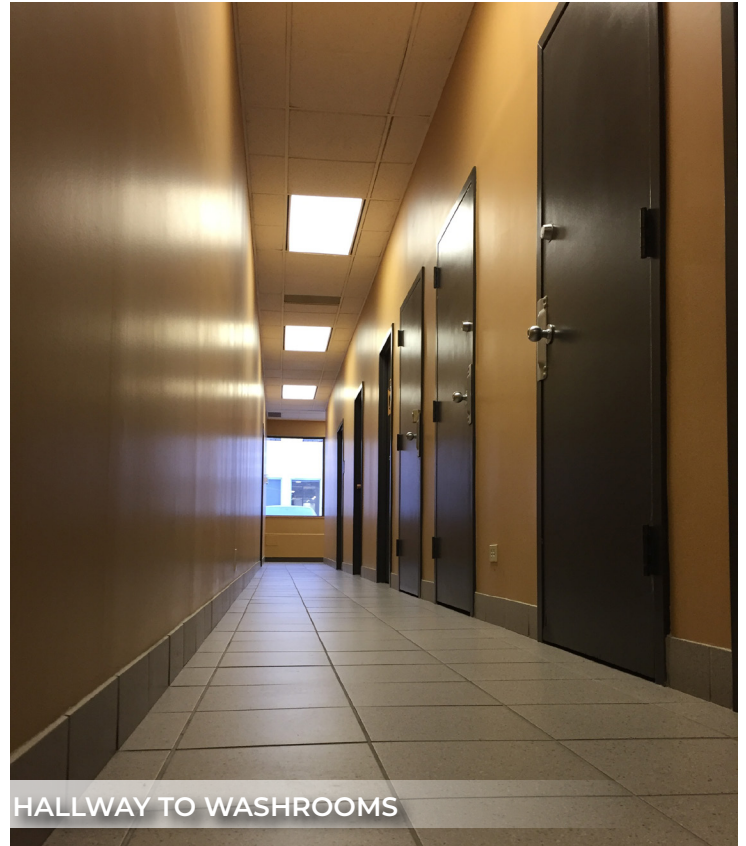
The information contained herein is believed to be correct, however does not form part of any future contract. The offering may be withdrawn at any time without notice or cause.

PHOTOS



SURFACE PARKING 2.7/1,000 SQ FT

- Large offices
- Walls of windows
- New flooring
- New paint



HALLWAY TO WASHROOMS



STAIRWELL TO PARKADE



REAR ACCESS WITH CAMERAS



UNDERGROUND PARKING



ROYAL PARK
REALTY™

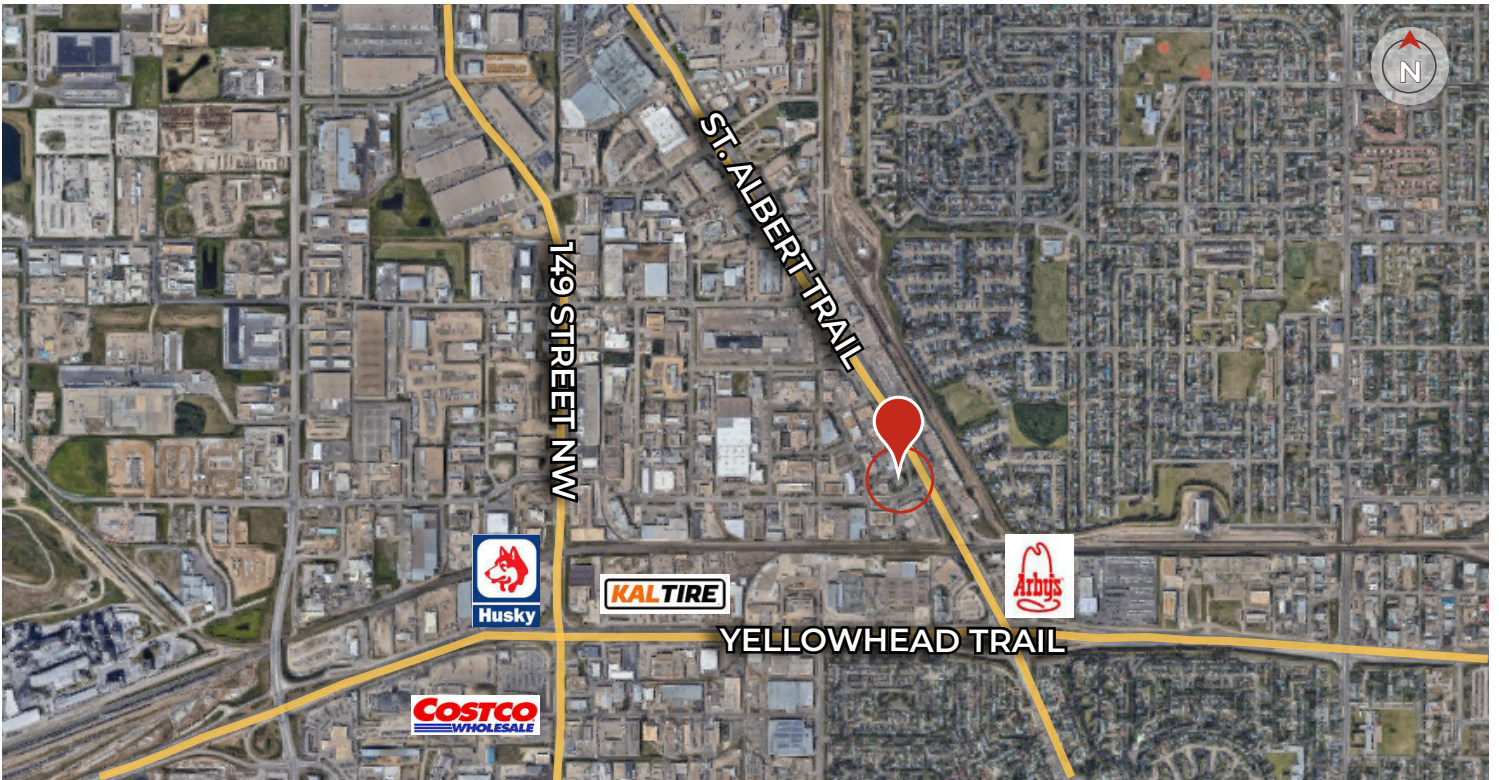
T 780.448.0800 F 780.426.3007
#201, 9038 51 Avenue NW Edmonton, AB T6E 5X4

royalparkrealty.com

REGIONAL MAP



LOCAL MAP

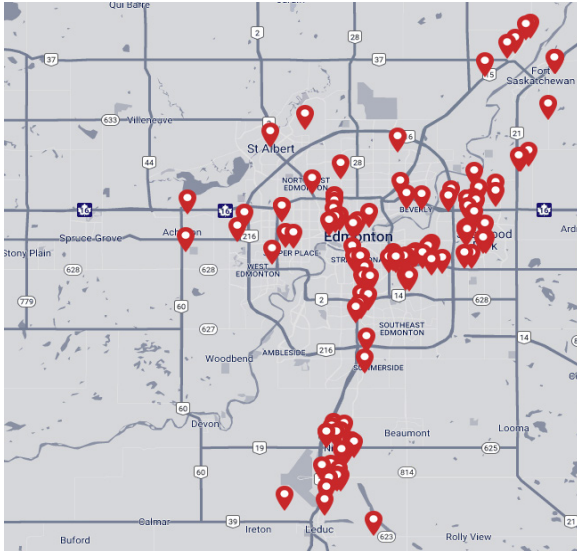


ROYAL PARK
REALTY™

T 780.448.0800 F 780.426.3007
#201, 9038 51 Avenue NW Edmonton, AB T6E 5X4

royalparkrealty.com

ABOUT ROYAL PARK REALTY



- We've been in business since 1975
- We service the greater Edmonton area
- Two offices - Edmonton and Nisku
- Over 10 professional associates - representing a diverse cross section of market expertise
- Commercial real estate only. We have tremendous experience with industrial, land, office and retail real estate
- We're in business for the long term - our brand and reputation are paramount to us and we serve our clients accordingly

THOMAS BRAUN Partner/Associate, MBA - BIO



Thomas Braun, Partner/Associate, focuses on the sales, leasing, and build-to-suit of industrial properties in the greater Edmonton area.

With nearly two decades in the oil and gas, mining, forestry and real estate sectors, Thomas knows what truly drives successful real estate transactions: developing strong client relationships, providing outstanding customer service, ensuring meticulous attention to detail and guaranteeing a high-level of integrity – all of which serve his clients well.

Thomas' goal is to be a trusted advisor to his clients and to use his creative negotiating and marketing skills to their advantage. His practical business and investment knowledge led to Thomas pioneering a "Massey-like" Offer to Purchase/Lease that provides savvy financial protection for his clients.

Thomas is a lifelong Edmontonian who holds a Masters in Business Administration from the University of Alberta. When not working on client deals, you can find him cycling and skiing with his wife and daughters, reading about behavioral economics, or playing hockey or windsurfing.



**ROYAL PARK
REALTY™**

T 780.448.0800 F 780.426.3007
#201, 9038 51 Avenue NW Edmonton, AB T6E 5X4

royalparkrealty.com