

35 KING

— WATERLOO —

A HISTORIC LANDMARK IN WATERLOO - NOW AVAILABLE



35 KING

— WATERLOO —

A HISTORIC LANDMARK IN WATERLOO - NOW AVAILABLE



Rendering is artist concept. Subject to change. E & O E.

Rendering is artist concept. Subject to change. E & O E.

COUPAL MARKOU COMMERCIAL REAL ESTATE

150 King Street South 519 742 7000 → Office
Waterloo, Ontario N2J 1P6 519 742 7070 → Fax

Matthew Dickson

Sales Representative
519 742 7000 → x104
matt@coupalmarkou.com

Michael Conrad

Sales Representative
519 742 7000 → x105
mike@coupalmarkou.com



Commercial Real Estate Inc., Brokerage

www.coupalmarkou.com



Commercial Real Estate Inc., Brokerage

FOR LEASE: OVER 27,000 SQUARE FEET

LANDMARK OFFICE SPACE

PREMIUM WATERLOO LOCATION IN HISTORIC POST OFFICE BUILDING



RETAIL NET LEASE FROM: **\$28.00** PER SQUARE FOOT
 OFFICE NET LEASE FROM: **\$25.00** PER SQUARE FOOT

35 KING STREET NORTH

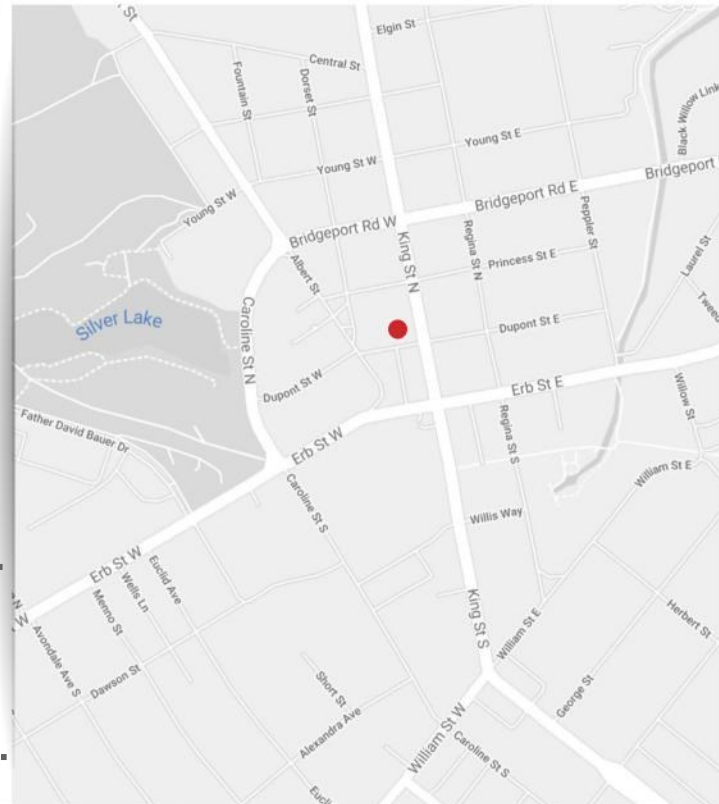
The prominent clock tower of the Waterloo Post Office commands the streetscape and serves as a landmark feature at the corner of King and Dupont Streets.

The character defining features of the building have been maintained including include rounded arches and rusticated sandstone.

Now is your time to shine at this one-of-a-kind office opportunity in the heart of UpTown Waterloo.

PROPERTY FEATURES

- Heart of Uptown Waterloo with immediate access to all major amenities
- One of a kind office environment meticulously restored and renovated to suit modern business needs
- Potential for sidewalk patio
- Brick and beam construction
- Early 2022 availability
- Historically registered building
- Close proximity to LRT Stop
- Many amenities nearby including banks, restaurants, grocery, personal care, shopping and more
- Neighboring multiple walking and biking trails and transit routes



AVAILABILITY

13,211 SQ. FT.

POSSESSION

Q3 2022

LEASE RATE

RETAIL PRICED FROM **\$28.00/SQ.FT.NET.**

OFFICE PRICED FROM **\$25.00/SQ.FT.NET.**

ADDITIONAL RENT

\$9.12-\$12.00/ SQ.FT. PLUS UTILITIES

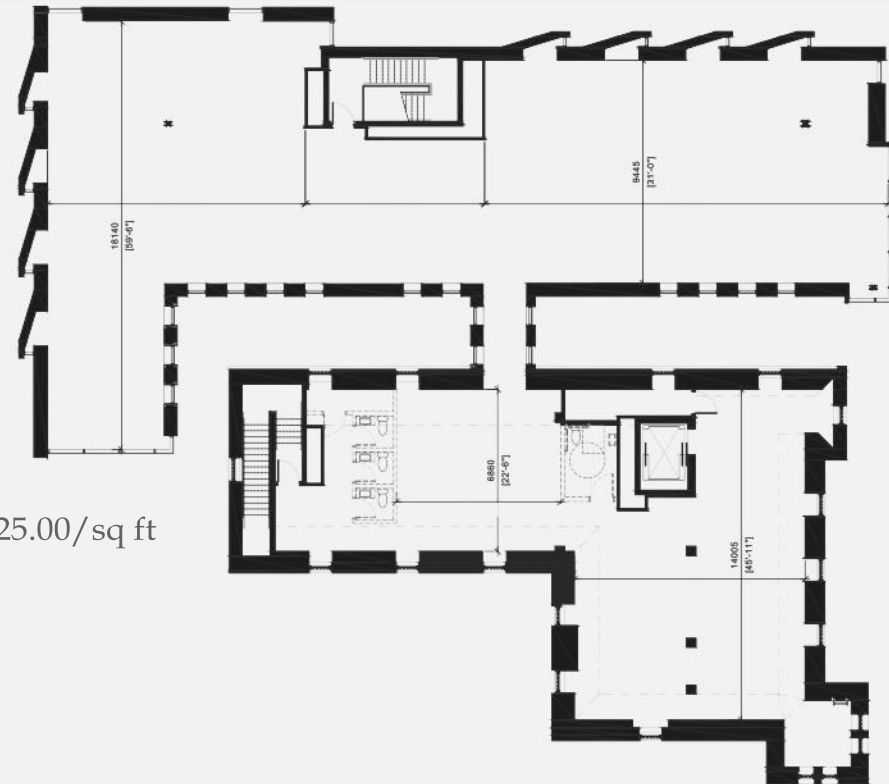
UNIT 201

OFFICE SPACE / 10,524 SQUARE FEET / SECOND FLOOR



UNIT 301

OFFICE SPACE / 9,133 SQUARE FEET / THIRD FLOOR



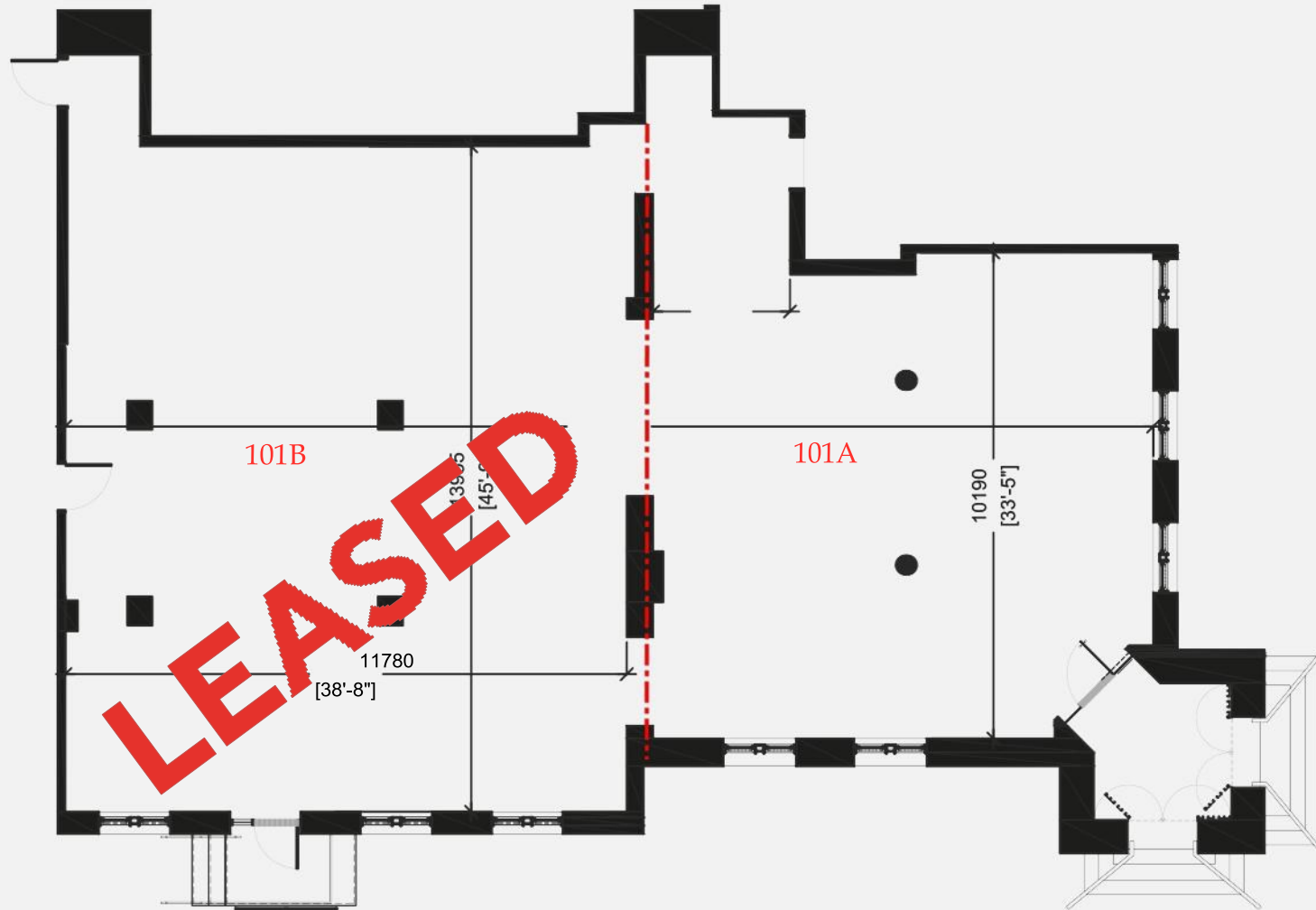
301
9,133 sq ft - \$25.00/sq ft

Coupal Markou Commercial Real Estate Inc., Brokerage, to include all employees and independent contractors. The information set out herein is for advertising purposes, and any images, assumptions, estimates and property details have been obtained from sources deemed to be reliable. No warrant or representation is made as to its accuracy, correctness and completeness of the information, being subject to errors, omissions, conditions, prior sale or lease, withdrawal or other changes without notice. The recipient of the information should conduct its own inquiries and investigations prior to placing any reliance upon the information. MLS/EXCLUSIVE.

UNIT 101

RETAIL SPACE / 3,900 SQUARE FEET / SOUTH UNIT

101A
2,400 sq ft - \$32.00/sq ft
101B
LEASED



Floorplans are subject to change. E. & O. E.

UNIT 103

RETAIL SPACE / 1,700 SQUARE FEET / NORTH UNIT



UNIT 102

RETAIL SPACE / 1,700 SQUARE FEET / CENTER UNIT



Floorplans are subject to change. E. & O. E.

Coupal Markou Commercial Real Estate Inc., Brokerage, to include all employees and independent contractors. The information set out herein is for advertising purposes, and any images, assumptions, estimates and property details have been obtained from sources deemed to be reliable. No warrant or representation is made as to its accuracy, correctness and completeness of the information, being subject to errors, omissions, conditions, prior sale or lease, withdrawal or other changes without notice. The recipient of the information should conduct its own inquiries and investigations prior to placing any reliance upon the information. MLS/EXCLUSIVE.

Coupal Markou Commercial Real Estate Inc., Brokerage, to include all employees and independent contractors. The information set out herein is for advertising purposes, and any images, assumptions, estimates and property details have been obtained from sources deemed to be reliable. No warrant or representation is made as to its accuracy, correctness and completeness of the information, being subject to errors, omissions, conditions, prior sale or lease, withdrawal or other changes without notice. The recipient of the information should conduct its own inquiries and investigations prior to placing any reliance upon the information. MLS/EXCLUSIVE.

35 KING

— WATERLOO —

UPTOWN WATERLOO
LANDMARK OFFICE & RETAIL
SPACE



Rendering is artist concept. Subject to change. E & O E.