

New to Market



Stand-alone character building

Location Overview

- 15,044 sq feet over three levels
- Large exclusive parking lot - nearly 2 stalls per 1,000 sq feet leased
- Exterior signage opportunity with exposure along 108 Street

Get more information

Cory Wosnack

Principal & Managing Director
+1 780 429 7556
cory.wosnack@avisonyoung.com

Tori Sara

Administrative Coordinator
+1 780 429 7561
tori.sara@avisonyoung.com

10111 - 104 Avenue
Suite 2100
Edmonton, AB T5J 0J4
+1 780 428 7850



Property Summary

Leasable Area:	15,044 sf over 3 levels
Floor Plate:	Approx. 5000 sq feet
Base Rent:	\$16.00 psf
Additional Rent (2021):	\$12.69 psf (janitorial included)
Tenant Inducement:	Available dependent on term
Parking:	26 surface parking stalls \$150 per stall/month



Fully barrier-free with accessible washrooms & lift



Exclusive surface parking lot



Abundance of neighbourhood amenities

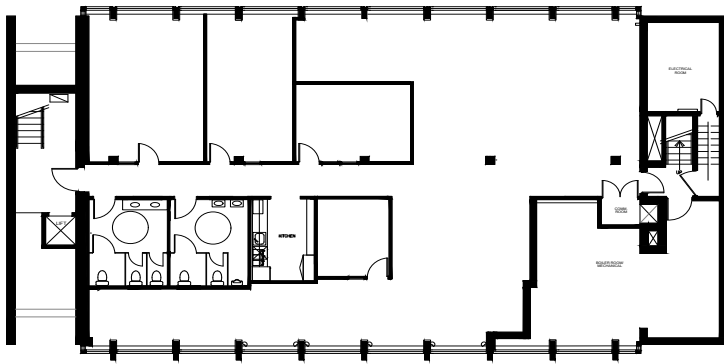


Highly accessible via road, bicycle & public transit

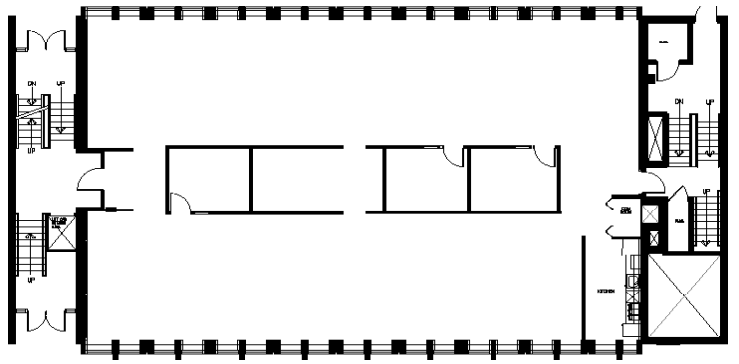
 [Take a Virtual Tour](#)

Office for Lease

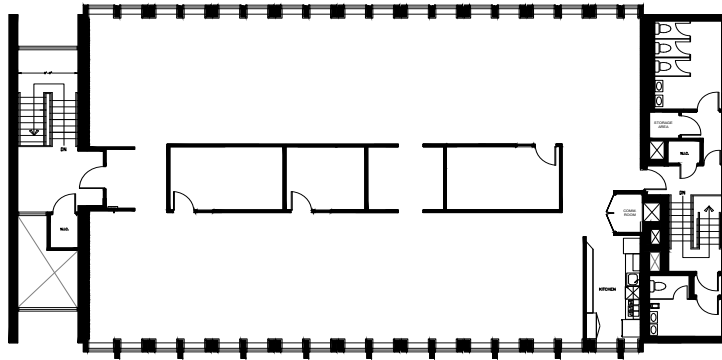
10020 108 Street, Edmonton, AB



Lower Level



Second Floor

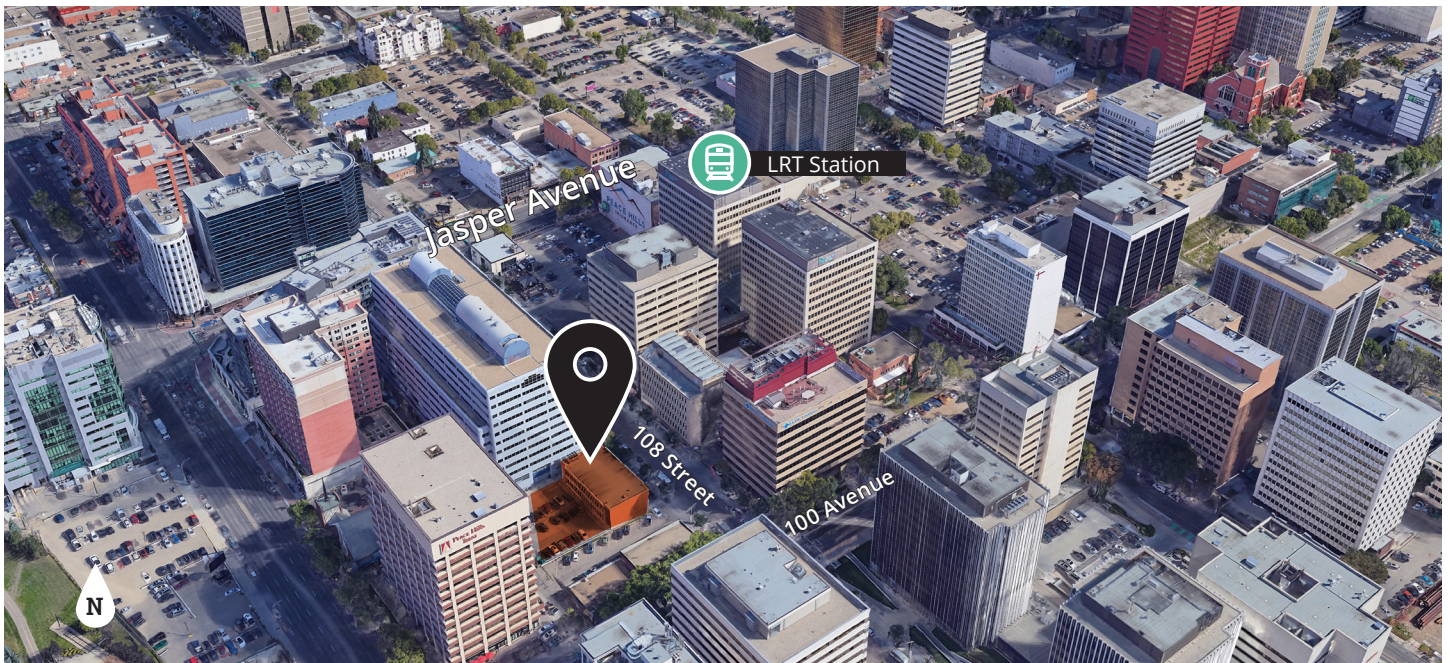


Third Floor





Location Map



Cory Wosnack
Principal & Managing Director
+1 780 429 7556
cory.wosnack@avisonyoung.com

Tori Sara
Administrative Coordinator
+1 780 429 7561
tori.sara@avisonyoung.com

