

FOR LEASE

MILLENNIUM

CENTRAL LONSDALE

131 East 13th Street, North Vancouver, BC

31,284 sf of office space in North Vancouver's newest mixed-use development



Terry Thies*, Principal
604 646 8398
terry.thies@avisonyoung.com
**Terry Thies Personal Real Estate Corp.*

Ian Whitchelo*, Principal
604 647 5095
ian.whitchelo@avisonyoung.com
**Ian Whitchelo Personal Real Estate Corporation*

**AVISON
YOUNG**



NORTH SHORE CLASS A OFFICE



PROPERTY DETAILS

UNIT SIZES

Second Floor

Units from 1,106 sf to 11,520 sf

Third Floor

Units from 1,212 sf to 3,196 sf

ADDRESS

131 East 13th Street
North Vancouver

AVAILABILITY

Estimated at Q3 2024

ASKING LEASE RATE NET RENT

Contact Terry Thies and
Ian Whitchelo

ADDITIONAL RENT (2024 ESTIMATE)

\$17.00 psf per annum

ZONING

CD-004* - This Comprehensive Development Zone permits a wide range of retail and office uses.

**Please contact listing team for a copy of the complete zoning bylaw.*

PARKING










Secure underground parking on two levels for commercial tenants and visitors, accessed from the lane to the south. Monthly and hourly parking rates will apply.

OPPORTUNITY

Millennium Central Lonsdale presents commercial leasing opportunities in the heart of Central Lonsdale, the North Shore's premier business district.

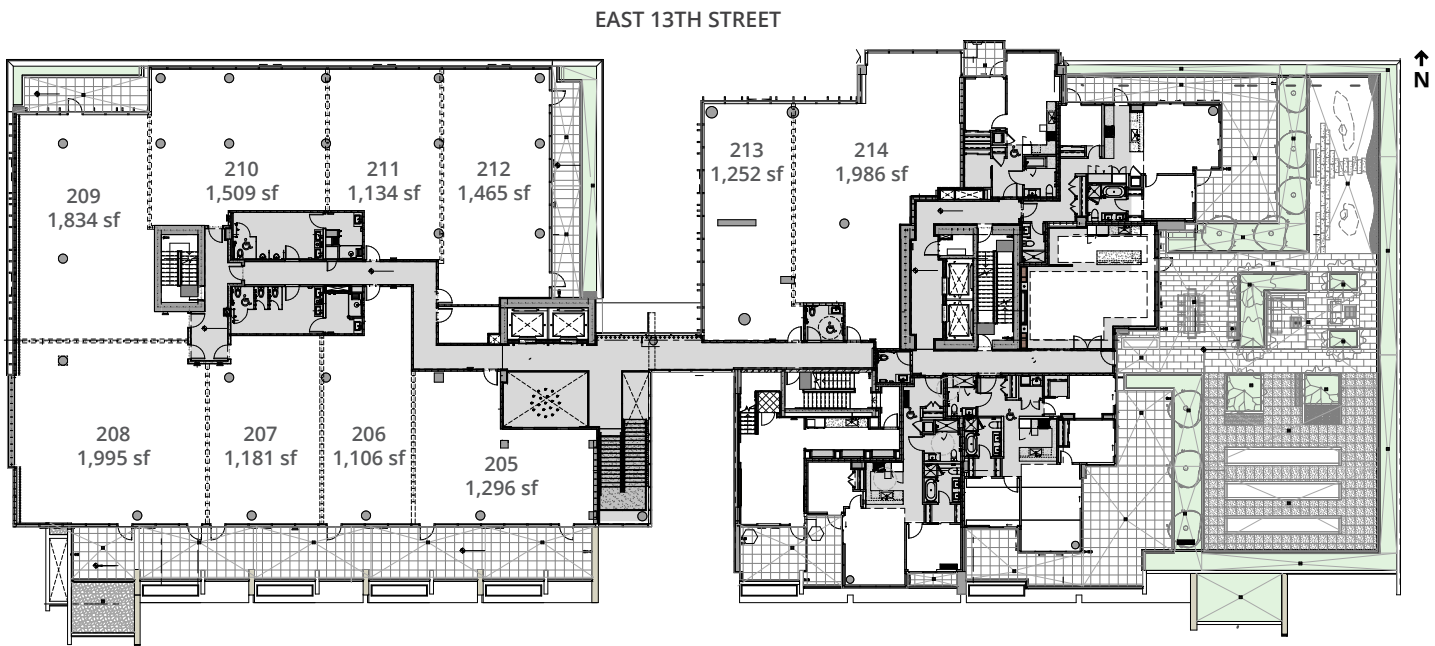
This new development by Millennium offers two floors of exciting new office space which can be demised to accommodate a variety of tenant sizes, plus a main floor retail opportunity with premium exposure to the busy 13th Street traffic. This high-quality mixed-use development is comprised of an 18-storey residential tower, premium office and ground floor retail units. The development features an attractive pedestrian "mews" separating the east and west portions of the development. The development is located in the designated High Street of Central Lonsdale, close to Lions Gate Hospital, City Hall, and a variety of retail and professional businesses.



-  Excellent location in North Vancouver's Central Lonsdale commercial hub
-  Tenant amenities include end-of-trip facilities and secure bike storage
-  Well-serviced by public transportation
-  Advanced air handling and filtration systems providing quality air exchanges throughout the day
-  Underground parking for tenants and customers
-  Some units offer views to the south towards downtown Vancouver
-  Multiple office units with sizes to accommodate almost any tenant requirement
-  Perfect for medical & dental uses at North Vancouver's "health care hub"
-  Bright open areas with high-ceilings, and some units with access to private exterior decks

LOCATION

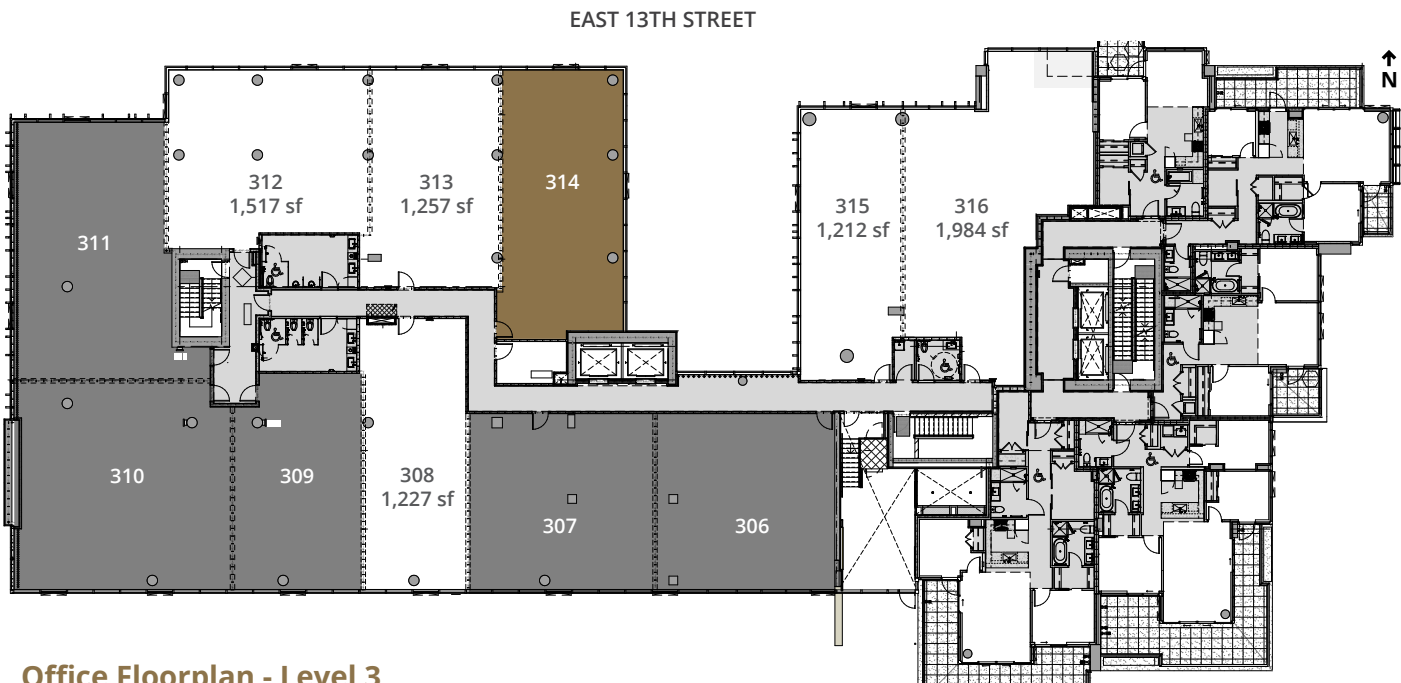
Millennium Central Lonsdale at 131 East 13th Street is located across from Whole Foods Market adjacent to Lonsdale Avenue in North Vancouver's Central Lonsdale area, fronting the busy 13th Street traffic corridor. This location, in the regional city centre benefits from proximity to many community amenities including Lions Gate Hospital, North Vancouver City Library, and North Vancouver City Hall. The Upper Levels Highway is only 4 minutes away and Downtown Vancouver is accessible via the SeaBus at Lonsdale Quay in 20 minutes. Central Lonsdale has become a focal point of North Vancouver and is home to major financial institutions, abundant restaurants and cafes, fitness facilities, a variety of retail shops, and numerous medical, dental, and other professional office services.



Office Floorplan - Level 2

*Units may be combined

Under contract Leased



Office Floorplan - Level 3

*Units may be combined

Under contract Leased

AMENITIES

- BANK**
- 1. RBC Royal Bank
 - 2. CIBC
 - 3. HSBC
 - 4. BMO
 - 5. TD Canada Trust
 - 6. Scotiabank
 - 7. BlueShore Financial

- CAFÉS**
- 8. Chiptole
 - 9. JJ Bean Coffee Roasters
 - 10. Tim Hortons
 - 11. Blenz
 - 12. Take Five Café

- RESTAURANTS**
- 13. Browns Socialhouse
 - 14. Jack Lonsdale's Public House
 - 15. Zeitoon Restaurant
 - 16. Yaas Restaurant
 - 17. Bridge Deck Tasting Room
 - 18. Bravo Cucina

- GROCERY / PHARMACY**
- 19. London Drugs
 - 20. Loblaws City Market
 - 21. Shoppers Drug Mart
 - 22. Whole Foods
 - 23. Ayoub's Dried Fruits and Nuts

- FITNESS**
- 24. Oxygen Yoga & Fitness
 - 25. Steve Nash Fitness World
 - 26. Club 16 Trevor Linden Fitness



88

VERY WALKABLE

Most errands can be accomplished on foot

TO LONSDALE QUAY

6 minute drive

TO DOWNTOWN VANCOUVER

20 minute SeaBus ride

86

VERY BIKABLE

Biking is convenient for most trips

TO LIONS GATE BRIDGE

10 minute drive

TO TRANS-CANADA HIGHWAY 1

4 minute drive



For more information, please contact

Terry Thies*, Principal
604 646 8398
terry.thies@avisonyoung.com
**Terry Thies Personal Real Estate Corp.*

Ian Whitchelo*, Principal
604 647 5095
ian.whitchelo@avisonyoung.com
**Ian Whitchelo Personal Real Estate Corporation*

avisonyoung.com

© 2023 Avison Young. All rights reserved.
E. & O.E.: The information contained herein was obtained from sources that we deem reliable and, while thought to be correct, is not guaranteed by Avison Young Commercial Real Estate Services, LP ("Avison Young")



Platinum member