

FOR LEASE

KLONDIKE CENTRE

NAICommercial



11050 - 156 STREET | EDMONTON, AB | SECOND FLOOR OFFICE

PROPERTY DESCRIPTION

- Parking ratio of 3.6 stalls per 1,000 sq.ft. usable area
- Conveniently located in a mix of commercial and residential areas
- Second floor walk up office space on a visible corner intersection with exposure to 111 Avenue
- Extra storage space available on site
- Ample surface parking
- Potential for pylon signage
- Professionally managed building

CHAD SNOW

Broker, President
780 436 7410
csnow@naiedmonton.com

KARI MARTIN

Senior Associate
780 435 5301
kmartin@naiedmonton.com



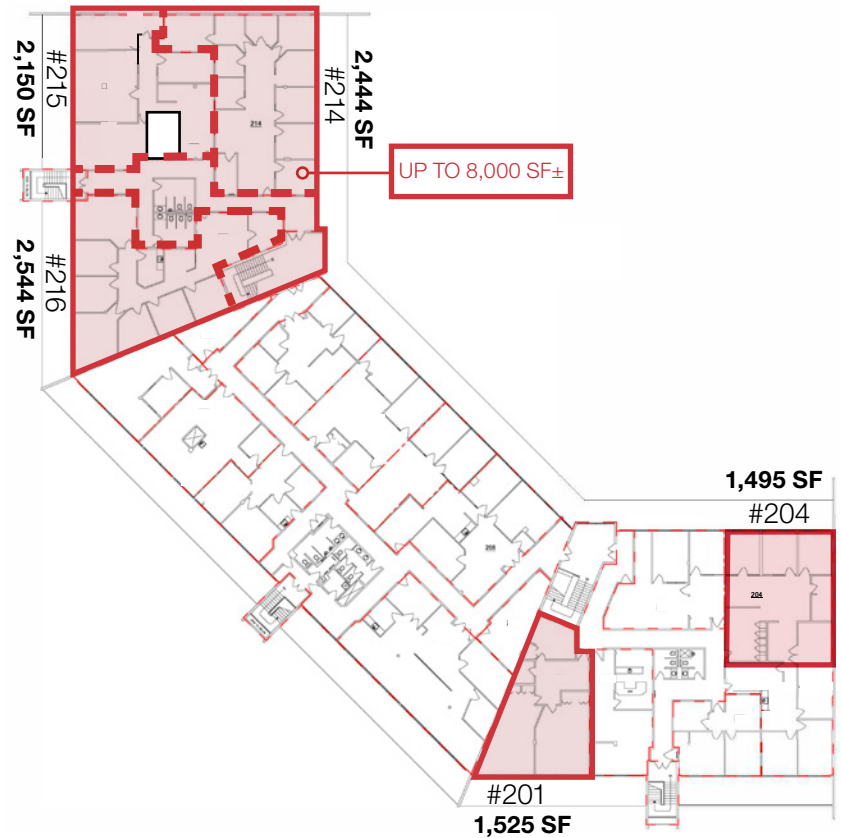
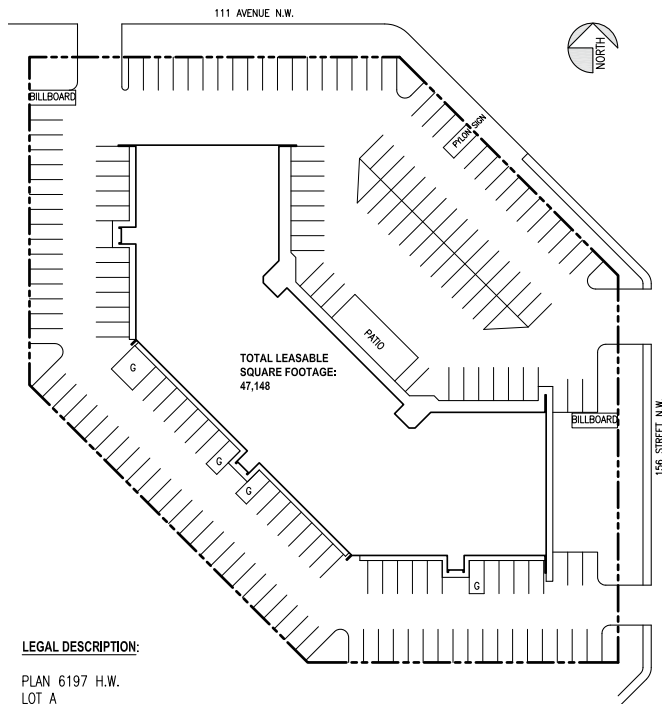
NAI COMMERCIAL REAL ESTATE INC.
4601 99 STREET NW, EDMONTON AB, T6E 4Y1



780 436 7410



NAIEDMONTON.COM



ADDITIONAL INFORMATION

AREA AVAILABLE	From 1,500 sq.ft.± up to 7,138 sq.ft.±
LEGAL DESCRIPTION	Plan 6197HW, Lot A
ZONING	General Commercial (CG)
AVAILABLE	Immediately
LEASE TERM	3 - 10 years
NET LEASE RATE	Starting at \$6.00/sq.ft./annum
OPERATING COSTS	\$9.50/sq.ft./annum (2024/25 estimate) Includes property taxes, building insurance, common area maintenance, utilities (power, gas, water) and management fees.

*Variety of configuration and office layouts available. See lister for details.



CHAD SNOW

Broker, President
780 436 7410
csnow@naiedmonton.com

KARI MARTIN

Senior Associate
780 435 5301
kmartin@naiedmonton.com



NAI COMMERCIAL REAL ESTATE INC.
4601 99 STREET NW, EDMONTON AB, T6E 4Y1



780 436 7410



NAIEDMONTON.COM

5781 CS25