



For Lease

Edmonton, AB

# KNELSEN OFFICE

11211 Winterburn Road NW

**Available Space:**

5,000 SF

**Gross Lease Rate:**

\$13.50 PSF

Fully furnished office in  
Northwest Edmonton

For more info Contact:

**Darryl McGavigan**

Senior Vice President

780 328 0064

Darryl.McGavigan@jll.com

**Chad Boddez**

Senior Vice President

780 328 2567

Chad.Boddez@jll.com



---

**Civic Address** 11211 Winterburn Road NW, Edmonton

---

**Legal Description** Plan: 843RS; Lot: H

---

**Available Area** 5,000 SF

---

**Lease Rate** \$13.50 PSF Gross

---

**Zoning** IM - Medium Industrial

---

**Year Built** 1991

---

**Lighting** T5

---

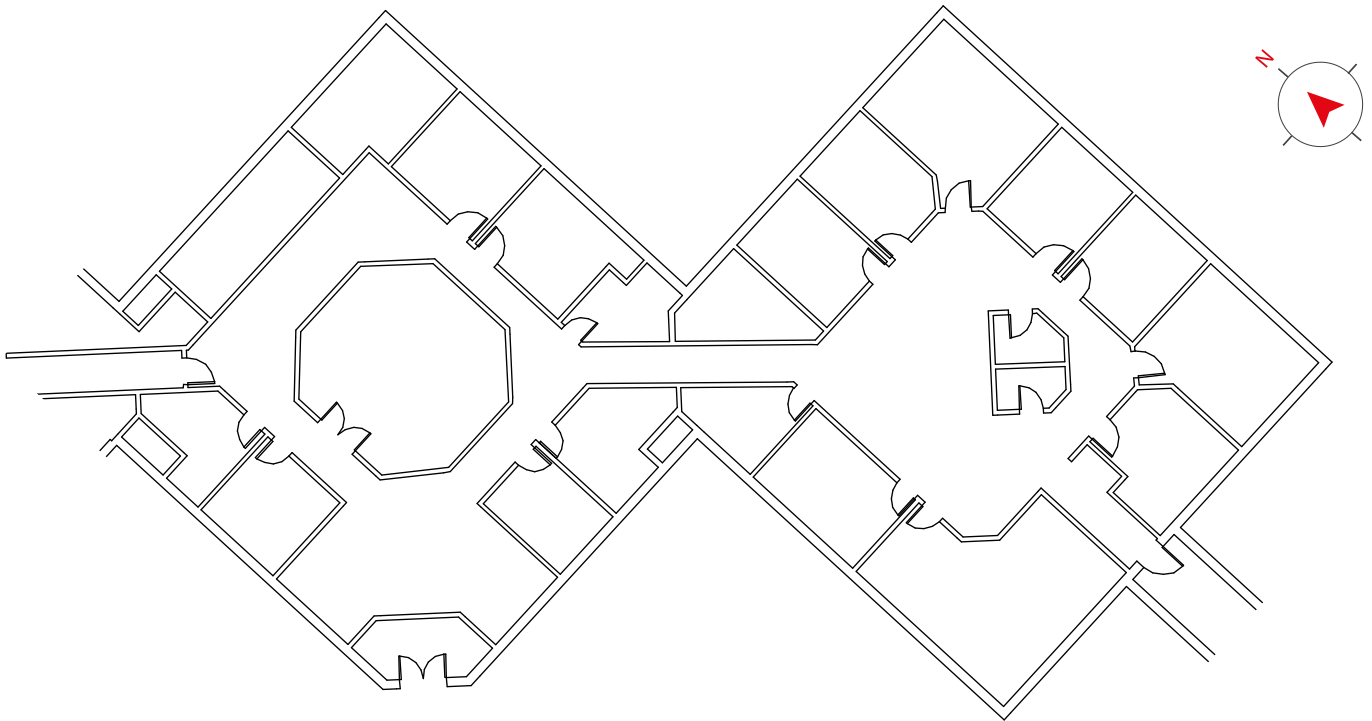
**Other Features** Fully developed move-in ready office space  
Furnishing negotiable  
Exclusive, separate entrance  
Signage opportunity  
Sufficient parking at no additional cost  
Competitive rates

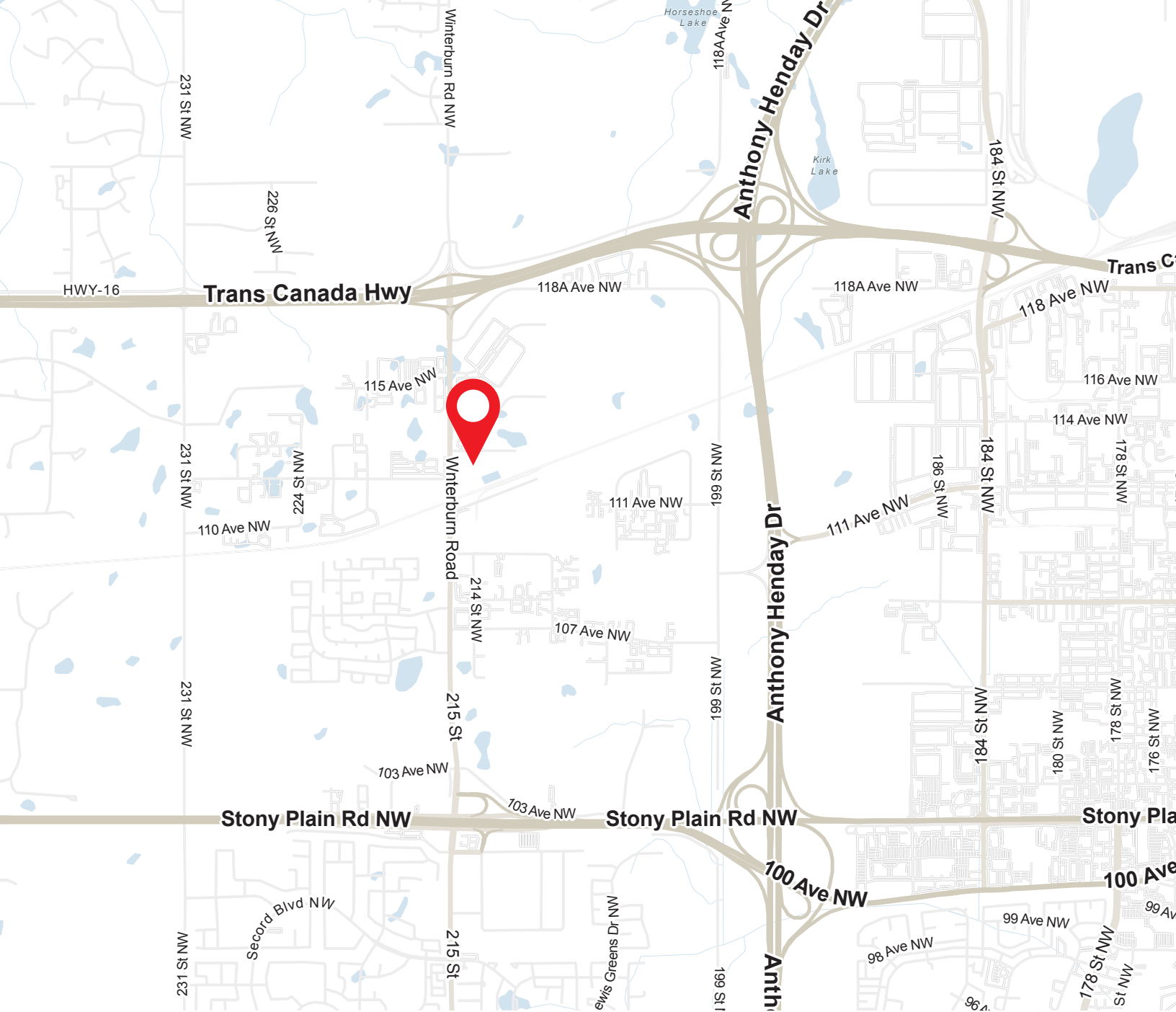
---





## Floor Plans





For more information or to view, please contact:

**Darryl McGavigan**  
Senior Vice President  
780 328 0064  
Darryl.McGavigan@jll.com

**Chad Boddez**  
Senior Vice President  
780 328 2567  
Chad.Boddez@jll.com

**JLL Edmonton Industrial**  
780 328 2550  
2101, 10088 102 Avenue NW  
Edmonton, Alberta T5J 2Z1

DISCLAIMER: Although information has been obtained from sources deemed reliable, neither Owner nor JLL makes any guarantees, warranties or representations, express or implied, as to the completeness or accuracy as to the information contained herein. Any projections, opinions, assumptions or estimates used are for example only. There may be differences between projected and actual results, and those differences may be material. The Property may be withdrawn without notice. Neither Owner nor JLL accepts any liability for any loss or damage suffered by any party resulting from reliance on this information. If the recipient of this information has signed a confidentiality agreement regarding this matter, this information is subject to the terms of that agreement. ©2022. Jones Lang LaSalle IP, Inc. All rights reserved.

