



For Lease

Papaschase Business Park

9703-9797 45 Avenue & 4304-4484 97 Street | Edmonton, AB

Office spaces starting at ± 721 SF

- Multiple buildout configurations ranging in size; suitable for a range of tenant groups
- Air-conditioned offices with lots of natural light
- Ongoing interior upgrades including fresh paint, new carpet, renovated washrooms and LED lighting
- Easy access to many arterial roads such as 99 Street, Calgary Trail, and Whitemud Drive

For more information contact:

Kent Simpson

Vice President

780 203 0425

Kent.Simpson@jll.com

Bronwyn Scrivens

Vice President, SIOR

780 807 4564

Bronwyn.Scrivens@jll.com

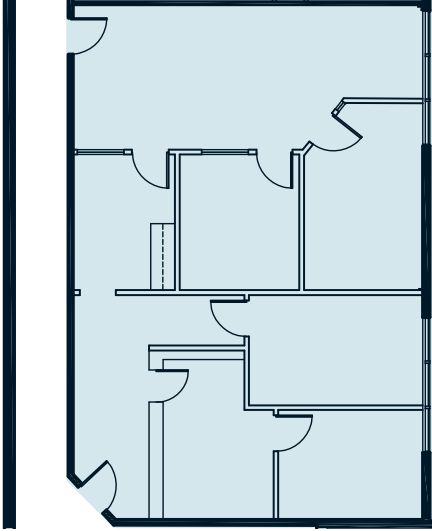


Property Details

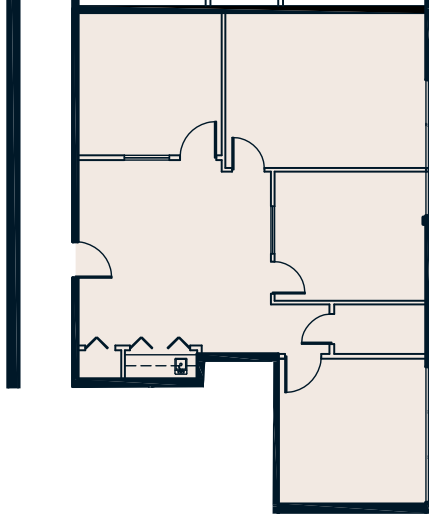
Property Type	Industrial & Office
Year(s) Built	1979/1981
Legal Description	Plan: 7721481; Block: 7; Lot: 18
Building Size	(6) Buildings Total: 236,630 SF Industrial: 194,856 SF Office: 41,774 SF
Available Area	721 - 1,704 SF
Zoning	BE - Business Employment
Construction	Precast concrete, steel frame
Lighting	LED

Power	TBC by Tenants
Heating	Rooftop units with A/C
Internet	Fibre optics
Parking	Ample free parking
Signage	Fascia
Lease Rate (PSF)	\$9.00
Op. Costs (PSF)	\$9.77 Utilities included in Building 1,2, & 6. In-suite janitorial separate

Vacancy | Building 1

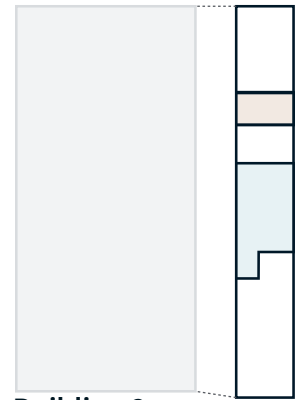
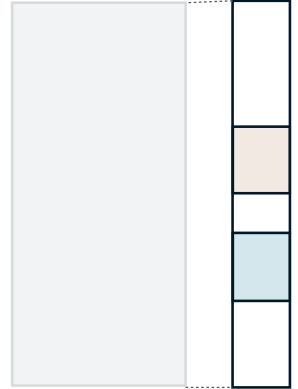


Unit 4466 | $\pm 1,541$ SF
Occupancy: Immediately



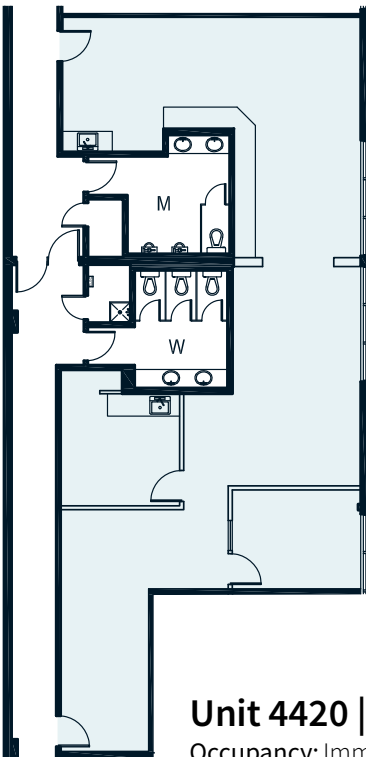
Unit 4482 | $\pm 1,254$ SF
Occupancy: Immediately

Building 1

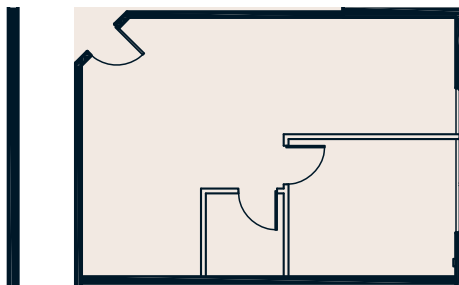


Building 2

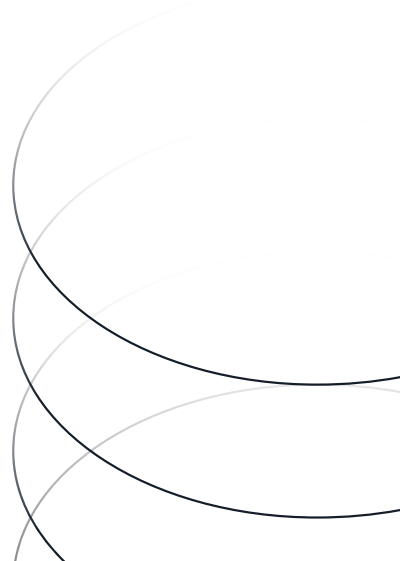
Vacancy | Building 2



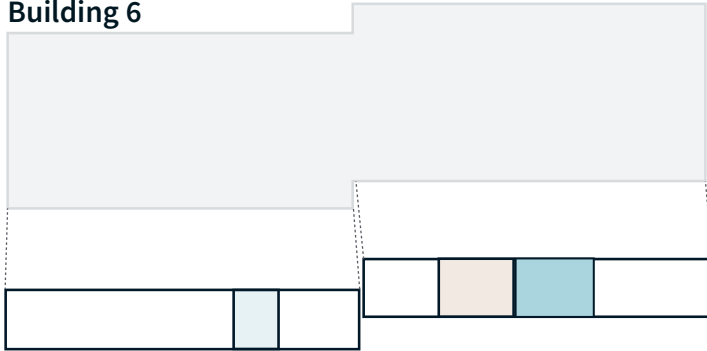
Unit 4420 | $\pm 1,704$ SF
Occupancy: Immediately



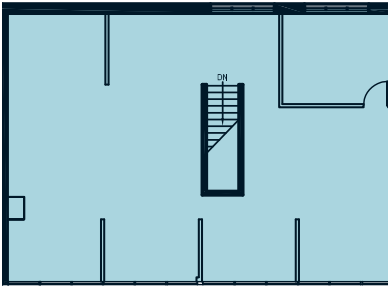
Unit 4436 | ± 721 SF
Occupancy: December 01, 2024



Building 6



Vacancy | Building 6

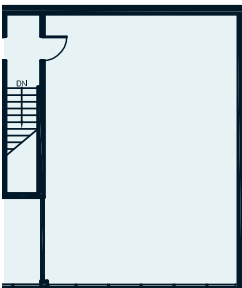


Unit 4372

±1,565 SF

Occupancy:
Immediately

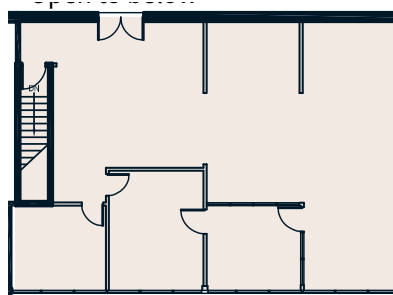
Note:
Additional ±5,181 SF
space available main floor



Unit 4326

±863 SF

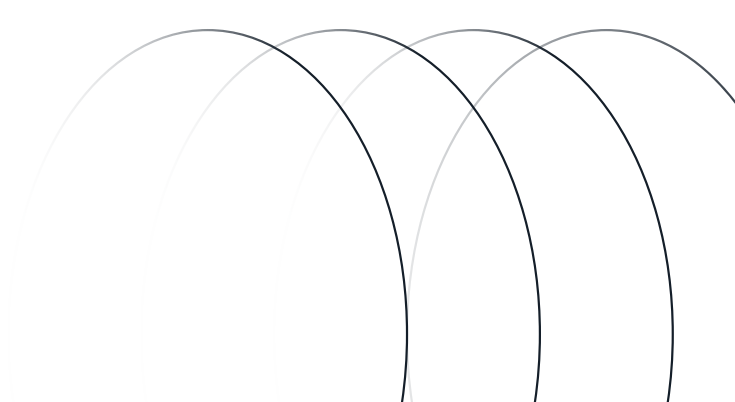
Occupancy:
Immediately



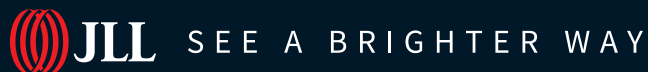
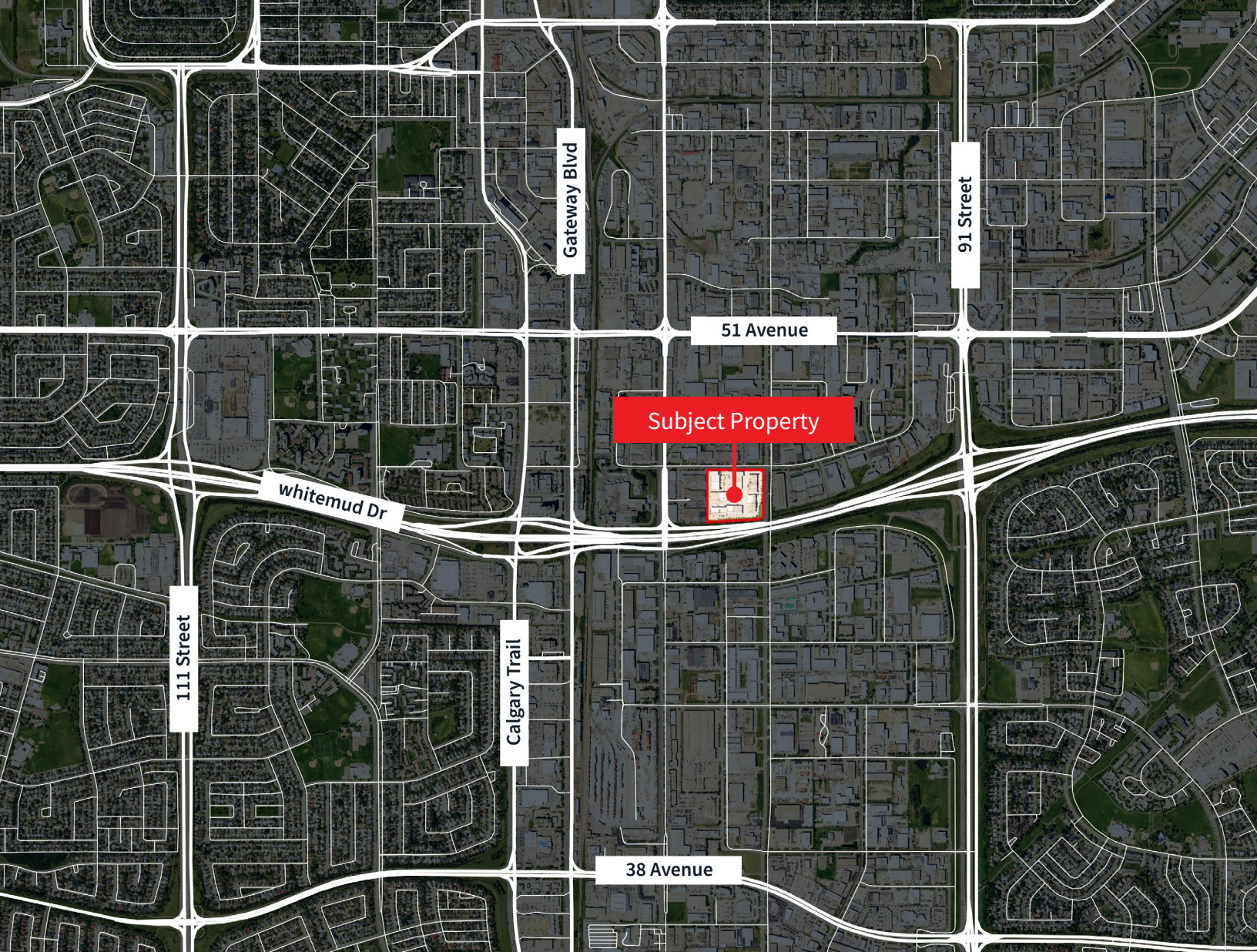
Unit 4346

±1,580 SF

Occupancy:
Immediately







Darryl McGavigan
Senior Vice President
780 328 0064
Darryl.McGavigan@jll.com

Kent Simpson
Vice President
780 203 0425
Kent.Simpson@jll.com

Adam Butler
Executive Vice President
780 328 0065
Adam.Butler@jll.com

Mackenzie York
Associate Vice President
780 920 8463
Mackenzie.York@jll.com

Bronwyn Scrivens
Vice President, SIOR
780 807 4564
Bronwyn.Scrivens@jll.com

Kailee Campbell
Senior Transaction Analyst
780 328 0069
Kailee.Campbell@jll.com

JLL Edmonton Industrial | Suite 2101, 10088 102 Avenue NW Edmonton, Alberta T5J 2Z1

DISCLAIMER: ©2025 Jones Lang LaSalle IP, Inc. All rights reserved. All information contained herein is from sources deemed reliable; however, no representation or warranty is made to the accuracy thereof. The Property may be withdrawn without notice. Neither Owner nor JLL accepts any liability for any loss or damage suffered by any party resulting from reliance on this information. Jones Lang LaSalle Real Estate Services, Inc.