



Centre 51

- Move in ready second floor office space
- Excellent access from Whitemud Drive, Calgary Trail and 99 Street
- High volume traffic with Edmonton ETS bus stop service
- Abundance of surface parking stalls
- Ample energized parking included
- Frontage to 51 Avenue
- Fibre optics available

Get more information

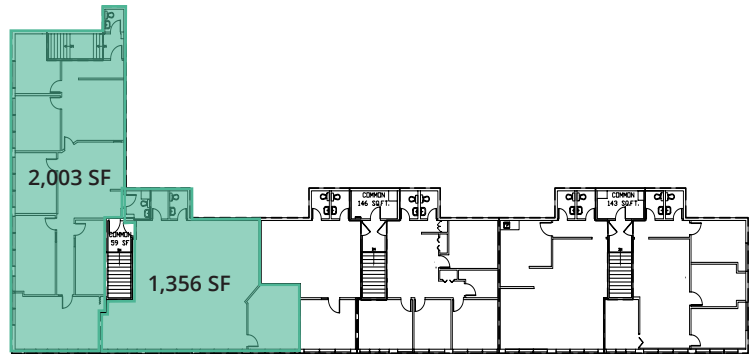
David St. Cyr
Principal
780 964 4601
david.stcyr@avisonyoung.com

For Lease

9738 51 Avenue, Edmonton, Alberta

Offering Summary

Location:	9738 51 Avenue
Area Available:	Unit 218: 1,356 sf Unit 224: 2,003 sf
Asking Rate:	\$12.00 psf
Operating Costs:	\$9.14 psf (2022)
Zoning:	IB - Industrial Business
Available:	Immediately



David St. Cyr
Principal
+1 780 964 4601
david.stcyr@avisonyoung.com

