

FOR LEASE

30 OLAND COURT | DARTMOUTH, NS INDUSTRIAL / OFFICE | 2,838 SF

kw COMMERCIAL
ADVISORSSM
A DIVISION OF KELLER WILLIAMS SELECT REALTY



LOCATION OVERVIEW

The Subject Property is centrally located on Oland Court, off of Thornhill Drive, which can be accessed from either Ilsley Avenue or MacDonald Avenue in the Burnside Industrial Park. Burnside is the largest business park in Atlantic Canada with 1,500 enterprises and over 15,000 employees. The park is a centrally located urban business park with superb transportation links.

30 Oland Court has excellent highway visibility for on building signage or pylon signage to the circumferential Highway 111 (Highway of Heroes), with over 45,000 users driving by daily.

PREMISES FEATURES

- Bright office space with 10' ceilings
- Seven (7) private offices + boardroom
- Cubical room
- Kitchenette + two (2) washrooms
- Large open common area
- Ample parking

SPACE AVAILABLE: 2,838 SF

LEASE RATE: \$8.50 Net + \$5.77 CAM & Tax



Phil Bolhuis
Real Estate Advisor
902.293.4524

philbolhuis@kwcommercial.com

Matt Olsen
Real Estate Advisor
902.489.7187

mattolsen@kwcommercial.com

KELLER WILLIAMS SELECT REALTY
1160 Bedford Highway, Suite 100
Bedford, NS B4A 1C1
www.kwcommercialhalifax.com



FOR LEASE

30 OLAND COURT | DARTMOUTH, NS

INDUSTRIAL / OFFICE | 2,838 SF



Phil Bolhuis
Real Estate Advisor
902.293.4524

philbolhuis@kwcommercial.com

Matt Olsen
Real Estate Advisor
902.489.7187

mattolsen@kwcommercial.com

kw COMMERCIAL
ADVISORS®



FOR LEASE

30 OLAND COURT | DARTMOUTH, NS

INDUSTRIAL / OFFICE | 2,838 SF



Phil Bolhuis
Real Estate Advisor
902.293.4524
philbolhuis@kwcommercial.com

Matt Olsen
Real Estate Advisor
902.489.7187
mattolsen@kwcommercial.com

kw COMMERCIAL
ADVISORS®

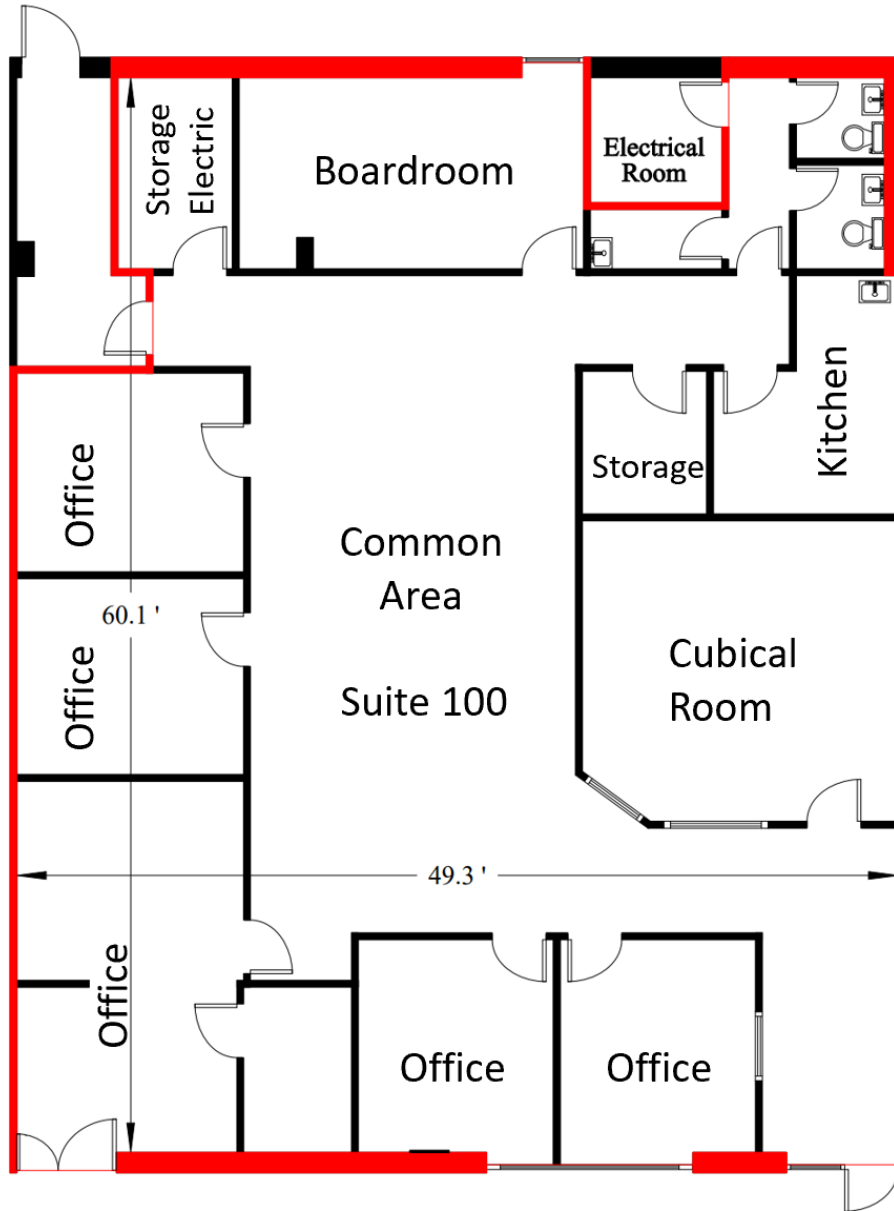


FOR LEASE

30 OLAND COURT | DARTMOUTH, NS

INDUSTRIAL / OFFICE | 2,838 SF

SUITE 100 | GROUND LEVEL



Phil Bolhuis
Real Estate Advisor
902.293.4524

philbolhuis@kwcommercial.com

Matt Olsen
Real Estate Advisor
902.489.7187

mattolsen@kwcommercial.com

kw COMMERCIAL
ADVISORS®

