



FOR LEASE
± 1,600 SF Second Floor Office

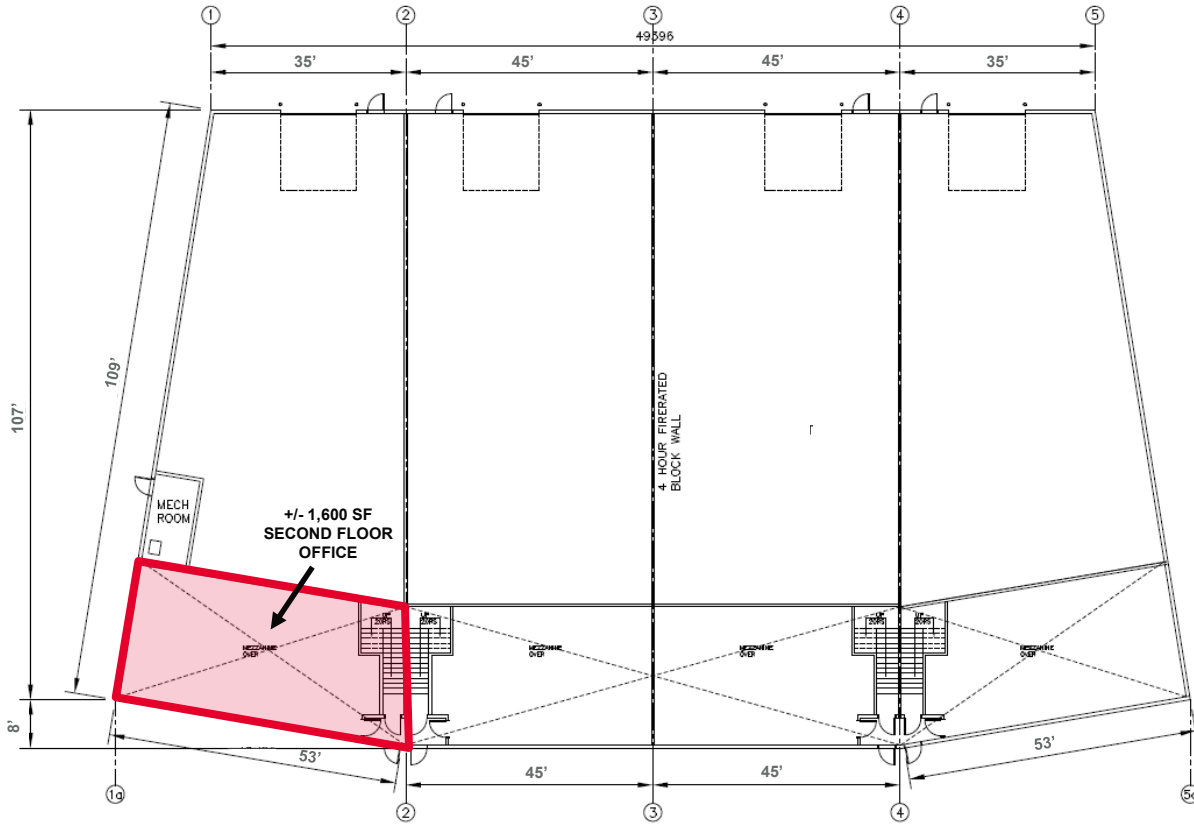
Lease Particulars

District	Eastlake Industrial
Legal Description	Plan 0913797, Unit 1
Zoning	I-G (Industrial – General)
Available Area	± 1,600 SF (office)
Lease Rate	\$2,500 Gross per month (excluding utilities)
Available	Immediately

Property Highlights

- Second floor, open plan office with lots of natural light and private washroom
- Secure entrance
- Good access to Barlow Trail SE, 114th Avenue SE and 52nd Street SE
- Shorter term available

Floor Plan



* All measurements are approximate and to be verified

Map of Location

