

FOR LEASE



1615 BISHOP ST N
CAMBRIDGE, ON

40,300 SF
on 2.127 Acres

The Opportunity

1615 Bishop St N, Cambridge



40,300 SF freestanding industrial building on 2.127 acres available for lease. Excellent manufacturing building with 1,200 amp/600 volt electrical service, main crane bay is 50' x 260' with a combination of 10 and 15 ton cranes, 21' clear under joists, multiple drive-in doors with truck level platform and existing air lines and electrical distribution throughout. M3 zoning designation, which supports a variety of general industrial uses, including outside storage. Located in the L.G. Lovell Business Park and in close proximity to Highway 401.



Building Area
40,300 SF



Land Area
2.127 Acres



Ceiling Heights
21'



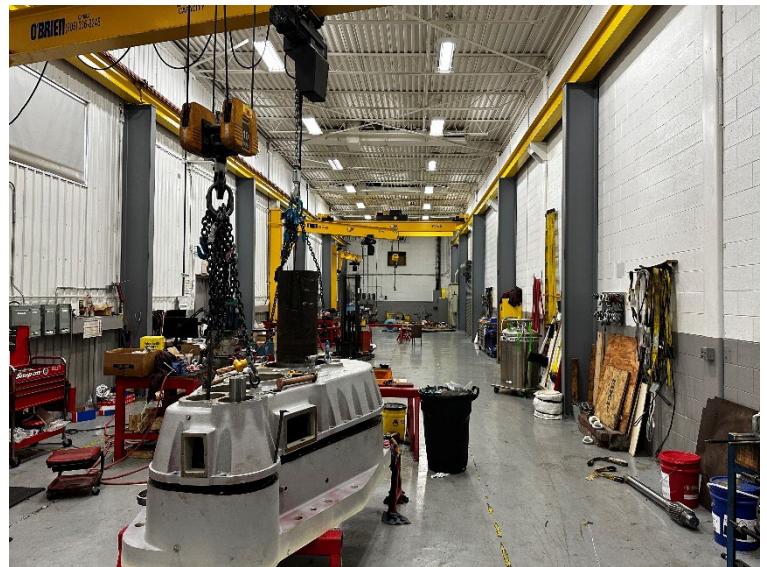
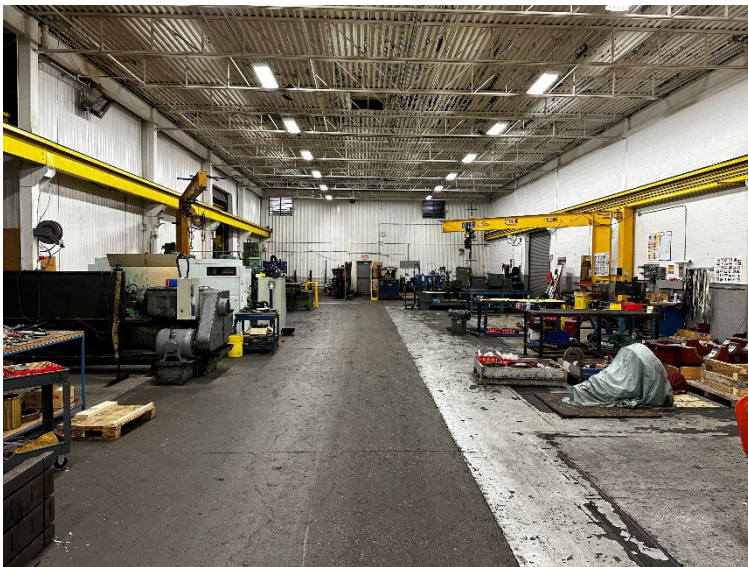
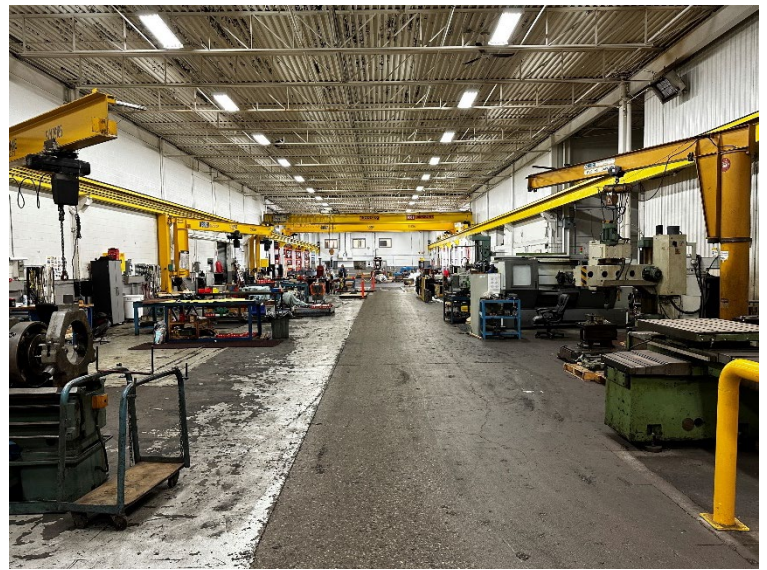
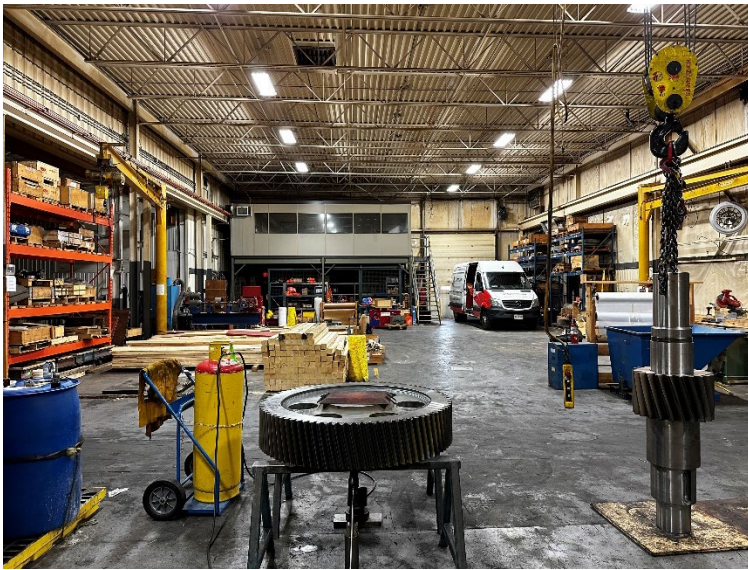
Loading
4 Drive-In Doors



Zoning
M3



Electrical Service
1,200 amps/
600 volts



Property Specifications 1615 Bishop St N, Cambridge

Total Building Area: 40,300 SF

Office Area: 6,000 SF

Land Area: 2.127 Acres

Ceiling Heights: 21'

Loading Doors: 4 - 12' x 14' D/I

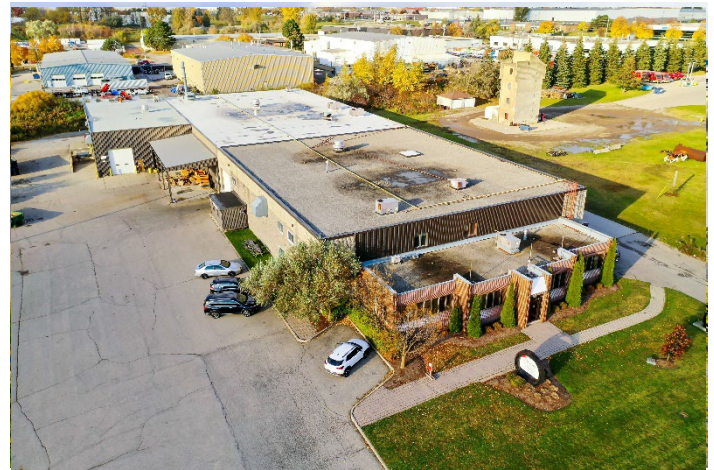
Electrical Service: 1,200 amps/600 volts

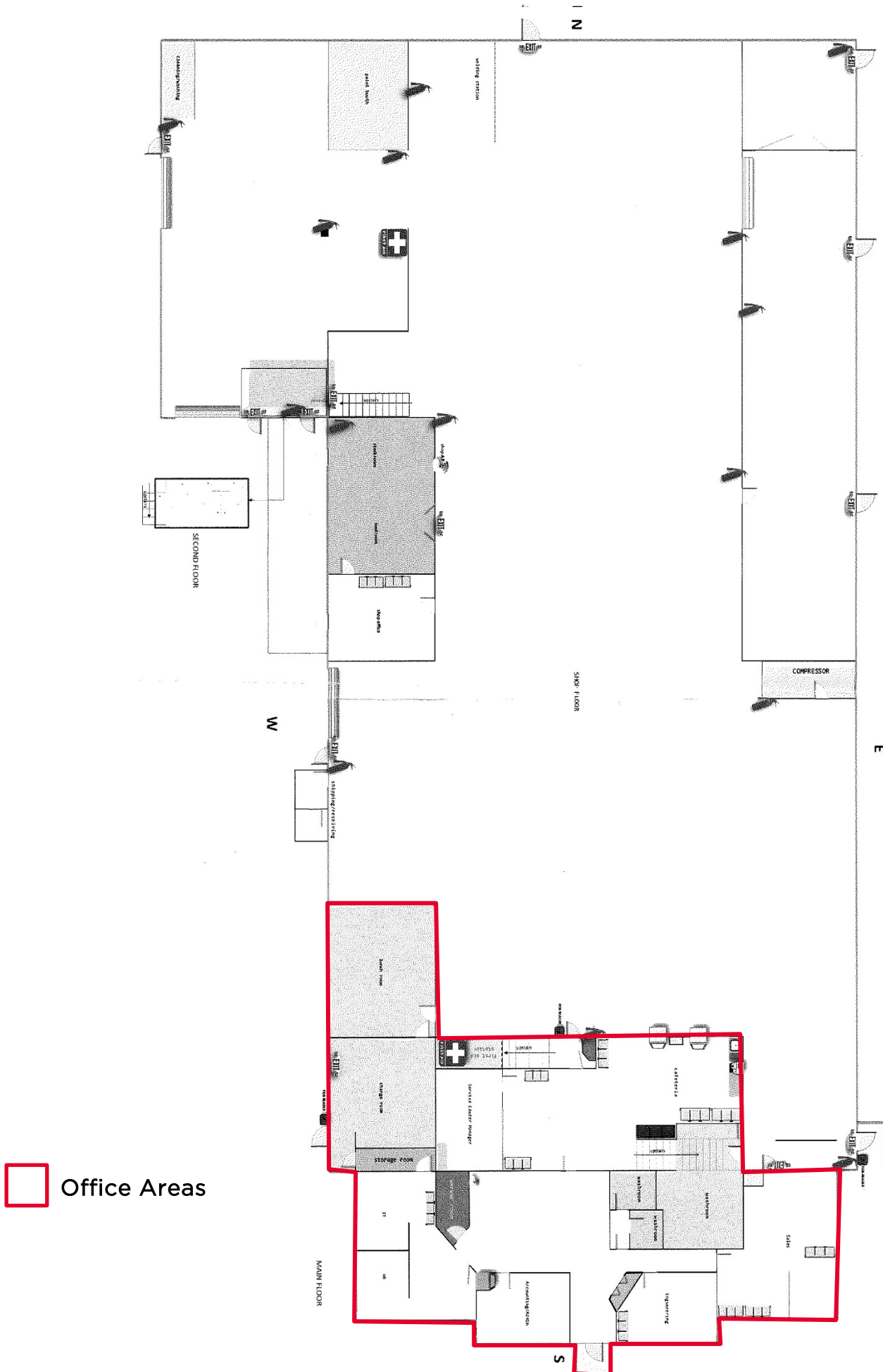
Zoning: M3

Possession: June 1, 2024

Estimated TMI: \$3.00/SF (2023)

Lease Rate: \$14.00/SF





LOCATION OVERVIEW

1615 Bishop St N, Cambridge



Jordan Palmer*

SENIOR VICE PRESIDENT
519.804.4384
jordan.palmer@cushwakewr.com

Joshua Buffinga*

SALES REPRESENTATIVE
519.804.4386
joshua.buffinga@cushwakewr.com



Scott Anderson, sior**

SENIOR VICE PRESIDENT
519.804.4381
scott.anderson@cushwakewr.com

David Anderson**

SENIOR VICE PRESIDENT
519.804.4382
david.anderson@cushwakewr.com

4295 King Street East Suite 401
Kitchener, ON N2P 0C6
519.585.2200
www.cushwakewr.com

*SALES REPRESENTATIVE **BROKER

Cushman & Wakefield Waterloo Region Ltd. copyright 2024. No warranty or representation, express or implied, is made to the accuracy or completeness of the information contained herein, and same is submitted subject to errors, omissions, change of price, rental or other conditions, withdrawal without notice, and to any special listing conditions imposed by the property owner(s). As applicable, we make no representation as to the condition of the property (or properties) in question.