

MULTI TENANT OFFICE/SHOWROOM/WAREHOUSE

AVAILABLE AREA: Up to 92,570 sq. ft. (subdivisible)

RENTAL RATE: TBD

TAXES & OPERATING: \$4.95 psf (2020 Estimate)

AVAILABILITY: Fall 2020

ZONING: IG6 Industrial Business Park Zoning

FEATURES

- + Multi tenant new build in Kanata North
- + Close proximity to Highway 417 at March Road
- + Dock level loading
- + 22 ft. clear height
- + Ample on site parking

1243 TERON ROAD

OTTAWA | ON



This disclaimer shall apply to CBRE Limited, Real Estate Brokerage, and to all other divisions of the Corporation; to include all employees and independent contractors ("CBRE"). The information set out herein, including, without limitation, any projections, images, opinions, assumptions and estimates obtained from third parties (the "Information") has not been verified by CBRE, and CBRE does not represent, warrant or guarantee the accuracy, correctness and completeness of the Information. CBRE does not accept or assume any responsibility or liability, direct or consequential, for the Information or the recipient's reliance upon the Information. The recipient of the Information should take such steps as the recipient may deem necessary to verify the Information prior to placing any reliance upon the Information. The Information may change and any property described in the Information may be withdrawn from the market at any time without notice or obligation to the recipient from CBRE. CBRE and the CBRE logo are the service marks of CBRE Limited and/or its affiliated or related companies in other countries. All other marks displayed on this document are the property of their respective owners. All Rights Reserved.



IAN SHACKELL *
SENIOR VICE PRESIDENT
+1 613 782 2285
ian.shackell@cbre.com

* Sales Representative

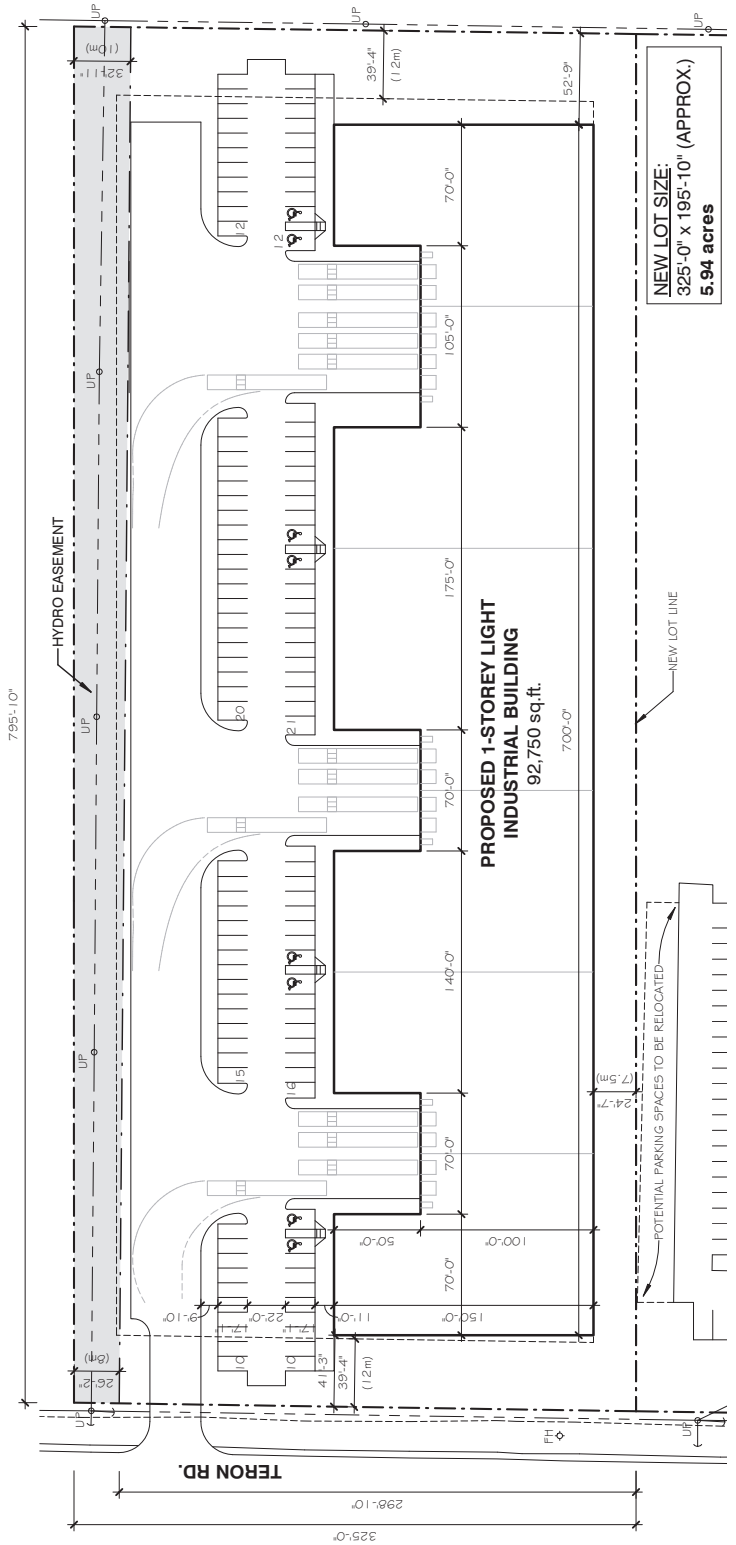
MATT SHACKELL
SALES REPRESENTATIVE
+1 613 288 1583
matt.shackell@cbre.com

CBRE LIMITED
REAL ESTATE BROKERAGE
T: +1 613 782 2266
F: +1 613 782 2296

CBRE



SITE PLAN



IAN SHACKELL *
SENIOR VICE PRESIDENT
+1 613 782 2285
ian.shackell@cbre.com

MATT SHACKELL
SALES REPRESENTATIVE
+1 613 288 1583
matt.shackell@cbre.com

CBRE LIMITED
REAL ESTATE BROKERAGE
T: +1 613 782 2266
F: +1 613 782 2296

* Sales Representative

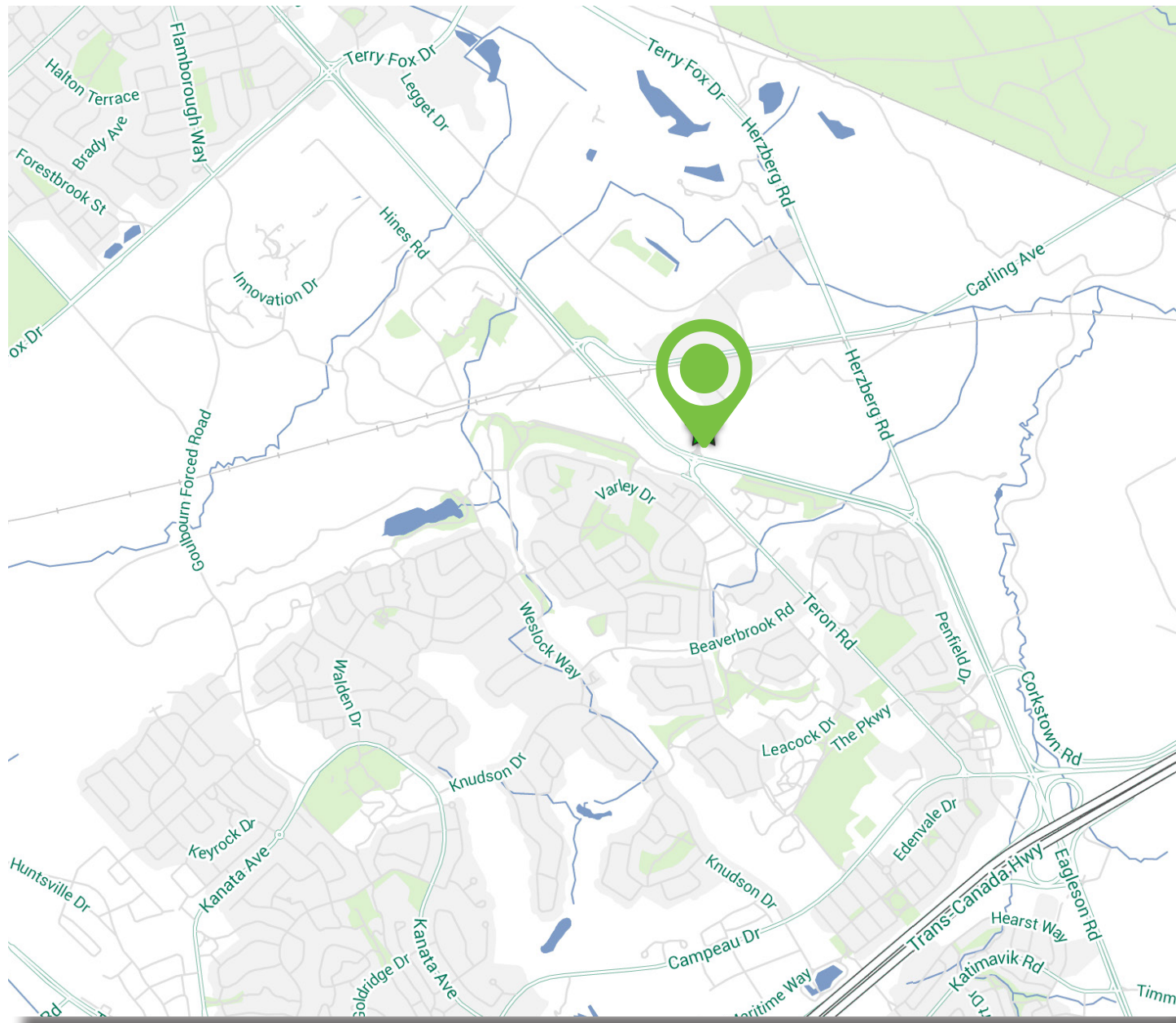


**FOR
LEASE**

1243 TERON ROAD
OTTAWA, ON



SITE OVERVIEW



This disclaimer shall apply to CBRE Limited, Real Estate Brokerage, and to all other divisions of the Corporation; to include all employees and independent contractors ("CBRE"). The information set out herein, including, without limitation, any projections, images, opinions, assumptions and estimates obtained from third parties (the "Information") has not been verified by CBRE, and CBRE does not represent, warrant or guarantee the accuracy, correctness and completeness of the Information. CBRE does not accept or assume any responsibility or liability, direct or consequential, for the Information or the recipient's reliance upon the Information. The recipient of the Information should take such steps as the recipient may deem necessary to verify the Information prior to placing any reliance upon the Information. The Information may change and any property described in the Information may be withdrawn from the market at any time without notice or obligation to the recipient from CBRE. CBRE and the CBRE logo are the service marks of CBRE Limited and/or its affiliated or related companies in other countries. All other marks displayed on this document are the property of their respective owners. All Rights Reserved.



IAN SHACKELL *
SENIOR VICE PRESIDENT
+1 613 782 2285
ian.shackell@cbre.com

* Sales Representative

MATT SHACKELL
SALES REPRESENTATIVE
+1 613 288 1583
matt.shackell@cbre.com

CBRE LIMITED
REAL ESTATE BROKERAGE
T: +1 613 782 2266
F: +1 613 782 2296

CBRE