



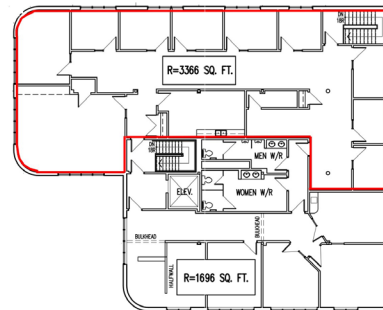
► COMMERCIAL SPACE NOW AVAILABLE

AVAILABLE SPACE: 2nd Floor

1255 Main Street, Moncton, NB

BUILDING SUMMARY:

PROPERTY TYPE: Multi-tenant office building
ADDRESS: 1255 Main Street
SIZE: +/- 3,366 sq.ft.
SPACE: 2nd Floor



LOCATION FACTS:



Centrally
Located



Central
HVAC



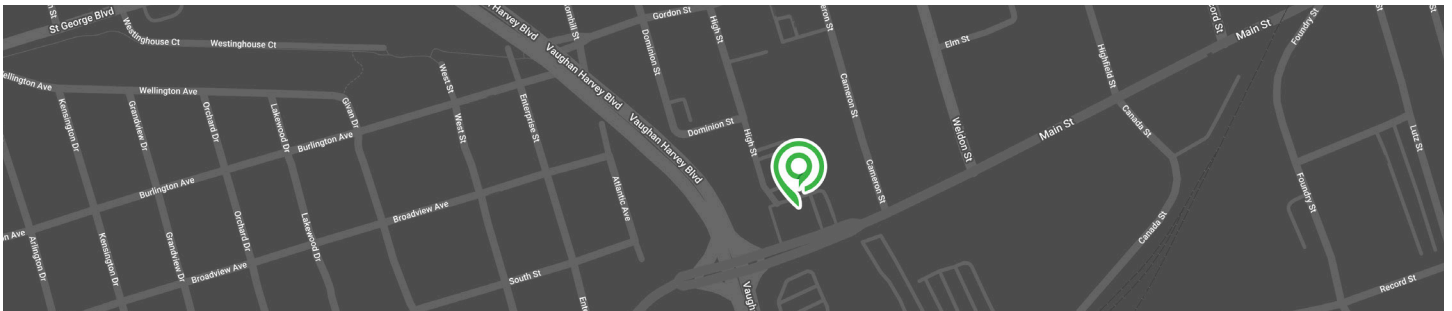
Full Sprinkler
System



On-Site
Parking



Elevator
Service



ACCESSIBLE BY HIGH STREET // 1255 MAIN STREET, MONCTON, NB



Patrick Gillespie
(506) 866-0084
pgillespie@theashfordgroup.com



Ryan Gillespie
(506) 874-5832
rgillespie@theashfordgroup.com



ashford
PROPERTIES | *Space to Grow*