



**CUSHMAN &  
WAKEFIELD**  
Atlantic



**FOR LEASE**

**50 DRISCOLL CRESCENT  
MONCTON, NB**

**+/- 593 SF**

**SECOND FLOOR  
PROFESSIONAL OFFICE  
SUITE**

77 Vaughan Harvey Blvd  
Suite 402  
Moncton, NB  
Main +1 506 387 6925  
[cwatlantic.com](http://cwatlantic.com)



FOR LEASE

# 50 Driscoll Crescent Moncton, New Brunswick



CUSHMAN &  
WAKEFIELD  
Atlantic



## 2ND FLOOR PROFESSIONAL OFFICE SUITES

### Property Highlights

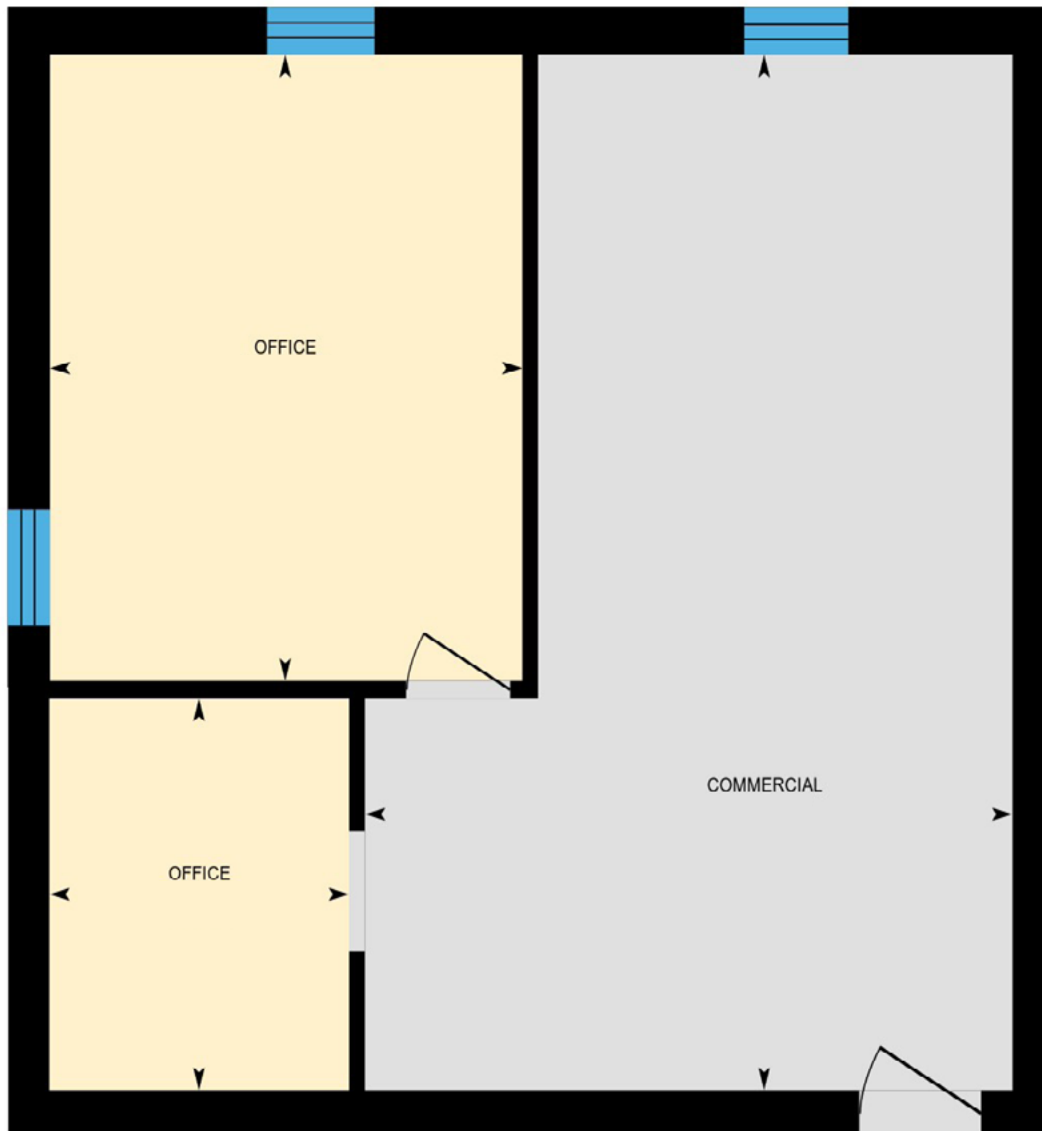
Ideal opportunity for office tenant in central location in the Moncton Industrial Park.

- 2 storey professional office building
- Natural light throughout
- Excellent street frontage
- Site visibility
- Pylon sign signage options
- Ample on-site parking
- Easy access to nearby bus route
- Heat/power is included; tenant is responsible for suite cleaning



### Contact

DONNA GREEN  
Vice President  
+1 506 387 6930  
dgreen@cwatlantic.com



3D VIRTUAL TOUR

## Contact

DONNA GREEN  
Vice President  
+1 506 387 6930  
dgreen@cwatlantic.com



## Contact

DONNA GREEN  
Vice President  
+1 506 387 6930  
dgreen@cwatlantic.com



**FOR LEASE**  
50 Driscoll Crescent | Moncton, NB

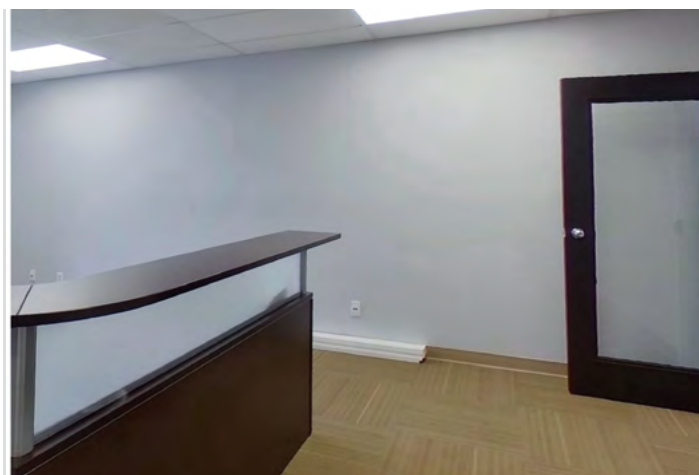
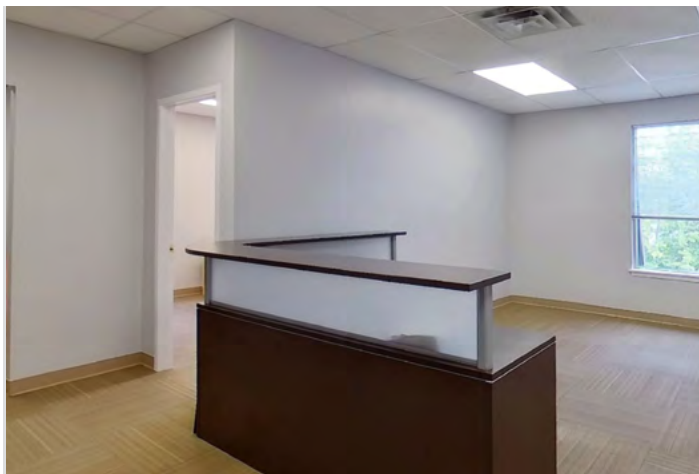


## **SECOND FLOOR**

Suite 200 | +/- 593 sf | \$925 Monthly\*

Beautiful corner suite features an open concept area, one private office, and small meeting room/storage area.

\*Net lease structure. Additional rent subject to annual adjustments



## **Contact**

DONNA GREEN  
Vice President  
+1 506 387 6930  
dgreen@cwatlantic.com



## Location Information

50 Driscoll is a two storey professional building in the heart of the Moncton Industrial Park with convenient access to major arteries throughout the city and nearby all amenities. The central location is ideal for many business uses including professional office, service commercial, and many other businesses.



Located in the  
Moncton  
Industrial Park



5km to  
Downtown  
Moncton



Turnkey Spaces



Ample onsite  
parking



Easy access to  
major roads

## Contact

DONNA GREEN  
Vice President  
+1 506 387 6930  
dgreen@cwatlantic.com