

8501

MISSISSAUGA ROAD

BRAMPTON | ON

OFFICE SPACE FOR LEASE

- ✓ OVERLOOKING ADJACENT LIONHEAD GOLF & COUNTRY CLUB
- ✓ BEAUTIFUL VIEWS OF THE GOLF COURSE
- ✓ CLOSE TO HIGHWAY 401 & ETR 407

PARKING RATIO
5/1,000
SF LEASED



3RD FLOOR MODEL SUITE

FOR MORE INFORMATION:

 **Gary L. Williamson***
Senior Vice President
416 495 6247
gary.williamson@cbre.com

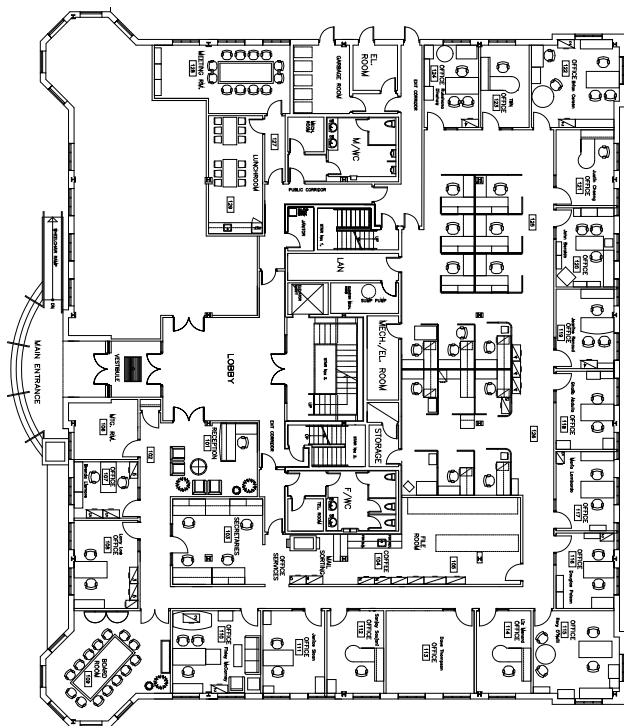
 **Craig Williamson***
Vice President
416 495 6267
craig.williamson@cbre.com

 **John Koumaris***
Associate Vice President
416 798 6249
john.koumaris@cbre.com

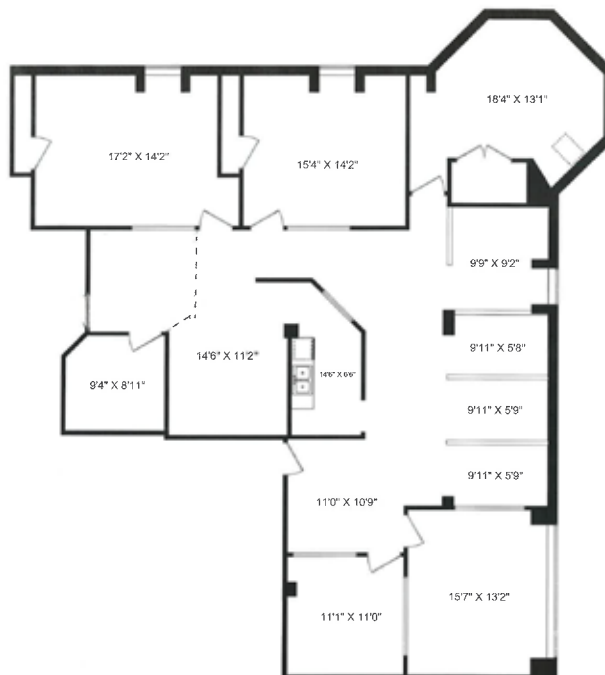
CBRE

*Sales Representative

FLOOR PLANS



SUITE 100



SUITE 302

8501

MISSISSAUGA ROAD

BRAMPTON | ON

OFFICE SPACE FOR LEASE



DETAILS

Size: Suite 100: 8,400 sq. ft. (divisible)
Suite 302: 2,612 sq. ft.

Net Rent: \$13.50 net per sq. ft. per annum

T&O: \$10.48 per sq. ft. per annum (2017 estimate)

COMMENTS

- Office space overlooking Lionhead Golf & Country Club
- Just 3 kilometers from 407 ETR
- Public transit stops at the front door
- Tenants are just minutes away from an abundance of area amenities including restaurants, banks and shops located at Steeles Avenue and Mississauga Road
- Large windows and an abundance of natural light
- Highly respected and very reputable Landlord
- Speak to listing agents regarding future building/podium signage

8501

MISSISSAUGA ROAD

BRAMPTON | ON

OFFICE SPACE FOR LEASE

LOCATION

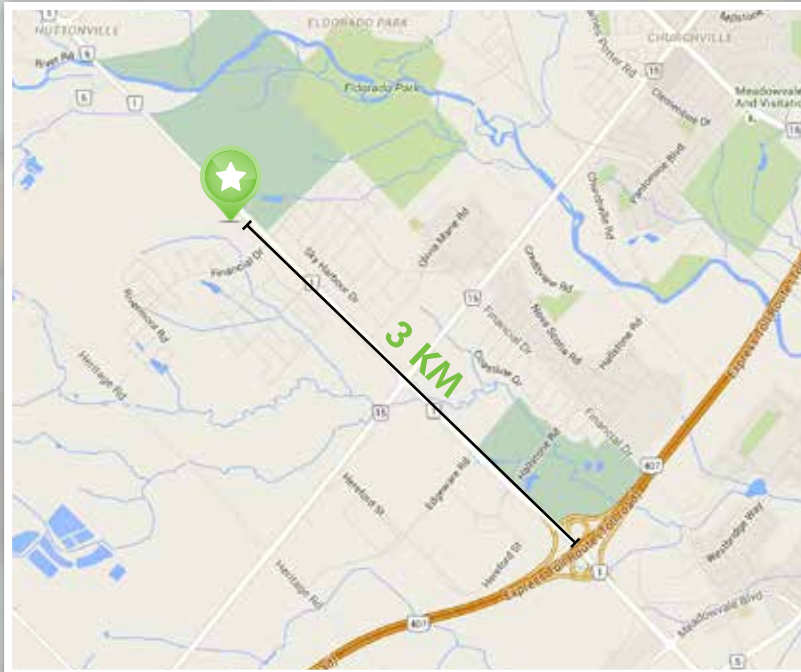


LEGEND

- Mount Pleasant GO Station
- Mississauga Road & Steeles Avenue
- ★ Subject Site
- Brampton Transit Bus 60-Mississauga Road
- Steeles Avenue

Transit Connection	Served By
Mount Pleasant GO Station	4 & 4A – Chinguacousy 5 & 5A – Bovaird 9 – Vodden 29 & 29A – Williams 56 – Springbrook 60 – Mississauga Road 505 – Züm Bovaird
Mississauga Rd & Steeles Ave	11 & 11A – Steeles 51 – Hereford 58 – Financial 60 – Mississauga Road 511 – Züm Steeles

Transit Connection	Transit Time to 8501 Mississauga Road
Mount Pleasant GO Station	13 MIN
Mississauga Rd & Steeles Ave	5 MIN



Gary L. Williamson*
Senior Vice President
416 495 6247
gary.williamson@cbre.com

Craig Williamson*
Vice President
416 495 6267
craig.williamson@cbre.com

John Koumaris*
Associate Vice President
416 798 6249
john.koumaris@cbre.com

CBRE Limited
2005 Sheppard Avenue East
Suite 800
Toronto, ON, M2J 5B4
www.cbre.ca

*Sales Representative

February 2017. This disclaimer shall apply to CBRE Limited, Real Estate Brokerage, and to all other divisions of the Corporation, to include all employees and independent contractors ("CBRE"). The information set out herein, including, without limitation, any projections, images, opinions, assumptions and estimates obtained from third parties (the "Information") has not been verified by CBRE, and CBRE does not represent, warrant or guarantee the accuracy, correctness and completeness of the Information. CBRE does not accept or assume any responsibility or liability, direct or consequential, for the Information or the recipient's reliance upon the Information. The recipient of the Information should take such steps as the recipient may deem necessary to verify the Information prior to placing any reliance upon the Information. The Information may change and any property described in the Information may be withdrawn from the market at any time without notice or obligation to the recipient from CBRE. CBRE and the CBRE logo are the service marks of CBRE Limited and/or its affiliated or related companies in other countries. All other marks displayed on this document are the property of their respective owners. All Rights Reserved. Mapping Sources: Canadian Mapping Services canadamapping@cbre.com; MapPoint, DMTI Spatial, Environics Analytics, Microsoft Bing, Google Earth

