

# 340 FERRIER ST

1,627 SF—3,241 SF Available for Lease



**Colin Lam**  
Sales Representative  
**416-640-5734**

**M.J. LAWSON**  
REAL ESTATE LTD.  
BROKERAGE

THE STATEMENTS AND INFORMATION CONTAINED HEREIN ARE BASED UPON THE INFORMATION FURNISHED BY THE PRINCIPALS AND SOURCES WHICH WE DEEM RELIABLE FOR WHICH WE CAN ASSUME NO RESPONSIBILITY, BUT WHICH WE BELIEVE TO BE CORRECT. THIS SUBMISSION IS MADE SUBJECT TO PRIOR CONSUMMATION, CHANGE IN PRICE OR TERM, ERRORS, OMISSIONS, OR WITHDRAWAL FROM THE MARKET WITHOUT NOTICE.

416-868-9901  
[www.mjlawson.com](http://www.mjlawson.com)



# PROPERTY OVERVIEW

SIZE:	Ste. 200:	3,241 SF
	Ste. 203:	1,627 SF

NET RENTAL RATE:	\$13.00 PSF
------------------	-------------

ADDITIONAL RENT: Estimate (2024/2025)	\$12.73 PSF
--	-------------

COMMISSION:	\$1.00/psf per year leased up to 5 years
-------------	---



## HIGHLIGHTS

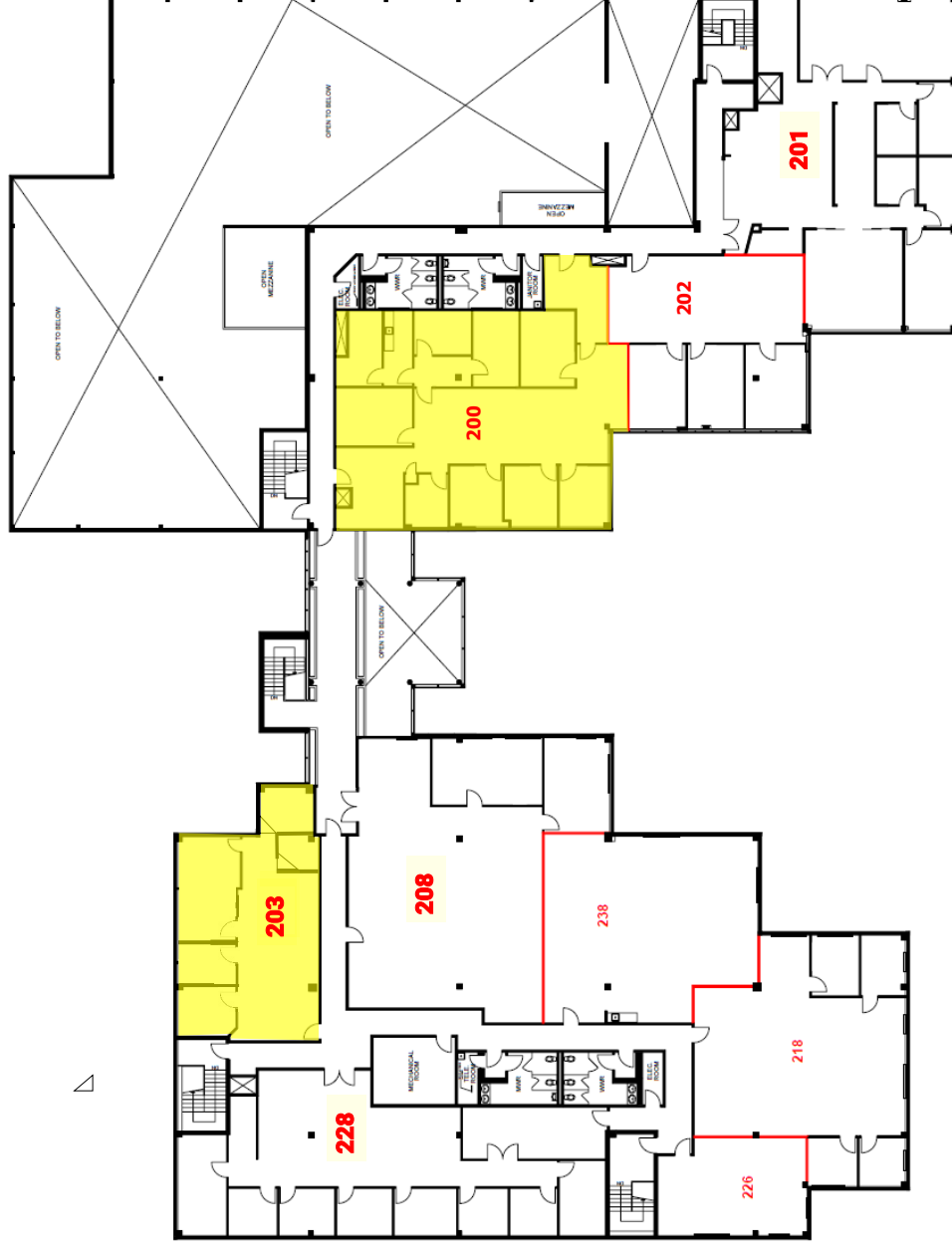
- Excellent Location, Easy Access To Steeles Avenue, Highway 404 And Highway 407
- New Elevator and Renovated Common Areas
- Fantastic Property Management team.
- Ample On-Site Parking



**M.J. LAWSON**  
REAL ESTATE LTD.  
BROKERAGE  
**416-868-9901**

STATEMENTS AND INFORMATION CONTAINED HEREIN ARE BASED UPON THE INFORMATION FURNISHED BY THE PRINCIPALS AND SOURCES WHICH WE DEEM RELIABLE FOR WHICH WE CAN ASSUME NO RESPONSIBILITY, BUT WHICH WE BELIEVE TO BE CORRECT. THIS SUBMISSION IS MADE SUBJECT TO PRIOR CONSUMMATION, CHANGE IN PRICE OR TERM, ERRORS, OMISSIONS, OR WITHDRAWAL FROM THE MARKET WITHOUT NOTICE.

## 2nd Floor Plan - 340 Ferrier Street



**Available**

**Space**

**Suite 200—3,241 SF**

**Suite 203—1,627 SF**

**M.J. LAWSON**  
REAL ESTATE LTD.  
BROKERAGE

STATEMENTS AND INFORMATION CONTAINED HEREIN ARE BASED UPON THE INFORMATION FURNISHED BY THE PRINCIPALS AND SOURCES WHICH WE DEEM RELIABLE FOR WHICH WE CAN ASSUME NO RESPONSIBILITY, BUT WHICH WE BELIEVE TO BE CORRECT. THIS SUBMISSION IS MADE SUBJECT TO PRIOR CONSUMPTION, CHANGE IN PRICE OR TERM, ERRORS, OMISSIONS, OR WITHDRAWAL FROM THE MARKET WITHOUT NOTICE.