



Colliers



Square Feet:

2,047 - 14,069



GO Transit  
at doorstep



Parking  
on site

[View Website](#)

[View Property Video](#)

For Lease | 1100 Burloak Drive, Burlington



## Burlington's premier office community, suites **for lease**

Burloak Towers is comprised of two Class 'A' office building, offering tenant's flexibility in terms of growth, along with a vast array of amenities.

**Adam Dauphinee\*\***

Senior Vice President, LEED, AP  
+1 416 620 2872  
adam.dauphinee@colliers.com

**Chris Burans\***

Senior Vice President  
+1 416 620 2866  
chris.burans@colliers.com



# Property Overview

Address	1100 Burloak Drive, Burlington	
Location	Located on the north-west corner of Burloak Drive and the QEW	
Available	Immediately	
Lease Type	Head Lease	
Parking	Unreserved Surface Parking	
	3.05 : 1,000 SF Parking Ratio	
Rentable Suite Options	Suite 400	9,409 SF
	Suite 500	14,069 SF
	Suite 502	4,465 SF
	Suite 503	2,047 SF
	Suite 504	3,981 SF
	Suite 603	3,624 SF
Net Rent	\$17.75 PSF	
Additional Rent	\$18.48 PSF	
Building Class	Class A	
Ceiling	Drop Ceiling	

## Key Highlights



GO Transit at  
doorstep



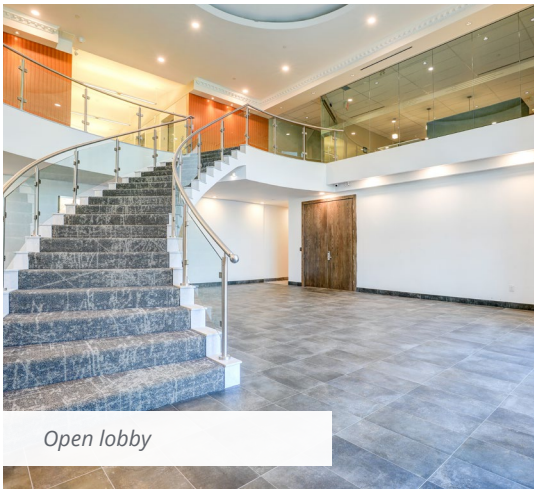
Restaurant  
on-site



Surface parking  
available



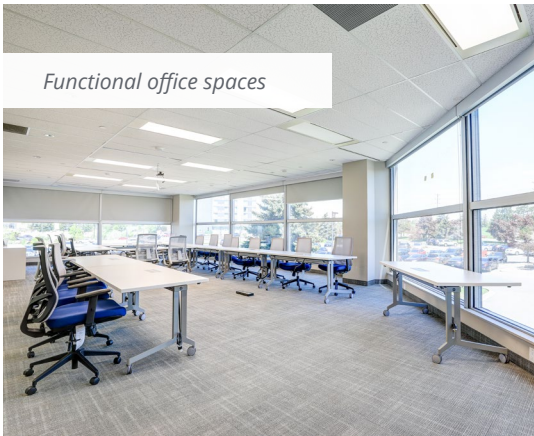
Daycare  
on-site



Open lobby



Brand new padel court



Functional office spaces



New gym coming to complex!



# Suite 400

9,409 SF

- Built-Out Suite
- Private Offices
- Reception
- Private Offices

500

MECH. ROOM

ELEC. ROOM

DATA

DATA

Leased

## Suite 500

14,069 SF

- Built-out Suite
- Reception
- Private Offices
- Kitchenette
- Boardroom
- Lots of Natural Light

# Floor Plan Overview



## Floor plan

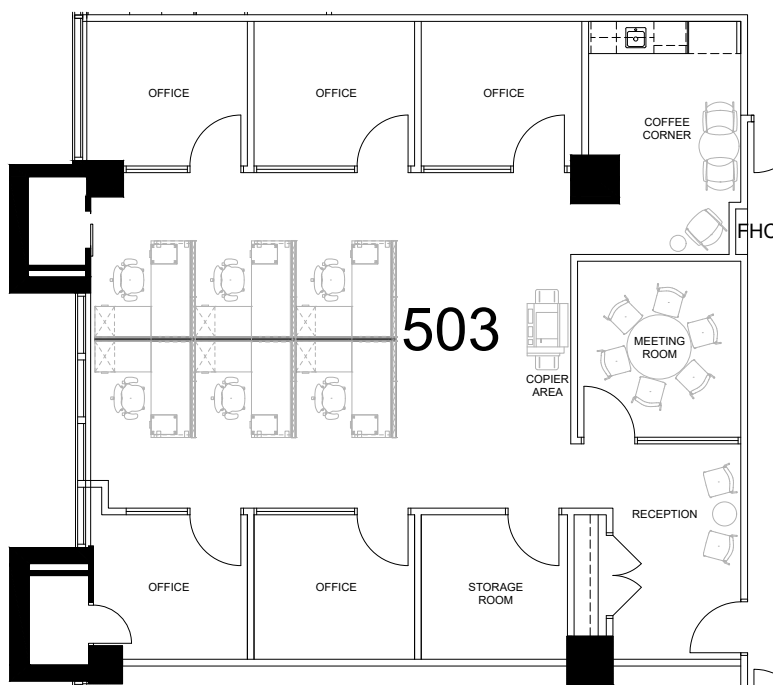


## Suite 502

4,465 SF

- Built-out suite
- Private Offices
- Kitchenette
- Boardroom
- Reception area
- Private phone rooms
- Plenty of open workspace

## Floor plan



## Suite 503

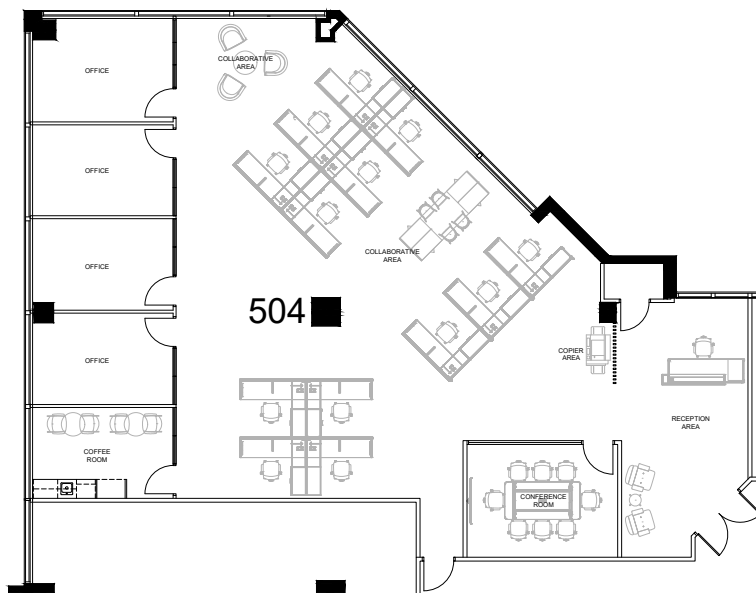
2,047 SF

- Built-out suite
- Reception
- Private offices
- Kitchenette
- Meeting room
- Open workspace

# Floor Plan Overview



## Floor plan

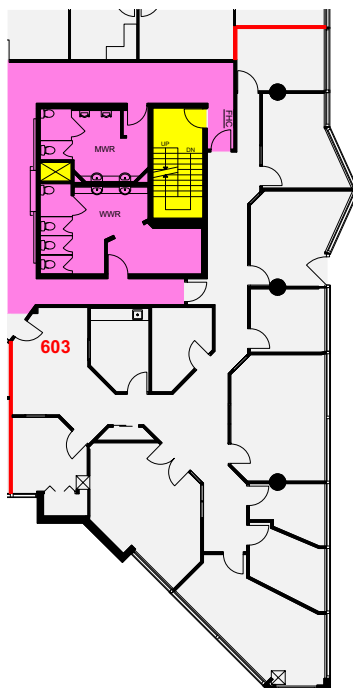


## Suite 504

3,981 SF

- Built-out suite
- Private offices
- Kitchenette
- Conference room
- Reception area
- Open workspace

## Floor plan



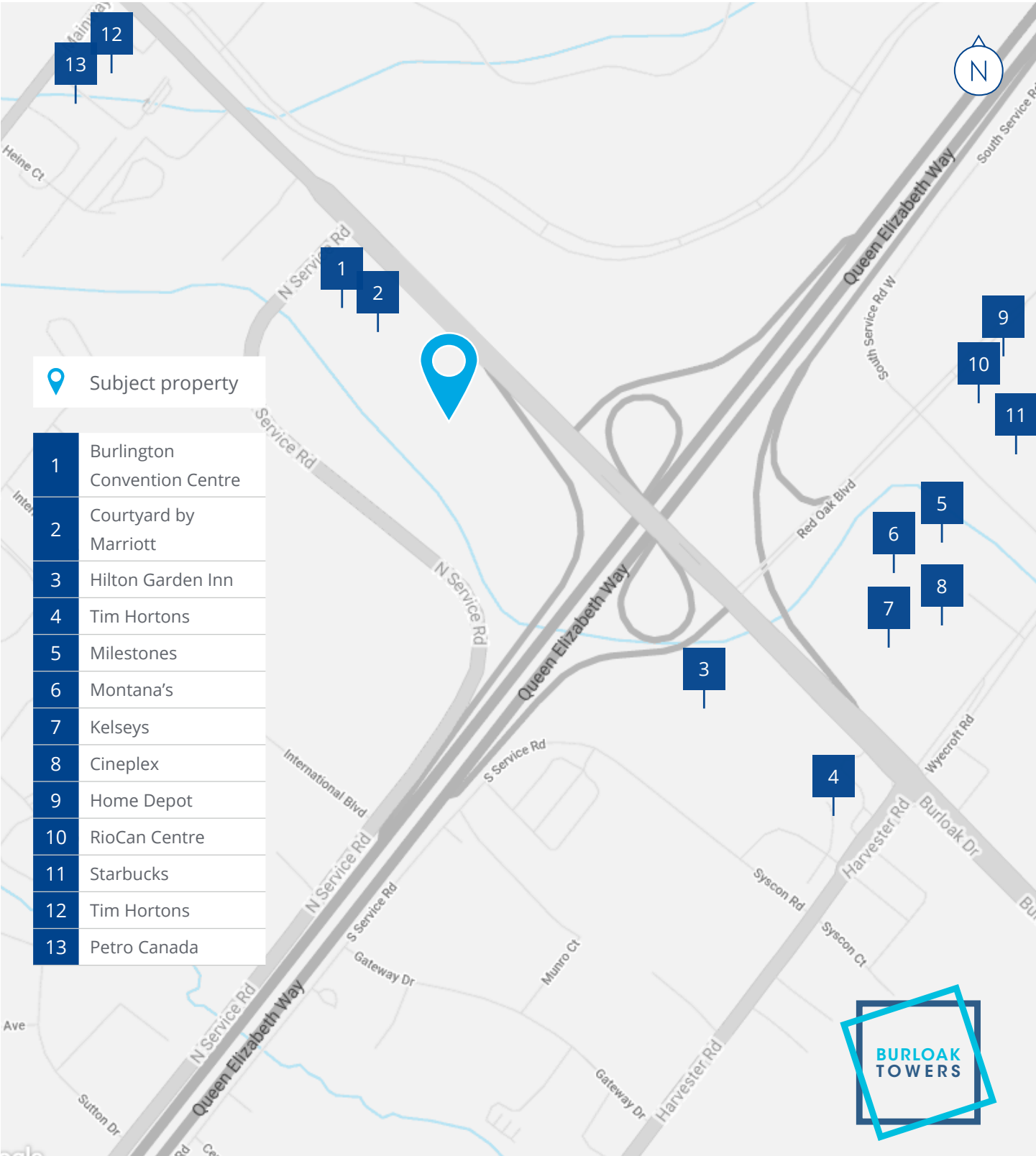
## Suite 603

3,624 SF

- Built-out Suite
- Private Offices
- Kitchenette

[View Virtual Tour](#)

# Surrounding Amenities







[View Online Listing](#)

1100 Burloak Drive, Burlington, ON

**Adam Dauphinee\*\***

Senior Vice President, LEED, AP  
+1 416 620 2872  
+1 416 505 4828  
adam.dauphinee@colliers.com

\* Sales Representative \*\* Broker

**Chris Burans\***

Senior Vice President  
+1 416 620 2866  
+1 416 258 9845  
chris.burans@colliers.com



This document has been prepared by Colliers International for advertising and general information only. Colliers International makes no guarantees, representations or warranties of any kind, expressed or implied, regarding the information including, but not limited to, warranties of content, accuracy and reliability. Any interested party should undertake their own inquiries as to the accuracy of the information. Colliers International excludes unequivocally all inferred or implied terms, conditions and warranties arising out of this document and excludes all liability for loss and damages arising there from. This publication is the copyrighted property of Colliers international and/or its licensor(s). Copyright © 2025 Colliers Canada

Accelerating success.