

ENBRIDGE
CENTRE

FOR LEASE

10175 101 Street NW Edmonton | AB

EDMONTON'S SKYLINE HAS A NEW STANDARD.



Colliers

**VACANCIES AVAILABLE:**

- Office: 936 to 18,475 square feet

SPECIFICATIONS:

- Asking Rate: \$36.00 per square foot (Office)
- Operating Costs: \$25.16 per square foot (2025)
- Tenant Improvement Allowance: Negotiable
- 9' ceiling heights
- Reserved 24/7, private, heated underground parkade (1 stall: 1,750 SF at \$450/month/stall)
- LED lighting throughout
- LEED Gold Core and Shell
- LEED Platinum Operating
- BOMA 360

FEATURES:

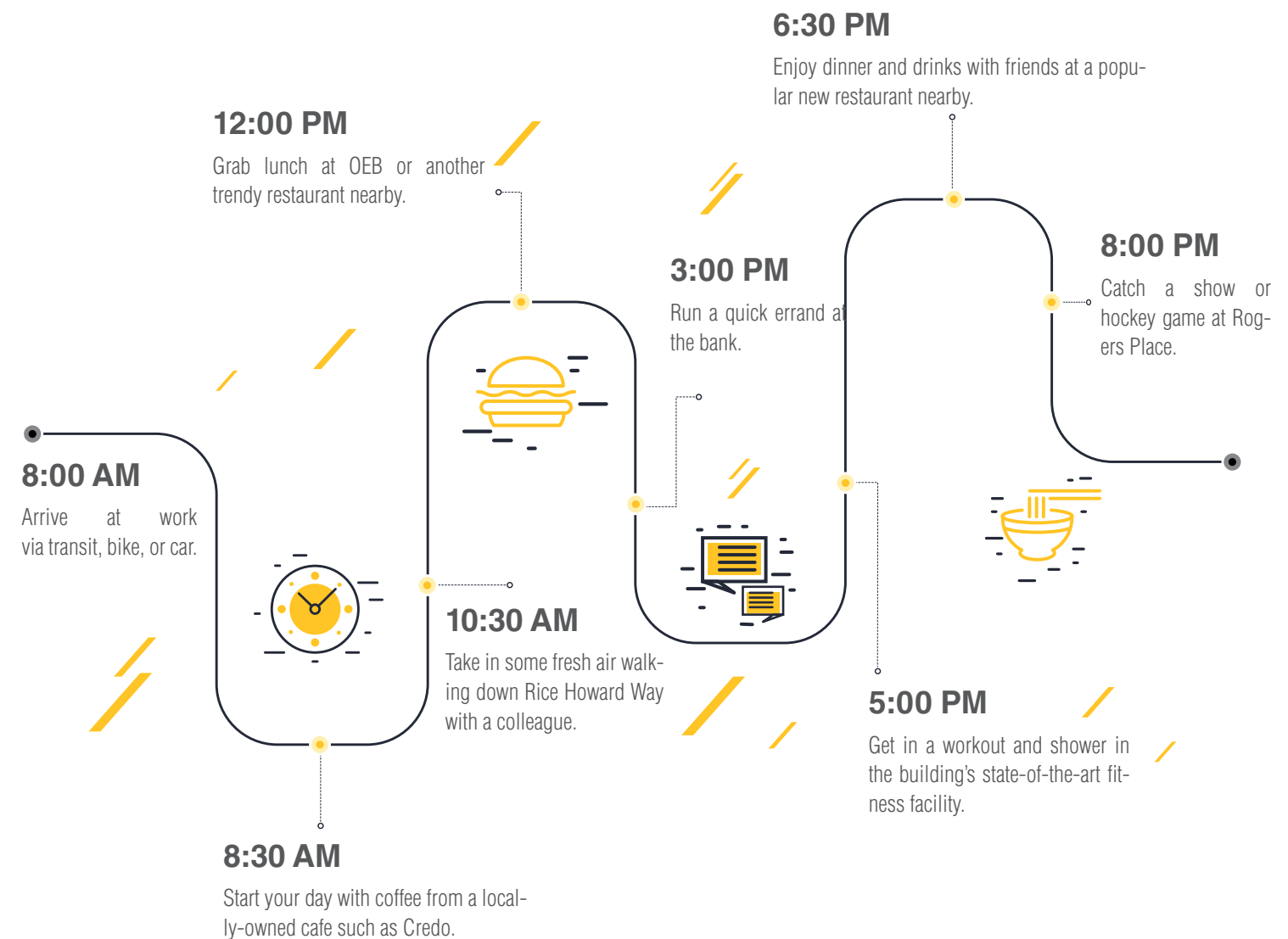
- Central downtown location
- Grand, attractive marble-finished lobby
- Pedway connections to the entire downtown core
- World class tenant amenities
- Premier signage opportunities along 101 Street
- Strong local ownership group
- Direct pedway access to Central LRT station

Enbridge Centre is unlike any other building in Edmonton, incorporating the historic Kelly and Ramsey Buildings where they have stood proudly for over a century into the base of a sleek, modern tower that has changed the face of Downtown Edmonton. Companies who are setting the course for Edmonton's business future have chosen Enbridge Centre as their new home, and time is running out to join them.

Join AA-Class Tenants Including:




YOUR DAY REIMAGINED




EXPERIENCE THE CULTURE

AT ENBRIDGE CENTRE

Your office should be more than just a place to work—it should enhance the lifestyle of you and your employees, and contribute to the creation of a culture and community that people love. Build on a larger community already within the Enbridge Centre as you and your staff enjoy all the amenities and perks the building has to offer:




Umbrella
Check-Out System




Book Swap
Program




State-of-the-Art
Golf Simulator



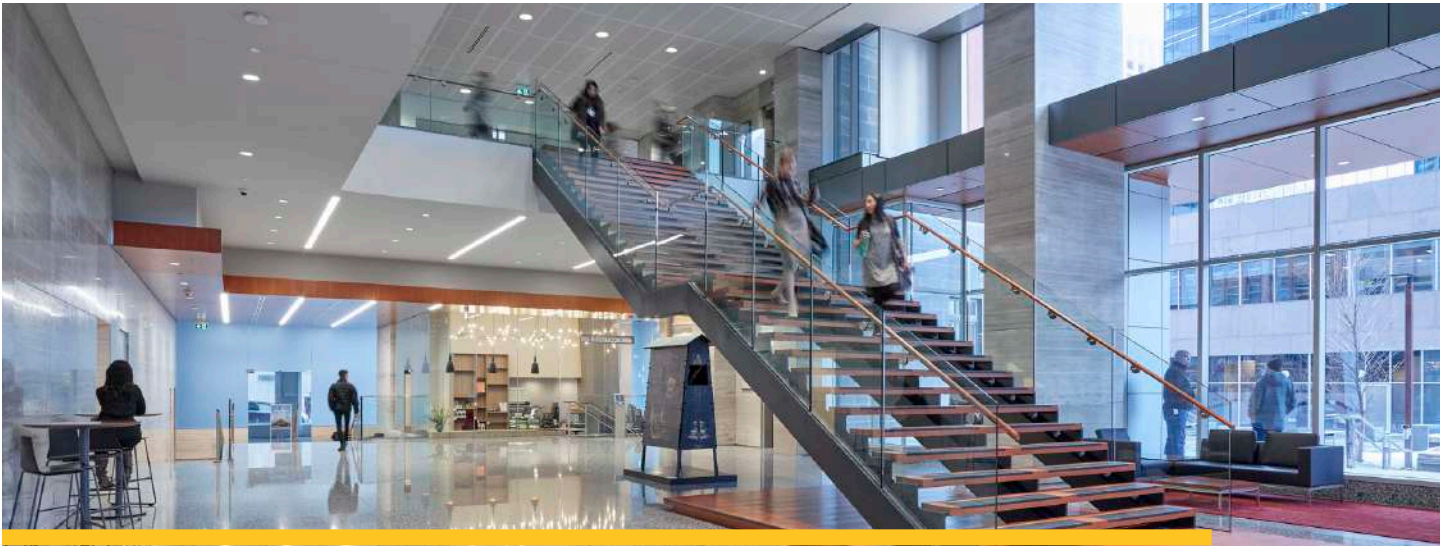
Bike Share
Program



Outdoor Plaza
Amenities



Tenant-Only Auto
Detailing Services



GRAND EXPECTATIONS

The marble-finished lobby of the building inspires feelings of grandeur, with a large feature staircase, displays of local art, high ceilings, and a large open area.

This is where connections are made, tenant appreciation events are held, and a community is built within the building.

The rooftop Urban Farm offers yearly vegetable harvests and tenants can enjoy honey from the rooftop Urban bees - Enbridge Centre's tiniest tenants!

- Enbridge Centre offers a number of unique amenities including:
- 24/7 on-site building security & safe walk program
 - Concierge service
 - Tenant-only bike-share program
 - Umbrella check-out service
 - State-of-the-art conference centre
 - Heritage Auto Detailing, tenant exclusive car detailing
 - Electric vehicle parking and charging
 - Platinum Partnerships



CONFERENCE CENTRE

Make a pitch, impress clients or host a training seminar in the fully wired conference centre on the 23rd floor. Complete with a kitchenette and multiple room sizes, most of your meeting needs can be serviced by the Conference Centre.

A FOCUS ON FITNESS

It's proven that the endorphins released by exercise can help to increase productivity and reduce stress in the workplace.

In addition to a state-of-the-art 8,000 square foot fitness centre, tenants also have exclusive access to top quality showers/locker rooms, towel service, private training, and fitness classes. For those days where you just need to get away, a golf simulator is available to help you escape to the world's best courses.



CONNECT WITH NATURE

Enjoy coffee meetings at the outdoor plaza located outside the south entrance of Enbridge Centre. Request a snack tray from the concierge and eat your lunch outside, or play a quick game of Connect 4 with a friend.

EASY RIDE

To encourage employee wellness, Enbridge Centre offers its tenants the option to sign out a bike through the Bike Share program. The building also offers secure, indoor bike racks and servicing stations—accessible only with a programmed key card.

A SENSE OF COMMUNITY

Enbridge Centre hosts several tenant appreciation events throughout the year, such as donut days, pretzel days, or seasonal celebrations such as St. Patrick's Day or Christmas Holidays.

LIVE, WORK, PLAY



FUEL PROVIDER

Whether for a quick break or a lunch meeting, some of Edmonton’s best coffee shops, quick dining establishments, and world-class amenities are either on-site or just a few steps away from Enbridge Centre.



QUICK CONNECTIONS

Enbridge Centre is connected to several buildings in the downtown core through pedways or underground connections, making traveling by foot easier, faster and warmer.



CONVENIENT COMMUTE

Getting to and from work is easy with the Downtown Bike Network, LRT lines and other transit options that can be found just outside the Enbridge Centre.



ENTERTAINMENT

Enjoy an evening at one of Edmonton’s premier facilities such as Rogers Place, Citadel Theatre, Churchill Square, the Art Gallery of Alberta, Royal Alberta Museum, and the renovated Stanley A. Milner Library.



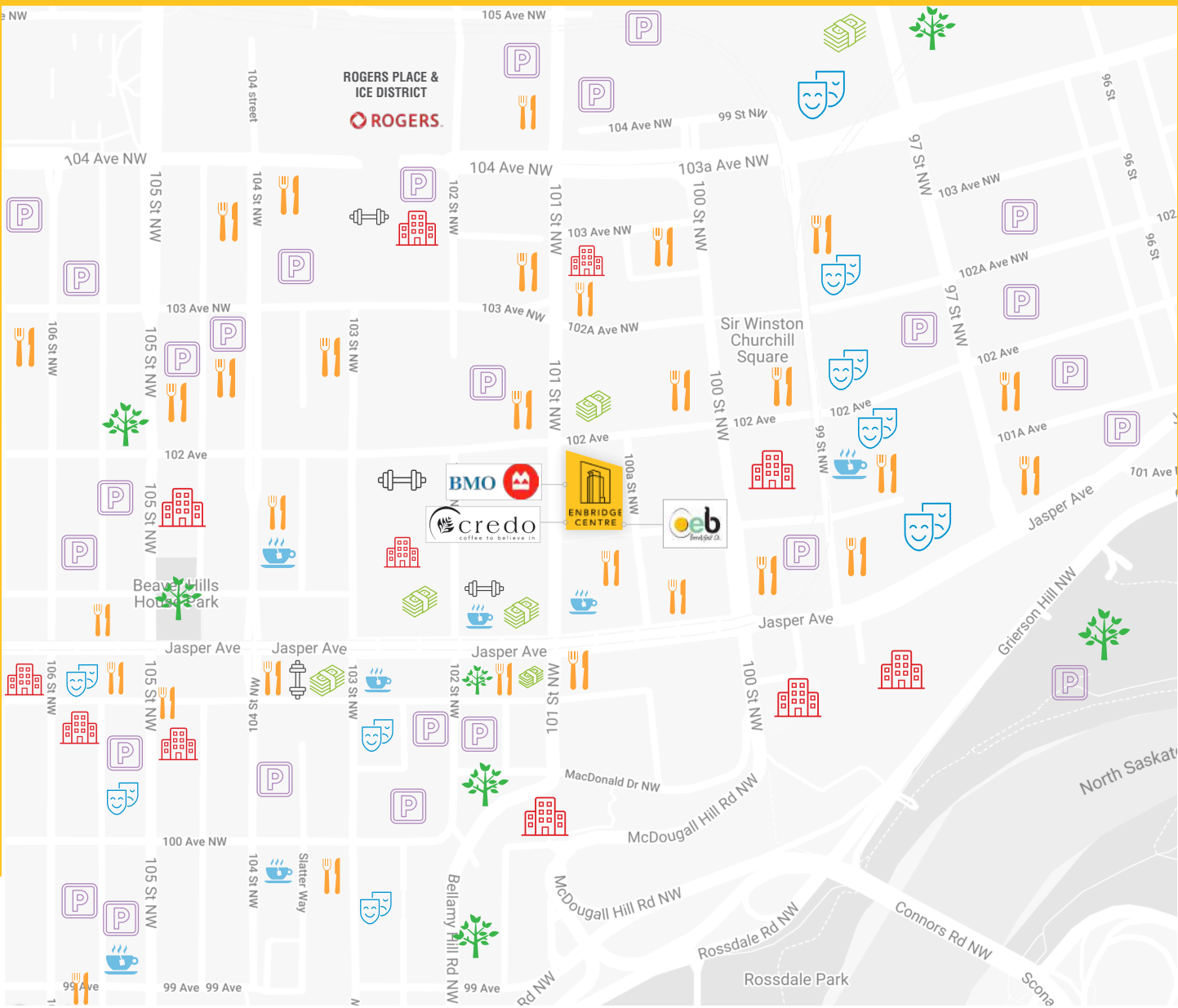
MOVERS AND SHAKERS

In addition to the building’s world-class fitness facility, tenants will be blocks away from a plethora of fitness options including GoodLife Fitness, Don Wheaton Family YMCA, Archetype, Hive Fit Co, and Champs Boxing.











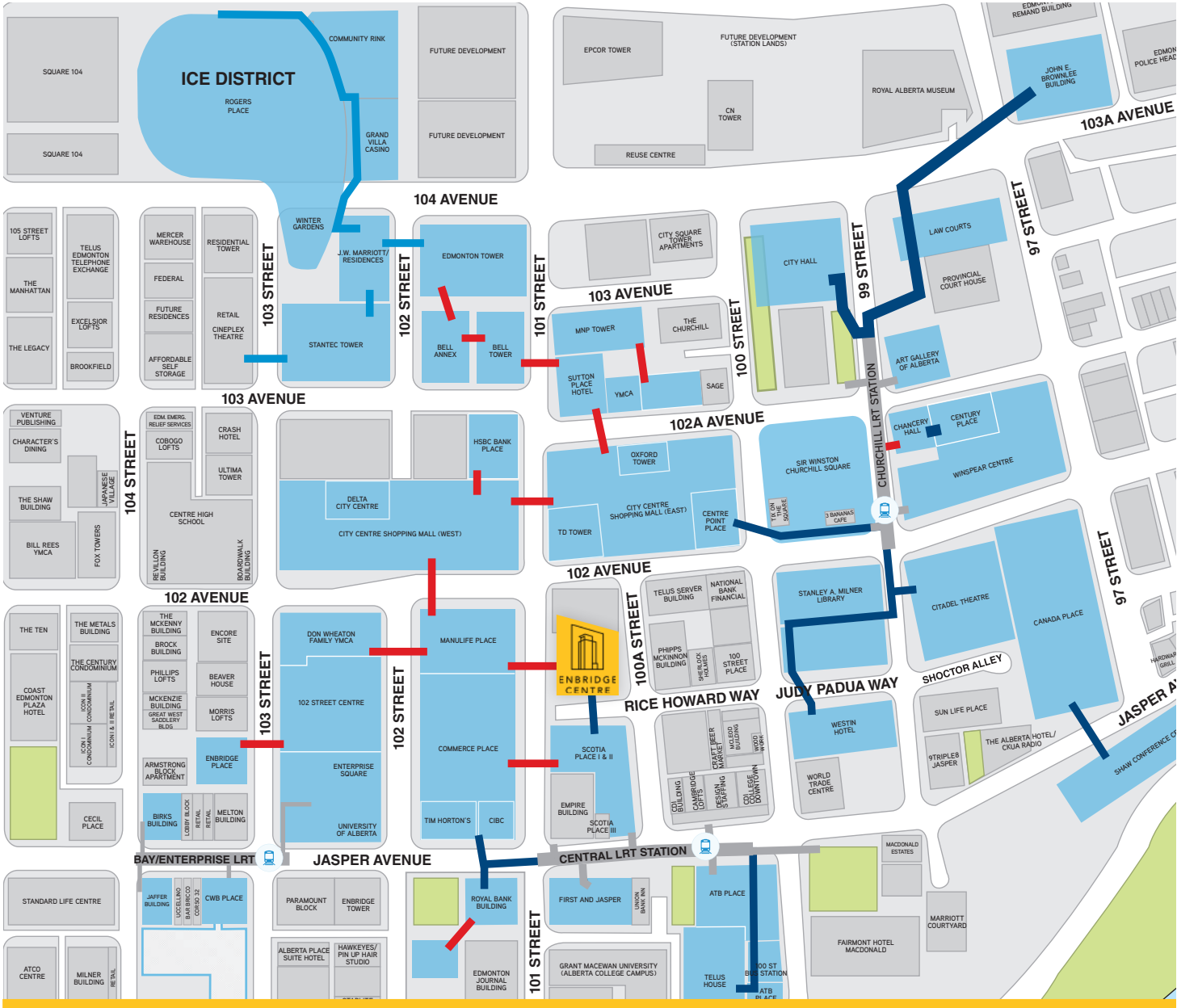
SOCIAL SPACES

Along with an open, welcoming lobby, Enbridge Centre is surrounded by pedestrian-friendly spaces including Rice Howard Way and an outdoor plaza located immediately outside the building.



LOCAL AMENITIES

- | | | |
|---|--|---|
|  DINING |  FITNESS STUDIOS |  GREEN SPACES |
|  COFFEE SHOPS |  BANKS |  PARKING |
|  HOTELS |  ENTERTAINMENT | |



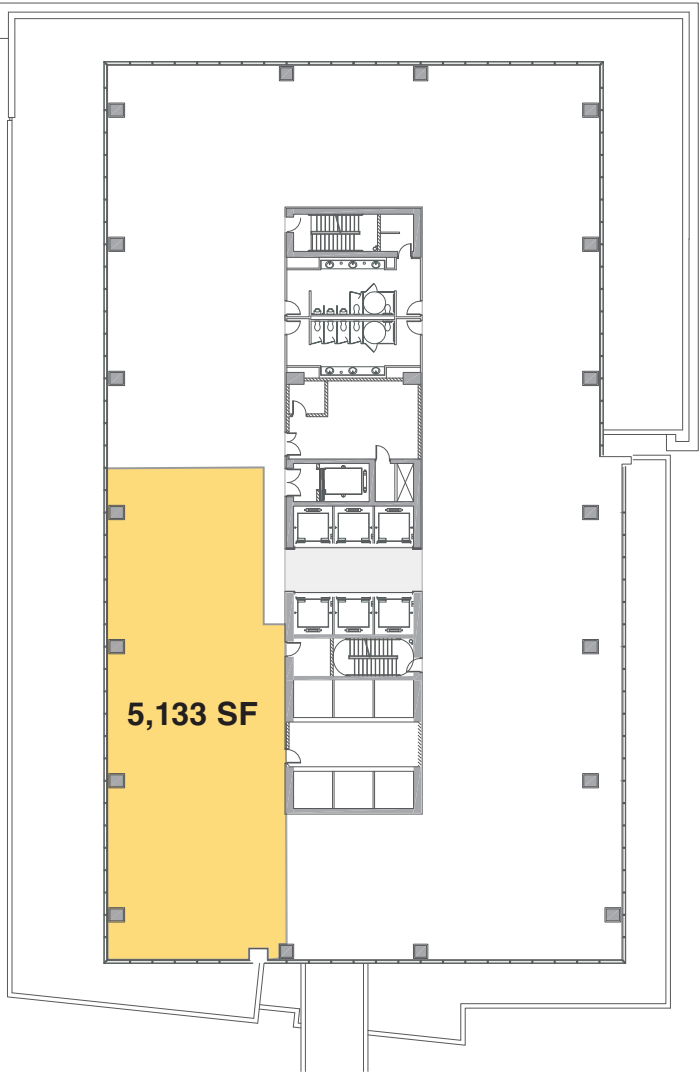
STAY CONNECTED

Designed for easy accessibility and faster commute by foot. Stay connected to several buildings in the downtown core through the use of the pedway system.

- BUILDINGS WITH PEDWAY ACCESS
- FUTURE ABOVE GROUND PEDWAY
- UNDERGROUND PEDWAY
- EXISTING ABOVE GROUND PEDWAY

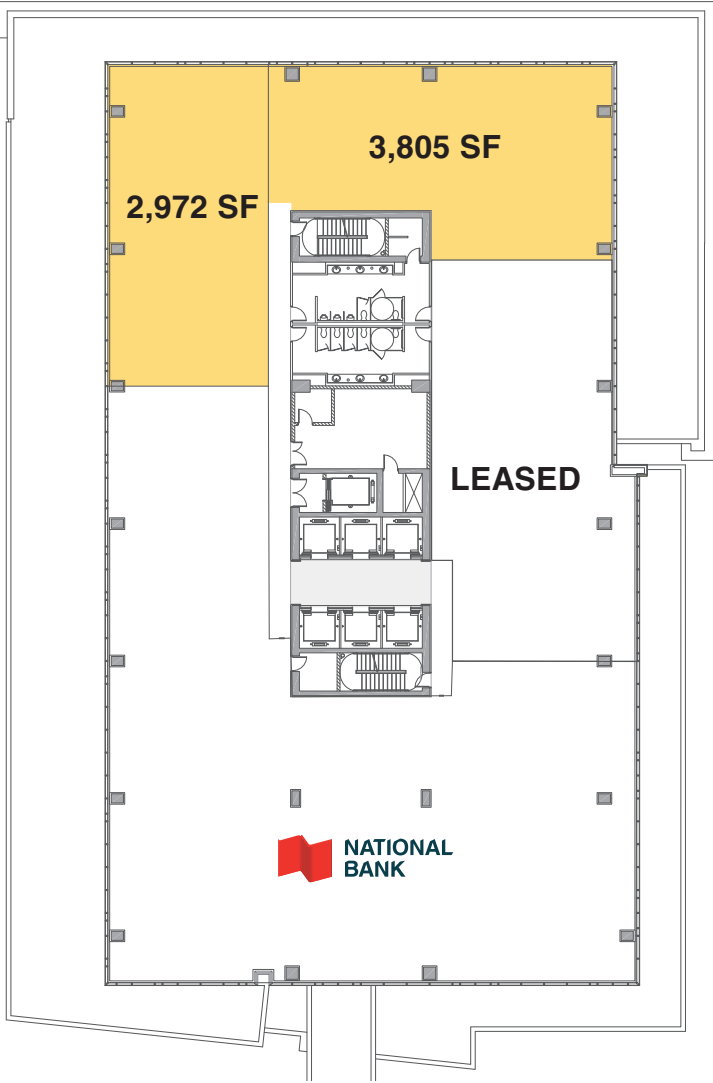
AVAILABILITIES | OFFICE

16th FLOOR
5,133 SF



- HIGHLIGHTS:**
- 5,133 square feet available
 - Available immediately

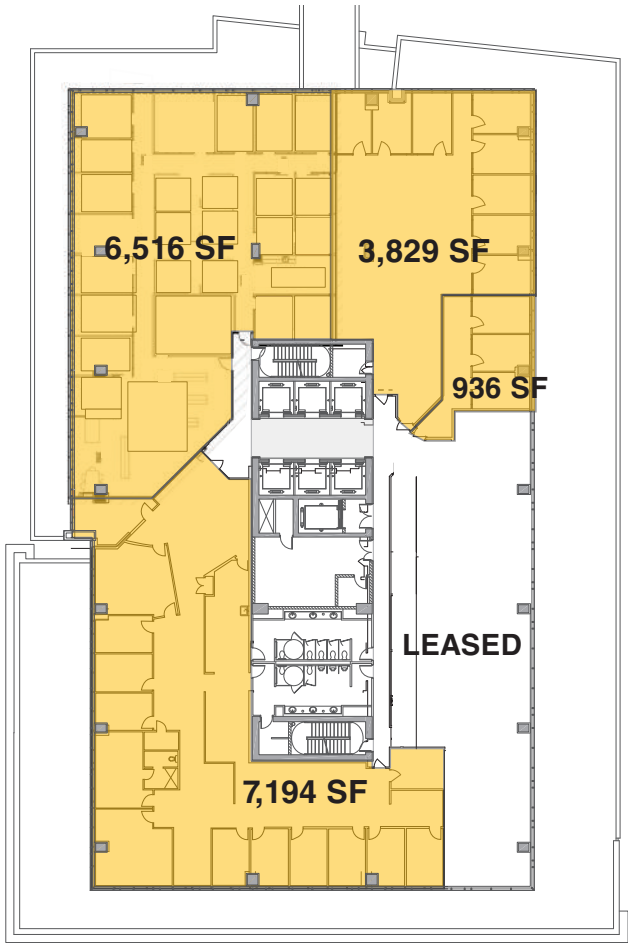
18th FLOOR
2,972 - 6,777 SF



- HIGHLIGHTS:**
- 2,972 to 6,777 square feet available
 - Space can be made contiguous
 - Available immediately

AVAILABILITIES | OFFICE

23rd FLOOR - MOVE-IN READY OPTIONS
936 - 18,475 SF



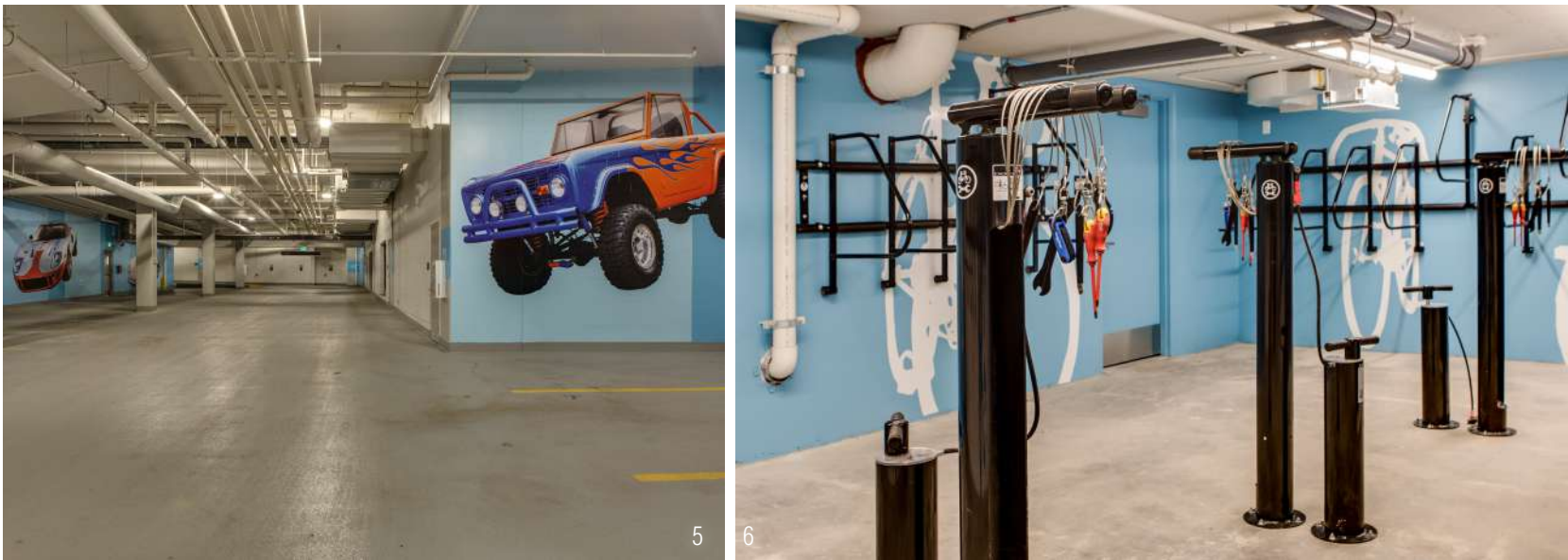
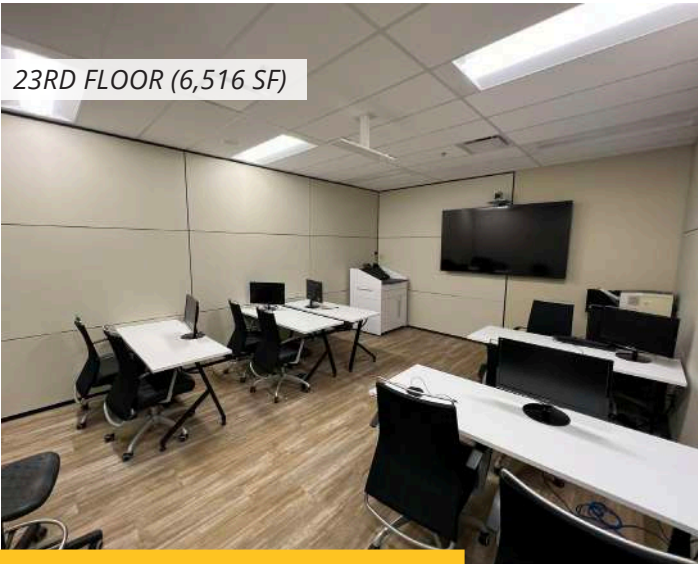
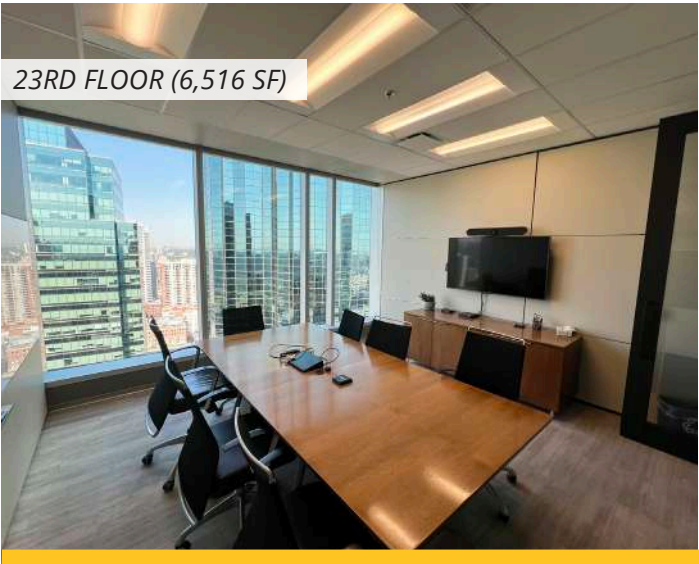
- 7,194 SF HIGHLIGHTS:**

 - 11 private offices
 - Open work areas
 - 2 boardrooms
 - Breakout room
 - Kitchenette
 - Reception area
- 6,516 SF HIGHLIGHTS:**

 - Available January 1, 2025
 - 13 private offices
 - Open work areas
 - 2 meeting rooms
 - Kitchenette
 - Server room
 - Storage room
- 3,829 SF HIGHLIGHTS:**

 - 8 private offices
 - Open work area
 - Boardroom
 - Kitchenette
 - Reception area
- 936 SF HIGHLIGHTS:**

 - 3 private offices



1 // Conference Centre 2 // Pedway 3 // Tenant Appreciation Events
4 // Building Exterior 5 // Secure Parking Garage 6 // Cycle Centre



Find your next space:

PHIL GOH

Senior Vice President
780 969 2989
phil.goh@colliers.com

TAYLOR RIAI

Vice President
780 969 3022
taylor.riai@colliers.com

IAN BRADLEY

Executive Vice President
780 969 2996
ian.bradley@colliers.com

FAHAD SHAIKH, CPA, CA

Senior Vice President
780 969 3008
fahad.shaiikh@colliers.com



JOHNDAY
DEVELOPMENTS



PANGMAN
DEVELOPMENT CORPORATION

Hines

COLLIERS MACAULAY NICOLLS INC.

2210 Manulife Place, 10180 - 101 Street | Edmonton, AB T5J 3S4

www.collierscanada.com

This document/email has been prepared by Colliers International for advertising and general information only. Colliers International makes no guarantees, representations or warranties of any kind, expressed or implied, regarding the information including, but not limited to, warranties of content, accuracy and reliability. Any interested party should undertake their own inquiries as to the accuracy of the information. Colliers International excludes unequivocally all inferred or implied terms, conditions and warranties arising out of this document and excludes all liability for loss and damages arising there from. This publication is the copyrighted property of Colliers International and /or its licensor(s). © 2025. All rights reserved. This communication is not intended to cause or induce breach of an existing listing agreement. Colliers Macaulay Nicolls Brokerage Inc. (Edmonton). *Personal Real Estate Corporation.