



► COMMERCIAL SPACE NOW AVAILABLE

AVAILABLE SPACE: Suite 175 | 68 Highfield St., Moncton, NB

#### LOCATION FACTS:



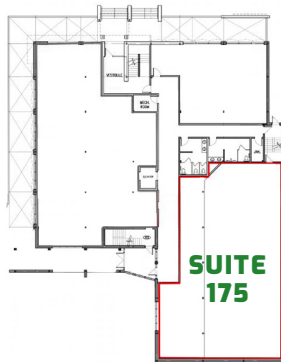
Centrally Located



Free Parking On & Off -Site

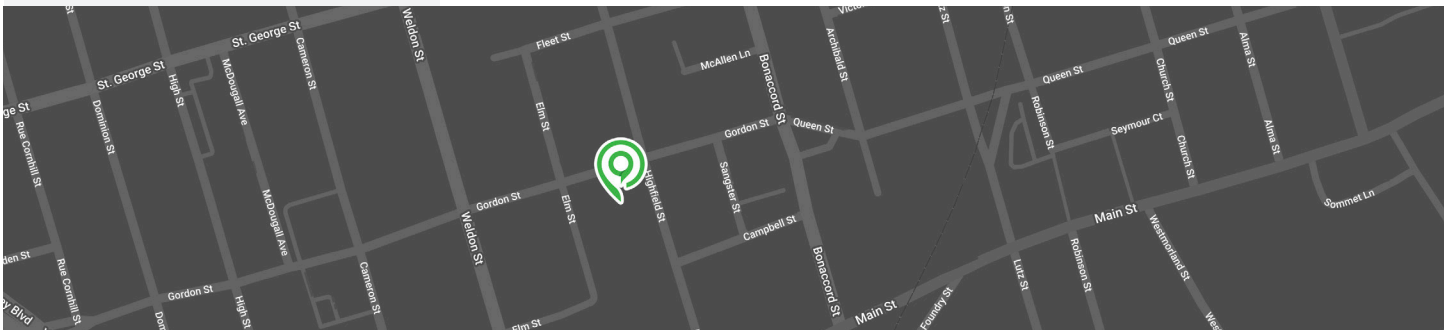


On Bus Route with Stop  
Directly Outside the Building



#### BUILDING SUMMARY:

PROPERTY TYPE: Multi-tenant office building  
ADDRESS: 68 Highfield Street  
COMMUNITY: Downtown Moncton  
SIZE: +/- 4,582 sq.ft.  
SPACE: Suite 175  
INTERSECTION: Corner of Gordon & Highfield Streets



OLD YMCA BUILDING - SUITE 175 // 68 Highfield St., MONCTON, NB



**Patrick Gillespie**  
(506) 866-0084  
pgillespie@theashfordgroup.com



**Ryan Gillespie**  
(506) 874-5832  
rgillespie@theashfordgroup.com



**ashford**  
PROPERTIES | *Space to Grow*