

# New Landmark Development at Front & Spadina



**Confirmed  
200,000 sq. ft.  
available in Q4 2015**

Cushman & Wakefield is pleased to announce the development of a new state of the art office building, scheduled to open in late 2015.

The 412,000 sq. ft. building will be located at the north-west corner of Front Street and Spadina Avenue.

It will be an eighteen-story multi-tenant building, linking to a six-story podium that will be the new home of The Globe and Mail.

The building is being designed to LEED Gold standards and integrates leading edge sustainable and green building design principles. The design forms a recognizable gateway into Toronto, in a rapidly transforming neighborhood.

## Key Details:

- Total Building Size: 412,000 sq.ft.
- Available Contiguous Block – 200,000 sq.ft. (Floors 8-18)
- Typical Floor Plate – 18,000 sq.ft.
- Building Completion Date – Q4 2015 (Tenant Fixturing Prior)
- Ample parking @1 / 2,800 sq.ft. leased
- Pricing – Call To Discuss

## Features:

- Landmark building design by KPMB Architects
- Designed to LEED Gold Standards
- Great high-rise views in all directions
- Quick car access from the Gardiner
- Underground vehicle and bicycle parking
- On-site restaurant, rooftop terraces, green spaces and TTC at doorstep
- Great amenities in a prime King West location



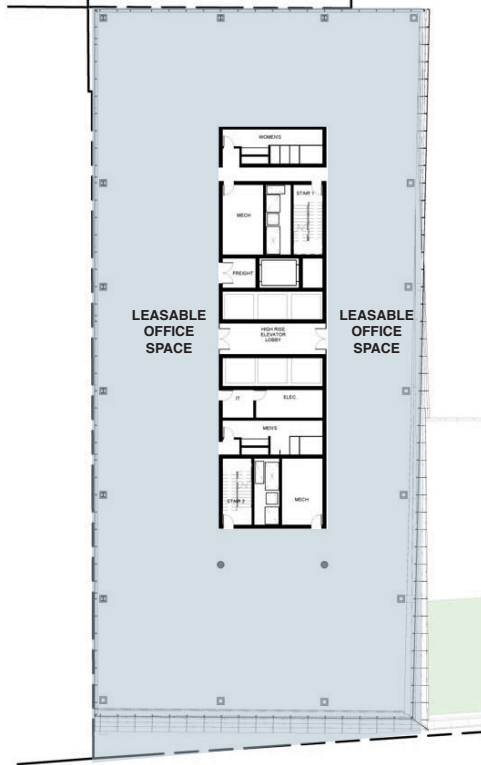
Derek Woodburn  
Vice President, Office Leasing\*  
416-359-2350  
derek.woodburn@ca.cushwake.com

Ted Reilly  
Associate Vice President, Office Leasing\*  
416-359-2485  
ted.reilly@ca.cushwake.com

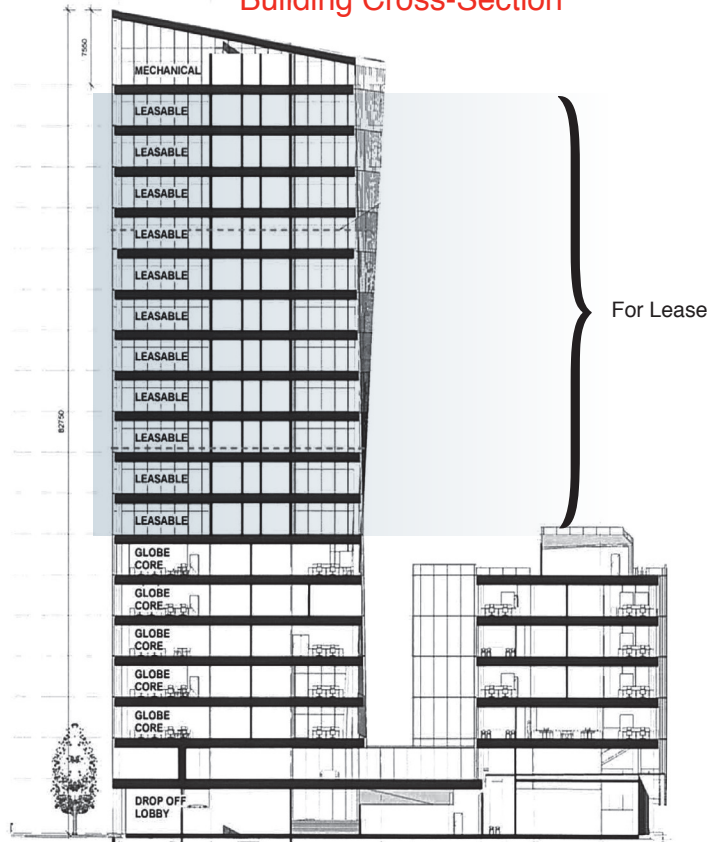
The information contained herein has been provided to Cushman & Wakefield Ltd. by others. We do not warrant its accuracy. Subject to availability, rental rates subject to change without notice. E.&O.E. \*Sales Representative.

# New Landmark Development at Front & Spadina

Typical Floor Plan  
Example: 10<sup>th</sup> Floor



Building Cross-Section



Prime King West Location

Subway line   
Streetcar line 



Derek Woodburn  
Vice President, Office Leasing\*  
416-359-2350  
derek.woodburn@ca.cushwake.com

Ted Reilly  
Associate Vice President, Office Leasing\*  
416-359-2485  
ted.reilly@ca.cushwake.com

The information contained herein has been provided to Cushman & Wakefield Ltd. by others. We do not warrant its accuracy. Subject to availability, rental rates subject to change without notice. E.&O.E. \*Sales Representative.