

FOR LEASE

CBRE

1050-1051 BAXTER ROAD

OTTAWA, ON

UNIT 22A | 9,209 SQ. FT.

- Large warehouse with ground and second floor office space
- 2 dock level doors
- Kitchenette



*Outline Not to Scale



LOCATED IN WELL KNOWN INDUSTRIAL PARK



ENCLOSED OFFICE SPACES



IMMEDIATE AVAILABILITY

MANAGED BY



CONTACT

Steve Piercey*

Vice President

+1 613 691 2100

steve.piercey@cbre.com

Michael McMurtry

Sales Representative

+1 613 691 2135

michael.mcmurtry@cbre.com

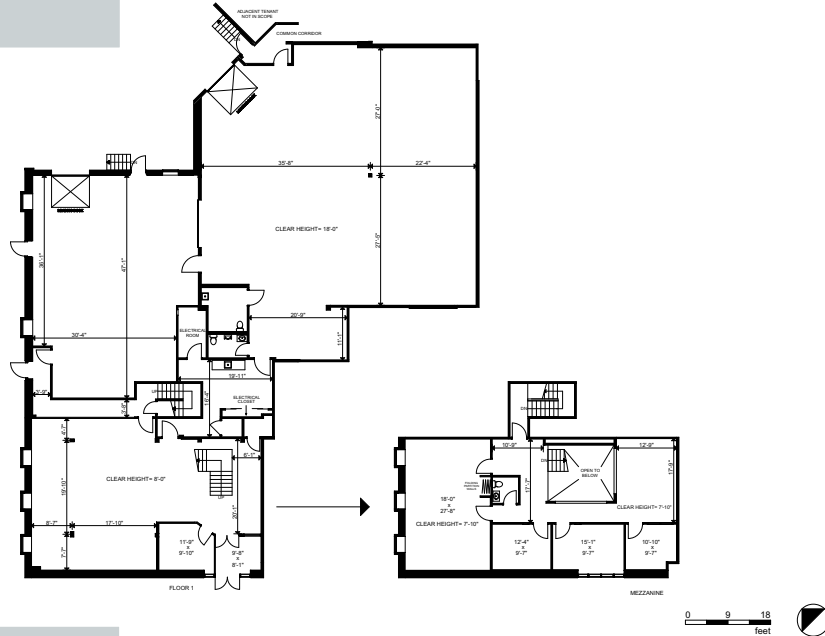
*Sales Representative

UNIT DETAILS

1050-1051 BAXTER ROAD, OTTAWA, ON

UNIT #	TOTAL SQ. FT.	LEASE RATE (PSF) NET	ADDITIONAL RENT* (PSF)	ESTIMATED MONTHLY RENT
22A	9,209	\$16.00	\$7.24 (2023 estimate)	\$17,834.76 *Excludes HST & Utilities

FLOOR PLAN



PHOTOS



Steve Piercey*
 Vice President
 +1 613 691 2100
 steve.piercey@cbre.com

Michael McMurtry
 Sales Representative
 +1 613 691 2135
 michael.mcmurtry@cbre.com

MANAGED BY


*Sales Representative

CBRE Limited, Brokerage | 340 Albert Street, Suite 1900 | Ottawa, ON K1R 7Y6 | T +1 613 782 2266 | F +1 613 782 2296 | www.cbre.ca

This disclaimer shall apply to CBRE Limited, Real Estate Brokerage, and to all other divisions of the Corporation; to include all employees and independent contractors ("CBRE"). The information set out herein, including, without limitation, any projections, images, opinions, assumptions and estimates obtained from third parties (the "Information") has not been verified by CBRE, and CBRE does not represent, warrant or guarantee the accuracy, correctness and completeness of the Information. CBRE does not accept or assume any responsibility or liability, direct or consequential, for the Information or the recipient's reliance upon the Information. The recipient of the Information should take such steps as the recipient may deem necessary to verify the Information prior to placing any reliance upon the Information. The Information may change and any property described in the Information may be withdrawn from the market at any time without notice or obligation to the recipient from CBRE. CBRE and the CBRE logo are the service marks of CBRE Limited and/or its affiliated or related companies in other countries. All other marks displayed on this document are the property of their respective owners. All Rights Reserved. Mapping Sources: Canadian Mapping Services canadamapping@cbre.com; DMTI Spatial, Environics Analytics, Microsoft Bing, Google Earth

