

AVISON  
YOUNG

# Office For Lease



**7,873 SF AVAILABLE**

## **140 Renfrew Drive** **Markham, ON**

**Eva Destunis\***

Principal, Senior Vice President  
905 968 8006  
eva.destunis@avisonyoung.com

**Ryan Hood\*, SIOR**

Principal, Senior Vice President  
905 968 8007  
ryan.hood@avisonyoung.com

\*Sales Representative

**140 Renfrew Drive  
Markham, ON**

**Office Space For Lease**

## Suite 110

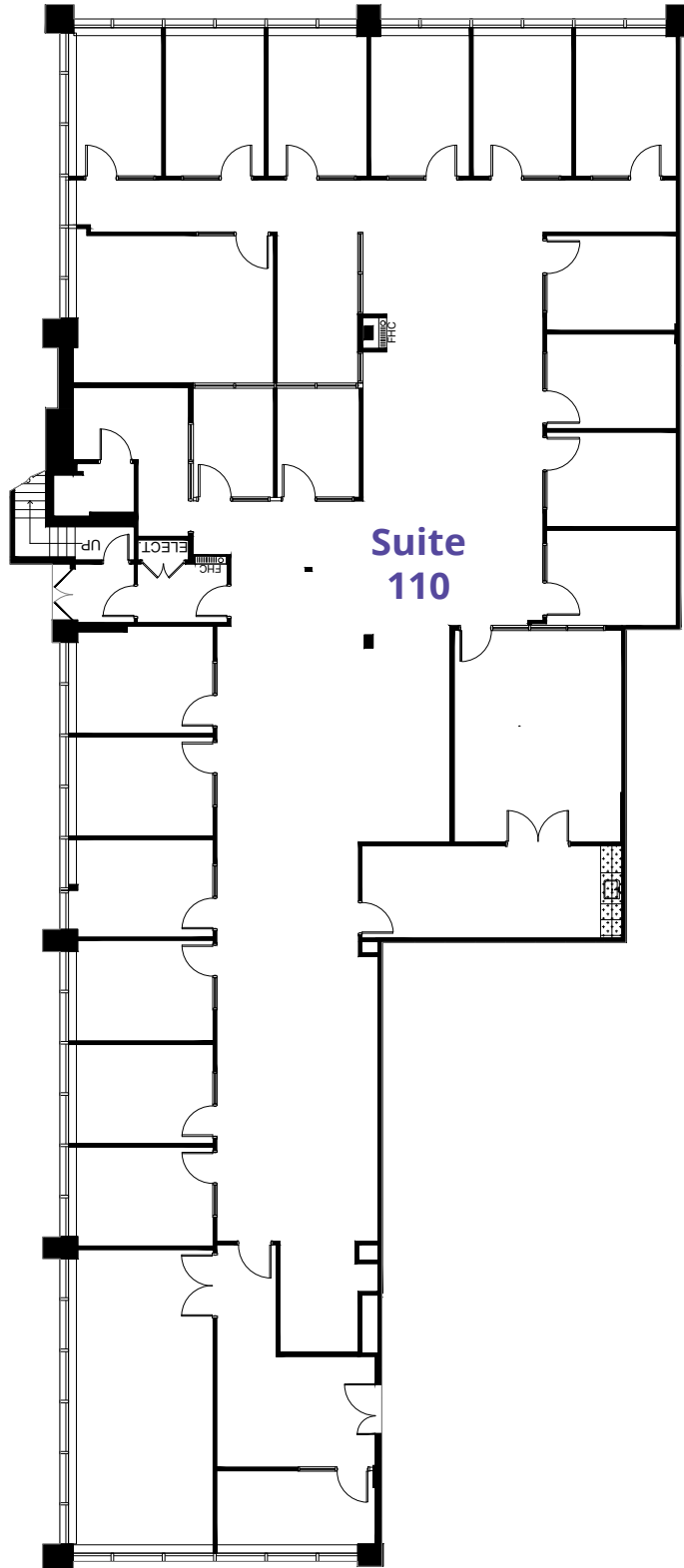
<b>SIZE</b>	7,873 SF
<b>ASKING RATE</b>	\$15.00 psf net
<b>ADDITIONAL RENT</b>	\$14.60 (2026)
<b>AVAILABILITY</b>	Immediately

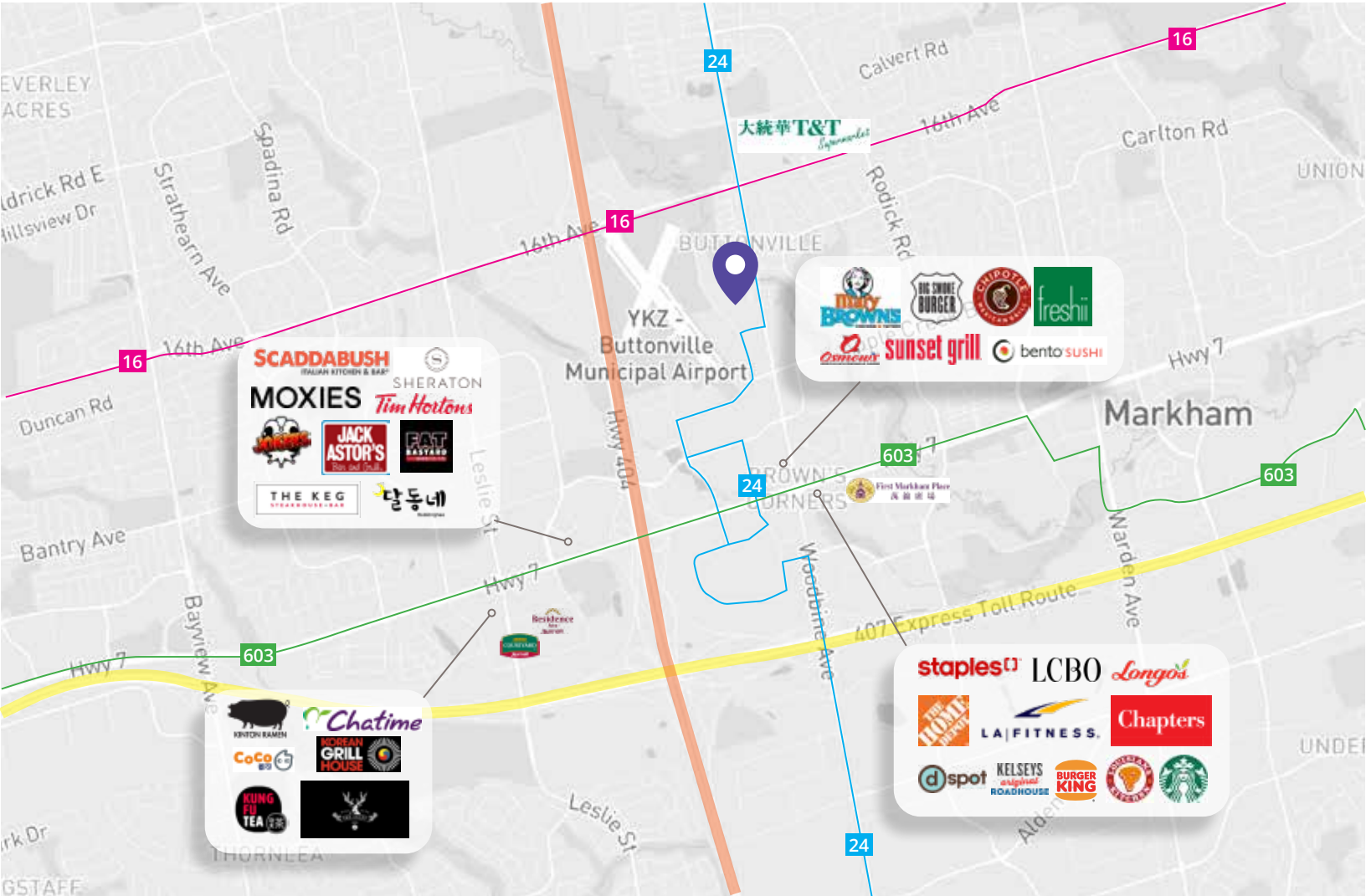
## Highlights

- Ground floor suite with three walls of floor to ceiling windows
- Direct suite access from lobby
- California style, low rise office campus
- Mix of private offices & open space, kitchenette, exterior patio area
- Close proximity to many amenities & transit
- Easy access to Highways 404, 7 and 407



Floor Plan





**Amenities within 5km**

**371**

RESTAURANTS & CAFES

**408**

RETAIL

**15**

HOTELS

**12**

FITNESS CENTRES



**61**

BANKS

**21**

GAS STATIONS

**Transit**

-  Woodbine
-  16th Avenue
-  Viva Purple

**Drive Times**

- 4 Minutes** to Highway 404 (2.0 km)
- 5 Minutes** to Highway 407 (2.1 km)
- 10 Minutes** to Highway 401 (12.1 km)
- 22 Minutes** to Downtown Toronto (30.0 km)
- 30 Minutes** to Pearson Airport (37.7 km)

**Avison Young Commercial Real Estate Services, LP, Brokerage**  
55 Commerce Valley Drive West, Suite 501, Markham, ON L3T 7V9  
Office +1 905 474 1155 Fax +1 905 886 5744 [avisonyoung.ca](http://avisonyoung.ca)

© 2026 Avison Young Commercial Real Estate Services, LP, Brokerage. Information contained herein was obtained from sources deemed reliable and, while thought to be correct, have not been verified. Avison Young does not guarantee the accuracy or completeness of the information presented, nor assumes any responsibility or liability for any errors or omissions therein.



Platinum member