

Office | For Lease

CBRE

2180 Steeles Ave W

Vaughan, ON


Move-in Ready Office Space for Lease




Property Details

Location	Steeles Avenue W / Keele Street
Availability	Suite 305: 4,741 sq. ft. (Divisible to approximately 3,228 sq. ft. and 1,513 sq. ft.)
Net Rent	\$12.50 net per sq. ft. per annum for year 1 with escalations
Additional Rent	\$10.59 per sq. ft. per annum (2025 estimate) Includes hydro, utilities and common area and in-suite janitorial services


Highlights



→ Built out and move-in ready




→ Walking distance to TTC Subway Station



→ Abundant free surface parking



→ On-site property management



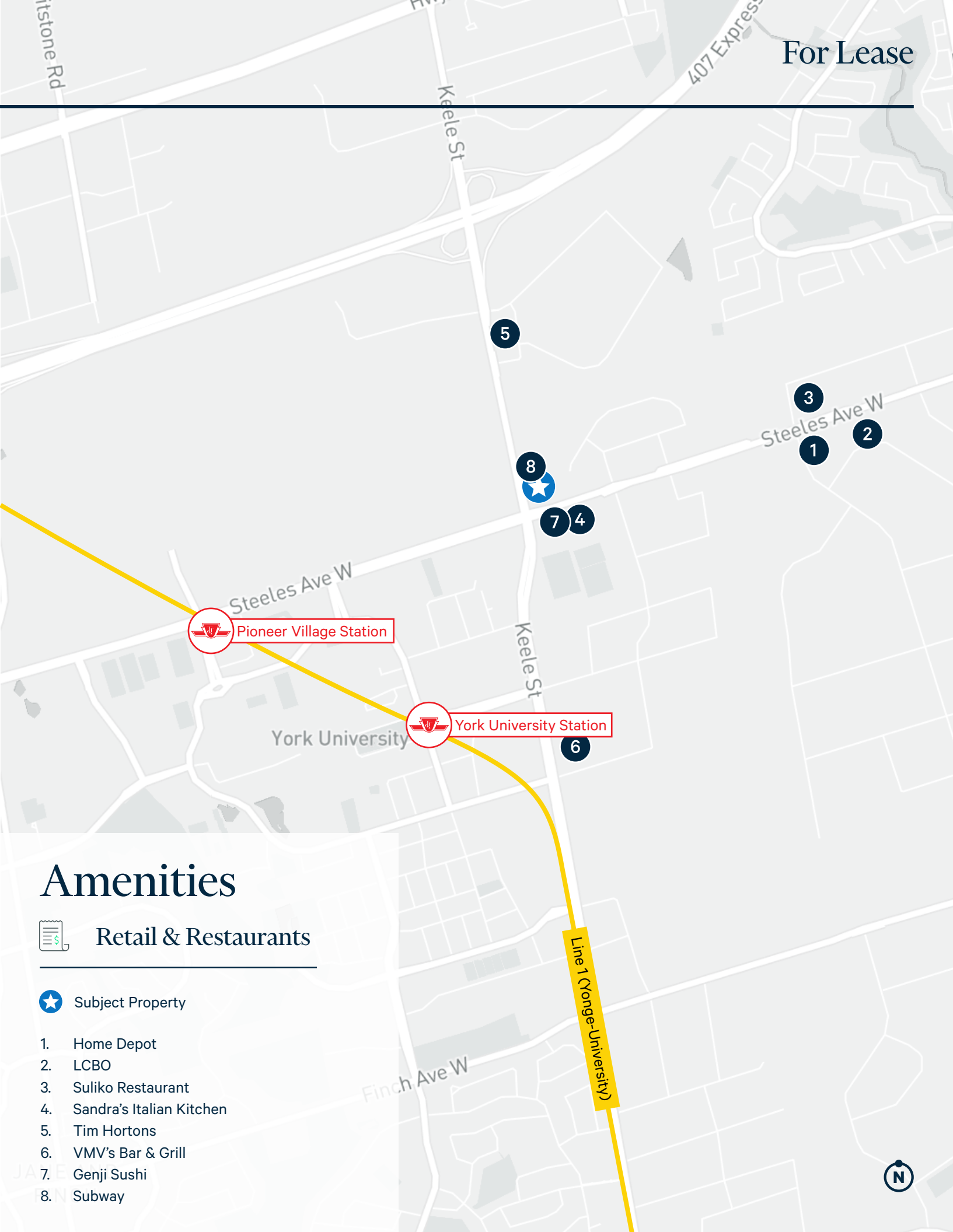
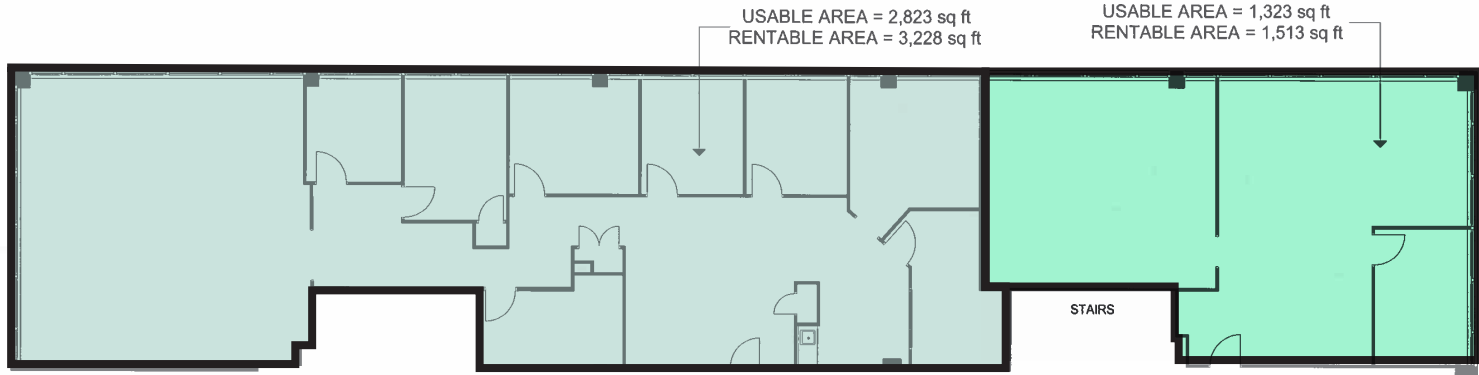
→ Amenity rich business square with a pharmacy, restaurants and dentist office



Photos



Floorplan



Amenities

Retail & Restaurants

- ★ Subject Property
- 1. Home Depot
- 2. LCBO
- 3. Suliko Restaurant
- 4. Sandra's Italian Kitchen
- 5. Tim Hortons
- 6. VMV's Bar & Grill
- 7. Genji Sushi
- 8. Subway

2180 Steeles Ave W
Vaughan | ON

Office | For Lease



Contact Us

Craig Williamson, MBA*
Senior Vice President
+1 416 495 6267
craig.williamson@cbre.com

Jason Kelly*
Sales Associate
+1 416 495 6282
jason.kelly@cbre.com

Gary Williamson*
Senior Vice President
+1 416 495 6247
gary.williamson@cbre.com

*Sales Representative **Broker | All Outlines Are Approximate | CBRE Limited, Brokerage | 2005 Sheppard Ave. E., #800, Toronto, ON M2J 5B4

This disclaimer shall apply to CBRE Limited, Real Estate Brokerage, and to all other divisions of the Corporation; to include all employees and independent contractors ("CBRE"). The information set out herein, including, without limitation, any projections, images, opinions, assumptions and estimates obtained from third parties (the "Information") has not been verified by CBRE, and CBRE does not represent, warrant or guarantee the accuracy, correctness and completeness of the Information. CBRE does not accept or assume any responsibility or liability, direct or consequential, for the Information or the recipient's reliance upon the Information. The recipient of the Information should take such steps as the recipient may deem necessary to verify the Information prior to placing any reliance upon the Information. The Information may change and any property described in the Information may be withdrawn from the market at any time without notice or obligation to the recipient from CBRE. CBRE and the CBRE logo are the service marks of CBRE Limited and/or its affiliated or related companies in other countries. All other marks displayed on this document are the property of their respective owners. All Rights Reserved. Mapping Sources: Canadian Mapping Services canadamapping@cbre.com; MapPoint, DMTI Spatial, Environics Analytics, Microsoft Bing, Google Earth-