

FOR LEASE

UP TO 9,055 SF
AVAILABLE



27
MOBILE
DRIVE

TORONTO

OVERVIEW

27 Mobile Drive is an excellent standalone flex office opportunity.

Located close to downtown Toronto and major highways, it provides the unique opportunity for a tenant to command the presence of a high-end character building, while have the flexibility of a portion of the facility to be manufacturing with loading capabilities.

FEATURES

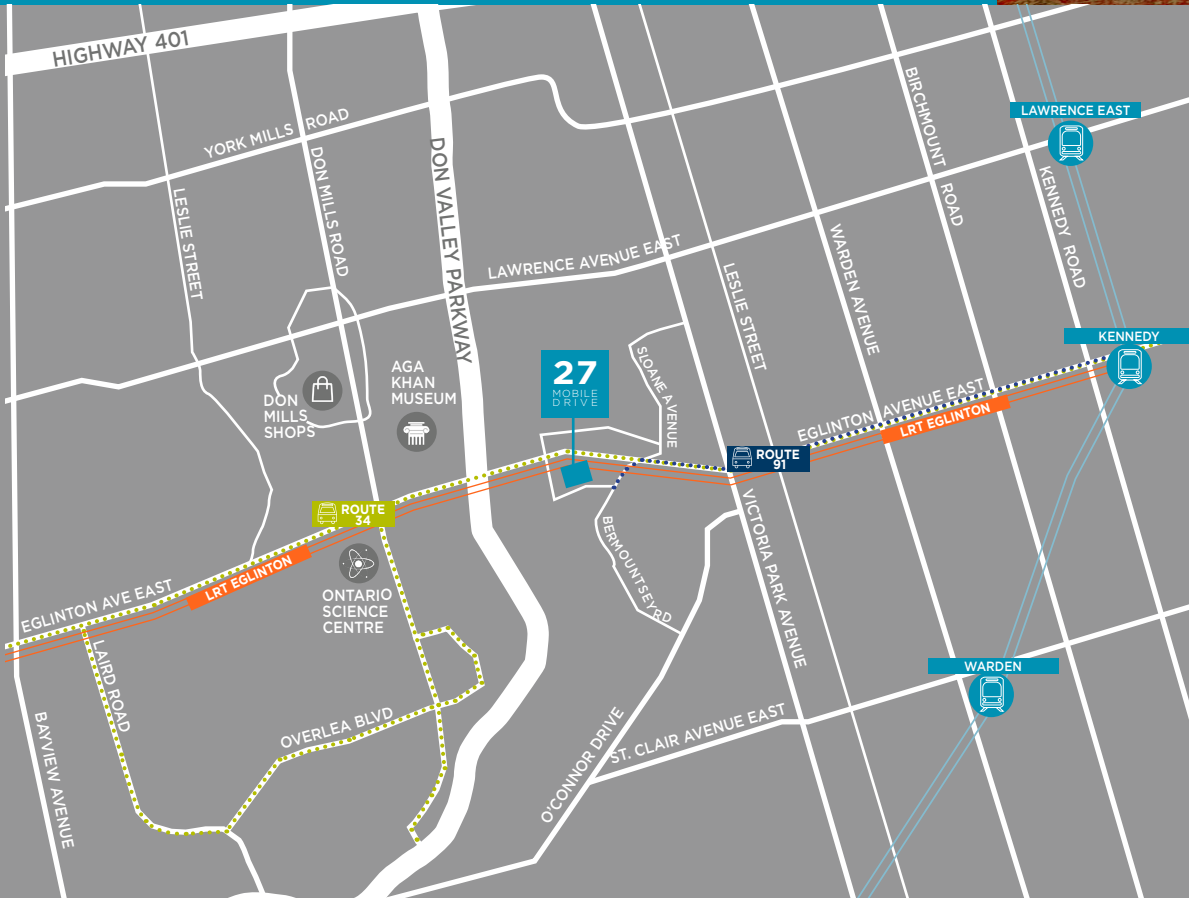
- Available Space:** 9,055 sf
- Net Rent:** Call Listing Agents
- Additional Rent:** \$7.61 psf (2021 est.)
- Occupancy:** Immediately
- Parking Ratio:** 1/900 sf

HIGHLIGHTS

- Character flex office opportunity
- Building signage available
- Loading available
- Close to major highways
- 14 ft ceilings



TRANSIT MAP



27
MOBILE
DRIVE

TORONTO



DEMOGRAPHICS



2 MINS
TO BUS
ROUTE

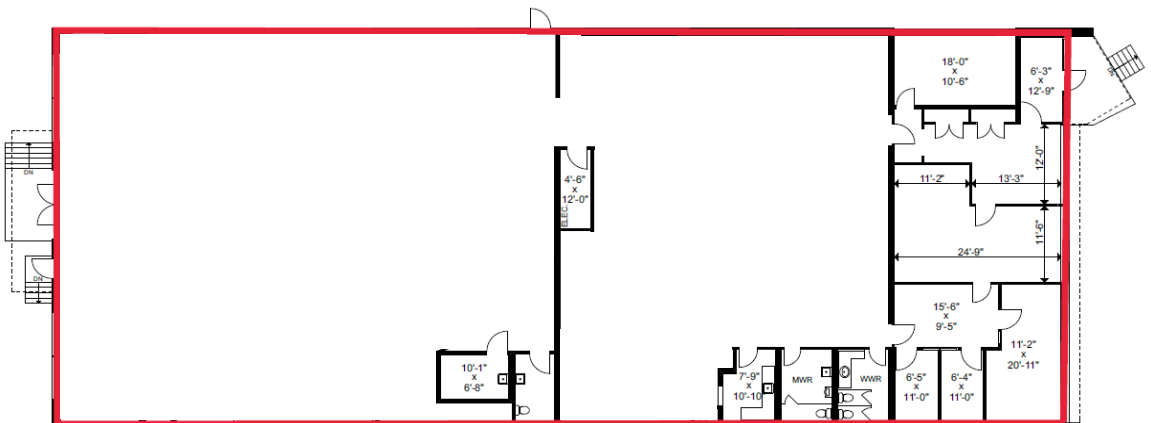


17 MINS
TO TTC SUBWAY
STATION



2 MINS
TO DON VALLEY
PARKWAY

FLOOR PLAN



27
MOBILE
DRIVE

TORONTO



CONTACT

Alan Rawn*
Senior Vice President
416 359 2440
alan.rawn@cushwake.com

Michael Scace*
Executive Vice President
416 359 2456
michael.scace@cushwake.com

Lauren Luchini*
Associate Vice President
416 359 2553
lauren.luchini@cushwake.com

Cushman & Wakefield ULC, Brokerage
161 Bay Street, Suite 1500
Toronto, ON M5J 2S1
cushmanwakefield.com



No warranty or representation, expressed or implied, is made as to the accuracy of the information contained herein, and same is submitted subject to errors, omissions, change of price, rental or other conditions, withdrawal without notice, and to any specific listing condition, imposed by our principals. * Sales Representative