



7405 TRANSCANADIENNE SAINT-LAURENT (QUÉBEC)

BUREAU - À LOUER
OFFICE - FOR LEASE

JUSQU'À 17 500 PI. CA. - UP TO 17 500 SQ. FT.

- **Transport en commun accessible** | *Easy acces to public transport*
- **Stationnement intérieur** | *Indoor parking*
- **Restaurant intérieur** | *Indoor restaurant*
- **Près du centre d'achat place vertu** | *Next to the Place Vertu mall*
- **Excellente visibilité à partir de l'autoroute** | *Exellent visibility from the highway*

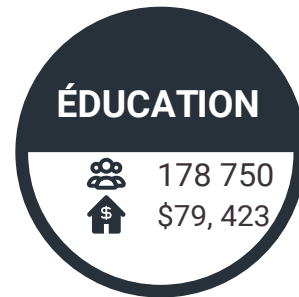
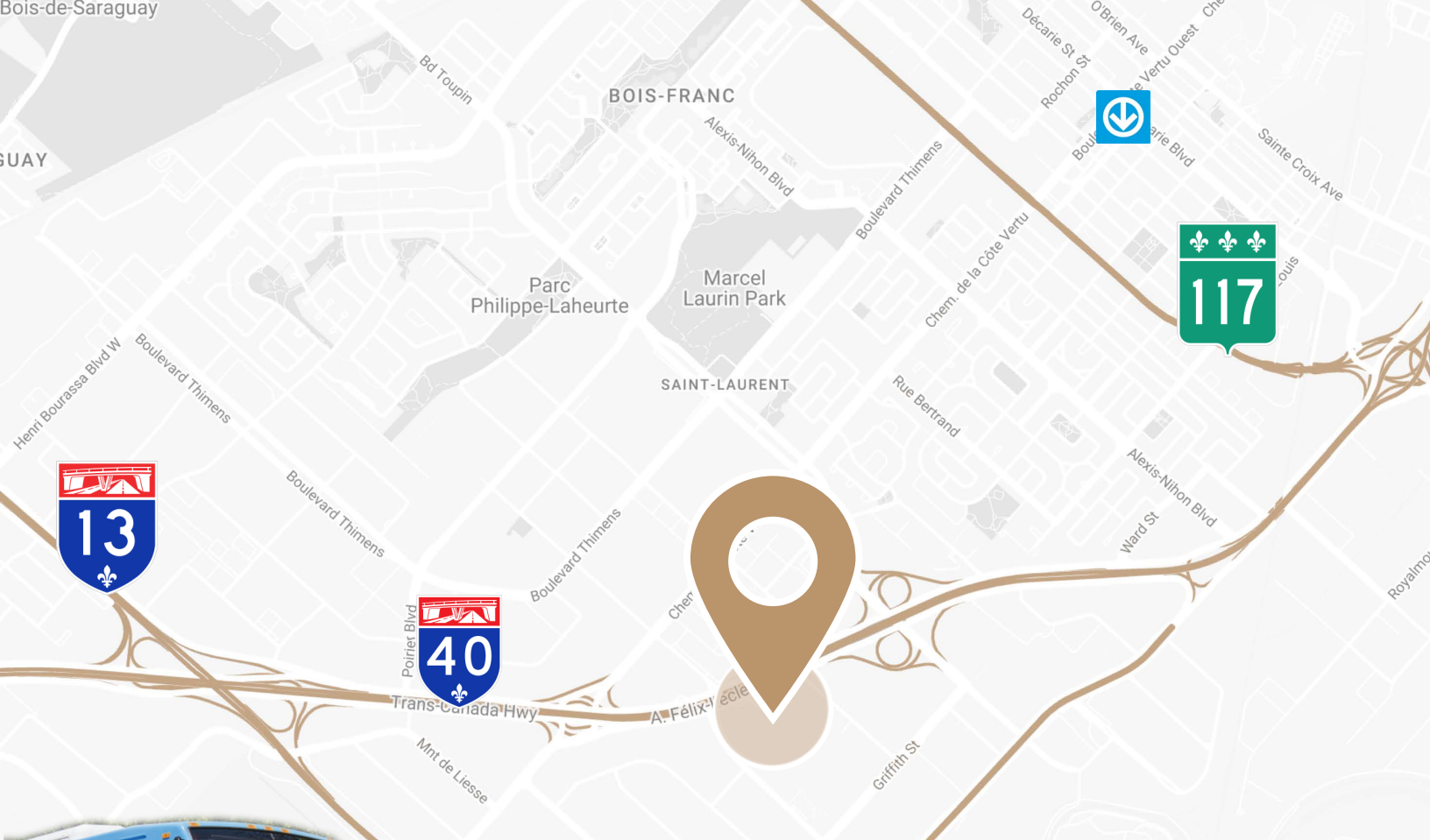


BRASSWATER

245, avenue Victoria,
Suite 801
Westmount, Qc | H3Z 2M6
T: +1 514 535 4444
www.brasswater.ca



Zonage Zoning	Bureau Office
Surfaces disponibles (pi²) Available Areas (sq. ft.)	30 581
Étage Floor	4
Stationnement intérieur Interior Parking	28
Stationnement extérieur Exterior Parking	288



TRANSPORT

ACCÈS FACILE À L'AUTORO ET/AND EASY HIGHWAY ACCESS

SERVICES ET COMMODITÉS | SERVICES AND AMENITIES

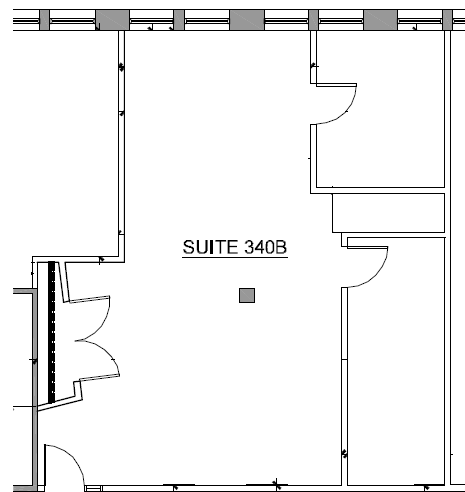
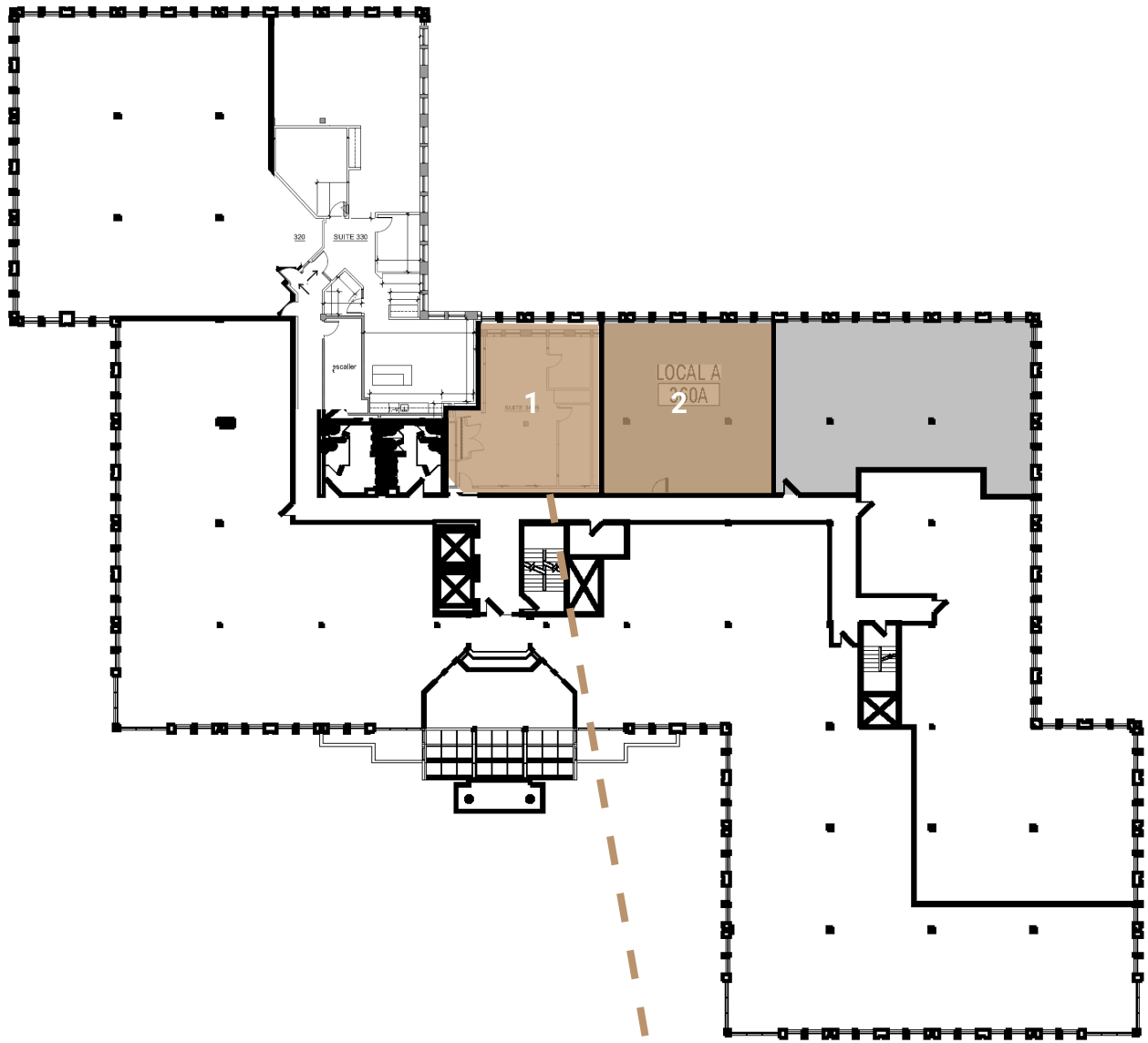
BANQUES | BANKS RESTAURANTS COMMERCE | SHOPS HOTELS

- DESJARDINS
- CIBC
- TD CANADA TRUST
- SCOTIA BANK

- STARBUCKS
- SUBWAY
- LA CAGE
- MCDONALD'S
- NOTRE BOEUF-DE-GRÂCE
- TIM HORTON'S
- SUSHI SHOP

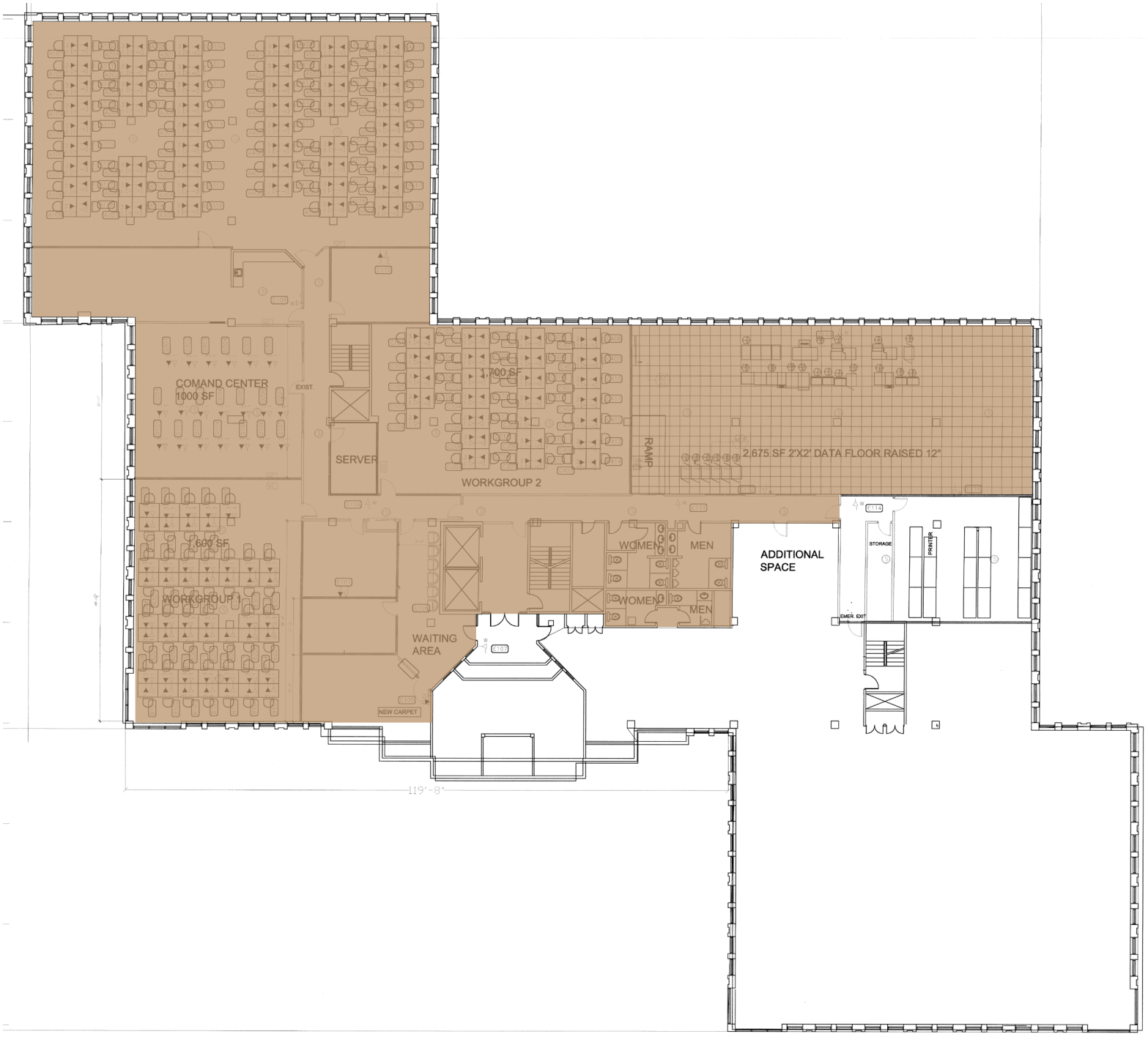
- CANADIAN TIRE
- SPORTS EXPERTS
- PLACE VERTU
- ADONIS
- DOLLARAMA
- JOE FRESH
- URBAN PLANET
- TOYS R US
- WALMART
- DOLLARAMA

- MARIOTT
- BEST WESTERN
- HILTON GARDEN



3em étage | 3rd floor

- 1 835 Pi. Ca. | 835 Sq. Ft.
- 2 1 085 Pi. Ca. | 1 085 Sq. Ft.



2em étage | 2nd floor
 17 500 Pi. Ca. | 17 500 Sq. Ft.



Rez-de-Chaussée
Ground level

8 946 Pi. Ca. | 8 946 Sq. Ft.



CONTACTEZ-NOUS – CONTACT US

ÉQUIPE DE LOCATION LEASING TEAM

T: +1 514 535 4444
leasing@brasswater.ca

JORDAN ALTMAN

Agent a la location
Leasing Agent
T: +1 514 775 1234
jaltman@brasswater.ca

GIL KASTNER

Chef de la Direction Location & Développement des Affaires
Chief Leasing Director & Business Development Officer
T: + 514 592 5738
gkastner@brasswater.ca



BRASSWATER

245, avenue Victoria,
Suite 801
Westmount, Qc | H3Z 2M6
T: +1 514 535 4444
www.brasswater.ca