

# 174 Wicksteed Ave

Toronto, ON

Central Leaside Business Park Location

Move-in Ready Office Space For Lease





# Property Details

Location: 174 Wicksteed Ave., Toronto, ON

Premises: 1,738 sq. ft.  
(Space contains 2 private offices, a boardroom, a newly updated 3 piece washroom with enclosed shower in the basement and a storage room)

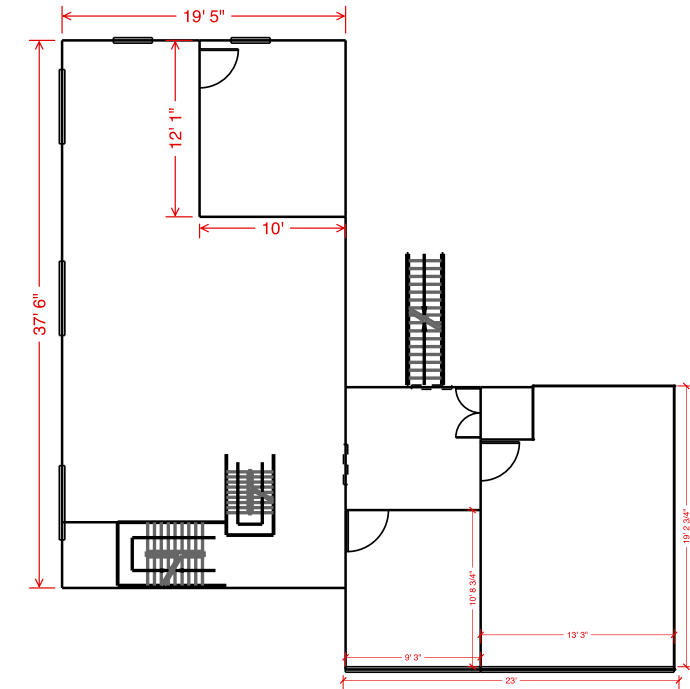
Rental Rate: \$25.00 per sq. ft./annum (Gross)  
Subject to escalations over the term

- Features:
- Furnished space – move-in condition
  - Steps to ample amenities including a Staples and SmartCentres shopping mall with restaurants, banking, Sobey's, LCBO, Winners etc.
  - Free on-site parking available
  - Short walk to future Eglinton Crosstown

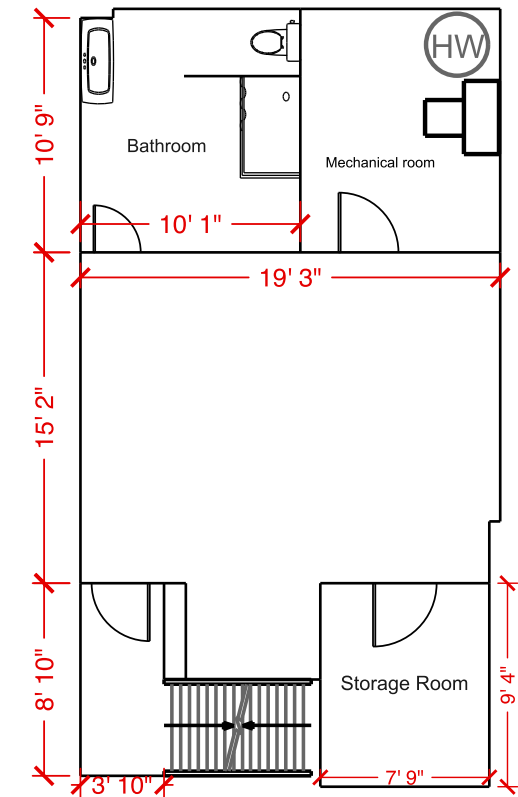


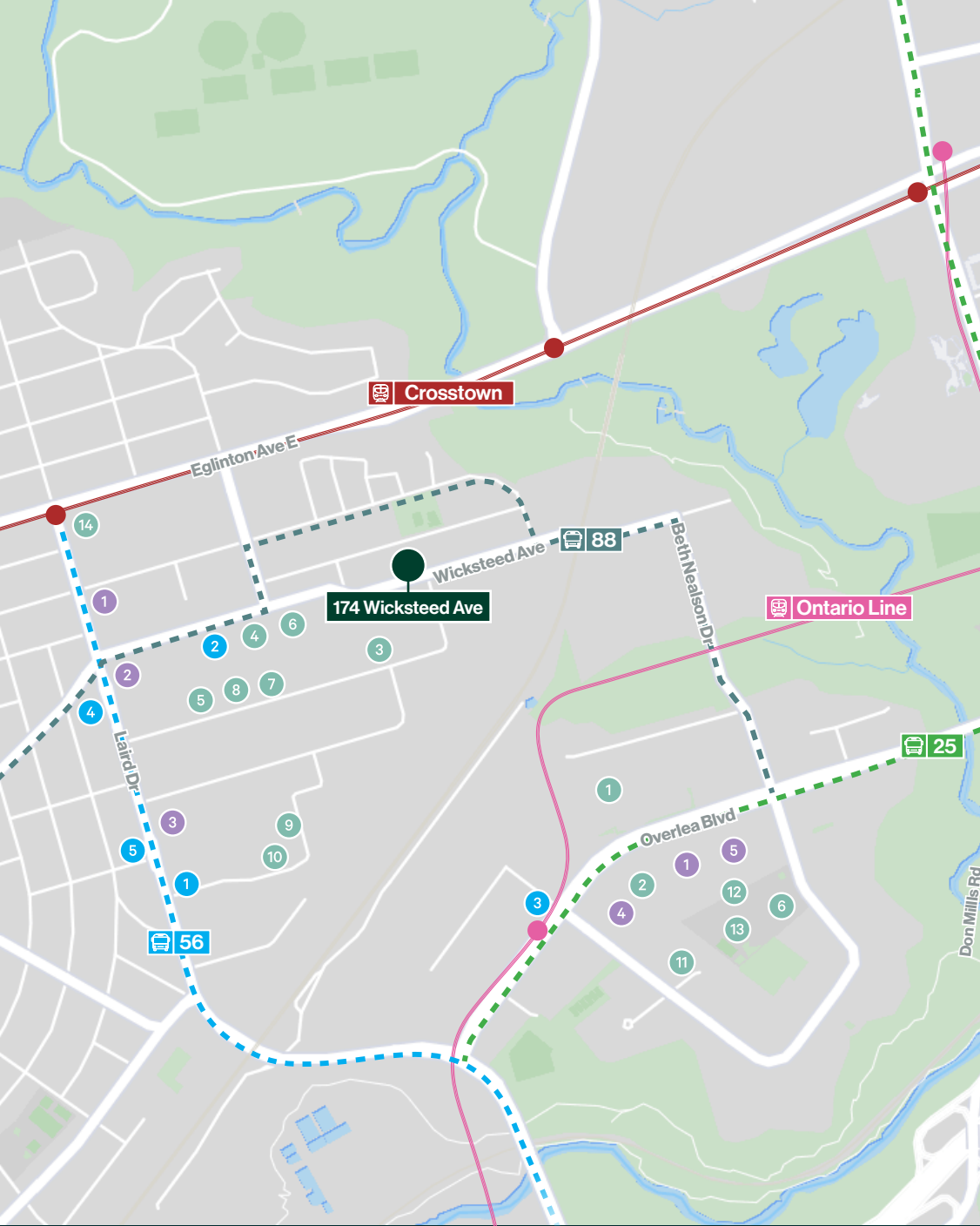
# Floor Plan

MAIN LEVEL



BASEMENT LEVEL





### Retail

- 1 Costco
- 2 Shoppers Drug Mart
- 3 The Home Depot
- 4 Urban Barn
- 5 Best Buy
- 6 LCBO
- 7 Sportchek
- 8 Sobeys
- 9 Longos
- 10 Beer Store
- 11 Fido
- 12 Rogers
- 13 Food Basics
- 14 Canadian Tire



### Banks

- 1 TD Bank
- 2 RBC
- 3 CIBC
- 4 BMO Bank of Montreal
- 5 Scotiabank

### Restaurants

- 1 Amsterdam Barrel House
- 2 Starbucks
- 3 Tim Hortons
- 4 Local Public Eatery
- 5 Old Yorke Fish & Chips

### Transit

-  Future Ontario Line Station
-  Eglinton Crosstown Station

## Contact Us

**David Chiarello\***

Associate Vice President

+1 416 495 6220

david.chiarello@cbre.com

\*Sales Representative | All Outlines Are Approximate | CBRE Limited | Real Estate Brokerage | 2005 Sheppard Ave. E., #800, Toronto, ON M2J 5B4

This disclaimer shall apply to CBRE Limited, Real Estate Brokerage, and to all other divisions of the Corporation; to include all employees and independent contractors ("CBRE"). The information set out herein, including, without limitation, any projections, images, opinions, assumptions and estimates obtained from third parties (the "Information") has not been verified by CBRE, and CBRE does not represent, warrant or guarantee the accuracy, correctness and completeness of the Information. CBRE does not accept or assume any responsibility or liability, direct or consequential, for the Information or the recipient's reliance upon the Information. The recipient of the Information should take such steps as the recipient may deem necessary to verify the Information prior to placing any reliance upon the Information. The Information may change and any property described in the Information may be withdrawn from the market at any time without notice or obligation to the recipient from CBRE. CBRE and the CBRE logo are the service marks of CBRE Limited and/or its affiliated or related companies in other countries. All other marks displayed on this document are the property of their respective owners. All Rights Reserved. Mapping Sources: Canadian Mapping Services canadamapping@cbre.com; MapPoint, DMTI Spatial, EnviroNics Analytics, Microsoft Bing, Google Earth.