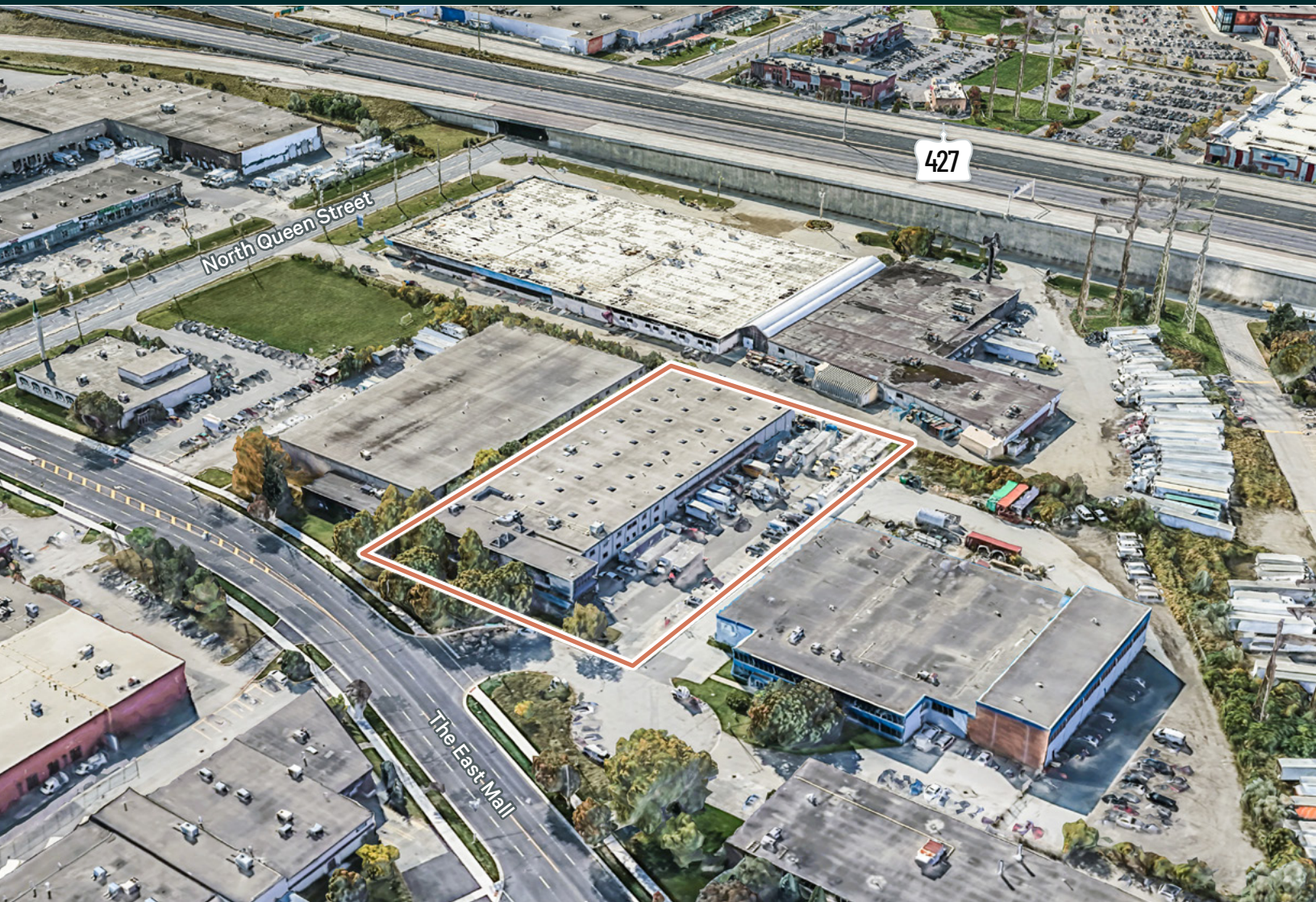


For Lease — FREESTANDING



124 The East Mall, Etobicoke

±47,884 Sq. Ft. on ±1.96 Acres

PHILLIP CHEUNG*
Executive Vice President
416 798 6243
phillip.cheung@cbre.com

CARLEY WILLIAMSON
Sales Representative
416 798 6276
carley.williamson@cbre.com

EVAN S. WHITE*
Executive Vice President
416 798 6232
evan.white@cbre.com

CBRE
*Sales Representative

Property Details

****Not included in the total square footage**



LOCATION	The East Mall & North Queen Street	
SIZE	1st Floor Office	±7,519 Sq. Ft.
	2nd Floor Office	±7,460 Sq. Ft.
	Warehouse	±32,905 Sq. Ft.
	Total Size	±47,884 Sq. Ft.
	Mezzanine	±4,000 Sq. Ft.**
LOT SIZE	±1.96 Acres	
ASKING RATE	\$17.50 Net Per Sq. Ft.	
PROPERTY TAXES (2023)	\$67,889.45 <i>Tenant to also be responsible for Building Insurance and Maintenance</i>	
SHIPPING	5 Truck Level Doors, 1 Drive-In Door 1 Van Door	
CLEAR HEIGHT	±16'	
POSSESSION	May 1, 2024	
ZONING	E1 - Employment Industrial	

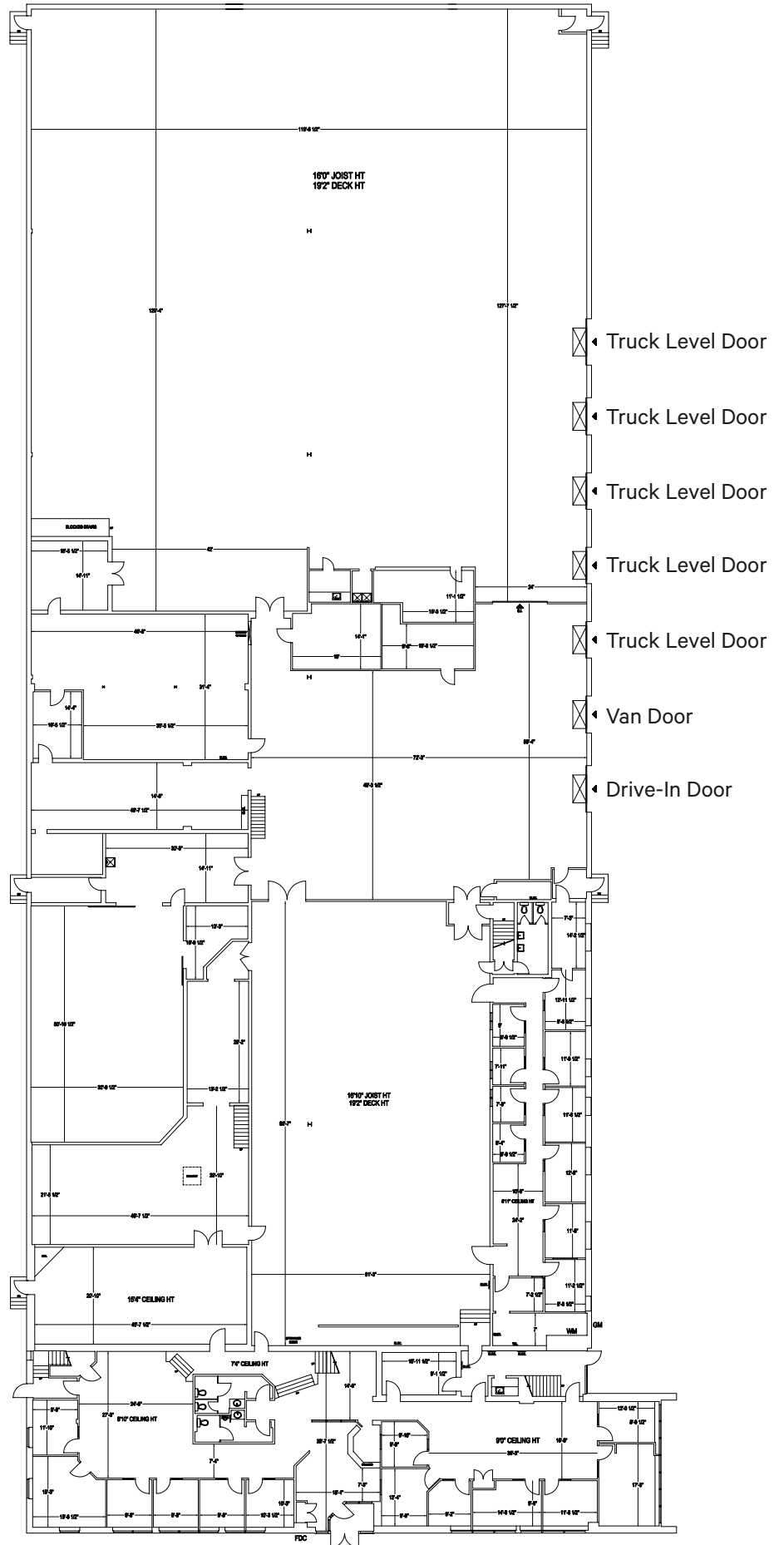
COMMENTS

- Great freestanding building with exposure on The East Mall
- Office space over two floors, with a mix of private offices, meeting rooms and open space
- Large, bright reception area
- Ample parking
- Excellent access to public transit, Highway 427, the Gardiner Expressway and Q.E.W.
- Great location in close proximity to various amenities



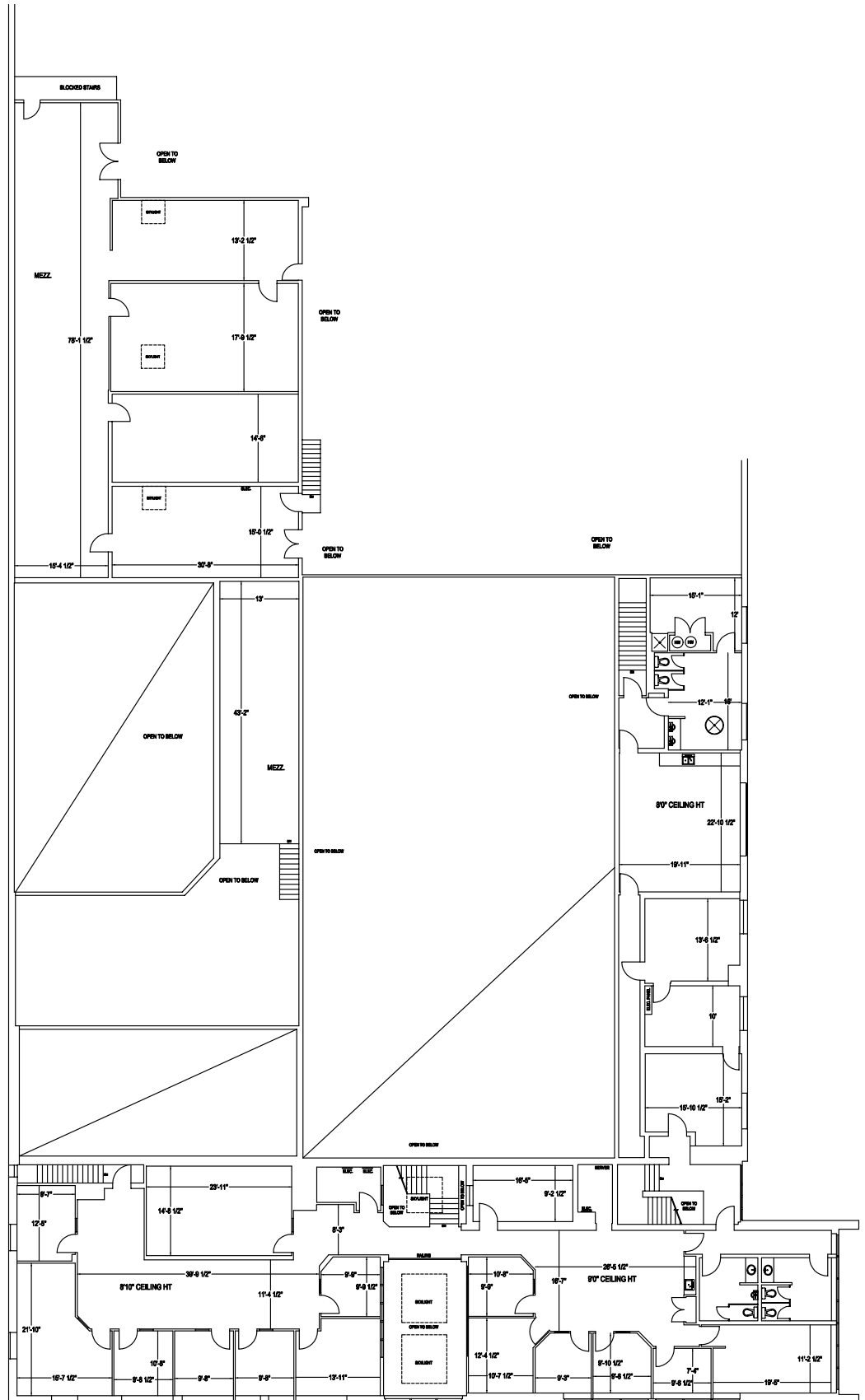
Floor Plan

First Floor



Floor Plan

Second Floor



Photos - Exterior



Photos - Interior



Property Zoning

E1 - Employment Industrial

PERMITTED USES

- ✓ Ambulance Depot
- ✓ Animal Shelter
- ✓ Artist Studio
- ✓ Automated Banking Machine
- ✓ Bindery
- ✓ Building Supply Yards
- ✓ Carpenter's Shop
- ✓ Cold Storage
- ✓ Contractor's Establishment
- ✓ Custom Workshop
- ✓ Dry Cleaning or Laundry Plant
- ✓ Financial Institution
- ✓ Fire Hall
- ✓ Industrial Sales and Service Use
- ✓ Kennel
- ✓ Laboratory
- ✓ Office
- ✓ Park
- ✓ Performing Arts Studio
- ✓ Pet Services
- ✓ Police Station
- ✓ Printing Establishment
- ✓ Production Studio
- ✓ Public Works Yard
- ✓ Service Shop
- ✓ Software Development and Processing
- ✓ Warehouse
- ✓ Wholesaling Use

Manufacturing Use if it is not one of the following:

1. Abattoir, Slaughterhouse or Rendering of Animals Factory;
2. Ammunition, Firearms or Fireworks Factory;
3. Asphalt Plant;
4. Cement Plant, or Concrete Batching Plant;
5. Crude Petroleum Oil or Coal Refinery;
6. Explosives Factory;
7. Industrial Gas Manufacturing;
8. Large Scale Smelting or Foundry Operations for the Primary Processing of Metals;
9. Pesticide or Fertilizer Manufacturing;
10. Petrochemical Manufacturing;
11. Primary Processing of Gypsum;
12. Primary Processing of Limestone;
13. Primary Processing of Oil-based Paints, Oil-based Coatings or Adhesives;
14. Pulp Mill, using pulpwood or other vegetable fibers;
15. Resin, Natural or Synthetic Rubber Manufacturing;
16. Tannery

USE WITH CONDITIONS

- ◆ Body Rub Service (32)
- ◆ Cogeneration Energy (26)
- ◆ Crematorium (33)
- ◆ Drive Through Facility (5,21)
- ◆ Eating Establishment (3,19,30)
- ◆ Medical marijuana production facility (2)
- ◆ Metal Factory involving Forging and Stamping (25)
- ◆ Open Storage (10)
- ◆ Public Utility (27,29)
- ◆ Recovery Facility (8)
- ◆ Recreation Use (7)
- ◆ Renewable Energy (26)
- ◆ Retail Service (3)
- ◆ Retail Store (4,30)
- ◆ Shipping Terminal (11)
- ◆ Take-out Eating Establishment (3,30)
- ◆ Transportation Use (28)
- ◆ Vehicle Depot (6)
- ◆ Vehicle Fuel Station (16,30)
- ◆ Vehicle Repair Shop (23)
- ◆ Vehicle Service Shop (17,31)
- ◆ Vehicle Washing Establishment (18)

Amenities



Property Location

--- Route 123B - Kipling Station/Long Branch

--- Route 123D - Kipling Station/Sherway Gardens

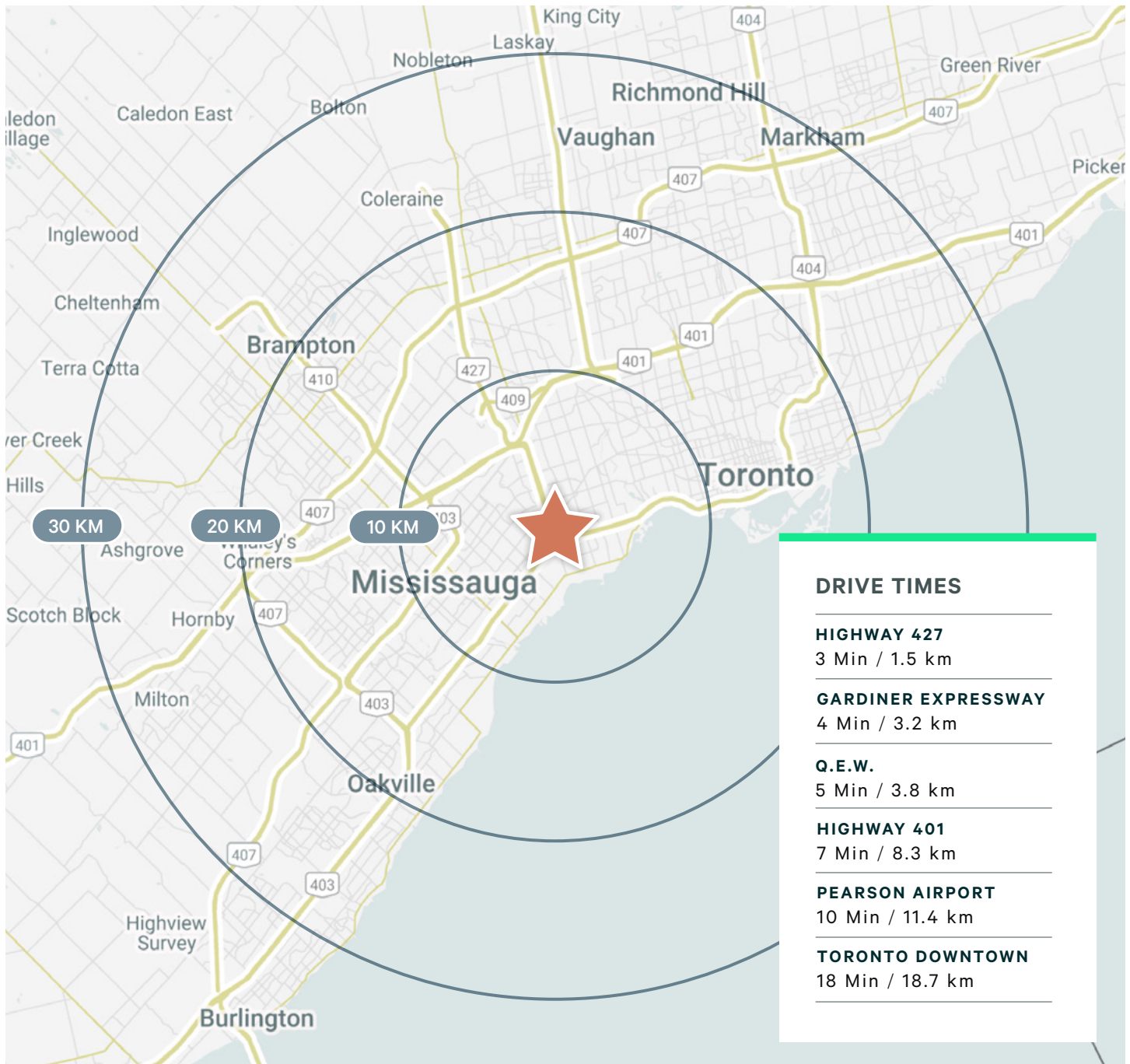
--- Route 123C - Kipling Station/Long Branch

--- Route 123F - Kipling Station/Sherway Gardens

Location & Demographics†

	10 KM	20 KM	30 KM
POPULATION	856,488	3,120,747	5,203,470
LABOUR FORCE	66.2%	67.5%	67%
MEDIAN AGE	40.7	38.9	39

†Estimates for 2023





For Lease

124 The East Mall, Etobicoke

Contact Us

Phillip Cheung*

Executive Vice President

416 798 6243

phillip.cheung@cbre.com**Carley Williamson**

Sales Representative

416 798 6276

carley.williamson@cbre.com**Evan S. White***

Executive Vice President

416 798 6232

evan.white@cbre.com**CBRE**

*Sales Representative

CBRE Limited, Real Estate Brokerage | Toronto West | 5935 Airport Road, Suite 700, Mississauga, ON L4V 1W5

This disclaimer shall apply to CBRE Limited, Real Estate Brokerage, and to all other divisions of the Corporation; to include all employees and independent contractors ("CBRE"). The information set out herein, including, without limitation, any projections, images, opinions, assumptions and estimates obtained from third parties (the "Information") has not been verified by CBRE, and CBRE does not represent, warrant or guarantee the accuracy, correctness and completeness of the Information. CBRE does not accept or assume any responsibility or liability, direct or consequential, for the Information or the recipient's reliance upon the Information. The recipient of the Information should take such steps as the recipient may deem necessary to verify the Information prior to placing any reliance upon the Information. The Information may change and any property described in the Information may be withdrawn from the market at any time without notice or obligation to the recipient from CBRE. CBRE and the CBRE logo are the service marks of CBRE Limited and/or its affiliated or related companies in other countries. All other marks displayed on this document are the property of their respective owners. All Rights Reserved. Mapping Sources: Canadian Mapping Services canadamapping@cbre.com; DMTI Spatial, Environics Analytics, Microsoft Bing, Google Earth.