

# Surrey Central Business Park

Proudly owned and  
managed by:



**BUILDING 3**

**7565 | 132<sup>ND</sup> STREET**  
**SURREY, BC**

**Nicolas Bilodeau**, Senior Vice President  
604 647 1336  
nicolas.bilodeau@avisonyoung.com

**Josh Sookero\***, Principal  
604 647 5091  
josh.sookero@avisonyoung.com

\*Josh Sookero Personal Real Estate Corporation

**AVISON  
YOUNG**



BUILDING 3

**7565** | 132<sup>ND</sup> STREET  
SURREY, BC

SUITE	AREA	AVAILABLE	OPERATION COSTS & TAXES (EST.)	CONDITION OF IMPROVEMENTS
-------	------	-----------	--------------------------------	---------------------------

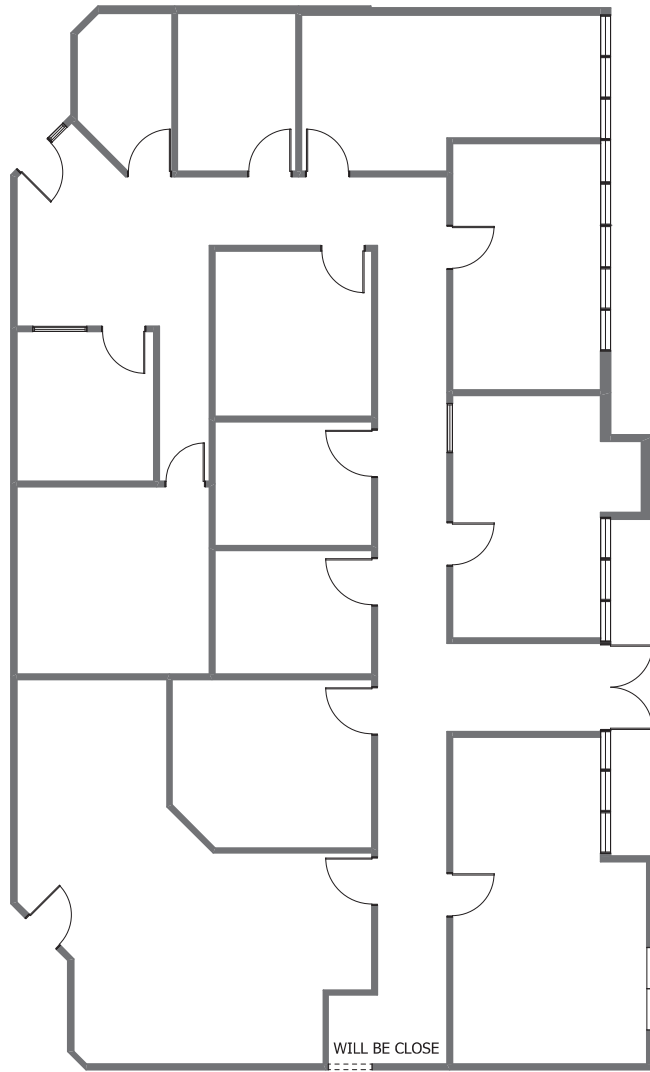
104

3,814 sf

Immediately

\$15.78 psf

Premises features private street entrance and consists of 7 offices, 4 boardrooms/ meeting rooms and open area.

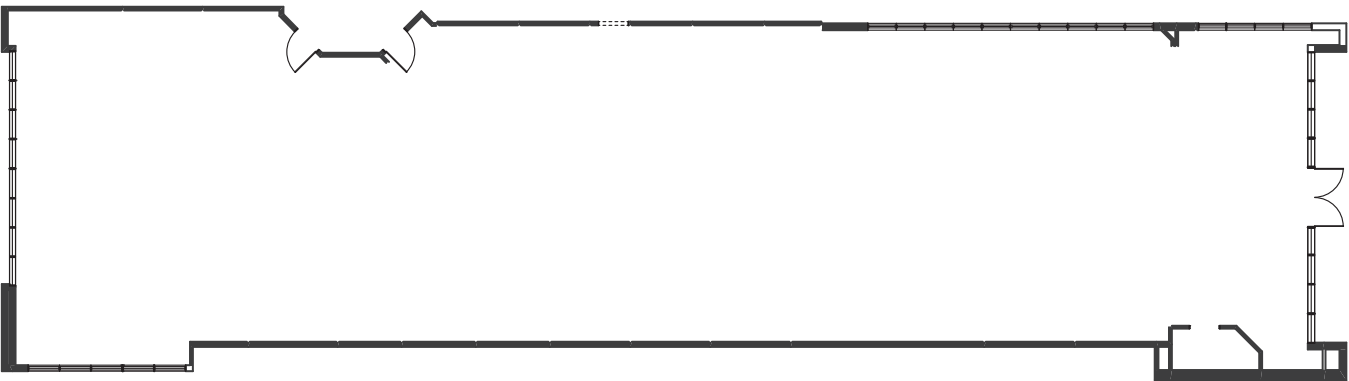
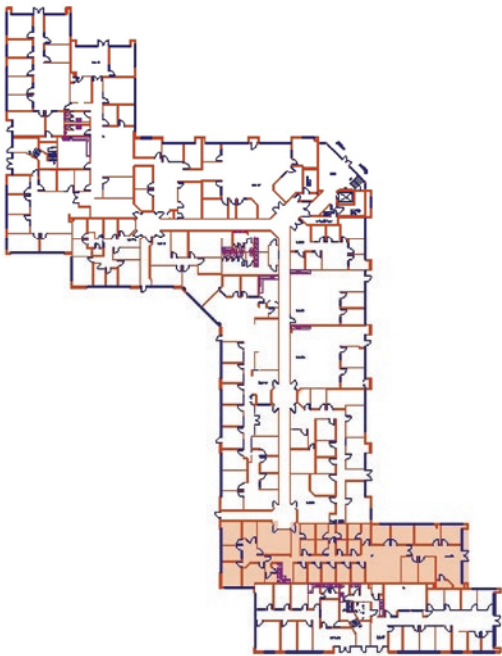




BUILDING 3

**7565** | 132<sup>ND</sup> STREET  
SURREY, BC

SUITE	AREA	AVAILABLE	OPERATION COSTS & TAXES (EST.)	CONDITION OF IMPROVEMENTS
106	5,512 sf	Immediately	\$15.78 psf	Open area shell with open ceiling and lights





BUILDING 3

**7565** | 132<sup>ND</sup> STREET  
SURREY, BC

SUITE	AREA	AVAILABLE	OPERATION COSTS & TAXES (EST.)	CONDITION OF IMPROVEMENTS
-------	------	-----------	--------------------------------	---------------------------

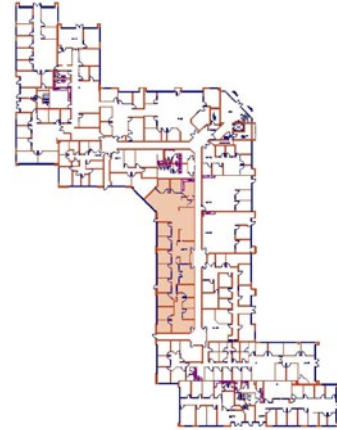
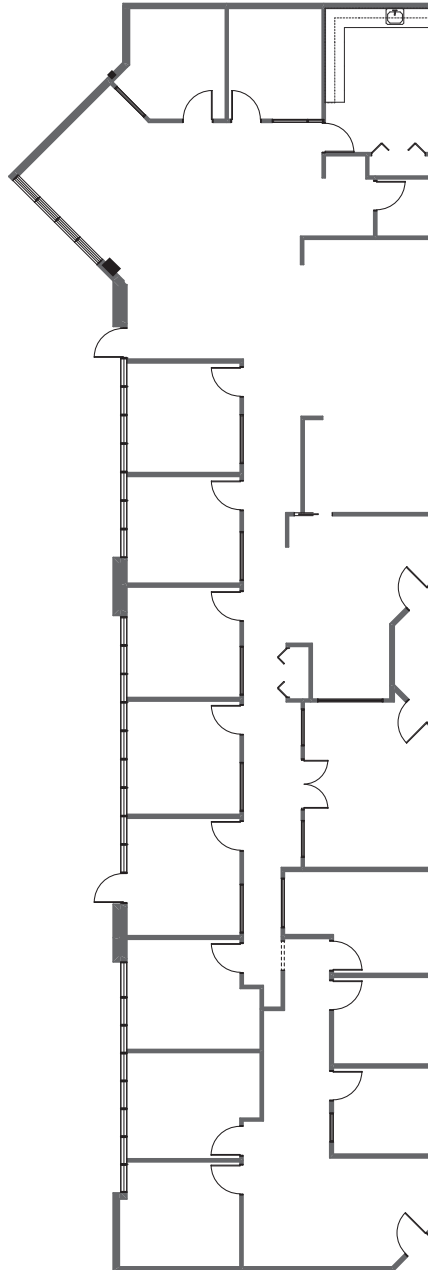
112

4,986 sf

Immediately

\$15.78 psf

Multiple offices, meeting rooms, kitchen/ lunchroom, reception and open area

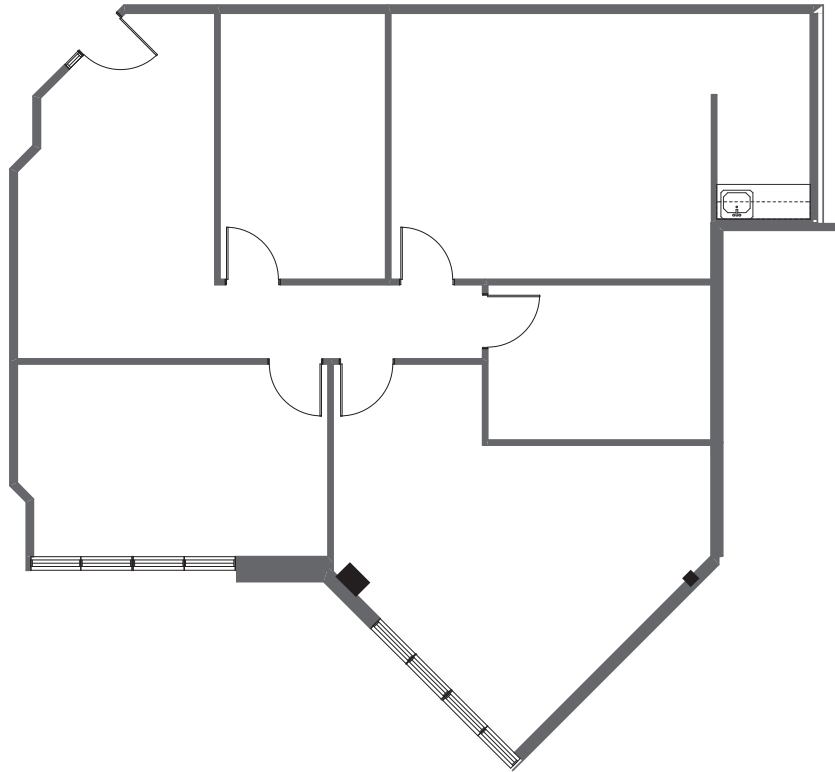
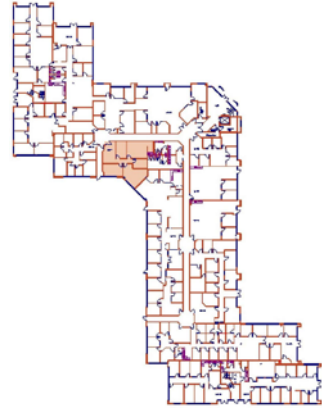




BUILDING 3

**7565** | 132<sup>ND</sup> STREET  
SURREY, BC

SUITE	AREA	AVAILABLE	OPERATION COSTS & TAXES (EST.)	CONDITION OF IMPROVEMENTS
114	1,678 sf	Immediately	\$15.78 psf	Three offices, two boardrooms, kitchenette and reception

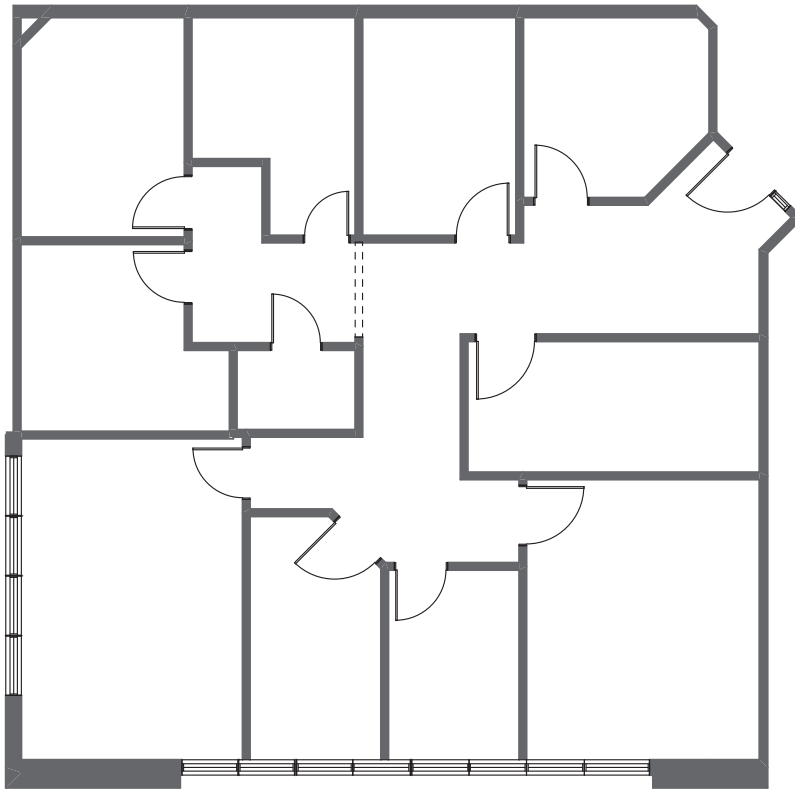
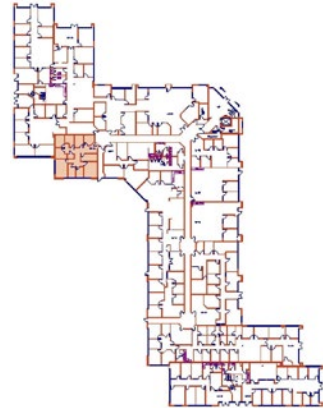




BUILDING 3

**7565** | 132<sup>ND</sup> STREET  
SURREY, BC

SUITE	AREA	AVAILABLE	OPERATION COSTS & TAXES (EST.)	CONDITION OF IMPROVEMENTS
115	1,692 sf	Immediately	\$15.78 psf	Eight offices, two boardrooms and storage





BUILDING 3

**7565** | 132<sup>ND</sup> STREET  
SURREY, BC

SUITE	AREA	AVAILABLE	OPERATION COSTS & TAXES (EST.)	CONDITION OF IMPROVEMENTS
-------	------	-----------	--------------------------------	---------------------------

207	6,451 sf	Immediately	\$16.46 psf	Existing Improvements in place
-----	----------	-------------	-------------	--------------------------------

