

**AVISON
YOUNG**

Westgrove Professional Building

10230 142 Street
Edmonton, AB

For Lease

MEDICAL & PROFESSIONAL OFFICE

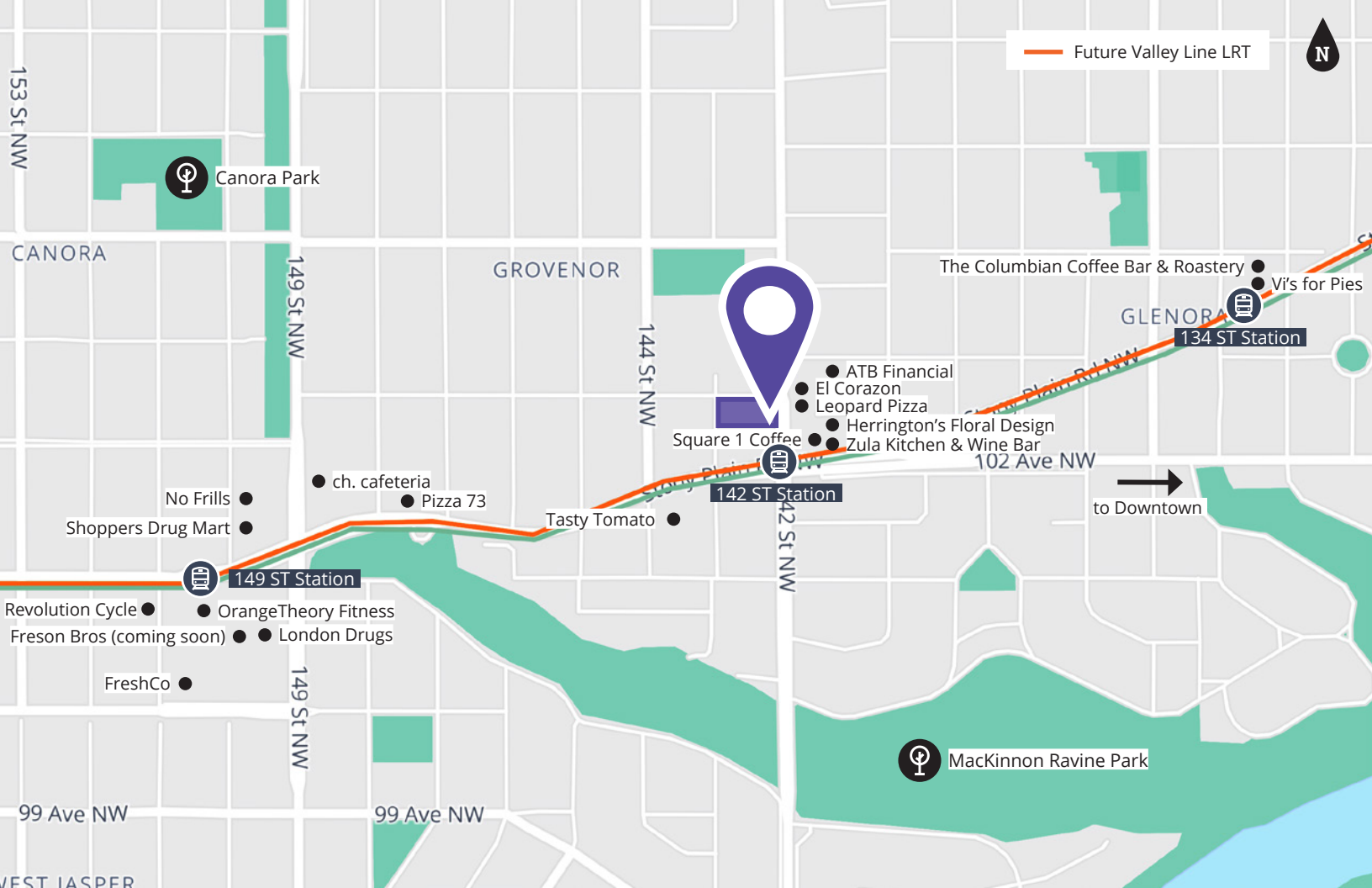


Mark Hartum, SIOR
Principal
+1 780 429 7557
mark.hartum@avisonyoung.com

Jason Gardner
Vice President
+1 780 429 7569
jason.gardner@avisonyoung.com

Hillary Williams
Senior Associate
+1 780 429 7564
hillary.williams@avisonyoung.com

avisonyoung.com



Westgrove

PROFESSIONAL BUILDING

- Excellent location on Stony Plain Road and 142 Street
- Join existing tenants such as Rexall Pharmacy, Qurely Pediatrics North, Cornerstone Counselling, and Café Rista
- Locally owned and managed for professional and timely service to tenants
- Underground parking for tenants and free surface stalls for visitors
- State of the art, computerized building management system for HVAC and security
- Common boardroom available to tenants
- Low gross up factor



Future Valley LRT

As LRT construction continues along 142 Street, commuting time to downtown has increased significantly. Now is the time to relocate and reduce the trek through the traffic congestion. You'd be at your office by now at Westgrove Professional Building.

With the upcoming Valley Line LRT station just off of 142 Street, the building is ideally located for excellent public transit accessibility.

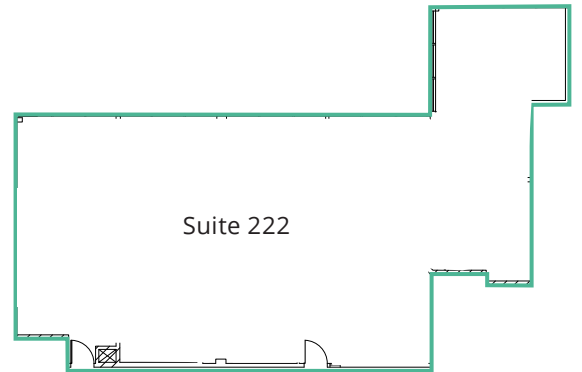
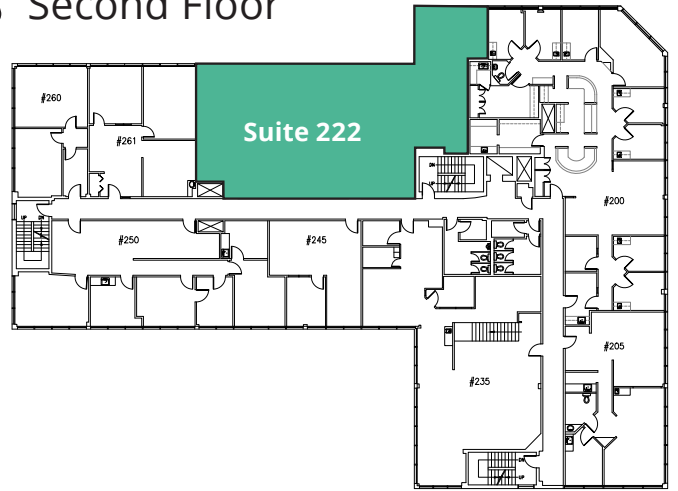
You'd be at your office by now

Medical & Professional Office For Lease

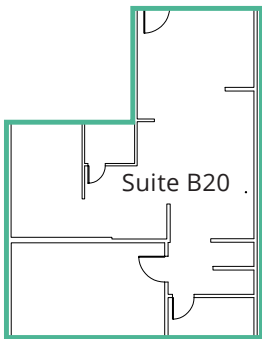
 10230 142 Street, Edmonton, AB

Area Available	Suite B20: 1,109 sf Suite 101: 856 sf pending Suite 222: 2,546 sf Suite 324: 717 sf Suite 327: 687 sf
Lease Rate	Starting at \$16.00 psf
Additional Rent	\$18.17 psf (2024) (includes utilities and in-suite janitorial)
Parking	2.25/1,000 sf Available underground \$160 / stall (single) \$260 / stall (tandem) Ample free visitor parking in visitor lot and street parking
Signage	Building signage opportunities
Building Hours	Monday - Friday 7:00 am - 6:00 pm After hours intercom

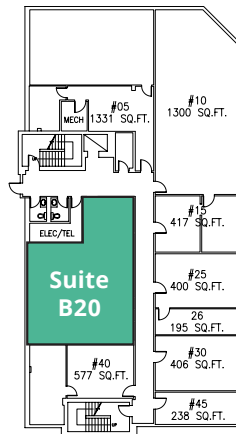
Second Floor



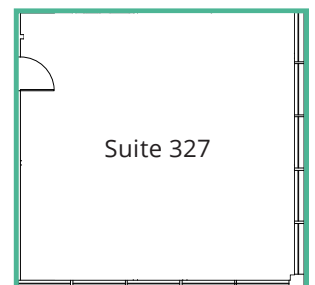
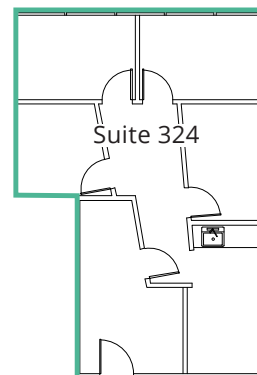
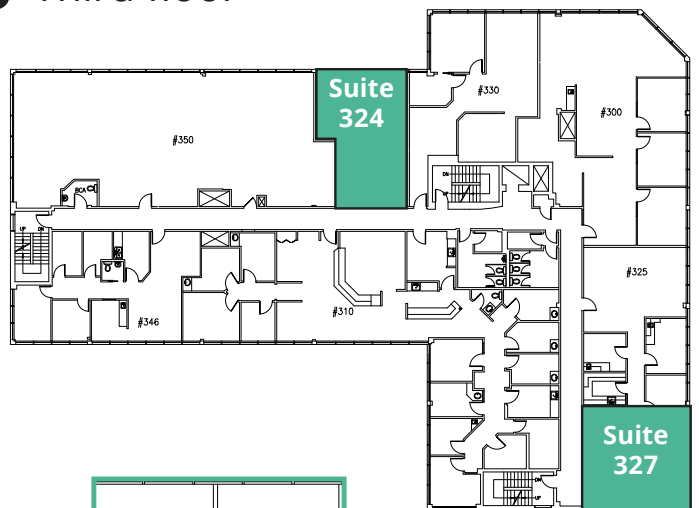
Basement



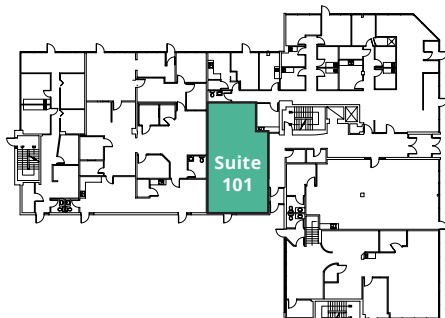
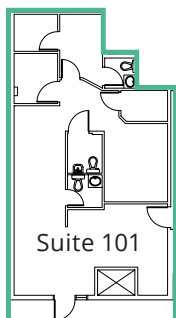
Former x-ray clinic



Third floor



Main floor



Join your neighbours

Benefit from your medical and professional neighbours including:

- Medical specialists such as MedSleep, Qurely Pediatrics North, two infusion clinics, hearing audiologist, neurologist, dental, two psychology clinics, and pharmacy (Rexall)



Join:



Visit us online
avisonyoung.com

© 2024 Avison Young Commercial Real Estate Services, LP. All rights reserved.

E. & O.E.: The information contained herein was obtained from sources which we deem reliable and, while thought to be correct, is not guaranteed by Avison Young.

Suite 2100, 10111 - 104 Avenue | Edmonton, AB | +1 780 428 7850

**AVISON
YOUNG**