

33/43

ROYDON PL

Nepean, Ontario

Spaces ranging from:

738 sq.ft - 6,048 sq.ft.

LEE LACOMBE, Leasing Manager
llacombe@colonnadebridgeport.ca
343.633.4956



OFFICE SPACE
FOR LEASE



**COLONNADE
BRIDGEPORT**

Realty Inc., Brokerage

33/43 ROYDON PLACE

Nepean, Ontario

LEASE DETAILS

33 Roydon

Rental Rate: Please contact

Taxes & Operating: \$11.79/sq.ft.

43 Roydon

Rental Rate: Please contact

Taxes & Operating: \$11.99/sq.ft.

Operating costs, tax estimates and rental ranges are based on 2024 figures and are subject to change.

AVAILABLE NOW

OPPORTUNITY

33 Roydon

Unit 201 - 1,661 sq.ft

Unit 205 - 3,649 sq.ft.

Unit 206 - 759 sq.ft.

Unit 207 - 933 sq.ft.

Unit 209 - 935 sq.ft.

Unit 210 - 738 sq.ft

FULL FLOOR - 6,048 sq.ft.

43 Roydon

Unit 202 - 927 sq.ft

Unit 208 - 1,658 sq.ft

HIGHLIGHTS



First floor retail with second-storey walk-up office



Just off of Merivale Rd., near Hunt Club Rd.



Neighbours Costco and Goodlife Fitness and minutes from many shops, restaurants and amenities



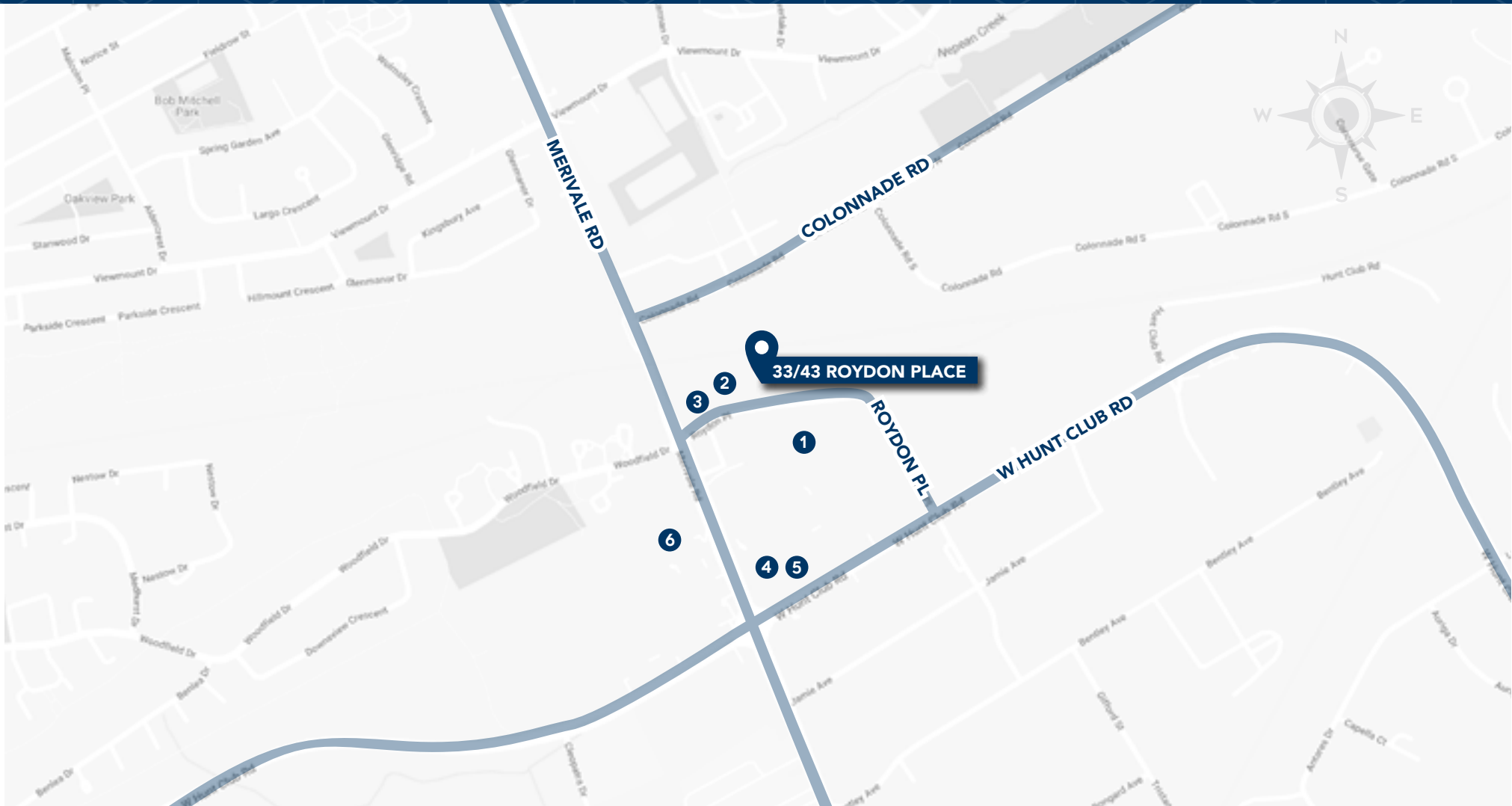
Ample free parking



10 minutes from the airport



AREA MAP



33/43 ROYDON PLACE
Nepean, Ontario

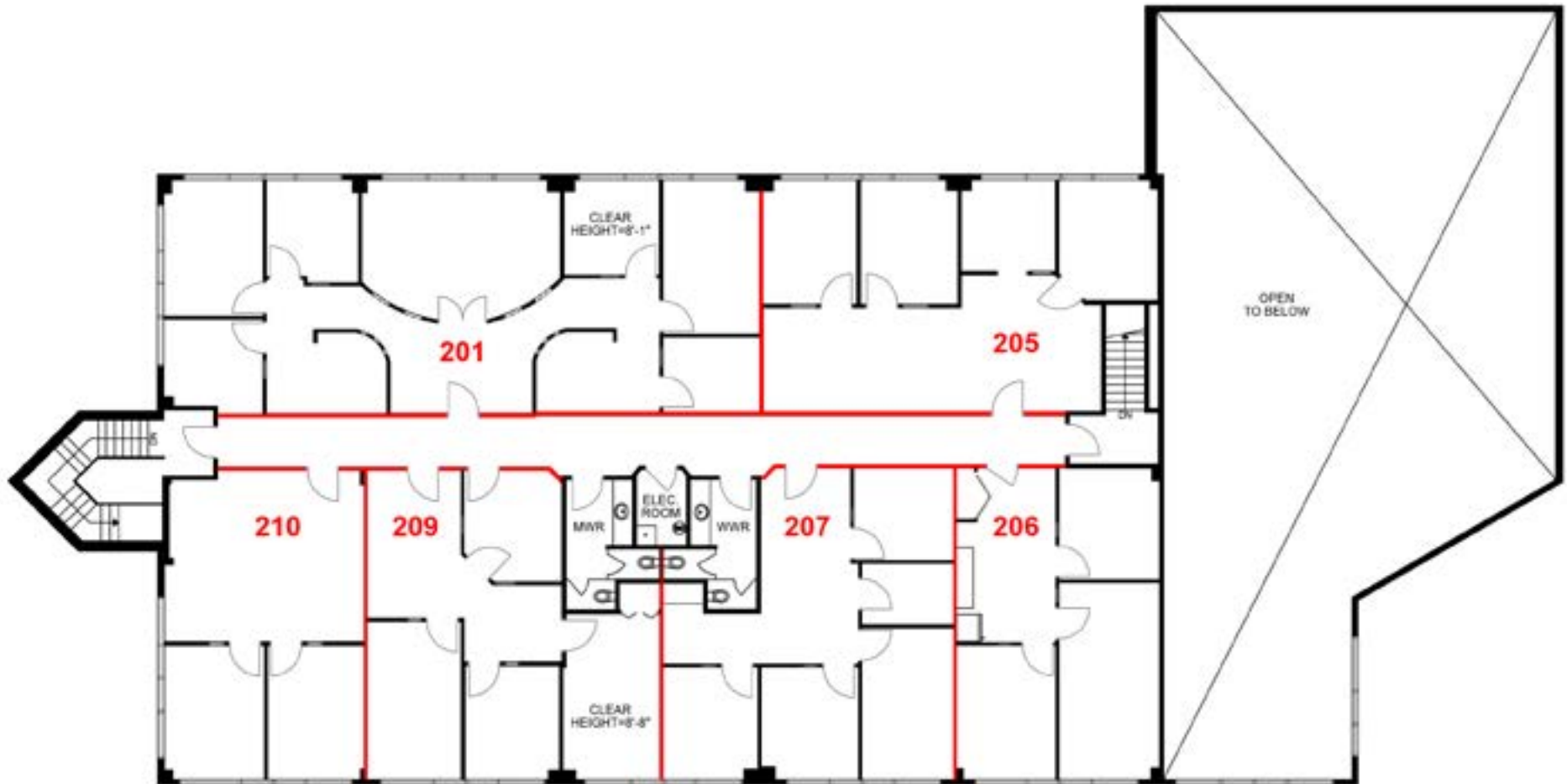
- 1 Costco Wholesale
- 2 Goodlife Fitness
- 3 Hardstone Grill

- 4 Tim Hortons
- 5 Shell
- 6 Canadian Tire

33/43 ROYDON PLACE

Nepean, Ontario

33 Roydon - 2nd floor



33/43 ROYDON PLACE

Nepean, Ontario

43 Roydon - 2nd floor

