

FOR LEASE

# GREYSTONE BUSINESS PARK

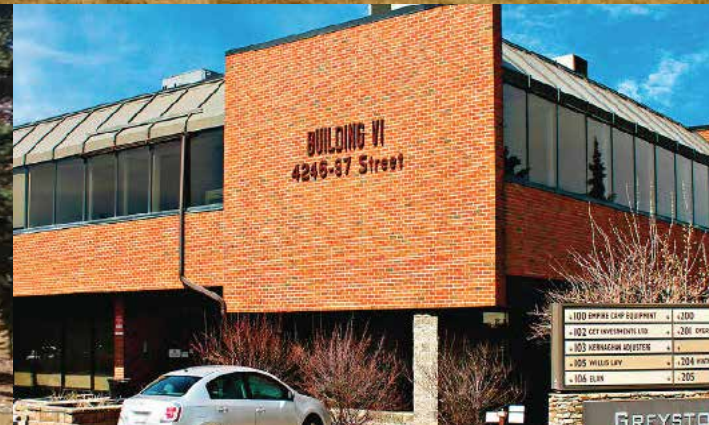
4212 97 STREET  
EDMONTON, AB

Cushman & Wakefield Edmonton  
Suite 2700, TD Tower  
10088 102 Avenue  
Edmonton, AB T5J 2Z1  
cwedm.com

Cushman & Wakefield Edmonton is independently owned and operated / A Member of the Cushman & Wakefield Alliance. No warranty or representation express or implied is made to the accuracy or completeness of the information contained herein, and same is submitted subject to errors, omissions, change of price, rental or other conditions, withdrawal without notice, and to any special listing conditions imposed by the property owner(s). As applicable, we make no representation as to the condition of the property for properties in question. Nov. 4, 2021

**Nicholas Hrebien**  
Associate  
780 917 8345  
nicholas.hrebien@cwedm.com

**John Frederickson**  
Senior Associate  
780 405 5071  
john.frederickson@cwedm.com



# PROPERTY HIGHLIGHTS

- Lobby modernization program underway
- Professionally owned and managed
- Ample visitor parking
- Access to countless amenities
- Located along Whitemud Drive

# FEATURES

- Lease Rate: Market
- Operating Cost (SF): \$13.80 Per SF
- Tenant Allowance: Negotiable
- Parking Ratio: 3 stalls per 1,000 SF surface  
1 stalls per 1,000 SF underground
- Parking Cost: Surface, no charge  
\$100.00 per month, underground
- Possession: Immediate
- Storage: Available

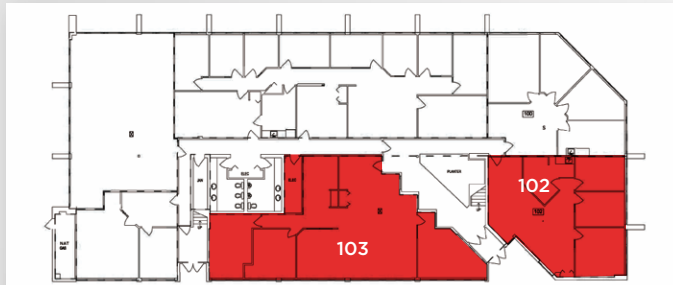
## FLOOR PLANS

### GRMC Building

MAIN FLOOR

Suite 102 - 1,313 SF

Suite 103 - 2,011 SF



### Building 4

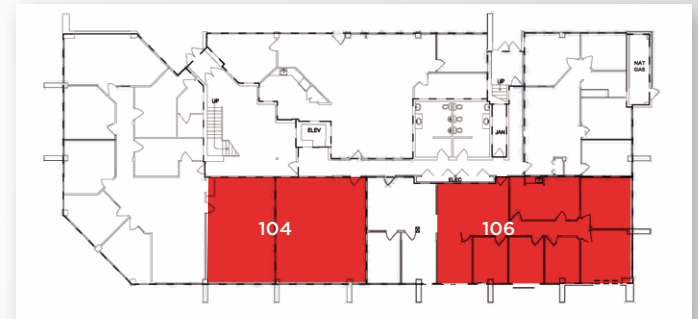
Suite 104 - 1,440 SF

Suite 106 - 1,739 SF



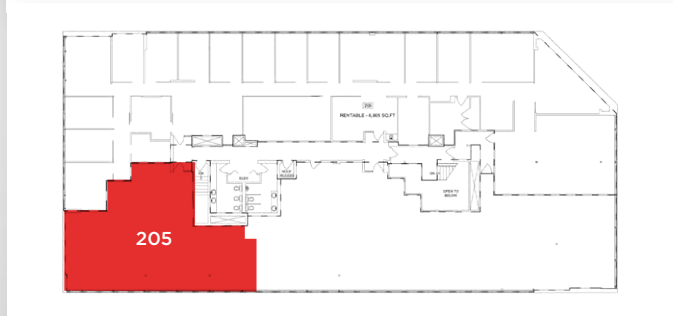
Click to view virtual tours

**Unit 106**



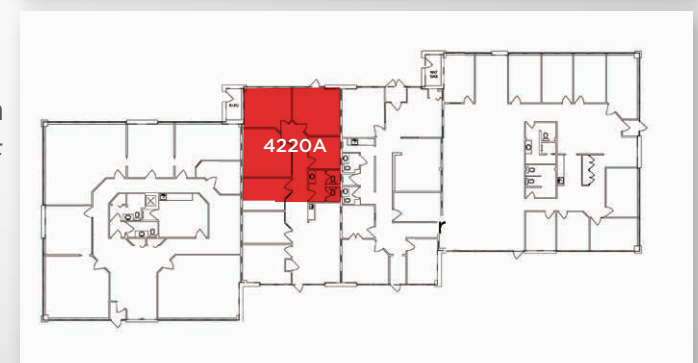
### 2ND FLOOR

Suite 205 - 1,625 SF



### Pavilion

Suite 4220A - 1,095 SF

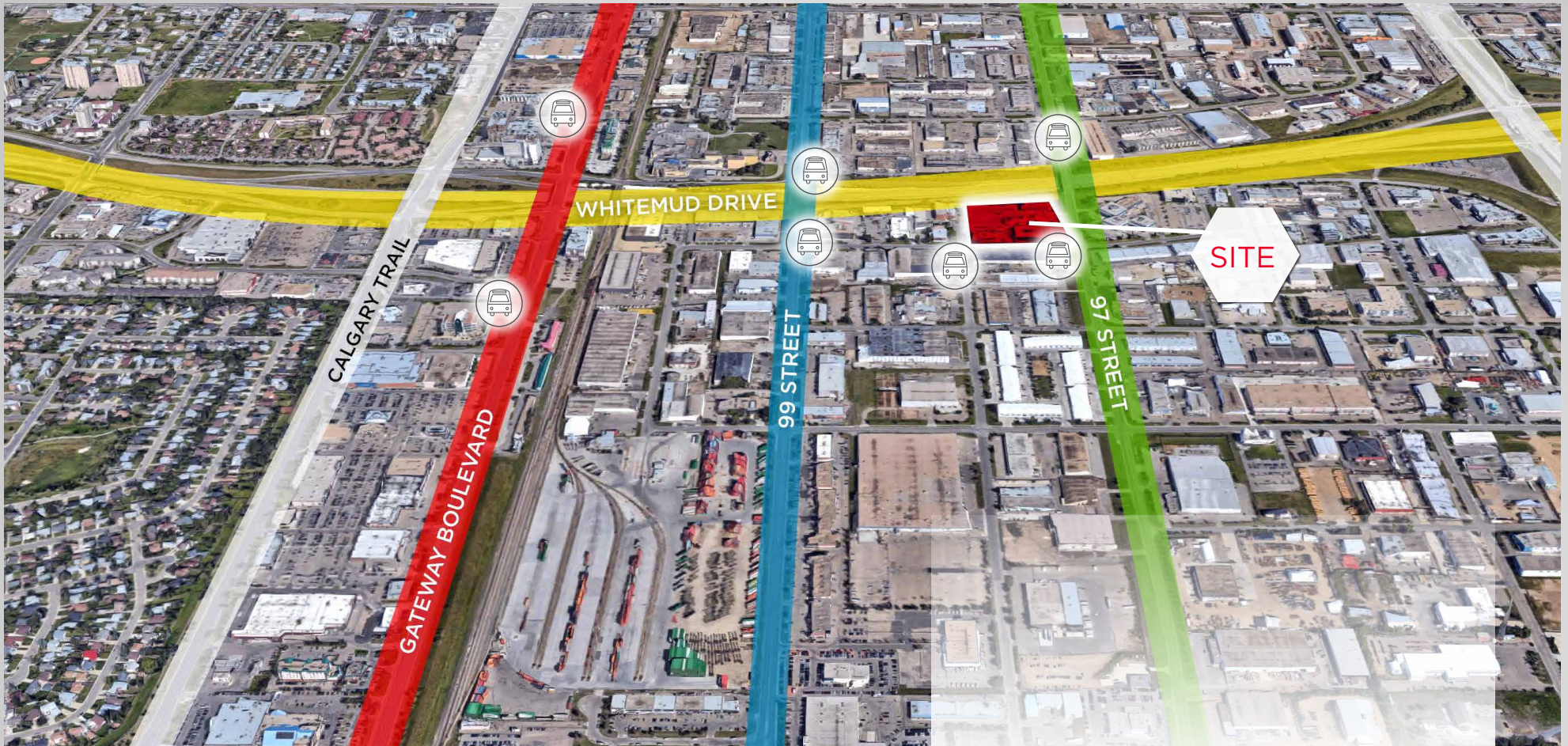


# L7 BUILDING LOBBY DESIGN



**L7 Building**  
Suite 108 - 1,869 SF





## Amenities in the AREA

Strathcona Industrial Park is perfectly positioned with access to major arterial roads, access to the downtown core within 15 minutes and the Edmonon International Airport within 20 minutes. There is an abundance of restaurants, shops and services within minutes of Greystone Business Park.

