

6020 - 104th Street Building

Exceptional Access & Exposure along
Calgary Trail with signage opportunities

6020 - 104 Street NW
Edmonton, AB

Three floors up to 28,520 sq. ft. | Ideal for Data Centre and Educational Users



6020 - 104th Street Building

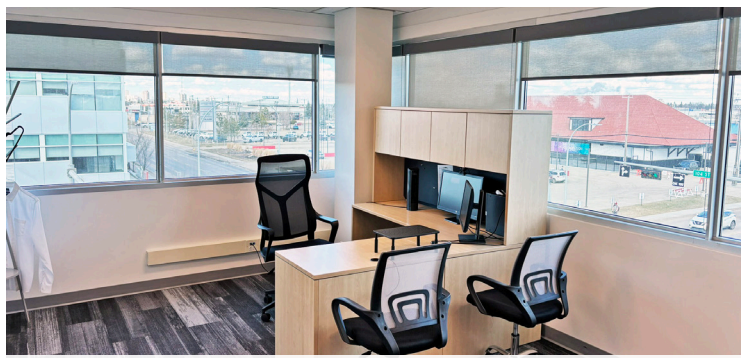
6020 - 104 Street NW | Edmonton, AB



Main Floor - Server Room

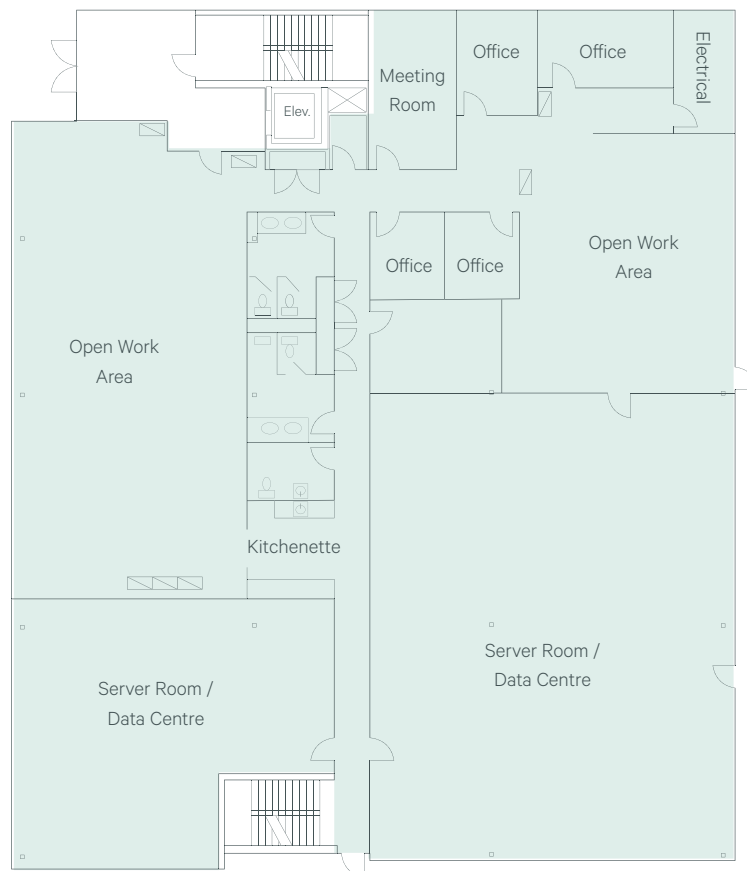


Main Floor - Work Area



Third Floor - Office

Main Floor | 7,850 sq. ft.



Ideal for data centres or users with large and/or secure server requirements



Second Floor - Classroom

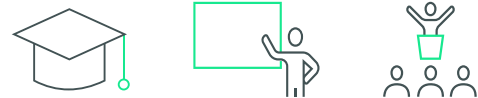
Lease Details:

Availability	Main Floor: 7,850 sq. ft. 2 nd Floor: 10,334 sq. ft. 3 rd Floor: 10,336 sq. ft. Total: 28,520 sq. ft.
Lease Rate	\$17.00 / sq. ft.
Operating Costs	\$15.50 / sq. ft. (2025)
Parking	2.7 underground stalls / 1,000 sq. ft. Additional surface stalls available
Parking Rates	\$100.00 / stall / month
Signage	Available

Building Highlights

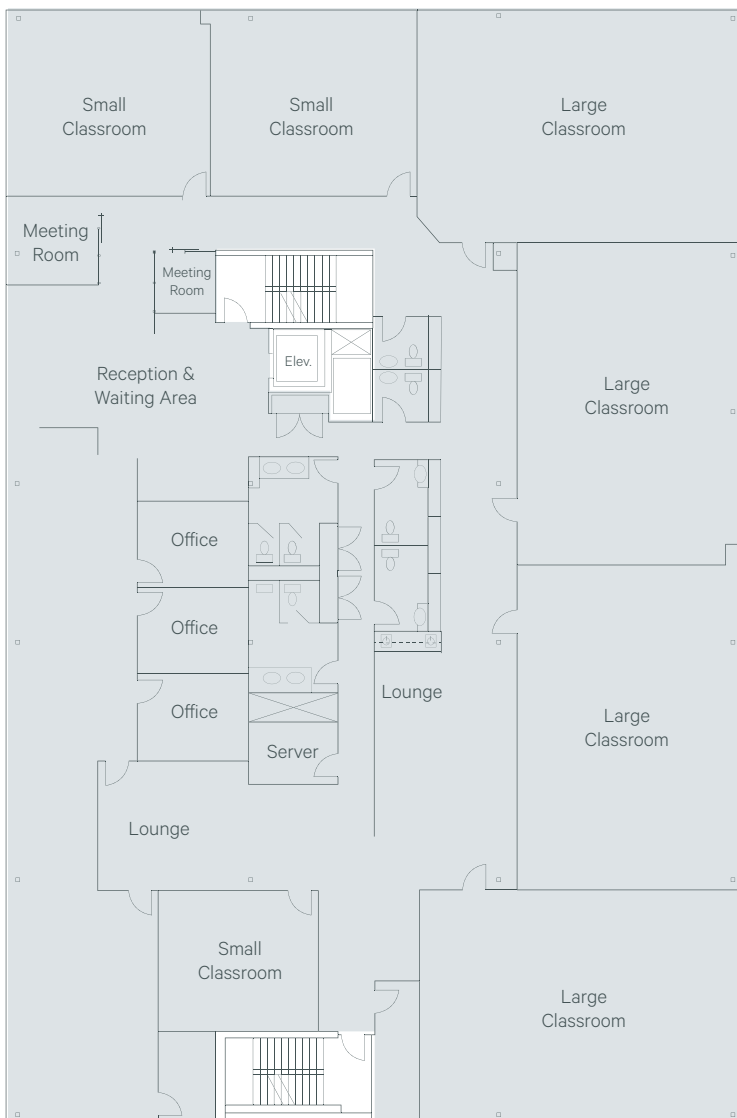
- + Exclusive underground parkade
- + Professionally owned & managed
- + Building & pylon signage available
- + High traffic exposure
- + Energy efficient windows
- + UV rated window blinds
- + T-8 lighting

2nd & 3rd Floors: Ideal for educational user groups or those with need for large training spaces



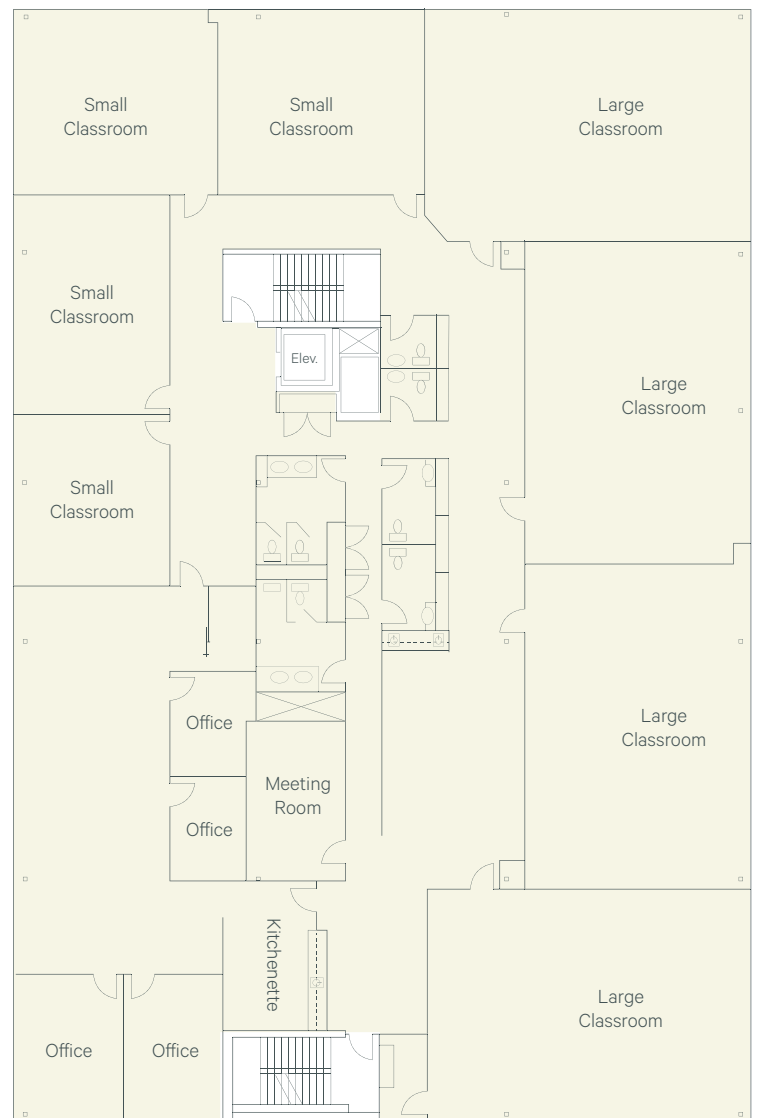
2nd Floor | 10,334 sq. ft.

Full Floor Opportunity | Available Jan 1, 2026

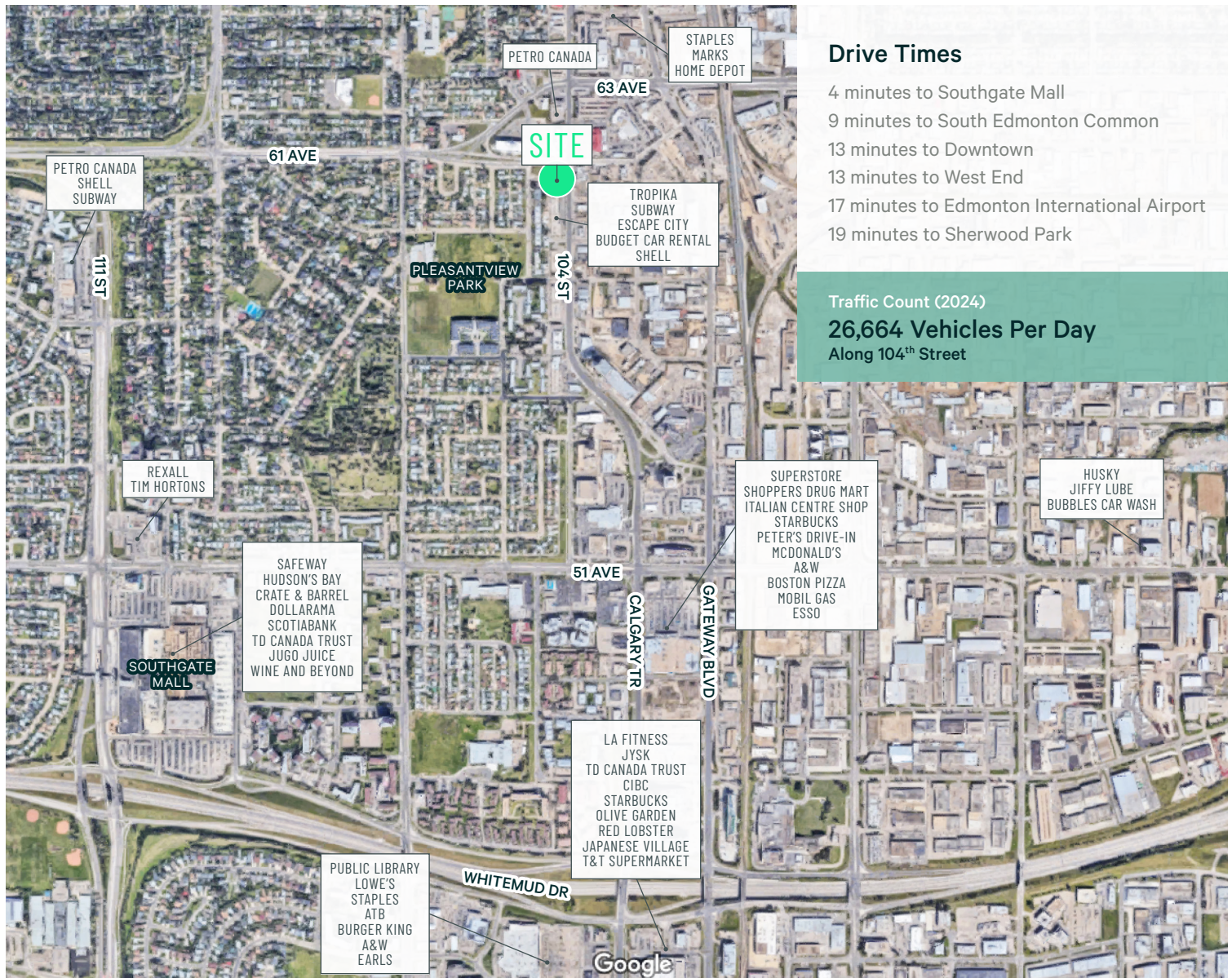


3rd Floor | 10,336 sq. ft.

Full Floor Opportunity | Available Jan 1, 2026



Abundant Surrounding Amenities



Contact Us

Ryan O'Shaughnessy

Senior Associate

+1 780 229 4686

ryan.oshaughnessy@cbre.com

Mark Anderson

Vice President

+1 780 229 4652

mark.anderson2@cbre.com

This disclaimer shall apply to CBRE Limited, Real Estate Brokerage, and to all other divisions of the Corporation; to include all employees and independent contractors ("CBRE"). All references to CBRE Limited herein shall be deemed to include CBRE, Inc. The information set out herein, including, without limitation, any projections, images, opinions, assumptions and estimates obtained from third parties (the "Information") has not been verified by CBRE, and CBRE does not represent, warrant or guarantee the accuracy, correctness and completeness of the Information. CBRE does not accept or assume any responsibility or liability, direct or consequential, for the Information or the recipient's reliance upon the Information. The recipient of the Information should take such steps as the recipient may deem necessary to verify the Information prior to placing any reliance upon the Information. The Information may change and any property described in the Information may be withdrawn from the market at any time without notice or obligation to the recipient from CBRE. CBRE and the CBRE logo are the service marks of CBRE Limited and/or its affiliated or related companies in other countries. All other marks displayed on this document are the property of their respective owners. All Rights Reserved.