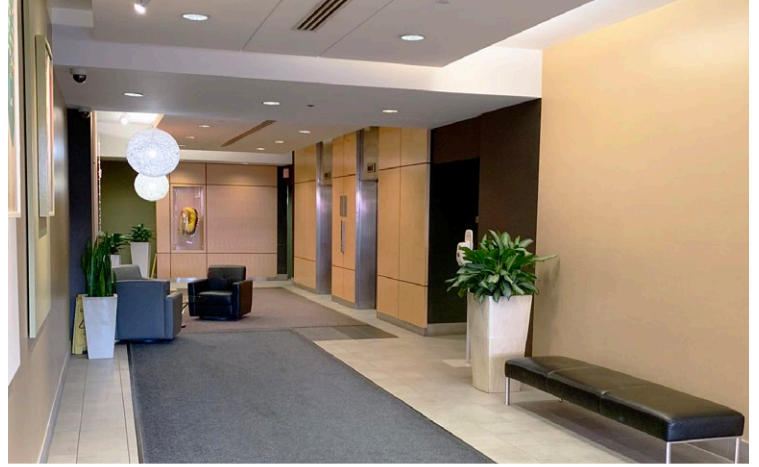


# Peace Hills Insurance Building

10709 Jasper Avenue  
Edmonton, Alberta

Flexible Size Options Available





# Peace Hills Insurance Building

## Leasing Details



**Asking Rate**      \$14.00 PSF



**Parking Ratio**      1 stall / 1,000 SF



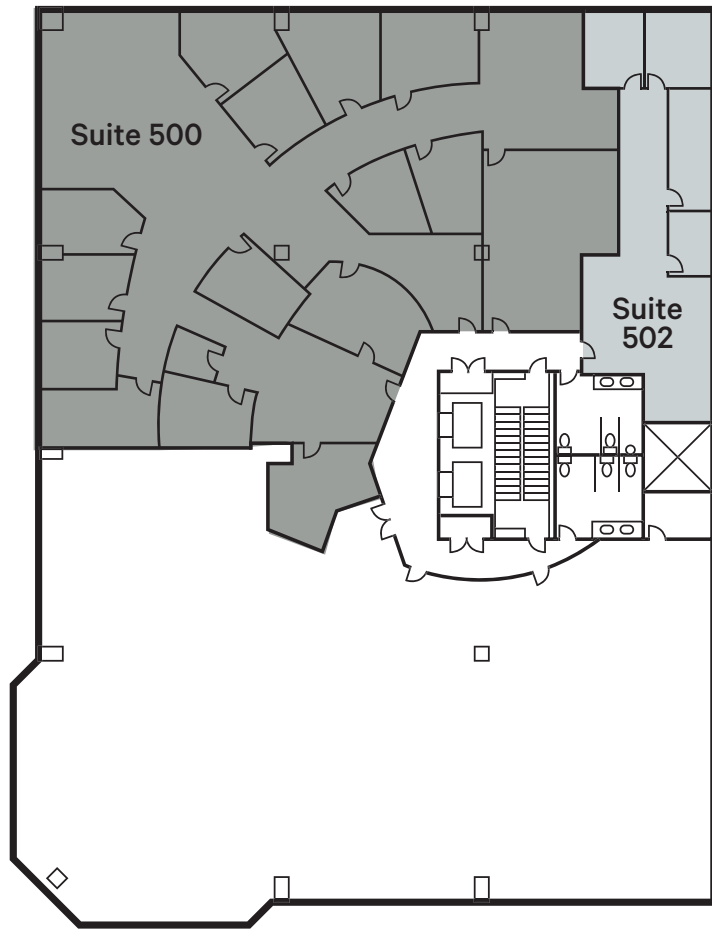
**Operating Costs (2024)**      \$14.36 PSF



**Parking Rate**      \$250.00  
Underground

### 5<sup>th</sup> Floor Plan

Suite 500 : 6,604 Sq. Ft.  
Suite 502 : 1,270 Sq. Ft.



### 6<sup>th</sup> Floor Plan

Suite 600 : 13,655 Sq. Ft.





## Find Out More

### Jeff Simkin

Senior Vice President  
+1 780 917 4633  
jeff.simkin@cbre.com

© This disclaimer shall apply to CBRE Limited, and to all divisions of the Corporation (“CBRE”). The information set out herein (the “Information”) has not been verified by CBRE, and CBRE does not represent, warrant or guarantee the accuracy, correctness and completeness of the Information. CBRE does not accept or assume any responsibility or liability, direct or consequential, for the Information or the recipient’s reliance upon the Information. The recipient of the Information should take such steps as the recipient may deem necessary to verify the Information prior to placing any reliance upon the Information. The Information may change and any property described in the Information may be withdrawn from the market at any time without notice or obligation to the recipient from CBRE.