

The Colliers logo consists of the word "Colliers" in a white serif font, centered within a dark blue rounded rectangle. Below the text are three horizontal stripes in yellow, red, and blue from top to bottom.

Colliers

A white rectangular sign with the word "Signage" in a blue sans-serif font is mounted on the brick building's facade.

Signage

A tall, grey, rectangular signpost with a white sign at the top. The sign contains the address "6415 NORTHWEST DRIVE" in black text.

6415
NORTHWEST DRIVE

For Lease | 6415 Northwest Drive, Mississauga

Flex Office and Light Industrial Units Available, Move-In Ready

Centrally located near Toronto Pearson International Airport, beautiful move-in ready office/flex/light industrial premises improved to a high standard with high ceilings. Professionally managed.

Patrick Cowie*

Senior Vice President
+1 416 791 7223
patrick.cowie@colliers.com

Availability

	Area	Lease Rate	T.M.I.	Type	Doors	Clear Height
Unit 1-5	7,289 SF	\$9.95 PSF Net	\$6.00 PSF	Light Industrial	4DI	16' 3"
Unit 6-14	17,717 SF	\$13.95 PSF Net	\$6.00 PSF	Flex Office	-	-
Unit 21-30	18,682 SF	\$9.95 PSF Net	\$6.00 PSF	Light Industrial	9TL/1DI	15' 9" - 18' 7"
Unit 37-40	6,790 SF	\$13.95 PSF Net	\$6.00 PSF	Flex Office	-	-



Highlights

- Suites are highly improved with quality leasehold improvements in space
- Flexible Size Ranges
- Very attractive location close to major highways and amenities
- Professional, Service Oriented Management



Ample free surface parking on-site

Floor Plans



LEGEND

- AVAILABLE OFFICE SPACE
- AVAILABLE LIGHT INDUSTRIAL
- OCCUPIED UNITS

ENTIRE BUILDING
UNITS: 1-40

NTS NOVEMBER 26, 2020

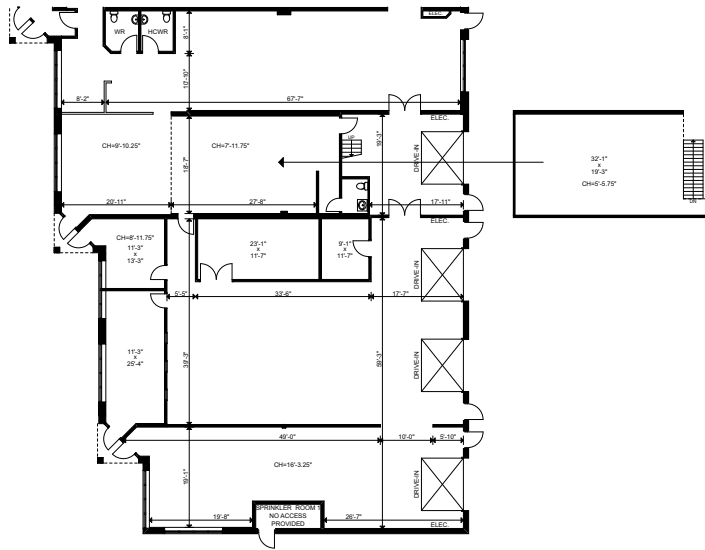
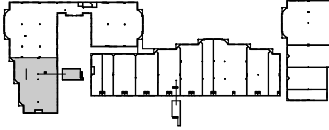
elemental
INTERIOR DESIGN SPACE PLANNING

Elemental Interior Design Inc.
109 Park Street
Mississauga, Ontario Canada M2L 1Y3
519 747 8782 fax 519 747 9817

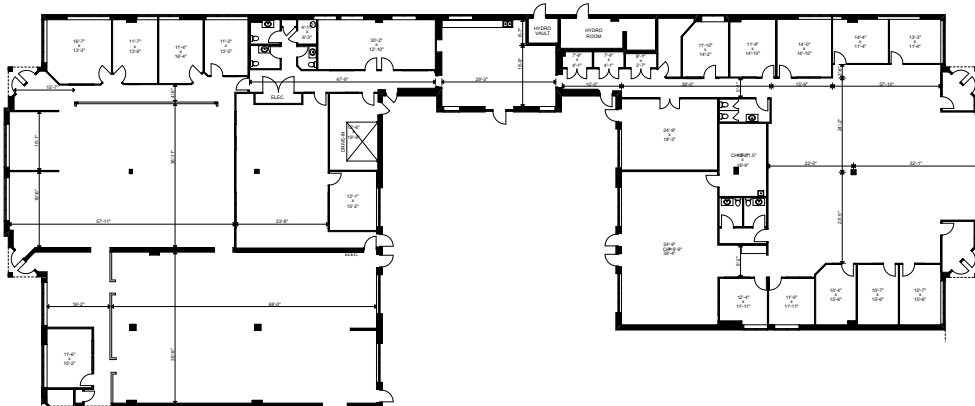
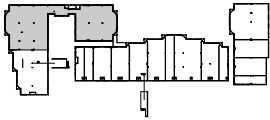


Floor Plans

Suite 1-5 | 7,289 SF

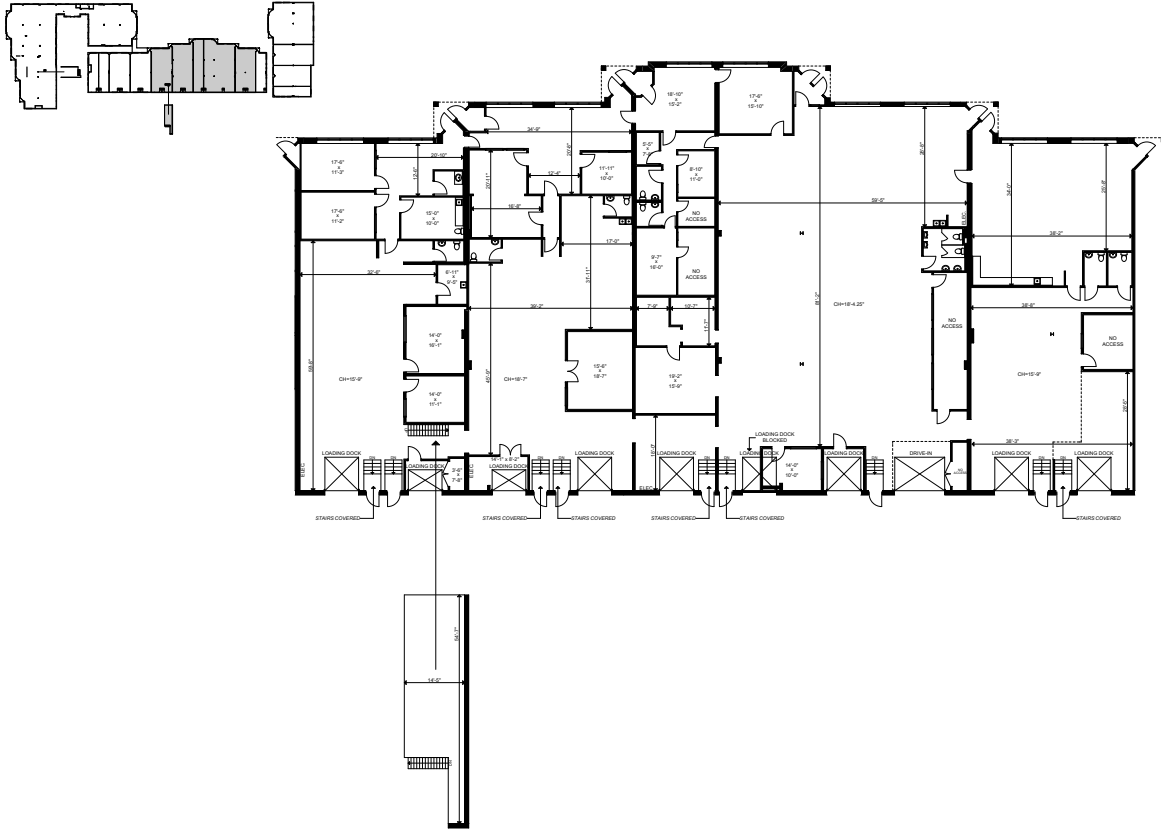


Suite 6-14 | 17,717 SF

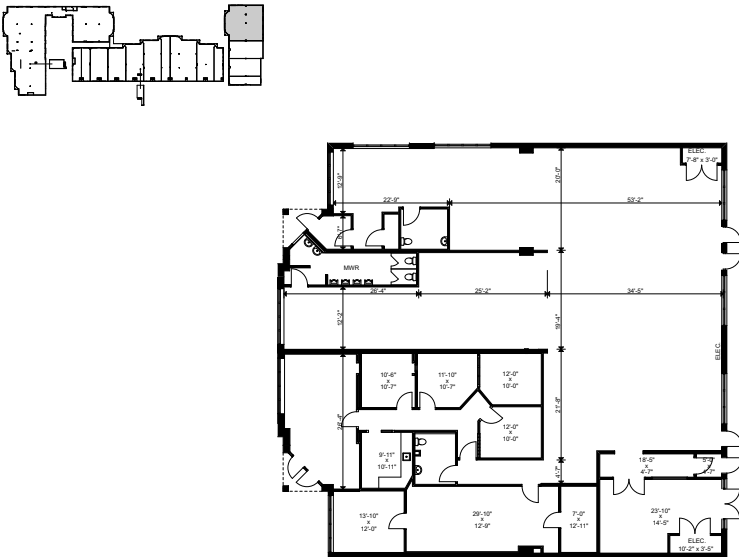


Floor Plans

Suite 21-30 | 18,682 SF



Suite 37-40 | 6,790 SF



Colliers

6415 Northwest Drive



Entrance Road

HIGHFIELD

Belfield Road



Highway 27

Martin Grove Road

American Drive

Carlingview Drive

Dixon Road

Airport Road



MARTIN GARD

Toronto Pearson
International
Airport



WILLOWRIDGE

Eglington Ave W

6415 Northwest Drive, Mississauga

Patrick Cowie*

Senior Vice President

+1 416 791 7223

patrick.cowie@colliers.com

*Sales Representative. This document has been prepared by Colliers International for advertising and general information only. Colliers International makes no guarantees, representations or warranties of any kind, expressed or implied, regarding the information including, but not limited to, warranties of content, accuracy and reliability. Any interested party should undertake their own inquiries as to the accuracy of the information. Colliers International excludes unequivocally all inferred or implied terms, conditions and warranties arising out of this document and excludes all liability for loss and damages arising there from. This publication is the copyrighted property of Colliers international and/or its licensor(s). Copyright © 2021 Colliers Macaulay Nicolls Inc.

[View Online Listing](#)

Accelerating success.