

ALLIED

CUSHMAN &  
WAKEFIELD

175 Bloor St. East



# Welcome to 175 Bloor St. East

Situated on Bloor Street East at Church Street, 175 Bloor is in the heart of an amenity-rich urban neighbourhood. Its proximity to transit, shops, restaurants and everyday conveniences, makes it a well-connected workspace solution catering to all types of knowledge-based organizations. With two high-rise office towers linked by an expansive lobby, 175 Bloor offers a distinctive environment for connectivity and creativity.



# Building Overview

## AMENITIES

- Ground floor shower facilities with lockers
- Enclosed bike storage
- 24/7 onsite security
- Courtyard for outdoor gathering
- 8th floor conference room, with kitchenette

## PARKING

- Underground parking available
- Three electronic vehicle charging stations
- Complimentary vehicle detailing station

## TELECOM PROVIDERS

- Beanfield
- Bell
- Telus
- Rogers
- Zayo
- Cogeco

## BUILDING DESIGNATIONS

- BOMA Best Silver

## SOUTH TOWER AVAILABILITY

Suite	SF	Availability	
304	7,885	September 2024	
700	6,261	Immediate	Model Suites
701	5,181		
702	2,625		
703	2,597		
<del>1200</del>	<del>6,661</del>		LEASED
<del>1201</del>	<del>3,996</del>		LEASED
1202	6,414	Immediate	
<del>1300</del>	<del>17,071</del>	<del>Immediate</del>	LEASED
1400*	17,417	Immediate	69,659 SF Contiguous
1500*	17,415	Immediate	
1600*	17,409	Immediate	
1700*	17,418	Immediate	

## NORTH TOWER AVAILABILITY

Suite	SF	Availability	
603	3,834	Immediate	
900	9,918	Immediate	
1100*	21,047	Immediate	42,076 SF Contiguous
1200*	21,029	Immediate	

## NET RENT

Call Listing Agent

## ADDITIONAL RENT

\$26.65 PSF (2024 Estimate)  
Includes utilities & in-suite janitorial

\*Interconnecting stairwell between floors



# Connectivity

175 Bloor is easily accessible by car, bicycle or transit. The closest subway station, Bloor-Yonge, is a two-minute walk connecting users to Bloor-Danforth and Yonge-University subway lines. The Don Valley Parkway, Bayview Extension and Gardiner Expressway, are within a short distance, easing the commute for drivers throughout the Greater Toronto Area.

## TRAVEL TIMES

### TTC

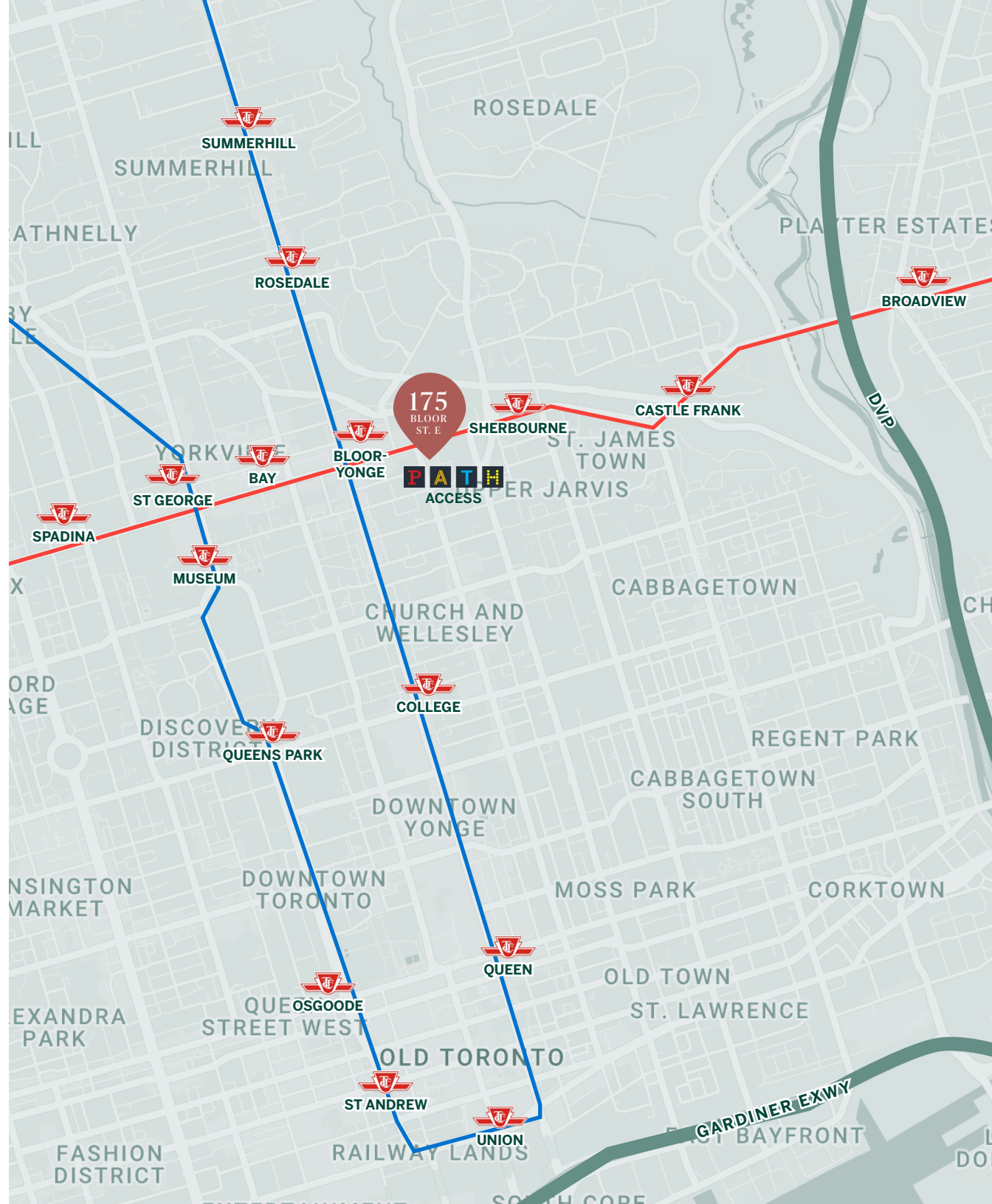
- Bloor/Yonge to Union Station | **12 mins**
- Bloor/Yonge to Eglinton Station | **10 mins**
- Bloor/Yonge to St.Clair Station | **5 mins**

### CAR

- To DVP | **5 mins**
- To Gardiner Expressway (via DVP) | **12 mins**
- To Hwy 401 (via DVP) | **22 mins**

— Yonge–University Subway

— Bloor–Danforth Subway



# Neighbourhood Amenities

## RETAIL

1. Whole Foods
2. Hermes
3. Harry Rosen
4. DECIEM
5. COS
6. Sephora
7. Eataly Toronto
8. Indigo
9. LCBO
10. Holt Renfrew
11. Aritzia
12. H&M
13. Nordstrom Rack
14. Shoppers Drug Mart
15. Longos

## RESTAURANT & CAFE

1. Morton's Steakhouse
2. STK Steakhouse
3. Sassafraz
4. Starbucks
5. Cali Love
6. Planta
7. Starbucks
8. Subway
9. Firkin on Bay
10. 7 West Cafe
11. Balzac's
12. Cafe Landwer
13. Chick-Fil-A
14. A&W
15. Sunset Grill

## HEALTH & FITNESS

1. Equinox
2. Catalyst Health
3. Goodlife Fitness
4. Orange Theory Fitness

## TRANSIT

— Yonge–University Subway

— Bloor–Danforth Subway



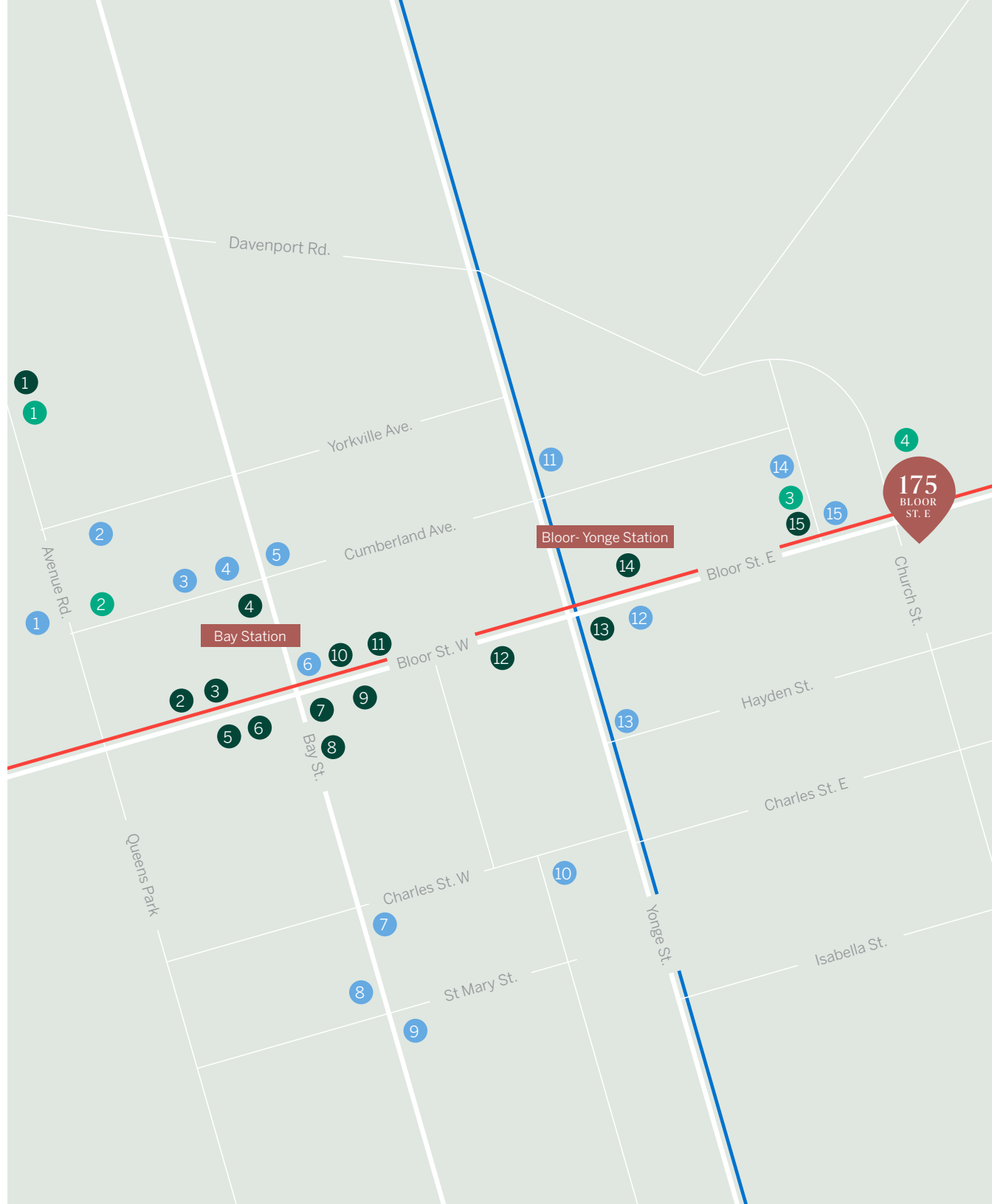
**Walk Score** | 98



**Transit Score** | 90

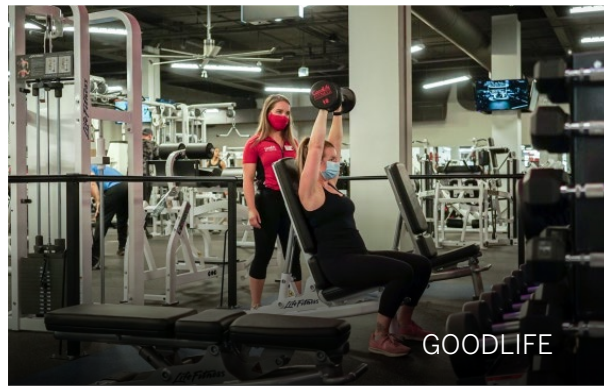


**Bike Score** | 95





# Neighbourhood Features



GOODLIFE



LONGOS



EATALY



BALZACS



THE ROM



HOLT RENFREW



F45



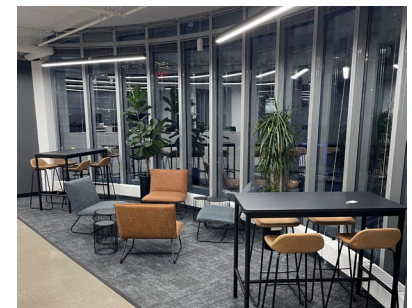
LULULEMON



ALOBAR



# 175 Bloor St. East - South Tower



3rd Floor - 7,885 SF sf

# 175 Bloor St. East - 7th Floor - Model Suites South Tower

BLOOR STREET

## Suite 700 - 6,261 SF

Space Type	Qty
Workstation	24
Executive Office #1	2
Executive Office #2	1
Office	2
Boardroom	1
Small Meeting Room	2
Medium Mtg. Room	1
Kitchen/Lounge	1
Copy Area	1
Total Open Collab	1
Reception Area	1
Waiting Area	1

## Suite 702 - 2,625 SF

Space Type	Qty
Workstation	12
Office	2
Meeting Room	1
Kitchen	1
Lounge	1
Copy Area	1
Total Open Collab	1
Reception Area	1
Waiting Area	1

## Suite 703 - 2,597 SF

Space Type	Qty
Workstation	10
Office	2
Boardroom	1
Small Meeting Room	1
Kitchen	1
Copy Area	1
Total Open Collab	1
Reception Area	1
Waiting Area	1

## Suite 701 - 5,181 SF

Space Type	Qty
Workstation	24
Executive Office #1	1
Executive Office #2	1
Office	2
Boardroom	1
Medium Meeting Rm	1
Kitchen/Lounge	1

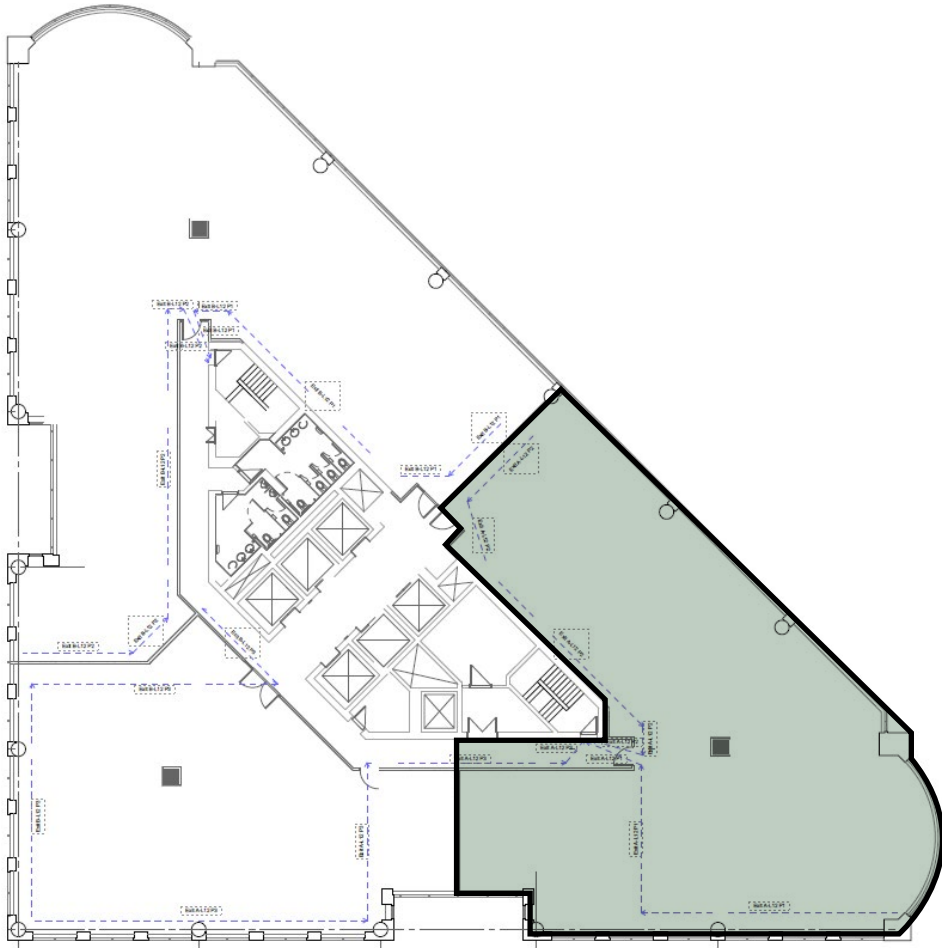
CHURCH STREET



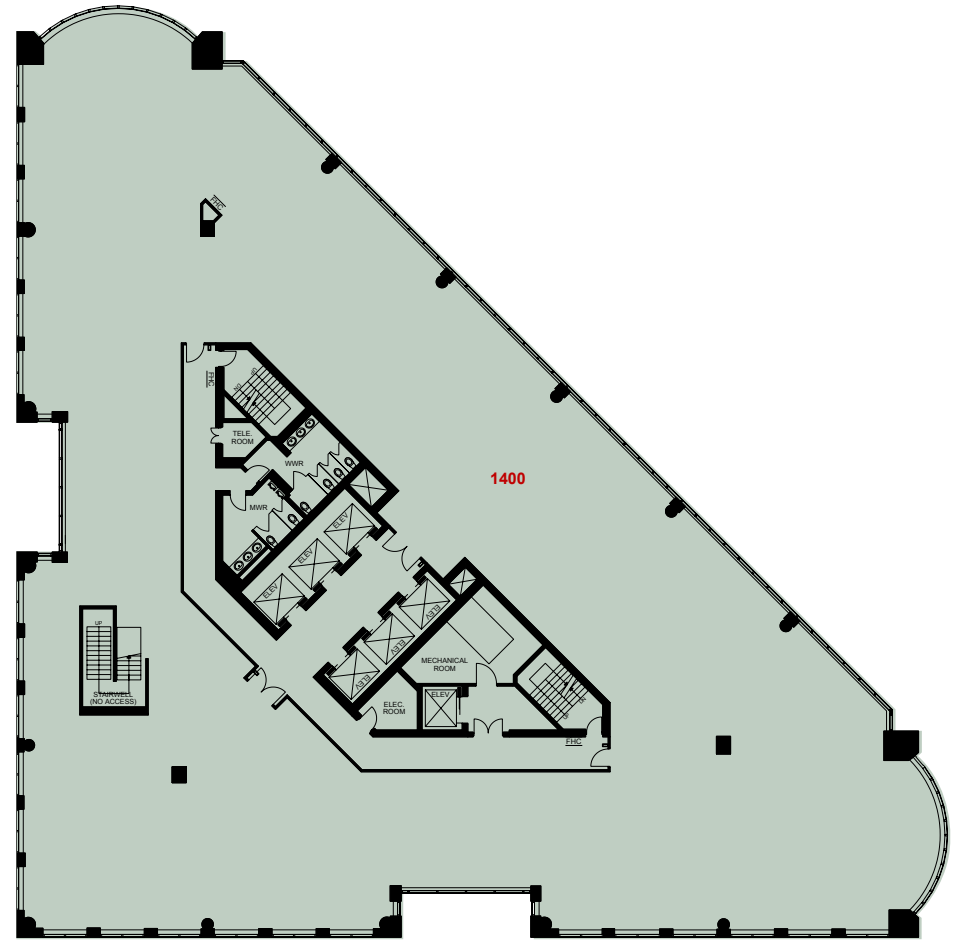
7th floor model suites ranging from 2,597 sf - 6,261 sf



# 175 Bloor St. East - South Tower

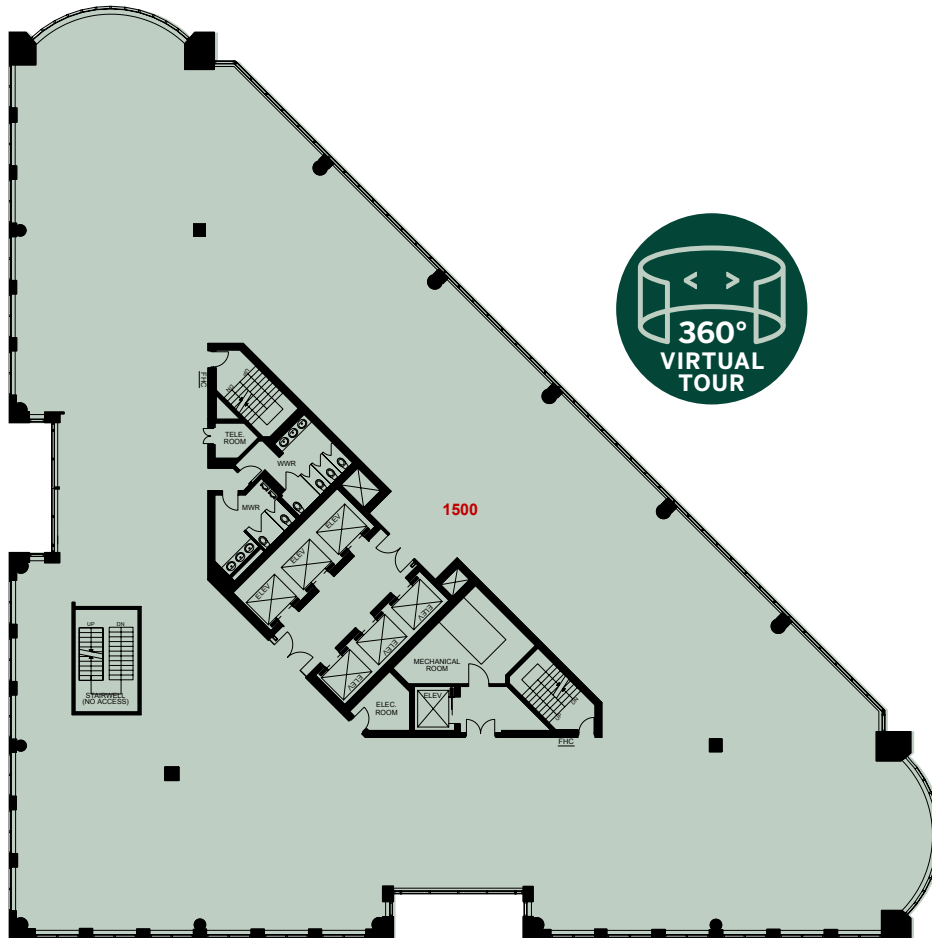


12th Floor - 6,414 sf



14th Floor - 17,417 sf

# 175 Bloor St. East - South Tower



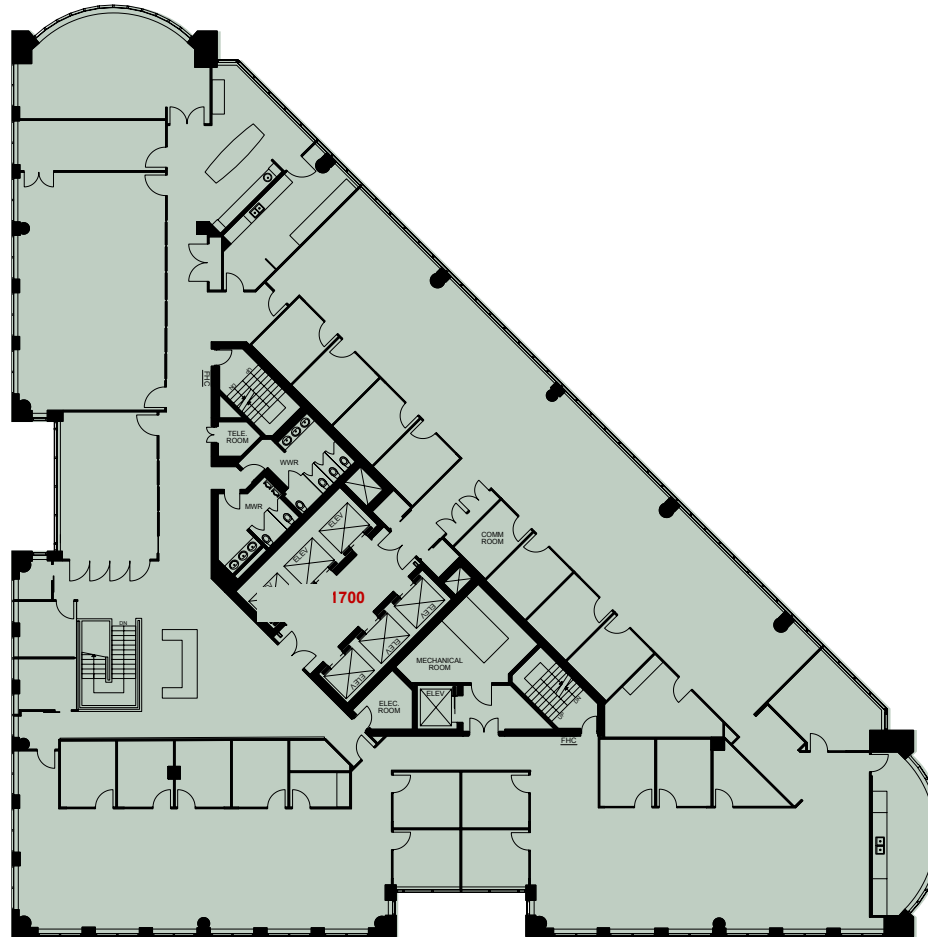
15th Floor - 17,415 sf



16th Floor - 17,409 sf

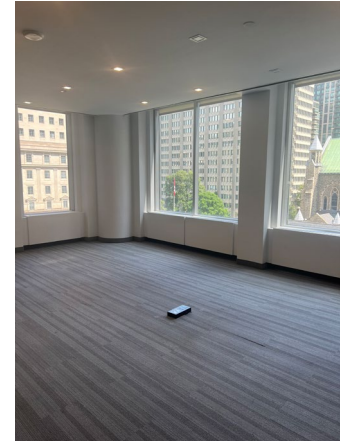
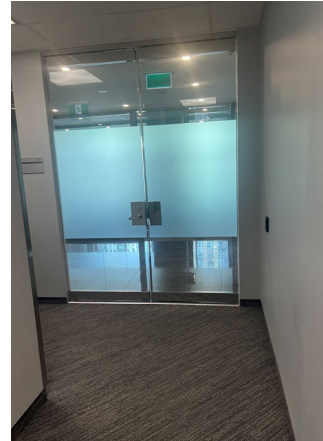
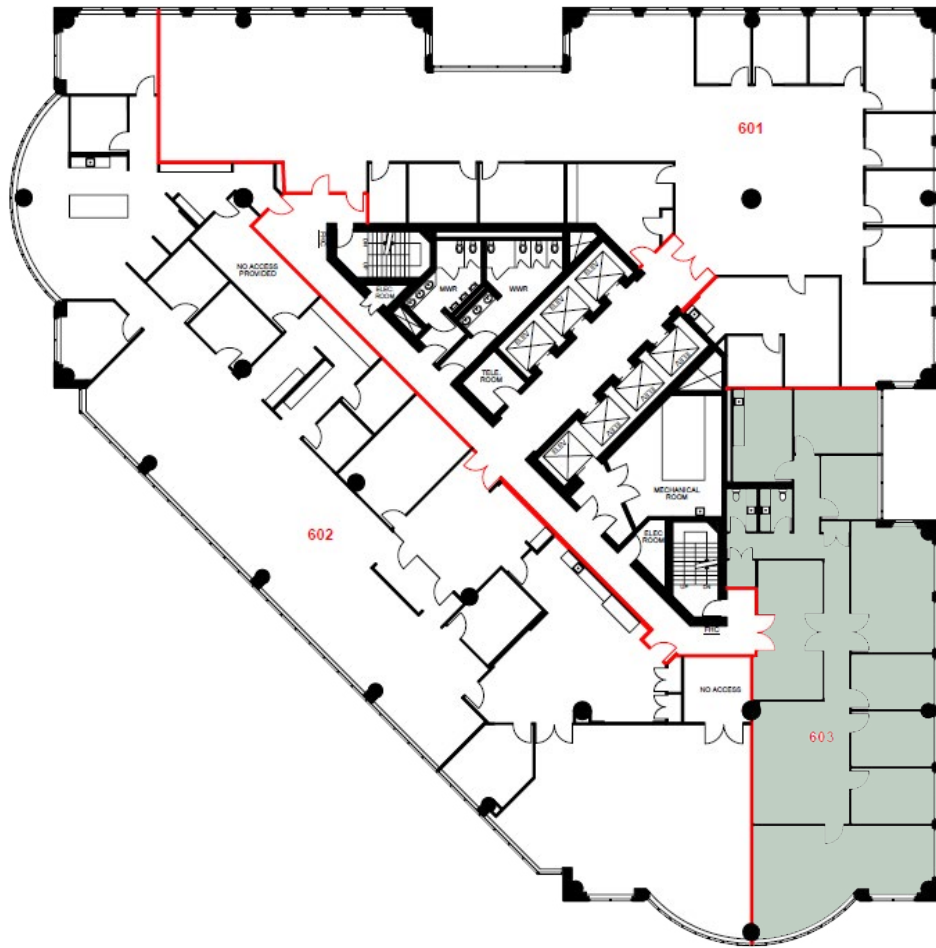


# 175 Bloor St. East - South Tower



17th Floor - 17,418 sf

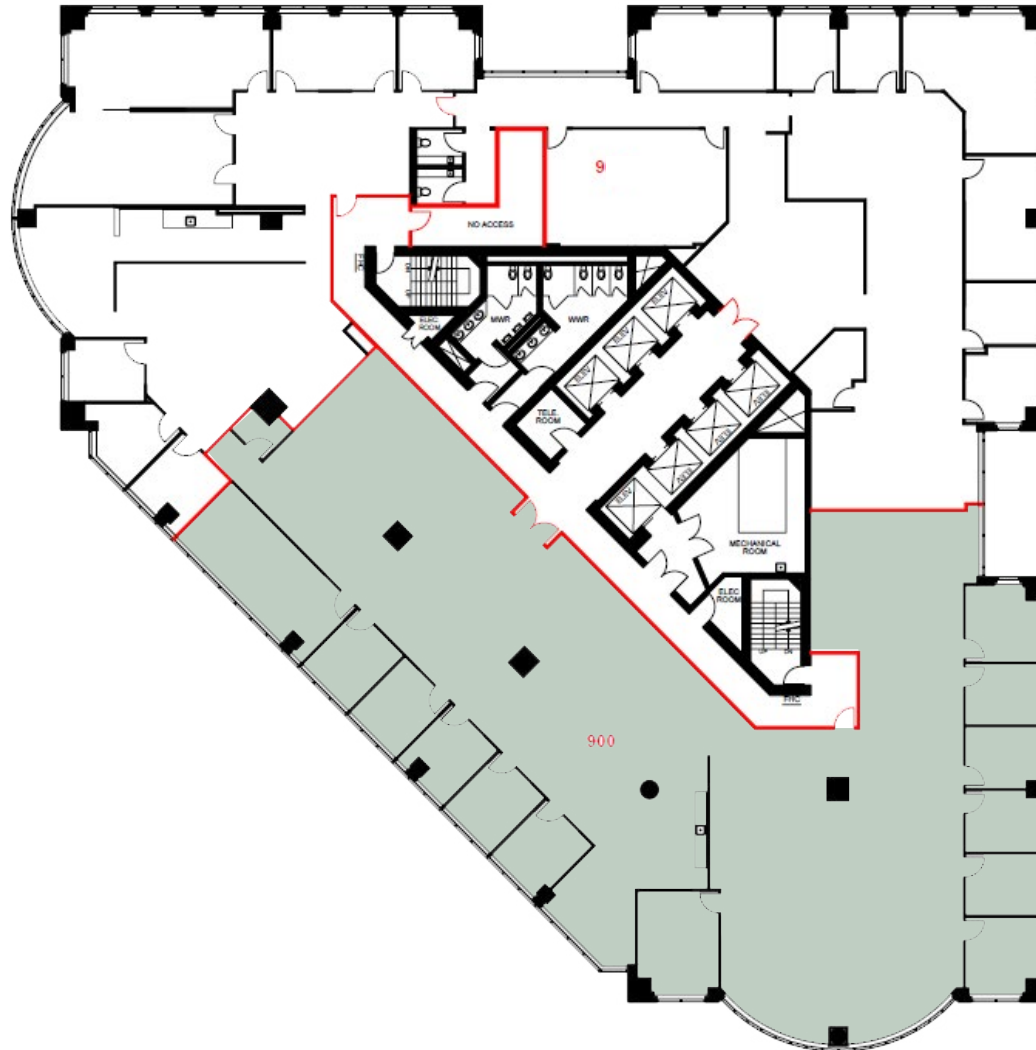
# 175 Bloor St. East - North Tower



6th Floor - 3,834 sf

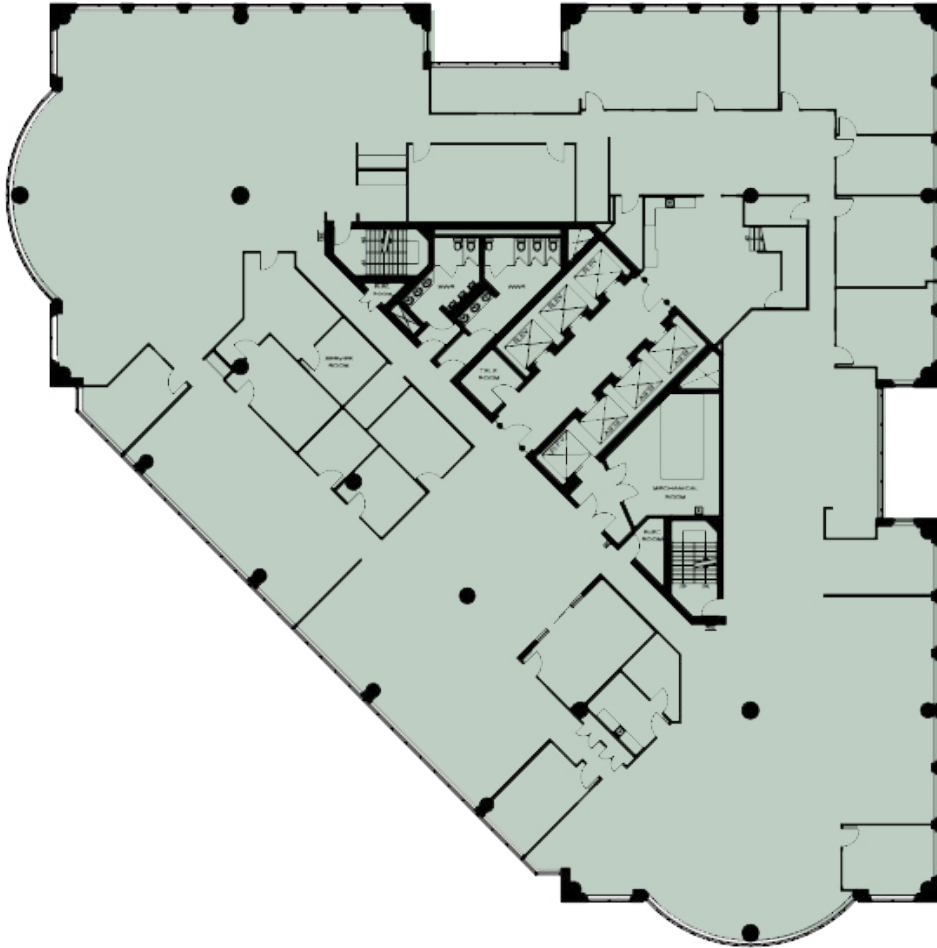


# 175 Bloor St. East - North Tower



9th Floor - 9,918 sf

# 175 Bloor St. East - North Tower



11th Floor - 21,047 sf



12th Floor - 21,029 sf





**STEVEN SOTIROFF\***

Associate

647.580.5030

[steven.sotiroff@cushwake.com](mailto:steven.sotiroff@cushwake.com)

**ERIC SHAW\***

Executive Vice President

416.359.2425

[eric.shaw@cushwake.com](mailto:eric.shaw@cushwake.com)

**CAMERON MITCHELL\***

Vice President

416.359.2445

[cam.mitchell@cushwake.com](mailto:cam.mitchell@cushwake.com)

**CUSHMAN & WAKEFIELD ULC**

161 Bay Street, Suite 1500

Toronto, ON M5J 2S1 | Canada

[cushmanwakefield.com](http://cushmanwakefield.com)

©2024 Cushman & Wakefield. All rights reserved. The information contained in this communication is strictly confidential. This information has been obtained from sources believed to be reliable but has not been verified. NO WARRANTY OR REPRESENTATION, EXPRESS OR IMPLIED, IS MADE AS TO THE CONDITION OF THE PROPERTY (OR PROPERTIES) REFERENCED HEREIN OR AS TO THE ACCURACY OR COMPLETENESS OF THE INFORMATION CONTAINED HEREIN, AND SAME IS SUBMITTED SUBJECT TO ERRORS, OMISSIONS, CHANGE OF PRICE, RENTAL OR OTHER CONDITIONS, WITHDRAWAL WITHOUT NOTICE, AND TO ANY SPECIAL LISTING CONDITIONS IMPOSED BY THE PROPERTY OWNER(S). ANY PROJECTIONS, OPINIONS OR ESTIMATES ARE SUBJECT TO UNCERTAINTY AND DO NOT SIGNIFY CURRENT OR FUTURE PROPERTY PERFORMANCE. \* Sales Representative